

UNITED STATES
DEPARTMENT OF THE INTERIOR
GEOLOGICAL SURVEYRECEIVED
SEP 20 1983Form approved.
Budget Bureau No. 42-R1425.

30-043-20682

5. LEASE DESIGNATION AND SERIAL NO.

NM-54363

M 54363

6. IF INDIAN, ALLOTTEE OR TRIBE NAME

7. UNIT AGREEMENT NAME

8. FARM OR LEASE NAME

Lybrook "A"

9. WELL NO.

1

10. FIELD AND POOL, OR WILDCAT

Lybrook Gallup ext

11. SEC., T., R., M., OR BLK.

AND SURVEY OR AREA

Sec. 30, T-23N, R-6W,
N.M.P.M.

12. COUNTY OR PARISH

Sandoval

13. STATE
New Mexico

1a. TYPE OF WORK

DRILL ☒DEEPEN ☐PLUG BACK ☐

DIST. 3

b. TYPE OF WELL

OIL
WELL ☒GAS
WELL ☐OTHER ☐SINGLE
ZONE ☒MULTIPLE
ZONE ☐

2. NAME OF OPERATOR

Union Texas Petroleum Corporation

3. ADDRESS OF OPERATOR

P. O. Box 808, Farmington, New Mexico 87499

4. LOCATION OF WELL (Report location clearly and in accordance with any State requirements.)

At surface

396 ft./North; 620 ft./East lines

At proposed prod. zone

Same as above

14. DISTANCE IN MILES AND DIRECTION FROM NEAREST TOWN OR POST OFFICE*

1-1/2 miles Southwest of Counselor, New Mexico

15. DISTANCE FROM PROPOSED*

396'

LOCATION TO NEAREST

PROPERTY OR LEASE LINE, FT.

(Also to nearest drlg. unit line, if any)

396'

16. NO. OF ACRES IN LEASE

321.88

17. NO. OF ACRES ASSIGNED

TO THIS WELL

40.00

18. DISTANCE FROM PROPOSED LOCATION*

TO NEAREST WELL, DRILLING, COMPLETED,
OR APPLIED FOR, ON THIS LEASE, FT.

None Drilled

19. PROPOSED DEPTH

5730'

20. ROTARY OR CABLE TOOLS

Rotary

21. ELEVATIONS (Show whether DF, RT, GR, etc.)

7055 GR

22. APPROX. DATE WORK WILL START*

September 15, 1983

23. PROPOSED CASING AND CEMENTING PROGRAM

SIZE OF HOLE	SIZE OF CASING	WEIGHT PER FOOT	SETTING DEPTH	QUANTITY OF CEMENT
12-1/4"	8-5/8"	24.0# J-55	300'	240 cu. ft. (circulated)
7-7/8"	4-1/2"	11.6# K-55	5730'	2600 cu. ft. (circulated)

We desire to drill 12-1/4" surface hole to approx. 300 ft. using natural mud as a circulating medium. Run new 8-5/8", 24.0#, J-55 casing to TD. Cement with approx. 240 cu. ft. Class "B" cement circulated to surface. Pressure test the casing to 800 PSIG. Drill 7-7/8" hole to TD of approx. 5730 ft. using a permaloid, nondispersed mud as the circulating medium. Log the well. Run new 4-1/2", 11.6#, K-55 casing to TD with DV tool at approx. 2150 ft. Cement first stage with approx. 1300 cu. ft. of 65/35/6 followed by 100 cu. ft. 50/50 Poz mix. Cement second stage with approx. 1200 cu. ft. of 65/35/12 Poz circulated to surface. Drill out the DV tool and pressure test the casing to 1500 PSIG. Perforate and fracture the Gallup zone. Clean the well up. Run new 2-3/8", EUE, 4.7#, J-55 tubing to the Gallup zone. Run rod pump and rods. Set a pumping unit and tanks. Test the well and connect to a gathering system.

The gas from this well has not been dedicated.

NOTE: Actual cement volumes will be calculated from caliper log.

IN ABOVE SPACE DESCRIBE PROPOSED PROGRAM: If proposal is to deepen or plug back, give data on present productive zone and proposed new productive zone. If proposal is to drill or deepen directionally, give pertinent data on subsurface locations and measured and true vertical depths. Give blowout preventer program, if any.

24.

SIGNED

W. K. Cooper

TITLE Field Operations Manager

(This space for Federal or State office use)

PERMIT NO.

APPROVAL DATE

APPROVED BY

TITLE

CONDITIONS OF APPROVAL, IF ANY:

DATE August 10, 1983

APPROVED

AS AMENDED

DATE SEP 16 1983

AREA MANAGER
FARMINGTON RESOURCE AREA

NMOC C

All distances must be from the outer boundaries of the Section.

Operator UNION TEXAS PETROLEUM CORPORATION			Lease LYBROOK "A"		Well No. 1
Unit Letter A	Section 30	Township 23 NORTH	Range 6 WEST	County SANDOVAL	
Actual Footage Location of Well: 396 feet from the NORTH line and 620 feet from the EAST line					
Ground Level Elev. 7055	Producing Formation GALLUP		Pool LYBROOK	Dedicated Acreage: NE NE 40.00 Acres	

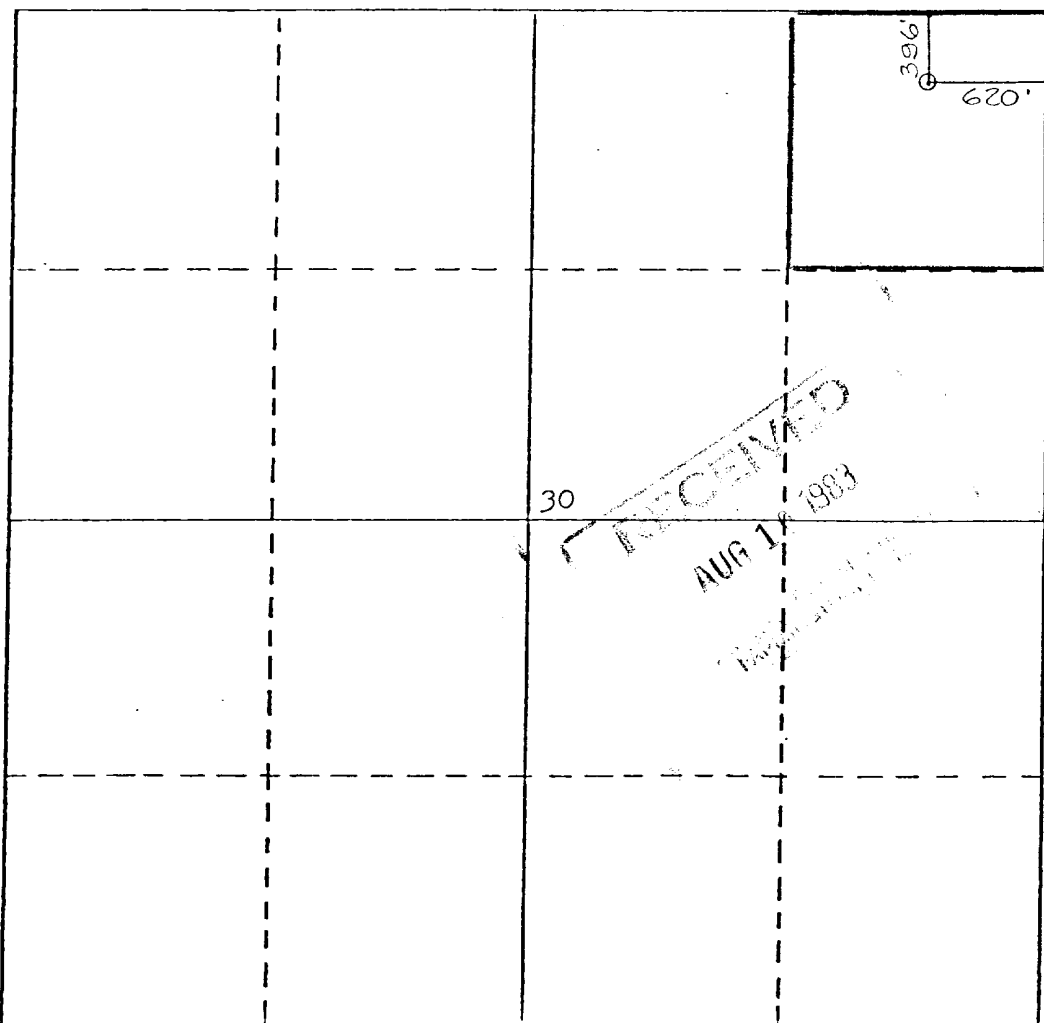
1. Outline the acreage dedicated to the subject well by colored pencil or hatchure marks on the plat below.
2. If more than one lease is dedicated to the well, outline each and identify the ownership thereof (both as to working interest and royalty).
3. If more than one lease of different ownership is dedicated to the well, have the interests of all owners been consolidated by communitization, unitization, force-pooling, etc?

RECEIVED
SEP 20 1983
OIL CON. DIV.
DIST. 3

☐ Yes ☐ No If answer is "yes," type of consolidation _____

If answer is "no," list the owners and tract descriptions which have actually been consolidated. (Use reverse side of this form if necessary.) _____

No allowable will be assigned to the well until all interests have been consolidated (by communitization, unitization, forced-pooling, or otherwise) or until a non-standard unit, eliminating such interests, has been approved by the Division



CERTIFICATION

I hereby certify that the information contained herein is true and complete to the best of my knowledge and belief.

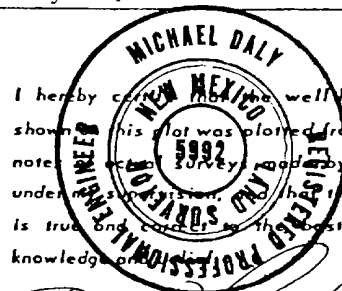
Rudy D. Motto

Name
Rudy D. Motto

Position
Area Operations Manager

Company
Union Texas Petroleum Corp.

Date
July 14, 1983



I hereby certify that the well location shown on this plat was plotted from field notes and is true and correct to the best of my knowledge and belief.

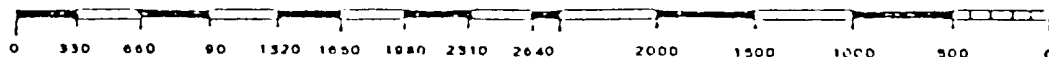
Michael Daly

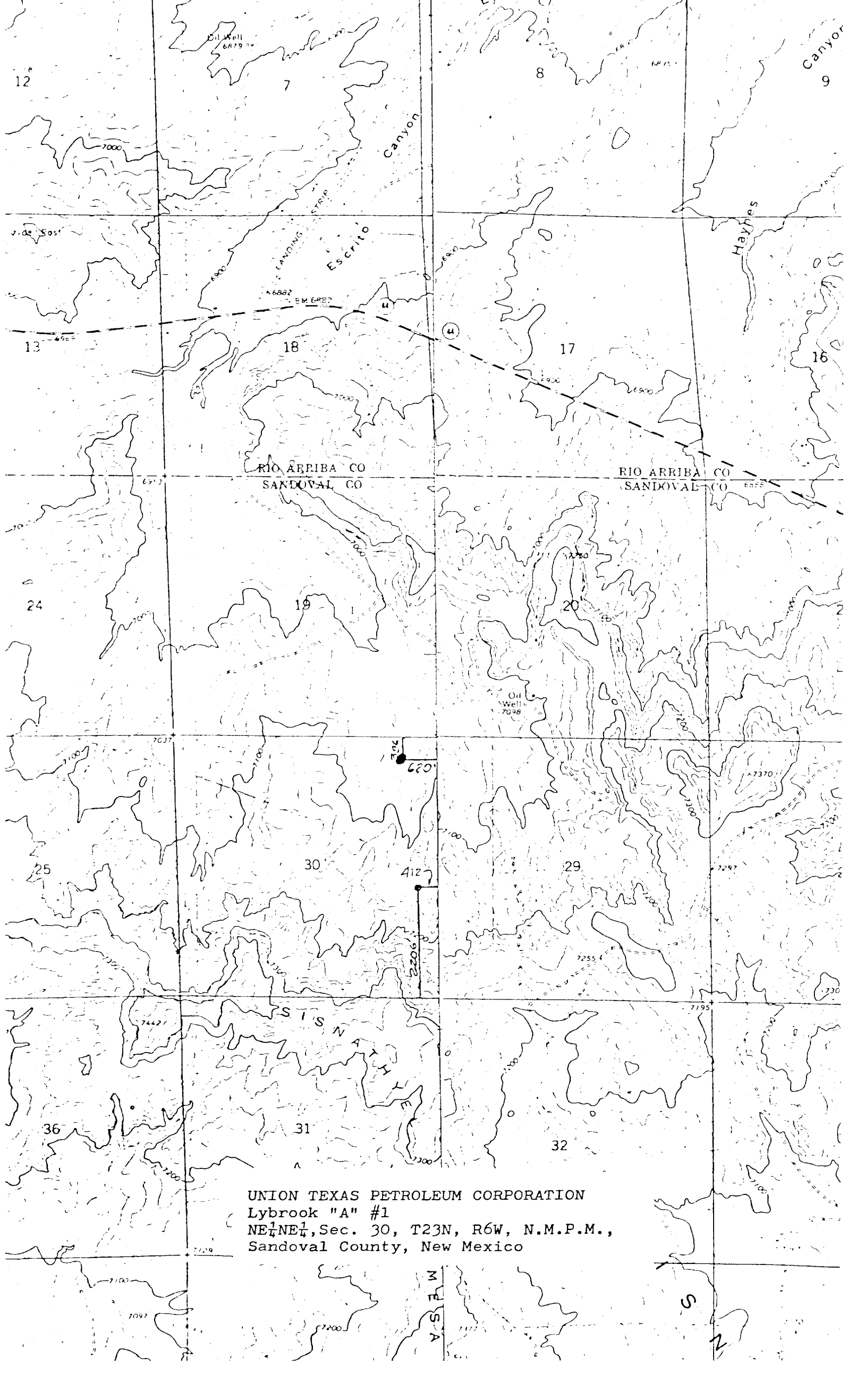
Date Surveyed
July 6, 1983

Registered Professional Engineer and/or Land Surveyor

Michael Daly

Certificate No.
5992





UNION TEXAS PETROLEUM CORPORATION
Lybrook "A" #1
NE $\frac{1}{4}$ NE $\frac{1}{4}$, Sec. 30, T23N, R6W, N.M.P.M.,
Sandoval County, New Mexico