

UNITED STATES
DEPARTMENT OF THE INTERIOR
GEOLOGICAL SURVEY

30-043-20687

APPLICATION FOR PERMIT TO DRILL, DEEPEN, OR PLUG BACK

1a. TYPE OF WORK
DRILL ☒ DEEPEN ☐ PLUG BACK ☐
b. TYPE OF WELL
CIL WELL ☒ GAS WELL ☐ OTHER ☐ SINGLE ZONE ☒ MULTIPLE ZONE ☐

2. NAME OF OPERATOR
Aztec Energy Corporation

3. ADDRESS OF OPERATOR
1206 East 20th Street, Farmington, N. M. 87401

4. LOCATION OF WELL (Report location clearly and in accordance with any State requirements.)
At surface 900' FSL and 990' FEL
At proposed prod. zone 900' FSL and 990' FEL

14. DISTANCE IN MILES AND DIRECTION FROM NEAREST TOWN OR POST OFFICE*
2.5 miles SW of Counselors, N.M.

15. DISTANCE FROM PROPOSED* LOCATION TO NEAREST PROPERTY OR LEASE LINE, FT. (Also to nearest drg. unit line, if any)
900

18. DISTANCE FROM PROPOSED LOCATION* TO NEAREST WELL, DRILLING, COMPLETED, OR APPLIED FOR, ON THIS LEASE, FT.
2400

21. ELEVATIONS (Show whether DF, RT, GR, etc.)
7303' GL

23. PROPOSED CASING AND CEMENTING PROGRAM

SIZE OF HOLE	SIZE OF CASING	WEIGHT PER FOOT	SETTING DEPTH
12-1/4"	8-5/8"	24.0#	250 feet
7-7/8"	5-1/2"	14.0# & 15.5#	5900 feet

1. Drill 12-1/4" hole with rotary tools to approx. 250 feet and run new 8-5/8" 24.0#/ft casing. Cement casing with approximately 200 sk Class B cement, circulating to surface.
2. Install BOP, and test BOP and casing to 1000 psig.
3. Drill 7-7/8" hole to approx. 5900 feet with fresh water - gel - mud.
4. Log well.
5. Run and set 5-1/2" casing and cement in two stages, cement to cover Ojo Alamo.
6. Perforate and stimulate Gallup Formation. Clean up well and complete as required.

RECEIVED
SEP 28 1983
OIL CON. DIV.
DIST. 3

IN ABOVE SPACE DESCRIBE PROPOSED PROGRAM: If proposal is to deepen or plug back, give data on present productive zone and proposed new productive zone. If proposal is to drill or deepen directionally, give pertinent data of subsurface locations and measured and true vertical depths. Give blowout preventer program, if any.

24. SIGNED Ronnie W. Allen
Ronnie W. Allen
(This space for Federal or State office use)

TITLE Geologist

PERMIT NO. APPROVAL DATE

APPROVED BY TITLE

CONDITIONS OF APPROVAL, IF ANY:

5. LEASE DESIGNATION AND SERIAL NO.
NM 28741
6. IF INDIAN, ALLOTTEE OR TRIBE NAME
7. UNIT AGREEMENT NAME
8. FARM OR LEASE NAME
Lu Lu
9. WELL NO.
4
10. FIELD AND POOL, OR WILDCAT
Lybrook Gallup
11. SEC., T., R., M., OR BLK. AND SURVEY OR AREA
Sec. 29, T.23N, R.6W
12. COUNTY OR PARISH
Sandoval
13. STATE
N.M.

16. NO. OF ACRES IN LEASE
480
17. NO. OF ACRES ASSIGNED TO THIS WELL
40
19. PROPOSED DEPTH
5900
20. ROTARY OR CABLE TOOLS
Rotary
22. APPROX. DATE WORK WILL START*
October, 1983
This action is subject to administrative appeal pursuant to 20 CFR 290.
QUANTITY OF CEMENT
200 sk Class B w/2% KCL
950 sk Class B

9-14-83
APPROVED
AS AMENDED
DATE
SEP 27 1983
R. Bringham
Asst. AREA MANAGER
FARMINGTON RESOURCE AREA

NMOCC

All distances must be from the outer boundaries of the Section.

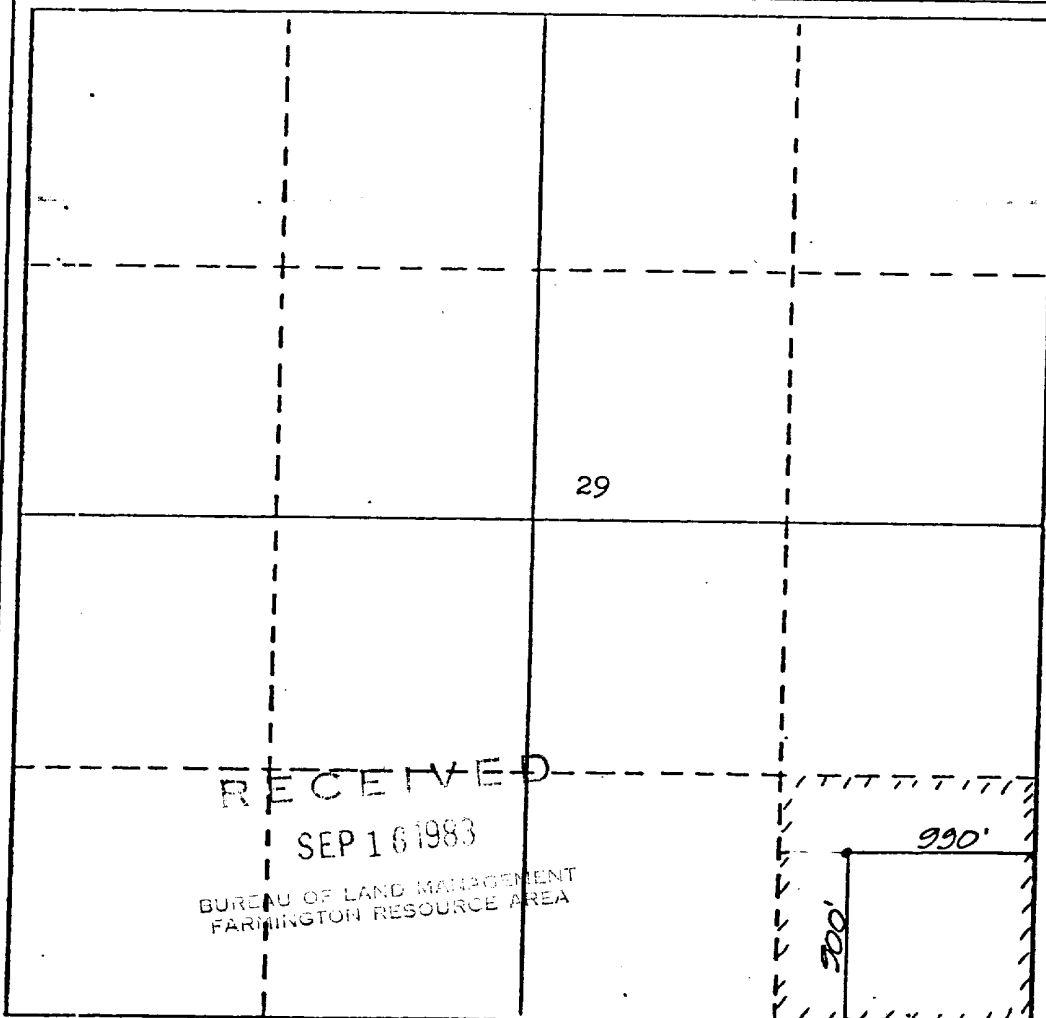
Operator AZTEC ENERGY CORPORATION			Lease LULU		Well No. #4
Unit Letter P	Section 29	Township 23 NORTH	Range 6 WEST	County SANDOVAL	
Actual Footage Location of Well: 900 feet from the SOUTH line and 990 feet from the EAST line					
Ground Level Elev. 7303	Producing Formation Gallup		Pool Lybrook Gallup		Dedicated Acreage: 40 Acres

1. Outline the acreage dedicated to the subject well by colored pencil or hachure marks on the plat below.
2. If more than one lease is dedicated to the well, outline each and identify the ownership thereof (both as to working interest and royalty).
3. If more than one lease of different ownership is dedicated to the well, have the interests of all owners been consolidated by communitization, unitization, force-pooling, etc?

☐ Yes ☐ No If answer is "yes," type of consolidation _____

If answer is "no," list the owners and tract descriptions which have actually been consolidated (Use reverse side of this form if necessary.) _____

No allowable will be assigned to the well until all interests have been consolidated (by communitization, unitization, forced-pooling, or otherwise) or until a non-standard unit, eliminating such interests, has been approved by the Division



CERTIFICATION

I hereby certify that the information contained herein is true and complete to the best of my knowledge and belief.

Ronnie W. Allen

Name

Ronnie W. Allen

Position

Geologist

Company

Aztec Energy Corporation

Date

9-14-83

I hereby certify that the well location shown on this plat plotted from field notes of a geologist made by me or under my supervision and that the same is true and correct to the best of my knowledge and belief.

Michael Daly

Date Surveyed

September 12, 1983

Registered Professional Engineer
and/or Land Surveyor

Michael Daly

Certificate No.

5992

12'30"

4010

4009

4008

4007

T. 23 N.

T. 22 N.

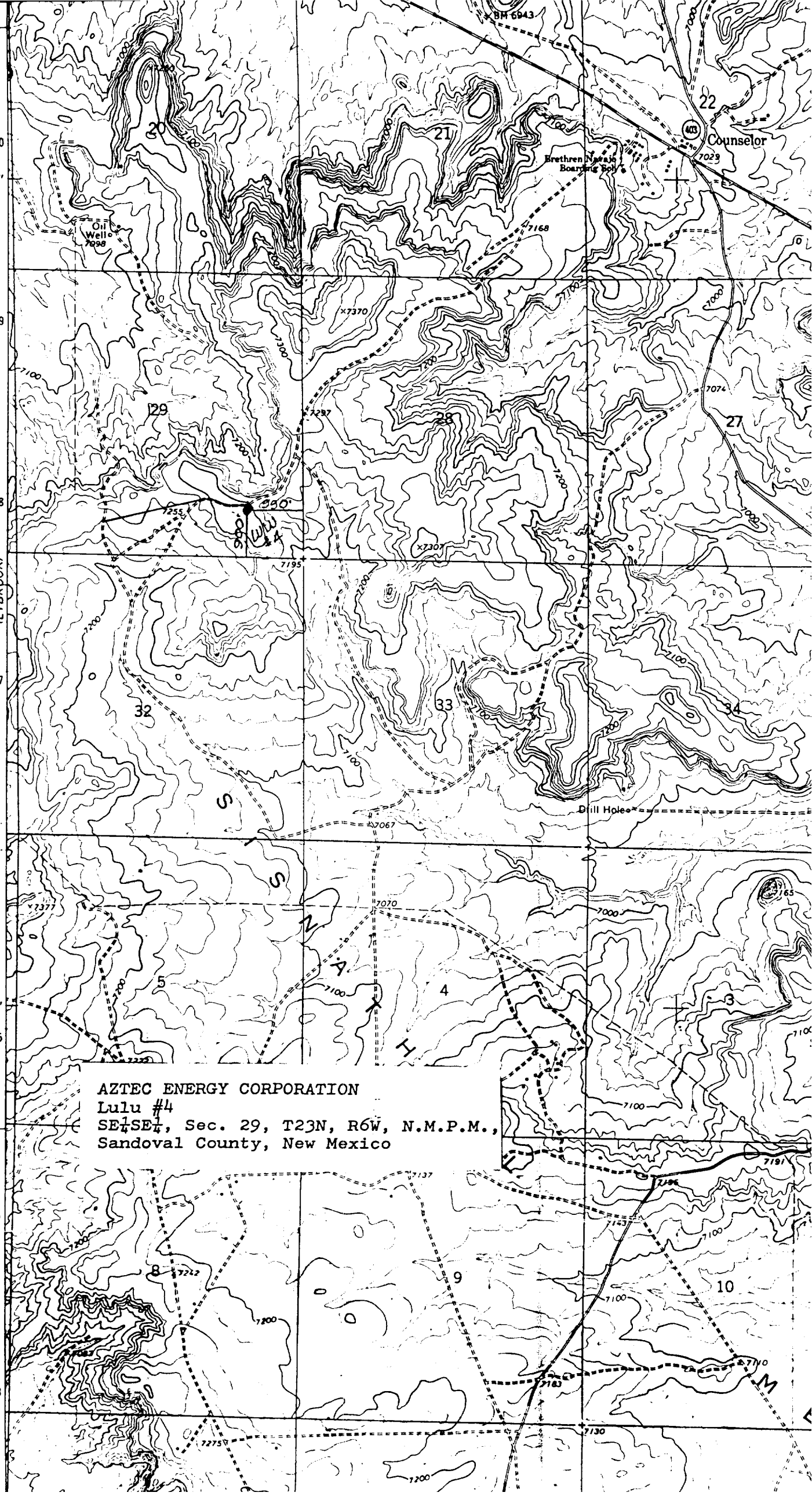
10'

4005

4004

4003

4456 11 NE
(LYBROOK)



AZTEC ENERGY CORPORATION

Lulu #4

SE 1/4 Sec. 29, T23N, R6W, N.M.P.M.,
Sandoval County, New Mexico