

UNITED STATES
DEPARTMENT OF THE INTERIOR
GEOLOGICAL SURVEY

APPLICATION FOR PERMIT TO DRILL, DEEPEN, OR PLUG BACK

1a. TYPE OF WORK

DRILL ☒DEEPEN ☐PLUG BACK ☐

b. TYPE OF WELL

OIL
WELL ☒GAS
WELL ☐OTHER ☐SINGLE
ZONE ☒MULTIPLE
ZONE ☐

2. NAME OF OPERATOR

Merrion Oil & Gas Corporation

3. ADDRESS OF OPERATOR

P. O. Box 1017, Farmington, New Mexico 87499

4. LOCATION OF WELL (Report location clearly and in accordance with any State requirements.)*

At surface

1650' FSL and 990' FWL

At proposed prod. zone Same

14. DISTANCE IN MILES AND DIRECTION FROM NEAREST TOWN OR POST OFFICE

8 miles East of Counselors, New Mexico

15. DISTANCE FROM PROPOSED*

LOCATION TO NEAREST

PROPERTY OR LEASE LINE, FT.

(Also to nearest drlg. unit line, if any)

3700

18. DISTANCE FROM PROPOSED LOCATION*

TO NEAREST WELL, DRILLING, COMPLETED,

OR APPLIED FOR, ON THIS LEASE, FT.

2700

21. ELEVATIONS (Show whether DF, RT, GR, etc.)

6883' GL

23.

PROPOSED CASING AND CEMENTING PROGRAM

SIZE OF HOLE	SIZE OF CASING	WEIGHT PER FOOT	SETTING DEPTH	QUANTITY OF CEMENT
12-1/4"	8-5/8"	20#/ft.	200	175 sx (360 cu. ft.)
7-7/8"	4-1/2"	10.5#/ft.	5863	875 sx (1571 cu. ft.)

Propose to drill 12-1/4" hole to 200 ft., set 200 ft. of 8-5/8" 20#/ft. new surface casing w/175 sx Class B, 2% CACL₂. Will drill 7-7/8" hole to TD and run open hole logs. If logs appear productive, will run 4-1/2", K-55, 10/5#/ft. new casing to TD and 2 stage cement. 1st stage 175 sx Class H, 2% gel to cover Gallup. Stage tool below Point Lookout @ 4623' est. 2nd stage 600 sx Class B w/2% D-79 followed by 100 sx Class H 2% gel. Will bring cement above ojo Alamo. Drilling mud will be low water loss gel, fresh water, starch. Will perforate and frac as necessary. Blowout prevention equipment will be 10" 900 series double ram.

Estimated Tops

San Jose	Surface	Point Lookout	4353
Ojo Alamo	1708	Mancos	4593
Pictured Cliffs	2183	Gallup	5413
Mesa Verde	3698		

IN ABOVE SPACE DESCRIBE PROPOSED PROGRAM: If proposal is to deepen or plug back, give data on present productive zone and proposed new productive zone. If proposal is to drill or deepen directionally, give pertinent data on subsurface locations and measured and true vertical depths. Give blowout preventer program, if any.

24.

SIGNED

TITLE Operations Manager

(This space for Federal or State office use)

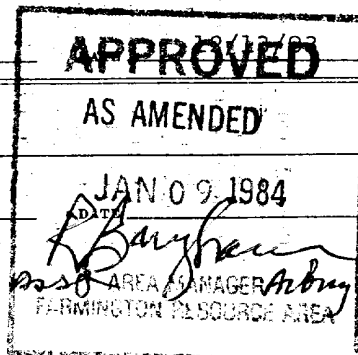
PERMIT NO.

APPROVAL DATE

APPROVED BY

TITLE

CONDITIONS OF APPROVAL, IF ANY:



OIL CONSERVATION DIVISION

STATE OF NEW MEXICO

P. O. BOX 2048

Form C-107
Revised 10-1-78

OIL AND MINERALS DEPARTMENT

SANTA FE, NEW MEXICO 87501

All distances must be from the outer boundaries of the Section.

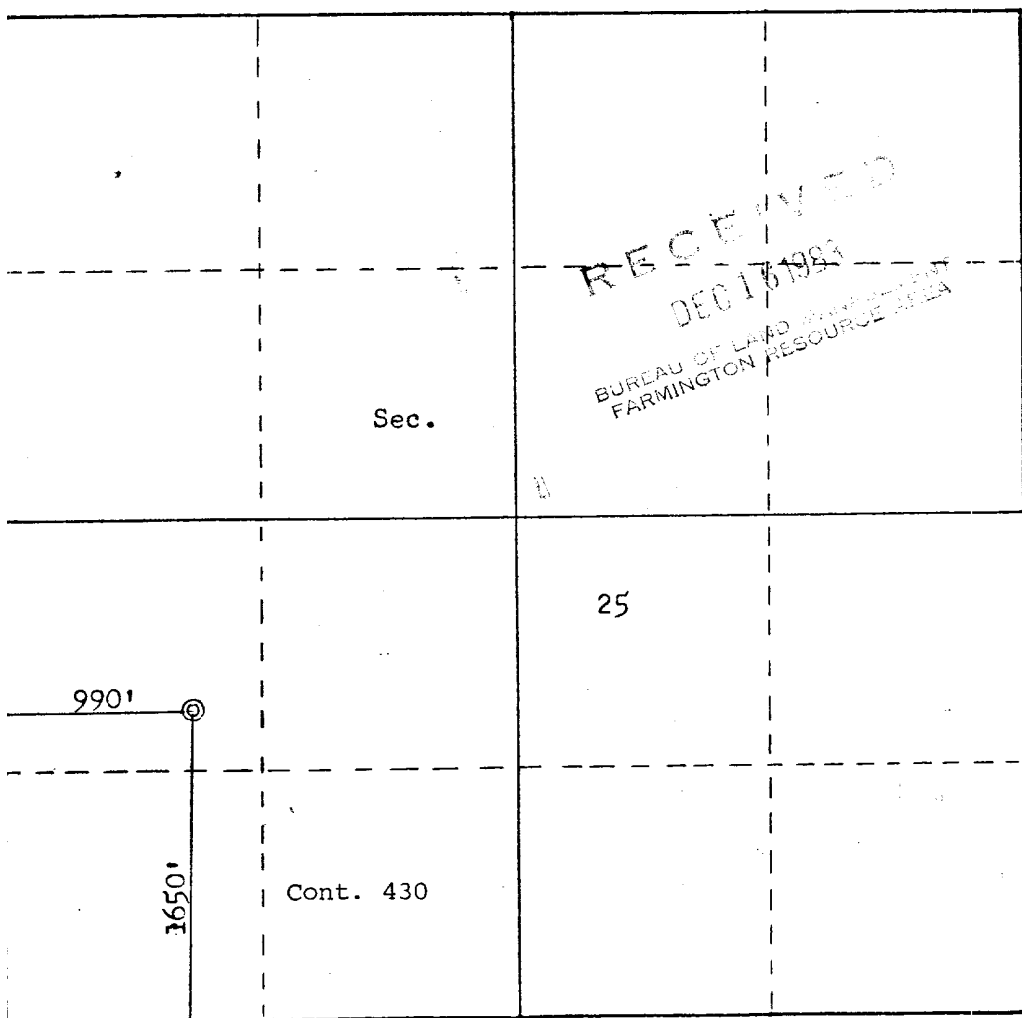
Operator: MERRION OIL & GAS CORPORATION			Lease: JICARILLA 430		Well No.: 7
Unit Letter: L	Section: 25	Township: 23N	Range: 5W	County: Sandoval	
Actual Footage Location of Well: 1650 feet from the South line and 990 feet from the West line					
Ground Level Elev.: 6883	Producing Formation: Gallup		Pool: Undes. Gallup		Dedicated Acreage: 40 Acres

1. Outline the acreage dedicated to the subject well by colored pencil or hachure marks on the plat below.
2. If more than one lease is dedicated to the well, outline each and identify the ownership thereof (both as to working interest and royalty).
3. If more than one lease of different ownership is dedicated to the well, have the interests of all owners been consolidated by communitization, unitization, force-pooling, etc?

☐ Yes ☐ No If answer is "yes," type of consolidation _____

If answer is "no," list the owners and tract descriptions which have actually been consolidated. (Use reverse side of this form if necessary.) _____

No allowable will be assigned to the well until all interests have been consolidated (by communitization, unitization, forced-pooling, or otherwise) or until a non-standard unit, eliminating such interests, has been approved by the Commission.



Scale: 1"=1000'

CERTIFICATION

I hereby certify that the information contained herein is true and complete to the best of my knowledge and belief.

Name:
Steve S. Dunn

Position:
Operations Manager

Company:
Merrion Oil & Gas Corporation

Date:
12/13/83

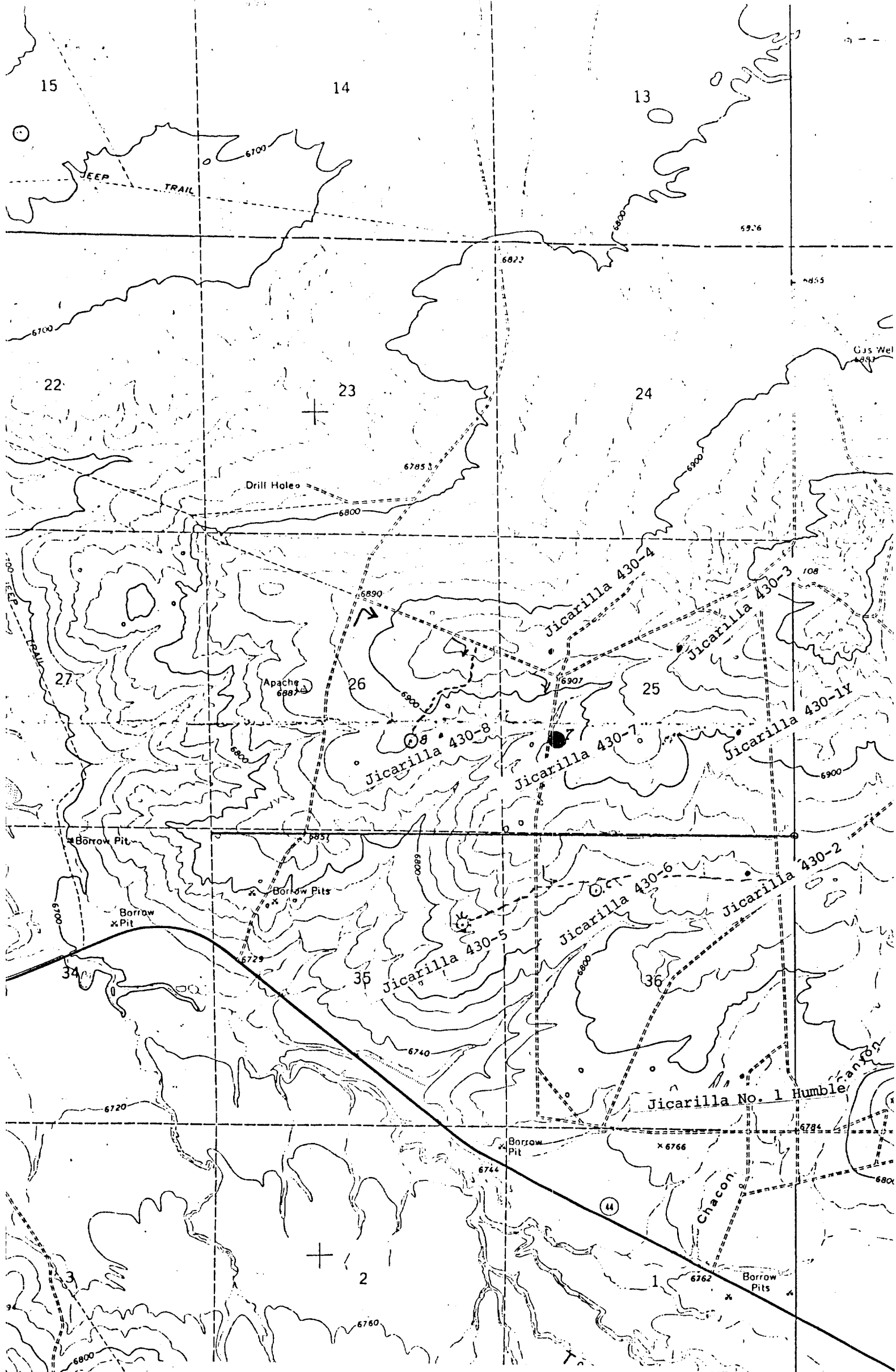
I hereby certify that the well location shown on this plat was plotted from field notes of actual surveys made by me or under my supervision, and that the same is true and correct to the best of my knowledge and belief.

Date Surveyed:
December 10, 1983

Registered Professional Engineer and Land Surveyor

Fred B. Kerr Jr.

Certificate No. **3950**



Vicinity Map for
MERRION OIL & GAS CORP. #7 JICARILLA 430
1650'FSL 990'FWL Sec. 25-T23N-R5W
SANDOVAL COUNTY, NEW MEXICO