

UNITED STATES  
DEPARTMENT OF THE INTERIOR  
BUREAU OF LAND MANAGEMENT

SUBMIT IN TRIPLICATE\*  
(Other instructions on  
reverse side)

Form approved.  
Budget Bureau No. 1004-0136  
Expires August 31, 1985

APPLICATION FOR PERMIT TO DRILL, DEEPEN, OR PLUG BACK

1a. TYPE OF WORK

DRILL ☒

DEEPEN ☐

PLUG BACK ☐

b. TYPE OF WELL

OIL  
WELL ☒

GAS  
WELL ☐

OTHER

SINGLE  
ZONE ☐

MULTIPLE  
ZONE ☐

2. NAME OF OPERATOR

Trend Exploration Limited

3. ADDRESS OF OPERATOR

777 Grant Street, Suite 600, Denver, Colorado 80203

4. LOCATION OF WELL (Report location clearly and in accordance with any State requirements.)

At surface

330' FNL, 2000' FEL, Section 33, T19N, R2W

At proposed prod. zone

14. DISTANCE IN MILES AND DIRECTION FROM NEAREST TOWN OR POST OFFICE

15 Miles South of Cuba, New Mexico

15. DISTANCE FROM PROPOSED\*

LOCATION TO NEAREST

PROPERTY OR LEASE LINE, FT.

(Also to nearest drlg. unit line, if any)

330'

18. DISTANCE FROM PROPOSED LOCATION\*

TO NEAREST WELL, DRILLING COMPLETED,  
OR APPLIED FOR, ON THIS LEASE, FT.

N/A

21. ELEVATIONS (Show whether DF, RT, GR, etc.)

6940' GL

23.

DRILLING OPERATIONS AUTHORIZED ARE  
SUBJECT TO COMPLIANCE WITH ATTACHED

"RECEIVED DOCUMENTS"

PERMITS, CASING, AND CEMENTING PROGRAM

17. NO. OF ACRES ASSIGNED  
TO THIS WELL

40

20. ROTARY OR CABLE TOOLS

Rotary

22. APPROX. DATE WORK WILL START\*

This action is subject to administrative  
appeal pursuant to 30 CFR 290.

SIZE OF HOLE	SIZE OF CASING	WEIGHT PER FOOT	SETTING DEPTH	QUANTITY OF CEMENT
12 1/4"	9 5/8"	36#	150'	110 SX
8 3/4"	7"	20#	2600'	485 SX
6 1/4"	4 1/2"	10.5#	3321'	100 SX

IN ABOVE SPACE DESCRIBE PROPOSED PROGRAM: If proposal is to deepen or plug back, give data on present productive zone and proposed new productive zone. If proposal is to drill or deepen directionally, give pertinent data on subsurface locations and measured and true vertical depths. Give blowout preventer program, if any.

24.

SIGNED

*Sean M. Muse*

TITLE

Production Supervisor

DATE

MAY 02, 1984

(This space for Federal or State office use)

PERMIT NO.

APPROVAL DATE

APPROVED BY

CONDITIONS OF APPROVAL, IF ANY

*ch 7*

NMOCC

RECEIVED  
JUN 01 1984  
OIL CON. DIV.  
DIST. 3  
AS AMENDED  
MAY 23 1984  
*John H. Hickey*

All distances must be from the outer boundaries of the Section.

Operator <b>TREND EXPLORATION LIMITED</b>			Lease <b>NM 38276</b>		Well No. <b>19-2-23-2</b>
Unit Letter <b>B</b>	Section <b>23</b>	Township <b>19N</b>	Range <b>2W</b>	County <b>Sandoval</b>	
Actual Footage Location of Well: <b>330</b> feet from the North line and <b>2000</b> feet from the East line					
Ground Level Elev. <b>6944</b>	Producing Formation <b>Gallup</b>	Pool <b>Undesignated WC</b>		Dedicated Acreage: <b>40</b> Acres	

1. Outline the acreage dedicated to the subject well by colored pencil or hachure marks on the plat below.
2. If more than one lease is dedicated to the well, outline each and identify the ownership thereof (both as to working interest and royalty).
3. If more than one lease of different ownership is dedicated to the well, have the interests of all owners been consolidated by communitization, unitization, force-pooling, etc?

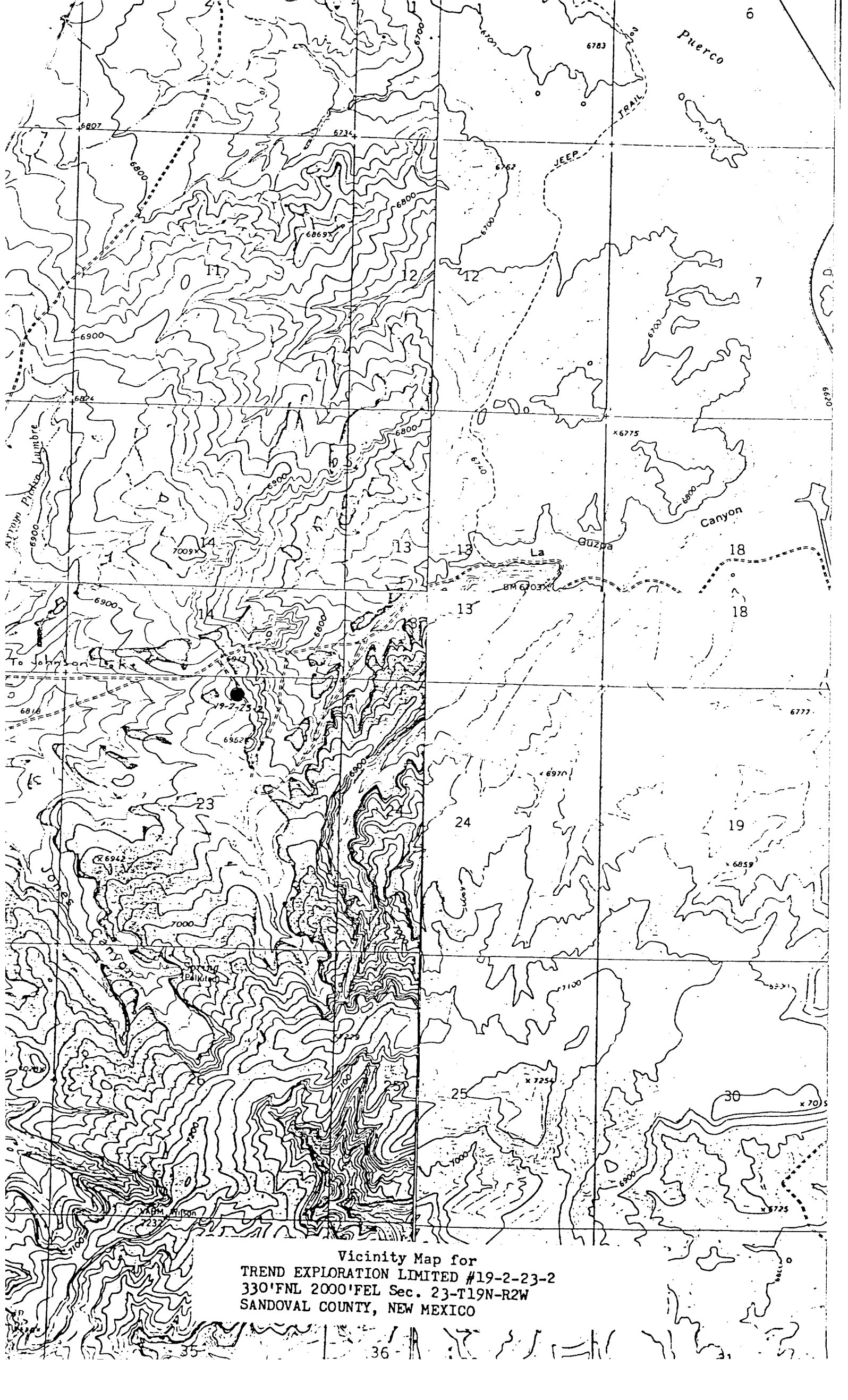
☐ Yes ☐ No If answer is "yes," type of consolidation \_\_\_\_\_

If answer is "no," list the owners and tract descriptions which have actually been consolidated. (Use reverse side of this form if necessary.) \_\_\_\_\_

No allowable will be assigned to the well until all interests have been consolidated (by communitization, unitization, forced-pooling, or otherwise) or until a non-standard unit, eliminating such interests, has been approved by the Commission.

	330'	2000'
	Sec.	
23		
RECEIVED MAY 08 1984 BUREAU OF LAND MANAGEMENT SANTIAGO, NEW MEXICO RECEIVED JUN 01 1984 OIL CON. DIV.		

CERTIFICATION  I hereby certify that the information contained herein is true and complete to the best of my knowledge and belief.	
Name	<b>Robert Inskeep</b>
Position	<b>Agent</b>
Company	<b>Trend Exploration Limited</b>
Date	<b>April 9, 1984</b>
I hereby certify that the well location shown on this plat was plotted from field notes of actual surveys made by me or under my supervision, and that the same is true and correct to the best of my knowledge and belief.	
Date Surveyed	<b>April 5, 1984</b>
Registered Professional Engineers and Land Surveyors 	



Vicinity Map for  
TREND EXPLORATION LIMITED #19-2-23-2  
330'FNL 2000'FEL Sec. 23-T19N-R2W  
SANDOVAL COUNTY, NEW MEXICO