

UNITED STATES  
DEPARTMENT OF THE INTERIOR  
BUREAU OF LAND MANAGEMENT

APPLICATION FOR PERMIT TO DRILL, DEEPEN, OR PLUG BACK

1a) TYPE OF WORK

DRILL ☒

DEEPEN ☐

PLUG BACK ☐

b. TYPE OF WELL

OIL  
WELL ☒

GAS  
WELL ☐

OTHER ☐

SINGLE  
ZONE ☐

MULTIPLE  
ZONE ☐

2. NAME OF OPERATOR

Gary-Williams Oil Producer, Inc. c/o Ned Dollar (Agent)

3. ADDRESS OF OPERATOR

P.O. Box 399 Aztec, NM 87410

4. LOCATION OF WELL (Report location clearly and in accordance with any State requirements.)

At surface 1980' FSL & 1980' FSL Section 13, T20N, R3W RECEIVED

At proposed prod. zone

MAY 15 1984

14. DISTANCE IN MILES AND DIRECTION FROM NEAREST TOWN OR POST OFFICE\*

4 miles south and 8 miles west of Cuba, NM

15. DISTANCE FROM PROPOSED\*

LOCATION TO NEAREST  
PROPERTY OR LEASE LINE, FT.  
(Also to nearest drig. unit line, if any)

16. NO. OF ACRES IN LEASE

1920

17. NO. OF ACRES ASSIGNED

TO THIS WELL  
320

18. DISTANCE FROM PROPOSED LOCATION\*

TO NEAREST WELL, DRILLING, COMPLETED,  
OR APPLIED FOR, ON THIS LEASE, FT.

19. PROPOSED DEPTH

4202'

20. ROTARY OR CABLE TOOLS

Rotary

21. ELEVATIONS (Show whether DF, RT, GR, etc.)

6879'

DRILLING OPERATIONS AUTHORIZED ARE  
SUBJECT TO COMPLIANCE WITH ATTACHED

22. APPROX. DATE WORK WILL START\*

Upon approval

23. PROPOSED PLACING AND CEMENTING PROGRAM

This action is subject to administrative  
appeal pursuant to 30 CFR 290.

SIZE OF HOLE	SIZE OF CASING	WEIGHT PER FOOT	SETTING DEPTH	QUANTITY OF CEMENT
13-1/2"	9-5/8"	36# J-55	200'	Cement to Surface
8-3/4"	7"	23# K-55	3544'	Determined by Caliper Log
6"	4-1/2"	10.50J	4202'	5 sx Cement

Drill 13-1/2" Surface hole to 200'. Cmt. to surface. Drill 8-3/4" hole to 3544'.  
Cement thru Ojo Alamo. Run 7" 23# K-55 LTC to TD. Cmt. w/approximate 1000' fill.

Surface to be drilled with 9# mud weight viscosity 45' to 200', from 200' to  
50' above Gallup, will be drilled with 14# mud weight viscosity. From 50'  
above Gallup to TD with air mist.

RECEIVED

JUN 2 8 1984

OIL CON. DIV.

DIST. 3

IN ABOVE SPACE DESCRIBE PROPOSED PROGRAM: If proposal is to deepen or plug back, give data on present productive zone and proposed new productive zone. If proposal is to drill or deepen directionally, give pertinent data on subsurface locations and measured and true vertical depths. Give blowout preventer program, if any.

SIGNED Ned Dollar TITLE Agent DATE May 8, 1984

(This space for Federal or State office use)

PERMIT NO.

APPROVAL DATE

APPROVED  
AS AMENDED

APPROVED BY

NMOCC

JUN 2 6 1984

M. MILLENBACH  
AREA MANAGER

**NEW MEXICO OIL CONSERVATION COMMISSION  
WELL LOCATION AND ACREAGE DEDICATION PLAT**

Form C-102  
Supersedes C-128  
Effective 1-1-65

All distances must be from the outer boundaries of the Section.

Operator <b>GARY-WILLIAMS OIL PRODUCER, INC.</b>			Lease <b>SAN YSIDRO 13</b>		Well No. <b>11</b>
Unit Letter <b>K</b>	Section <b>13</b>	Township <b>20 NORTH</b>	Range <b>3 WEST</b>	County <b>SANDOVAL</b>	
Actual Footage Location of Wells: <div style="display: flex; justify-content: space-between;"> <span>1980 feet from the <b>SOUTH</b> line and</span> <span>1980 feet from the <b>WEST</b> line</span> </div>					
Ground Level Elev. <b>6879</b>	Producing Formation <b>Rio Puerco Mancos</b>	Pool	Dedicated Acreage: <b>320</b> Acres		

1. Outline the acreage dedicated to the subject well by colored pencil or hatchure marks on the plat below.
2. If more than one lease is dedicated to the well, outline each and identify the ownership thereof (both as to working interest and royalty).
3. If more than one lease of different ownership is dedicated to the well, have the interests of all owners been consolidated by communitization, unitization, force-pooling, etc?

☐ Yes   ☐ No   If answer is "yes," type of consolidation \_\_\_\_\_

If answer is "no," list the owners and tract descriptions which have actually been consolidated. (Use reverse side of this form if necessary.) \_\_\_\_\_

No allowable will be assigned to the well until all interests have been consolidated (by communitization, unitization, forced-pooling, or otherwise) or until a non-standard unit, eliminating such interests, has been approved by the Commission.

	<p><b>RECEIVED</b></p> <p>JUN 20 1984</p> <p><b>OIL CON. DIV.</b></p> <p><b>DIST. 3</b></p> <p>13</p> <p><b>RECEIVED</b></p> <p>MAY 15 1984</p> <p>BUREAU OF LAND MANAGEMENT</p>
--	--

<b>CERTIFICATION</b>	
I hereby certify that the information contained herein is true and complete to the best of my knowledge and belief.	
Name <i>Michael Daly</i>	
Position <i>Agent</i>	
Company <i>Gary Williams Oil</i>	
Date <i>May 1, 1984</i>	
<p>I hereby certify that the well location shown on this plat was plotted from field notes of <b>Michael Daly</b> surveys made by me or under my supervision, and that the same are true and correct to the best of my knowledge and belief.</p> <p align="center"><b>Michael Daly</b></p>	
Date Surveyed <b>April 26, 1984</b>	
Registered Professional Engineer and/or Land Surveyor	
<b>Michael Daly</b>	

## OIL CONSERVATION DIVISION

STATE OF NEW MEXICO  
ENERGY AND MINERALS DEPARTMENTP. O. BOX 2088  
SANTA FE, NEW MEXICO 87501Form C-102  
Revised 10-1-78

All distances must be from the outer boundaries of the Section.

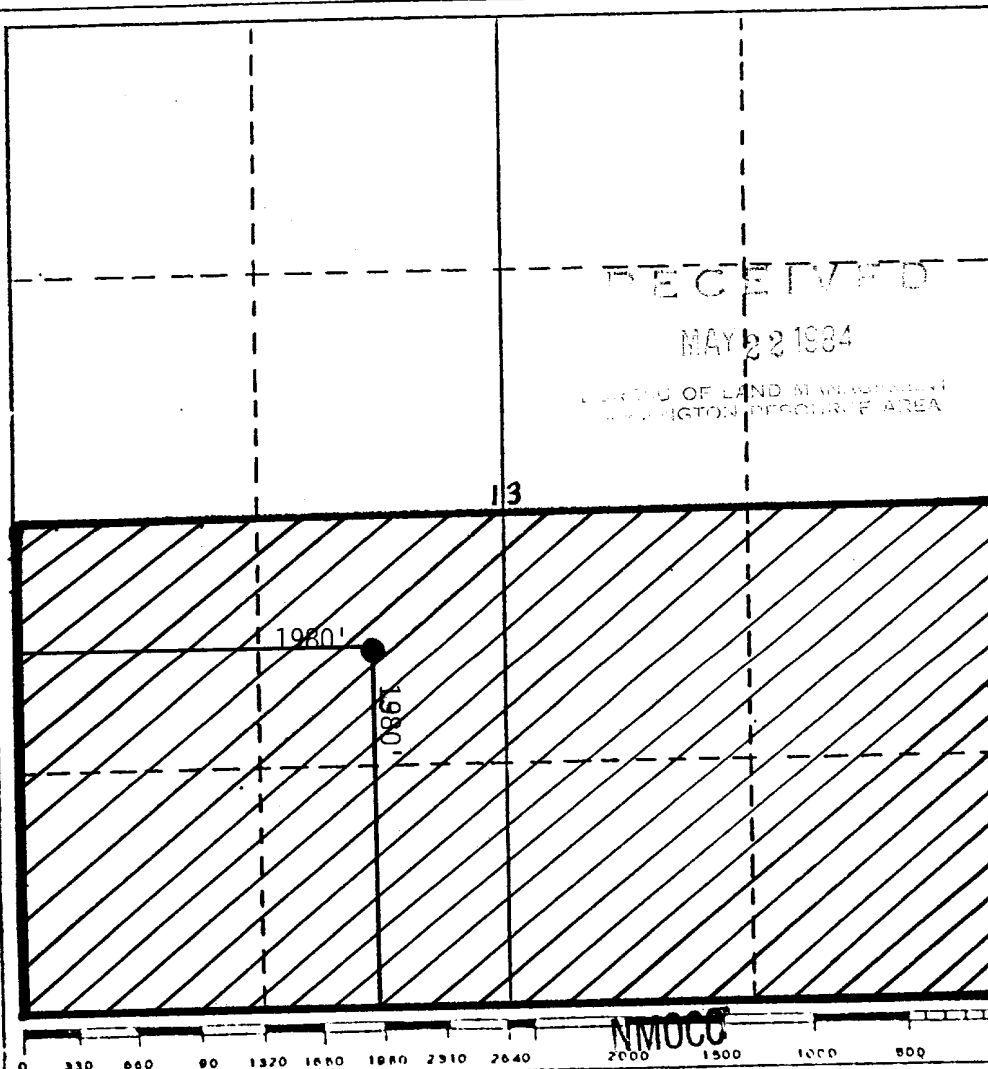
Operator Gary-Williams Oil Producer, Inc.		Lease San Isidro 13		Well No. 11
Unit Letter K	Section 13	Township 20N	Range 3W	County Sandoval
Actual Footage Location of Well:				
1980 feet from the West line and		1980 feet from the South line		
Ground Level Elev. 6879'	Producing Formation Mancos	Pool Rio Puerco	Dedicated Acreage: S-320 Acres	

1. Outline the acreage dedicated to the subject well by colored pencil or hachure marks on the plat below.
2. If more than one lease is dedicated to the well, outline each and identify the ownership thereof (both as to working interest and royalty).
3. If more than one lease of different ownership is dedicated to the well, have the interests of all owners been consolidated by communitization, unitization, force-pooling, etc?

☐ Yes ☒ No If answer is "yes," type of consolidation \_\_\_\_\_

If answer is "no," list the owners and tract descriptions which have actually been consolidated. (Use reverse side of this form if necessary.) \_\_\_\_\_

No allowable will be assigned to the well until all interests have been consolidated (by communitization, unitization, forced-pooling, or otherwise) or until a non-standard unit, eliminating such interests, has been approved by the Division.



## CERTIFICATION

I hereby certify that the information contained herein is true and complete to the best of my knowledge and belief.

Name  
Ray Hager

Position  
Operations Superintendent

Company  
Gary-Williams Oil Producer

Date  
May 14, 1984

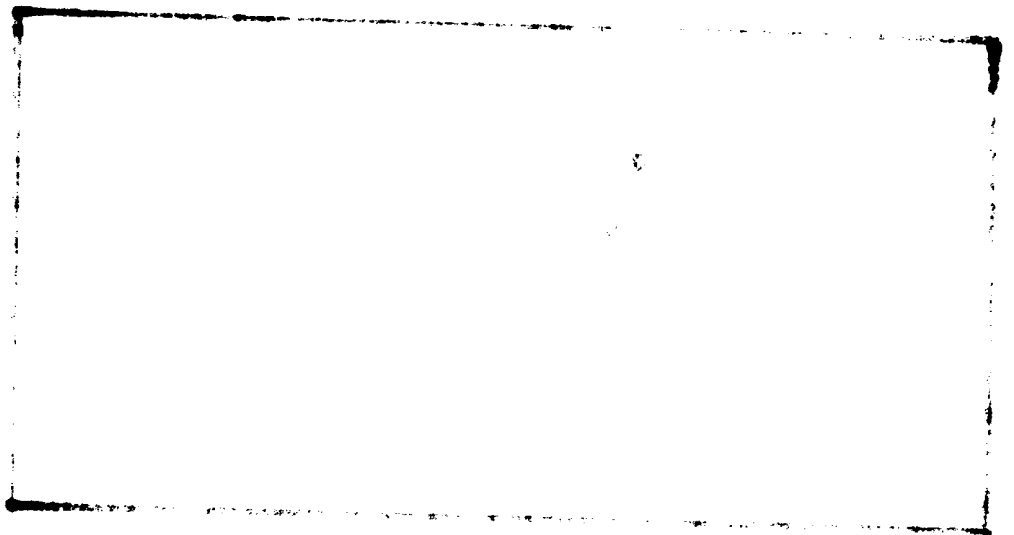
I hereby certify that the well location shown on this plat was plotted from field notes of actual surveys made by me or under my supervision, and that the same is true and correct to the best of my knowledge and belief.

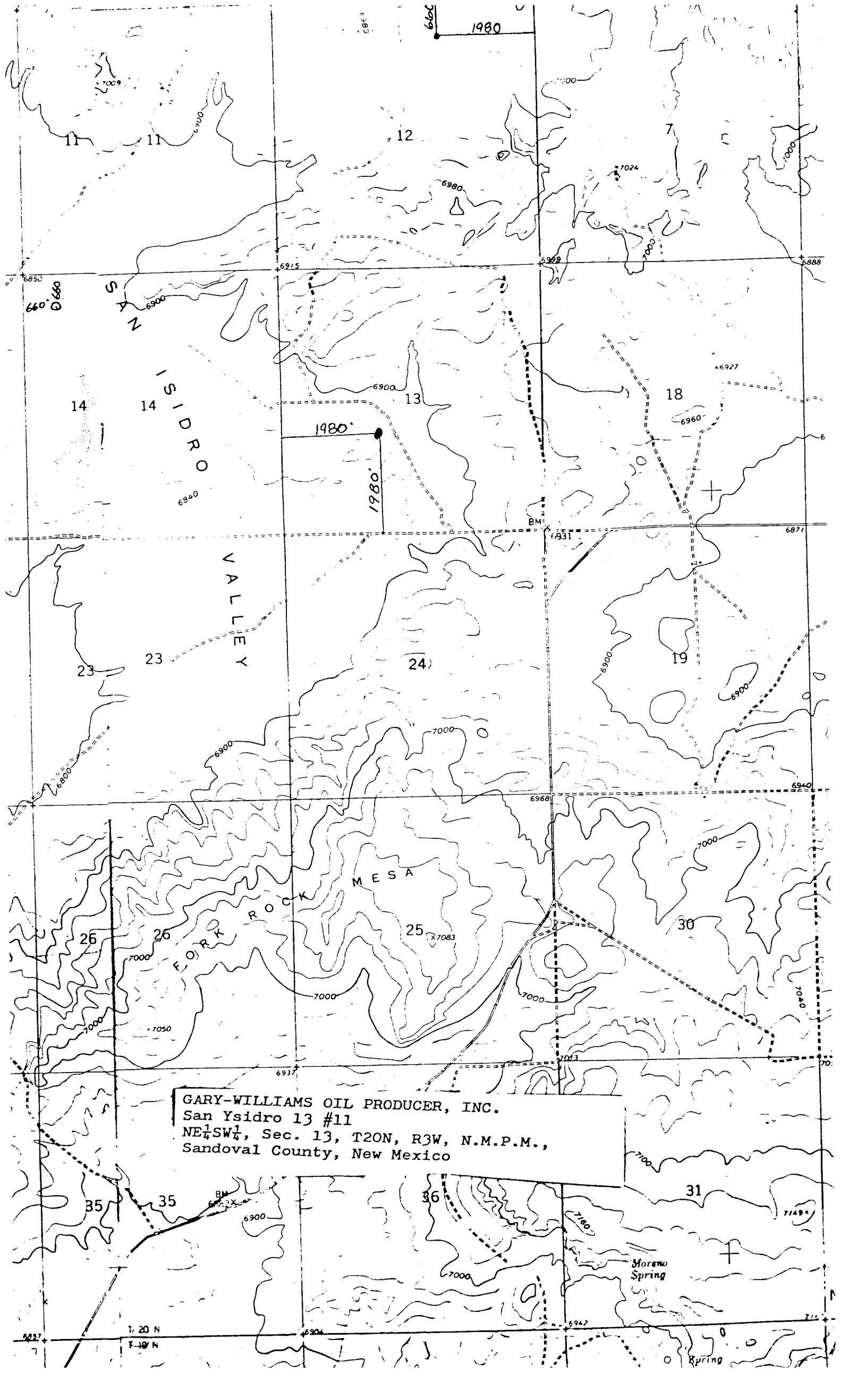
Date Surveyed

Registered Professional Engineer  
and/or Land Surveyor

Certificate No.

100-100000-100000





GARY-WILLIAMS OIL PRODUCER, INC.  
San Ysidro 13 #11  
NE 1/4 SW 1/4, Sec. 13, T20N, R3W, N.M.P.M.,  
Sandoval County, New Mexico

Moreno  
Spring

T. 20 N  
R. 3 W