

50-043-20724

UNITED STATES  
DEPARTMENT OF THE INTERIOR  
BUREAU OF LAND MANAGEMENT

1. FIELD OFFICE AND SPECIAL NO.  
LM-25611  
2. IF INDIAN, ADOPTER OR TRIBE NAME

APPLICATION FOR PERMIT TO DRILL, DEEPEN, OR PLUG BACK

1. TYPE OF WORK: DRILL ☒ DEEPEN ☐ PLUG BACK ☐

2. TYPE OF WELL: OIL WELL ☒ GAS WELL ☐ OTHER ☐ SINGLE ZONE ☐ MULTIPLE ZONE ☐

3. NAME OF OPERATOR: Gary-Williams Oil Producer, Inc. c/o Ned Dollar, (Agent)

4. ADDRESS OF OPERATOR: P.O. Box 399 Aztec, NM 87410

5. LOCATION OF WELL (Report location clearly and in accordance with any State requirements):  
At surface: 660' FNL & 1980' FEL Section 25, T21N, R4W, E1N E D  
At proposed prod. zone: 5888' to 5936'

6. UNIT AGREEMENT NAME

7. FARM OR LEASE NAME: Ceja Pelon 25

8. WELL NO.: #2

9. FIELD AND POOL, OR WILDCAT: Undesignated-Gallup

10. SEC., T., E., M., OR BLK. AND SURVEY OR AREA: B WNE Sec. 25-21N-R4W

11. COUNTY OR PARISH: Sandoval

12. STATE: NM

13. DISTANCE IN MILES AND DIRECTION FROM NEAREST TOWN OR POST OFFICE: 14 miles west of Cuba, New Mexico.

14. DISTANCE FROM PROPOSED LOCATION TO NEAREST PROPERTY OR LEASE LINE, FT. (Also to nearest drig. unit line, if any): 40 1716

15. DISTANCE FROM PROPOSED LOCATION TO NEAREST WELL DRILLING COMPLETED OR APPLIED FOR, ON THIS LEASE, FT.: 5888' to 5936'

16. NO. OF ACRES IN LEASE: 40 1716

17. NO. OF ACRES ASSIGNED TO THIS WELL: 1760 40

18. ROTARY OR CABLE TOOLS: Rotary

19. APPROX. DATE WORK WILL START: May 6, 1984

20. ELEVATIONS (Show whether DF, RT, GR, etc.): 7108' GR

21. DRILLING OPERATIONS AUTHORIZED ARE SUBJECT TO COMPLIANCE WITH ATTACHED "GENERAL REQUIREMENTS" CEMENTING PROGRAM

22. This action is subject to administrative appeal pursuant to 30 CFR 290.

SIZE OF HOLE	SIZE OF CASING	WEIGHT PER FOOT	SETTING DEPTH	QUANTITY OF CEMENT
13-1/2"	9-5/8"	36# J-55	200'	Cement to surface
8-3/4"	7"	23# K-55	3700'	Determined by Caliper Log
6"	4-1/2"	10.50J	4445'	5 sx cement

Drill 13-1/2" Surface hole to 200'. Cmt. to surface. Drill 8-3/4" hole to 3700'. Cement thru Ojo Alamo. Run 7" 23# K-55 LTC to TD. Cmt. w/approximate 1000' fill.

Surface to be drilled with 9# mud weight viscosity 45' to 200', from 200' to 50' above Gallup, will be drilled with 14# Mud weight Viscosity. From 50' above Gallup to TD with air mist.

Gary-Williams Oil Producer, Inc. proposes to drill to 5888' if the zone is wet, they plan to drill to Burro Canyon depth of 5936'.

IN ABOVE SPACE DESCRIBE PROPOSED PROGRAM: If proposal is to deepen or plug back, give data on present productive zone and proposed new productive zone. If proposal is to drill or deepen directionally, give pertinent data on subsurface locations and measured and true vertical depths. Give blowout prevention program, if any.

SIGNED: *Ned Dollar* TITLE: Agent

(This space for Federal or State Agency Use)

PERMIT NO. RECEIVED JUL 09 1984

APPROVED BY: *J. Stan McKee* TITLE: AREA MANAGER FARMINGTON RESOURCE AREA

DATE: JUL 05 1984

OIL CON. DIV. DIST. 3

AMOC

\*See Instructions On Reverse Side

APPROVED AS AMENDED JUL 05 1984

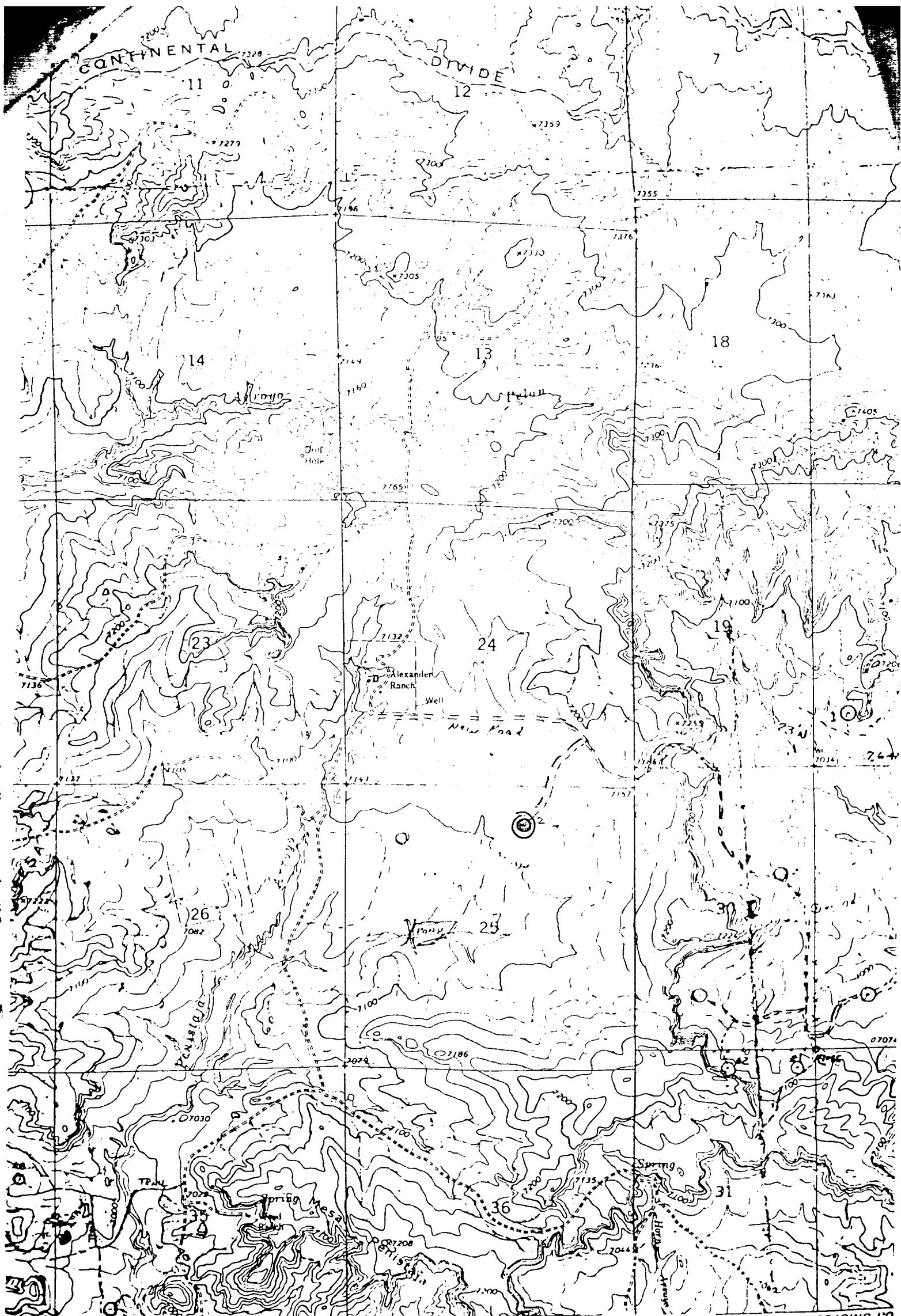
18 U.S.C. Section 1001, makes it a crime for any person knowingly and willfully to make to any department or agency of the United States any false, fictitious or fraudulent statements or representations as to any matter within its jurisdiction.

All distances must be from the outer boundaries of the Section

No allowable will be assigned to the well until all interests have been consolidated (by communitization, unitization, forced-pooling, or otherwise) or until a non-standard unit, eliminating such interests, has been approved by the Commission.

<p align="center"><b>CERTIFICATION</b></p> <p>I hereby certify that the information contained herein is true and complete to the best of my knowledge and belief.</p>	
Name	<i>Bob Wells</i>
Position	<i>Agent</i>
Company	<i>Barry-William Oil Prod</i>
Date	<i>April 25, 1984</i>
<p>I hereby certify that the well location shown on this plat was plotted from field notes of actual surveys made by me or under my supervision, and that the same is true and correct to the best of my knowledge and belief.</p>	
Date Surveyed	<i>May 9, 1984</i>
Registered Professional Engineer and Land Surveyor	<i>Fred B. Kerr Jr.</i> <i>Fred B. Kerr Jr.</i>
Certificate No.	<i>3950</i>

Scale: 1"=1000'



d by the Geological Survey  
81963  
1963

Vicinity Map for  
GARY-WILLIAMS OIL PRODUCING CO. #2 CEJA PRISON 25  
660'FNL 1980'FEL Sec. 25-T21N-R1W  
SANDOVAL COUNTY, NEW MEXICO

JOHNSON TRADING CO.  
SCALE 1:24,000