

UNITED STATES
DEPARTMENT OF THE INTERIOR
BUREAU OF LAND MANAGEMENT

APPLICATION FOR PERMIT TO DRILL, DEEPEN, OR PLUG BACK

1a. TYPE OF WORK

DRILL ☒

DEEPEN ☐

PLUG BACK ☐

b. TYPE OF WELL

OIL
WELL ☒

GAS
WELL ☐

OTHER

Comingled

SINGLE
ZONE ☐

MULTIPLE
ZONE ☐

2. NAME OF OPERATOR

W.E. Martin and Associates

3. ADDRESS OF OPERATOR

709 N. Butler, Farmington, New Mexico 87401

4. LOCATION OF WELL (Report location clearly and in accordance with any State requirements.)*

At surface

1650' FSL and 1650' FEL

At proposed prod. zone

14. DISTANCE IN MILES AND DIRECTION FROM NEAREST TOWN OR POST OFFICE*

15 miles NW of Cuba, N.M.

15. DISTANCE FROM PROPOSED*

LOCATION TO NEAREST

PROPERTY OR LEASE LINE, FT.

(Also to nearest drig. unit line, if any)

1650'

16. NO. OF ACRES IN LEASE

1920

17. NO. OF ACRES ASSIGNED

TO THIS WELL

160 4/0

18. DISTANCE FROM PROPOSED LOCATION*

TO NEAREST WELL, DRILLING, COMPLETED,

OR APPLIED FOR, ON THIS LEASE, FT.

NA

19. PROPOSED DEPTH

7180

20. ROTARY OR CABLE TOOLS

Rotary

21. ELEVATIONS (Show whether DF, RT, GR, etc.)

7127 GR

DRILLING OPERATIONS AUTHORIZED ARE

SUBJECT TO COMPLIANCE WITH ATTACHED

PROPOSED CASING AND CEMENTING PROGRAM

"GENERAL REQUIREMENTS"

22. APPROX. DATE WORK WILL START*

Dependant Upon Approval

23.

This action is subject to administrative

appeal pursuant to 30 CFR 290.

SIZE OF HOLE	SIZE OF CASING	WEIGHT PER FOOT	SETTING DEPTH	
12 1/4"	9 5/8"	36	250'	206.50 ft ³
8 3/4"	7"	23	5150'	700.00 ft ³
6 1/4"	4 1/2"	11.60	7180'	320.00 ft ³

Proposed Program:

1. Drill 12 1/4" hole to $\pm 250'$ with spud mud. Run and cement surface. WCC 12 hours. Pressure test BOP to 1000 PSI.
2. Drill 8 3/4" hole to $\pm 5150'$. Run and cement intermediate. WCC 12 hours.
3. Drill 6 1/4" hole to $\pm 7180'$ with air. Run and cement 4 1/2" line.

RECEIVED
JUL 16 1984
OIL CON. DIV.
DIST. 3

RECEIVED

JUL 3 1984

IN ABOVE SPACE DESCRIBE PROPOSED PROGRAM: If proposal is to deepen or plug back, give data on proposed new productive zone. If proposal is to drill or deepen directionally, give present data on subsurface locations and measured and true vertical depths. Give blowout preventer program, if any.

24.

SIGNED

W.E. Martin

TITLE

Operator

(This space for Federal or State office use)

PERMIT NO.

APPROVAL DATE

APPROVED BY

TITLE

CONDITIONS OF APPROVAL, IF ANY:

ch

NMOCC

*See Instructions On Reverse Side

APPROVED
JUL 12 1984

AS AMENDED
JUL 12 1984

AREA MANAGER
FARMINGTON RESOURCE AREA

All distances must be from the outer boundaries of the Section.

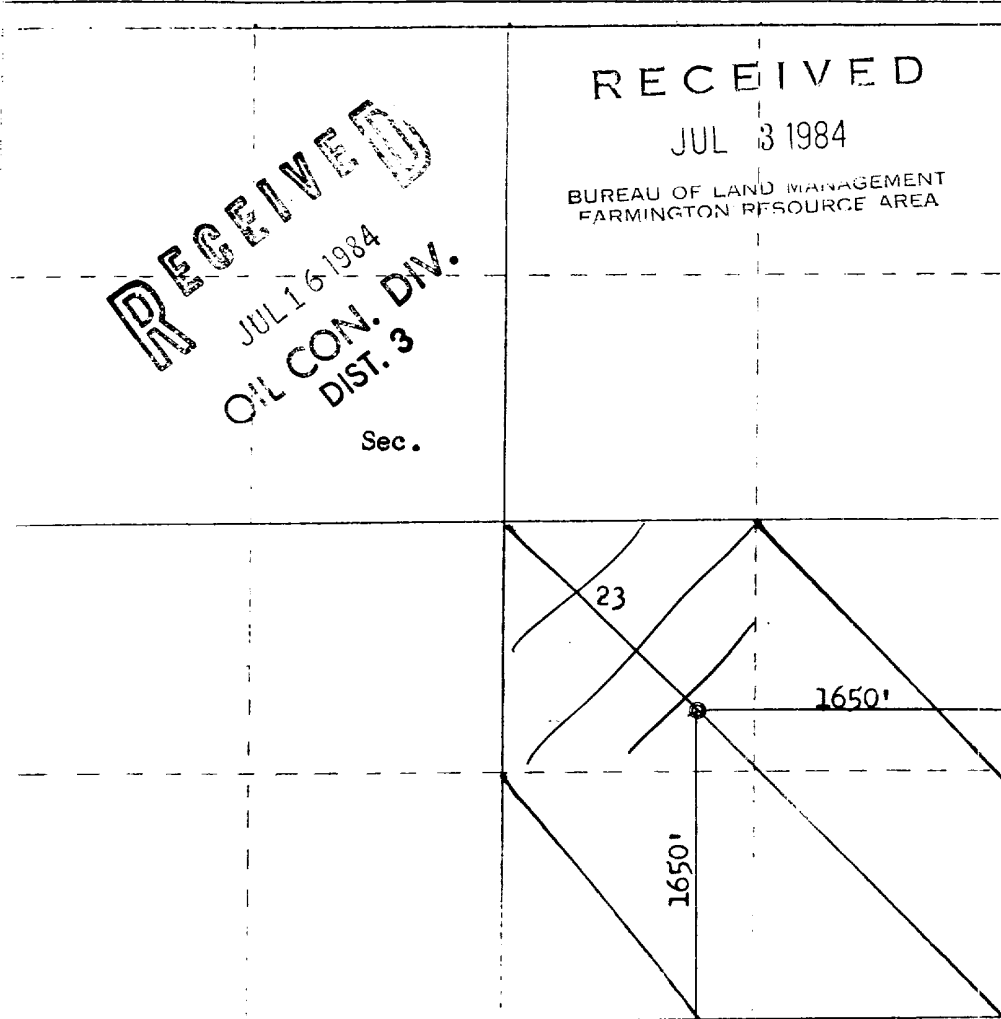
Operator W. B. MARTIN & ASSOCIATES			Lease MARTIN-WHITAKER		Well No. 53
Well Letter J	Section 23	Township 23N	Range 4W	County Sandoval	
Actual Footage Location of Well: 1650 feet from the South line and 1650 feet from the East line					
Sound Level Elev. 7127	Producing Formation Gallup-Dakota		Pool Wildcat S Line		Dedicated Acreage: 40.160 Acres

1. Outline the acreage dedicated to the subject well by colored pencil or hatchure marks on the plat below.
2. If more than one lease is dedicated to the well, outline each and identify the ownership thereof (both as to working interest and royalty).
3. If more than one lease of different ownership is dedicated to the well, have the interests of all owners been consolidated by communitization, unitization, force-pooling, etc?

☐ Yes ☐ No If answer is "yes," type of consolidation _____

If answer is "no," list the owners and tract descriptions which have actually been consolidated. (Use reverse side of this form if necessary.) _____

No allowable will be assigned to the well until all interests have been consolidated (by communitization, unitization, forced-pooling, or otherwise) or until a non-standard unit, eliminating such interests, has been approved by the Commission.



Scale: 1"=1000'

CERTIFICATION

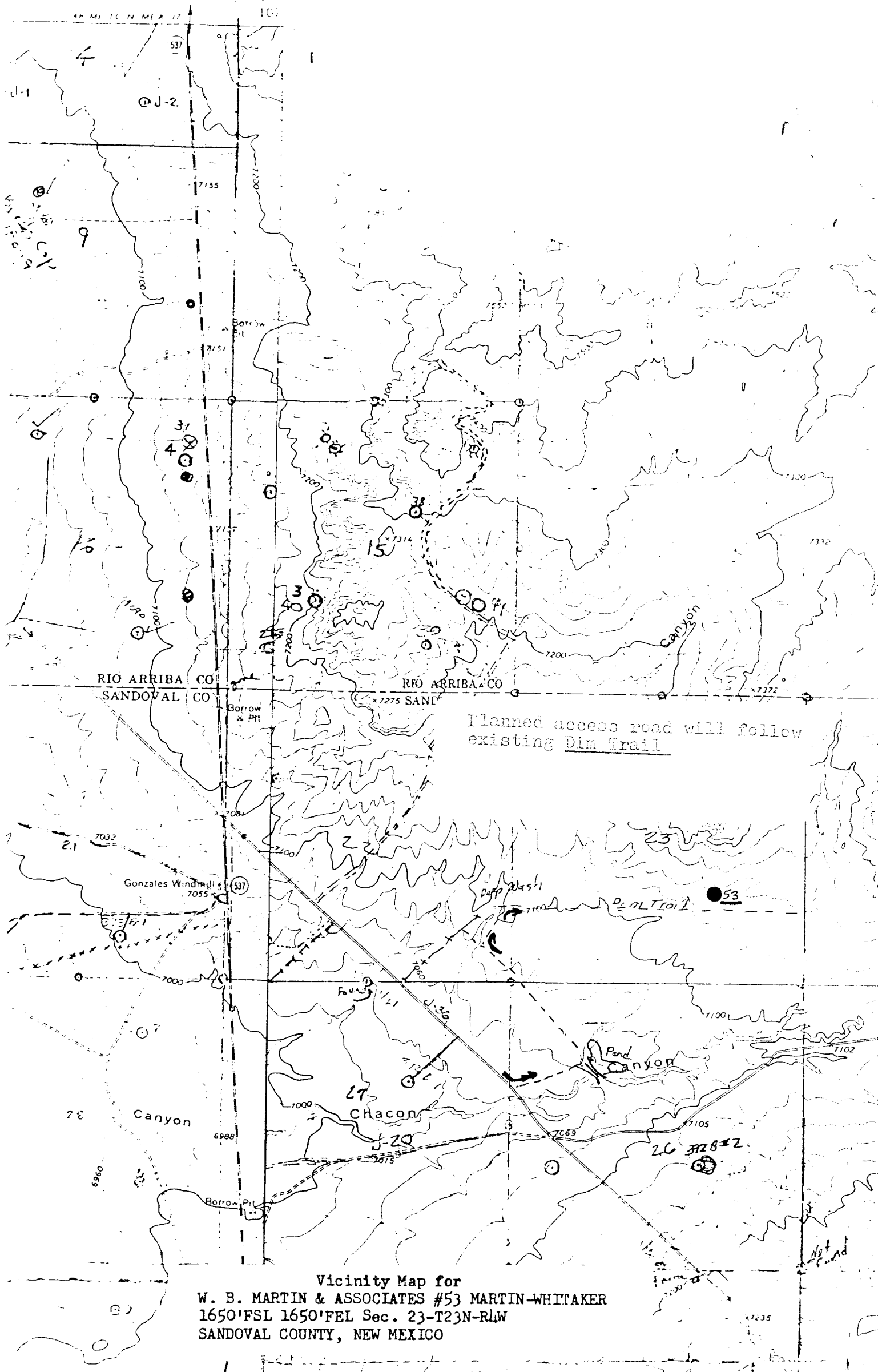
I hereby certify that the information contained herein is true and complete to the best of my knowledge and belief.

Name
W.B. Martin
Position
President
Company
W.B. Martin & Associates
Date
June 28, 1984

I hereby certify that the well location shown on this plat was plotted from field notes of actual surveys made by me or under my supervision, and that the same is true and correct to the best of my knowledge and belief.

Date Surveyed
June 22, 1984
Registered Professional Engineer and Land Surveyor
Fred B. Kerr Jr.
Fred B. Kerr Jr.
Certificate No. 4500
3950

USA WINDMILL QUADRANT
NEW MEXICO
MINUTE SERIES (TOPOGRAPHIC)



Vicinity Map for
W. B. MARTIN & ASSOCIATES #53 MARTIN-WHITAKER
1650'FSL 1650'FEL Sec. 23-T23N-R4W
SANDOVAL COUNTY, NEW MEXICO