

30-043-20731

Form approved.  
Budget Bureau No. 1004-0136  
Expires August 31, 1985

UNITED STATES  
DEPARTMENT OF THE INTERIOR  
BUREAU OF LAND MANAGEMENT

APPLICATION FOR PERMIT TO DRILL, DEEPEN, OR PLUG BACK

1a. TYPE OF WORK DRILL ☒ DEEPEN ☐ PLUG BACK ☐

b. TYPE OF WELL OIL WELL ☒ GAS WELL ☐ OTHER ☐ SINGLE ZONE ☐ MULTIPLE ZONE ☐

2. NAME OF OPERATOR  
Gary-Williams Oil Producer, Inc. c/o Ned Dollar, (Agent)

3. ADDRESS OF OPERATOR  
P.O. Box 399 Aztec, NM 87410

4. LOCATION OF WELL (Report location clearly and in accordance with any State requirements.\*)  
At surface 1650' FNL & 1980' FEL Section 15, T20N., R3W.  
At proposed prod. zone

14. DISTANCE IN MILES AND DIRECTION FROM NEAREST TOWN OR POST OFFICE\*  
3 1/2 miles south and 10 miles west of Cuba, NM.

15. DISTANCE FROM PROPOSED\*  
LOCATION TO NEAREST  
PROPERTY OR LEASE LINE, FT.  
(Also to nearest drig. unit line, if any)

16. NO. OF ACRES IN LEASE

1920

17. NO. OF ACRES ASSIGNED  
TO THIS WELL

E 320

18. DISTANCE FROM PROPOSED LOCATION\*  
TO NEAREST WELL, DRILLING, COMPLETED,  
OR APPLIED FOR, ON THIS LEASE, FT.

19. PROPOSED DEPTH

4372'

20. ROTARY OR CABLE TOOLS

Rotary

21. ELEVATIONS (Show whether DF, RT, GR, etc.)  
6835' GR

DRILLING OPERATIONS AUTHORIZED ARE  
SUBJECT TO COMPLIANCE WITH ATTACHED  
GENERAL REQUIREMENTS CEMENTING PROGRAM

22. APPROX. DATE WORK WILL START\*

Upon approval

23. ~~PROPOSED PROGRAM~~ CEMENTING PROGRAM

This action is subject to administrative  
appeal pursuant to 30 CFR 290.

SIZE OF HOLE	SIZE OF CASING	WEIGHT PER FOOT	SETTING DEPTH
13-1/2"	9-5/8"	36# J-55	200'
8-3/4"	7"	23# K-55	3660'
6"	4-1/2"	10.50J	4372'

Cement to surface  
Determined by Caliper Log  
5 sx Cement

Drill 13-1/2" Surface hole to 200'. Cmt. to surface. Drill 8-3/4" hole to 3660'.  
Cement thru Ojo Alamo. Run 7" 23# K-55 LTC to TD. Cmt. w/approximate 1000' fill.

Surface to be drilled with 9# mud weight viscosity 45' to 200', from 200' to  
50' above Gallup, will be drilled with 14# mud weight viscosity. From 50'  
above Gallup to TD with air mist.

RECEIVED  
JUL 30 1984  
OIL CON. DIV.  
DIST. 3

RECEIVED

JUN 14 1984

BUREAU OF LAND MANAGEMENT  
FARMINGTON RESOURCE AREA

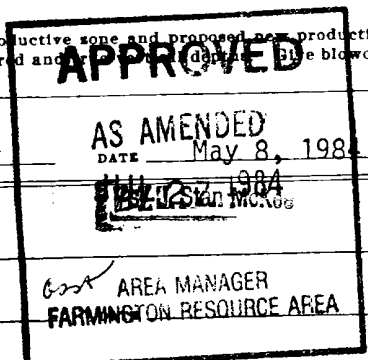
IN ABOVE SPACE DESCRIBE PROPOSED PROGRAM: If proposal is to deepen or plug back, give data on present productive zone and proposed new productive zone. If proposal is to drill or deepen directionally, give pertinent data on subsurface locations and measured and depth. If proposal is to plug back, give pertinent data on plug backout preventer program, if any.

24. SIGNED Ned Dollar TITLE Agent

(This space for Federal or State office use)

PERMIT NO. \_\_\_\_\_ APPROVAL DATE \_\_\_\_\_

APPROVED BY \_\_\_\_\_ TITLE \_\_\_\_\_  
CONDITIONS OF APPROVAL, IF ANY:



NMOCC

\*See Instructions On Reverse Side

**NEW MEXICO OIL CONSERVATION COMMISSION  
WELL LOCATION AND ACREAGE DEDICATION PLAT**

Form C-102  
Supersedes C-178  
Effective 1-1-83

All distances must be from the outer boundaries of the Section.

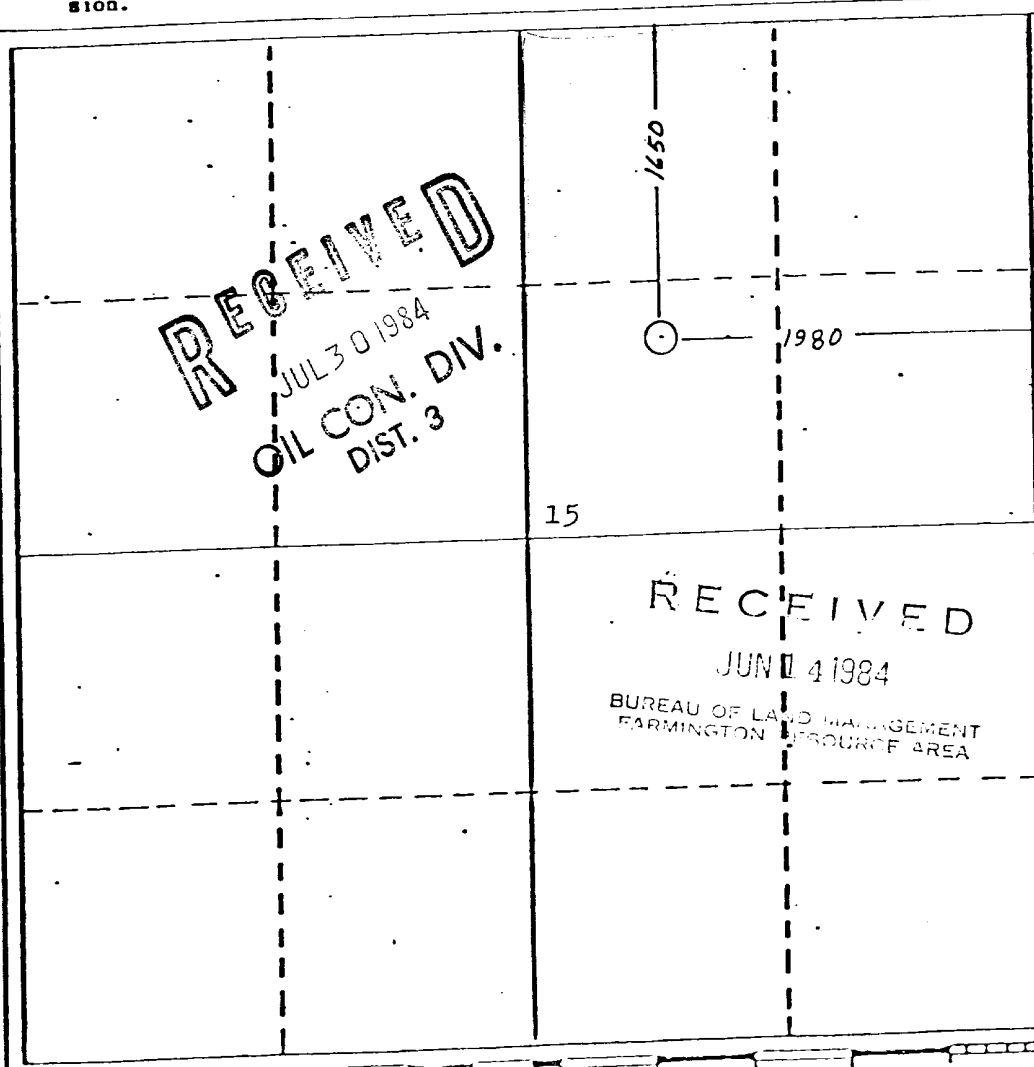
Operator <b>GARY-WILLIAMS OIL PRODUCER, INC.</b>		Lease <b>SAN YSIDRO 15</b>		Well No. <b>7</b>
Unit Letter <b>G</b>	Section <b>15</b>	Township <b>20 NORTH</b>	Range <b>3 WEST</b>	County <b>SANDOVAL</b>
Actual Footage Location of Well:				
<b>1650</b> feet from the <b>NORTH</b> line and <b>1980</b> feet from the <b>EAST</b> line		Dedicated Acreage: <b>320</b> Acres		
Ground Level Elev. <b>6835</b>	Producing Formation <b>Rio Puerco</b>	Pool <b>Mancos</b>		

1. Outline the acreage dedicated to the subject well by colored pencil or hatchure marks on the plat below.
2. If more than one lease is dedicated to the well, outline each and identify the ownership thereof (both as to working interest and royalty).
3. If more than one lease of different ownership is dedicated to the well, have the interests of all owners been consolidated by communitization, unitization, force-pooling, etc?

☐ Yes    ☒ No    If answer is "yes," type of consolidation \_\_\_\_\_

If answer is "no," list the owners and tract descriptions which have actually been consolidated. (Use reverse side of this form if necessary.) \_\_\_\_\_

No allowable will be assigned to the well until all interests have been consolidated (by communitization, unitization, forced-pooling, or otherwise) or until a non-standard unit, eliminating such interests, has been approved by the Commission.



**CERTIFICATION**

I hereby certify that the information contained herein is true and complete to the best of my knowledge and belief.

Name  
**Ned Dollar**

Position  
**Agent**

Company  
**Gary-Williams Oil Prod. Co.**

Date  
**June 11, 1984**

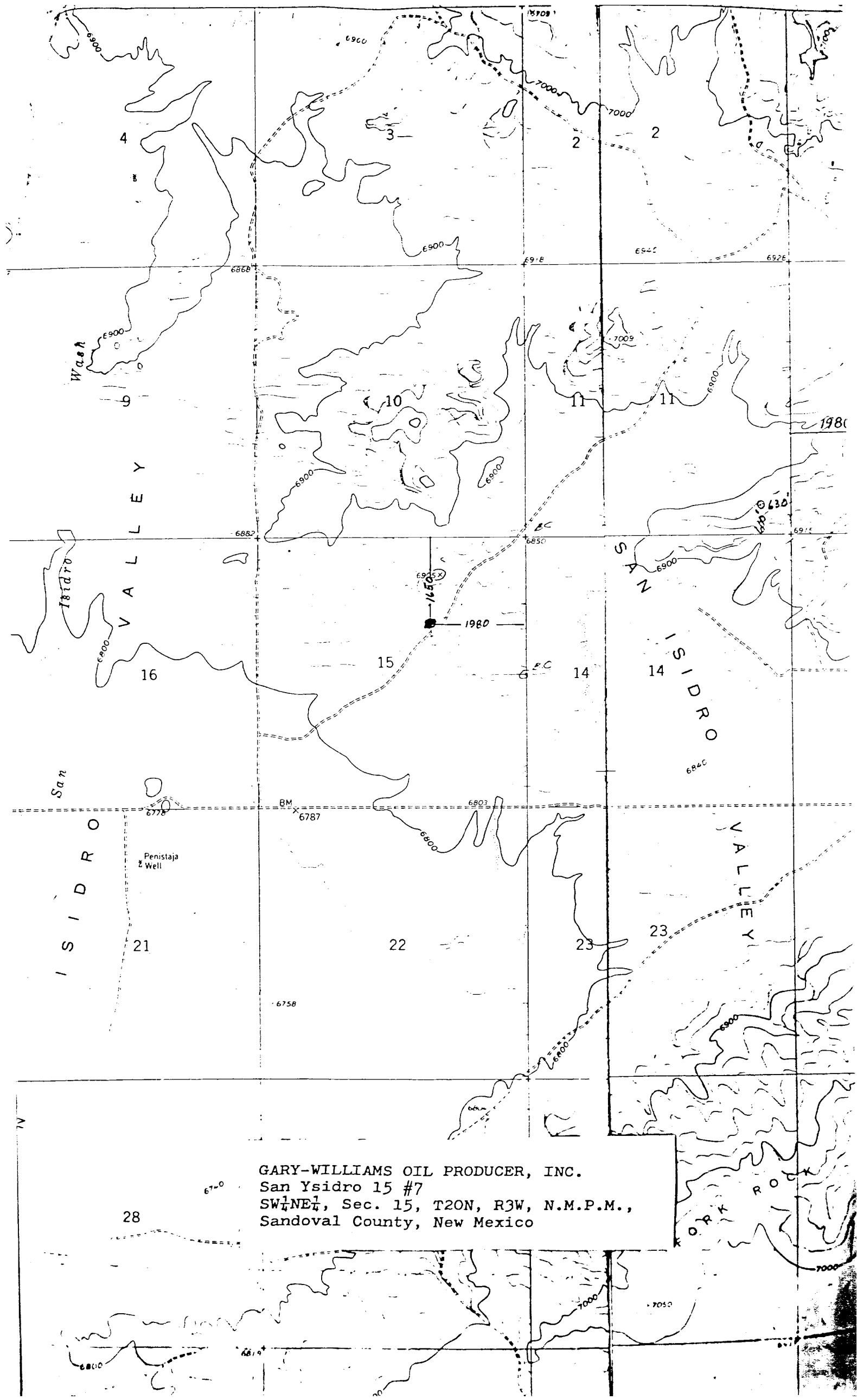
I hereby certify that the well location shown on this plat is plotted from field notes of actual surveys made by me or under my supervision and that the same is true and correct to the best of my knowledge and belief.

Date Surveyed  
**June 6, 1984**

Registered Professional Engineer and/or Land Surveyor

**Michael Daly**

Certificate No.  
**5992**



GARY-WILLIAMS OIL PRODUCER, INC.  
San Ysidro 15 #7  
SW $\frac{1}{4}$ NE $\frac{1}{4}$ , Sec. 15, T20N, R3W, N.M.P.M.,  
Sandoval County, New Mexico