

WELL LOCATION AND ACREAGE DEDICATION PLAT

Superseded Col
Effective 1-1-81

All distances must be from the outer boundaries of the Section.

| | | | | |
|----------------------------------|---------------|----------------------------------|-----------------|--------------------|
| GARY-WILLIAMS OIL PRODUCER, INC. | | Lease SAN YSIDRO 15 <i>HU</i> | | Well No. 7 |
| Lot Letter G | Section 15 | Township 20 NORTH | Range 3 WEST | County SANDOVAL |

Actual Footage Location of Wells

| | | | | | |
|---------------------------|-----------------------------------|----------|--------|-----------------------------------|-------|
| 1650 | feet from the NORTH | line and | 1980 | feet from the EAST | line |
| Sound Level Elev. 6835 | Producing Formation Rio Puerco | Pool | Mancos | Dedicated Acres 220 <i>640</i> | Acres |

1. Outline the acreage dedicated to the subject well by colored pencil or hatchure marks on the plat below.
2. If more than one lease is dedicated to the well, outline each and identify the ownership thereof (both as to working interest and royalty).
3. If more than one lease of different ownership is dedicated to the well, have the interests of all owners been consolidated by communitization, unitization, force-pooling, etc?

☐ Yes ☒ No If answer is "yes," type of consolidation *Unit*

If answer is "no," list the owners and tract descriptions which have actually been consolidated. (Use reverse side of this form if necessary.)

No allowable will be assigned to the well until all interests have been consolidated (by communitization, unitization, forced-pooling, or otherwise) or until a non-standard unit, eliminating such interests, has been approved by the Commission.

CERTIFICATION

I hereby certify that the information contained herein is true and complete to the best of my knowledge and belief.

Name
Ned Dollar

Position
Agent

Company
Gary-Williams Oil Prod. Co.

Date
June 11, 1984

I hereby certify that the well location shown on this plat is based on field notes of surveys made by me or under my supervision and that the same is true and correct to the best of my knowledge and belief.

Date Surveyed
June 6, 1984

Registered Professional Engineer
and/or Land Surveyor

Michael Daly

Certificate No.
5992

RECEIVED
SEP 10 1991
OIL CON. DIV.
DIST. 3

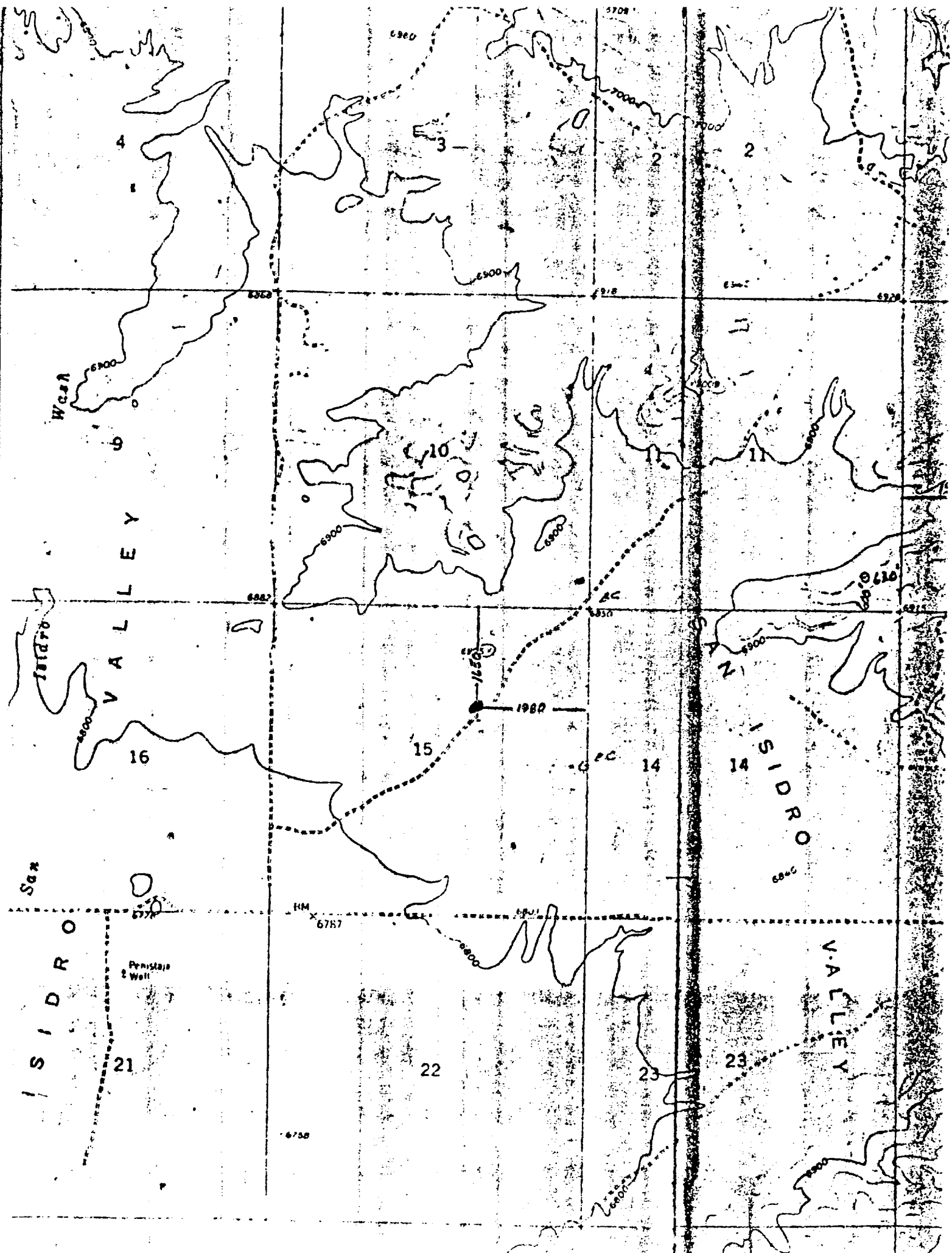
RECEIVED
JUN 14 1984
BUREAU OF LAND MANAGEMENT
FARMINGTON RESOURCE AREA

15

1650

1980

320 640 960 1280 1600 1920 2240 2560 2880 3200 3520 3840 4160 4480 4800 5120 5440 5760 6080 6400



VETERAN'S EXPLORATION, INC.

San Isidro 15-7A
Lease #NM-36936
Section 15-T20N-R3W
Sandoval County, NM

DRILLING PROGNOSIS

I. ESTIMATED TOPS OF IMPORTANT GEOLOGIC MARKERS (Assumes KB Elevation of 7030)

| <u>FORMATION</u> | <u>TVD</u> | <u>SUBSEA</u> |
|------------------|------------|---------------|
| Ojo Alamo | 317' | +6533' |
| Fruitland | 506' | +6344' |
| Pictured Cliffs | 790' | +6060' |
| Lewis | 932' | +5918' |
| Chacra | 1210' | +5640' |
| Cliff House | 1600' | +5250' |
| Menefee | 2220' | +4643' |
| Point Lookout | 2950' | +3900' |
| Mancos | 3075' | +3776' |
| Mancos "A" | 3858' | +2992' |
| Mancos "B" | 4028' | +2822' |
| Mancos "C" | 4072' | +2778' |
| Mancos "D" | 4197' | +2653' |

II. ESTIMATED DEPTHS OF ANTICIPATED WATER, OIL, GAS, OR MINERAL FORMATIONS

| <u>FORMATION</u> | <u>INTERVAL(TVD)</u> | <u>SUBSEA</u> |
|------------------|----------------------|---------------|
| Pictured Cliffs | 790-931' | Water |
| Menefee | 2220-2949' | Oil/Gas/Water |
| Point Lookout | 2950-3074' | Water |
| Mancos "A" - "D" | 3858' -TD | Oil/Gas |

III. PRESSURE CONTROL EQUIPMENT

TYPE 11' - Double Gate hydraulic with 11" annular BOP and 500 psi wellhead pressure, rotating BOP/stripper, equipped with choke manifold and 9-5/8" x 11" casing head. Upper and lower Kelly cocks as well as inside BOP will also be available.

Pressure Rating - All components to be rated to 3000 psi working pressure.

Testing Procedure - BOP and choke manifold will be installed and pressure tested utilizing test plug after, plug back and before starting kickoff of horizontal drilling operation, then checked daily for mechanical operating condition. Ram-type preventers and related pressure tested to the pressure of the stack assembly, or 70% of the internal yield of the surface casing, whichever is less. Annular preventer will be pressure tested to the pressure of the stack assembly, or 70% of the internal yield of the surface casing, whichever is less. Annular preventer will be pressure tested to 50% of rated working pressure upon installation. BOP and choke manifold pressure rating will exceed the maximum anticipated surface pressure. The choke manifold and BOP extension rods with handwheels will be located outside of the sub-structure. The hydraulic BOP closing unit will be located at least 25 feet from the wellhead. Exact locations and configurations will depend upon the particular rig contracted to drill this well.

IV. CASING AND CEMENTING PROGRAM

A) Casing Program (All New)

| <u>Hole Size</u> | <u>Casing Descrip.</u> | <u>Interval</u> | <u>Length</u> | <u>SF T</u> | <u>SF C</u> | <u>SF B</u> |
|------------------|------------------------|-----------------|---------------|-----------------|-----------------|-----------------|
| *13-1/2" | 9-5/8" Conductor | 0-200' KB | 200' | -- | -- | -- |
| *8-3/4" | 7" 23#,K-55, STC | 0-3385' | 3305' | -- | -- | -- |
| 6-1/4" | 4-1/2" 11.6#,K-55,LTC | 3200-7066' | 7066' | 3.52 | 3.81 | 2.88 |

B) Cementing Program

| <u>CASING/HOLE SIZE</u> | <u>CEMENT SLURRY</u> | <u>SX</u> | <u>PPG</u> | <u>YIELD</u> |
|-------------------------|--------------------------------|-----------|------------|--------------|
| 9-5/8"/13-1/2" | 65/35 Pozmix | 150 | -- | -- |
| 7"/8-3/4" | Lead: 65/35 Pozmix (936 cf) | 300 | -- | -- |
| | Tail: Class "B" (118 cf) | 100 | | |
| 4-1/2"/6-1/4" | N/A | | | |

* Existing Data Prior to Re-Entry.

NOTE:

San Isidro #15-7 Re-entry: 7 inch casing set at 3305'; 6 inch openhole from 3305' to TD of 4366'. Prior to kicking off at 3680' and building angle to horizontal, a 5 inch inflatable bridge plug will be set at 3830', followed by a 300 foot, 15#/gal. Class "G" cement plug (53 Sx.) from 3830' back up to 3530'. After cement plug has set up, will dress off plug to proposed kickoff point - 3680'. Will then run downhole motor with bent subs and proceed with kickoff.

V. DRILLING FLUIDS PROGRAM

| <u>INTERVAL</u> | <u>TYPE</u> | <u>WEIGHT (PPG)</u> | <u>VISCOSITY (SEC)</u> | <u>FLUID LOSS (CCS)</u> |
|-----------------|-------------|---------------------|------------------------|-------------------------|
| 3205-7066' | FOAM | 70 QUALITY FOAM | N/A | 14 |

Drilling mud inventory (including weight and lost circulation materials) will be stockpiled on location. Supplemental materials will be transported from local warehouses.

VI. EVALUATION PROGRAM

Logs: The horizontal portion of the hole may or may not be logged, depending on hole conditions.

DST'S: None anticipated

Coring: None Anticipated

Geologist/Mud Logger: A wellsite geologist will be present from a depth of 1000' to TD. A two-man mud logging unit, complete with hot-wire and chromatograph will be operation from 1000' to TD.

Evaluation program may change at the discretion of the wellsite geologist.

Stimulation: No stimulation has been formulated for this well at this time. The drillsite, as applied for, will be sufficient size to accommodate any activity.

Whether the well is completed as a dry hole or a producer, Well Completion and Recompletion Report and Log (Form 3160-K) will be submitted to the BLM District Office not later than thirty days after completion of operations, in accordance with 43 CFR 3164. Two copies of summaries, all logs, core description, core analyses, well test data, geologic

summaries, sample description, and all other surveys or data obtained and compiled during the drilling and completion operations will be filed with Form 3160-4.

VII. ABNORMAL CONDITIONS

No abnormal temperatures or pressures are anticipated.

VIII DRILLING ACTIVITY

| | |
|-------------------------------|----------------|
| Drilling Activity: | |
| Anticipated Commencement Date | August 1, 1991 |
| Drilling Days | +/- 30 Days |
| Completion Days | +/- 20 Days |

GREAT LAND DIRECTIONAL DRILLING, INC.
 ROCKY MOUNTAIN REGION
 P.O. BOX 9619
 CASPER, WY 82609
 (307) 472-3113 Fax 265-9006

DIRECTIONAL WELL PLAN for VETERAN EXPLORATION

Well.....: SAN ISIDRO #15-7A
 Field.....: RIO PUERCO

Prepared.: 07/03/91

Section at....: S,57.99,W
 KB elevation.: 0.00

Computation...: RADIUS OF CURVATURE
 Case ID.....: 157A

WELL PROFILE

| STATION IDENTIFICATION | MEAS DEPTH | INCLN ANGLE | VERT-DEPTHS BKB SUB-S | | SECT DIST | DIRECTION BEARING | REL-COORDINATES FROM-WELLHEAD | | DL/ 100 |
|---------------------------|---------------|----------------|--------------------------|------|--------------|----------------------|----------------------------------|--------|------------|
| KB | 0 | 0.00 | 0 | 0 | 0 | S 57.99 W | 0 N | 0 E | 0.0 |
| MANCOS "TOP" | 3075 | 0.00 | 3075 | 3075 | 0 | S 57.99 W | 0 N | 0 E | 0.0 |
| KOP BUILD 14.00/100 | 3672 | 0.00 | 3672 | 3672 | 0 | S 57.99 W | 0 N | 0 E | 0.0 |
| MANCOS " A " | 3867 | 27.30 | 3860 | 3860 | 46 | S 57.99 W | 24 S | 39 W | 14.0 |
| MANCOS " B " | 4108 | 60.93 | 4030 | 4030 | 210 | S 57.99 W | 112 S | 178 W | 14.0 |
| END OF 14.00 BUILD | 4280 | 85.03 | 4080 | 4080 | 374 | S 57.99 W | 198 S | 317 W | 14.0 |
| MANCOS " C " | 4280 | 85.03 | 4080 | 4080 | 374 | S 57.99 W | 198 S | 317 W | 14.0 |
| TD | 7066 | 85.03 | 4321 | 4321 | 3150 | S 57.99 W | 1670 S | 2671 W | 0.0 |

Great Land Directional Drilling, Inc.

<KB>0

VERTICAL SECTION VIEW

VETERAN EXPLORATION

SAN ISIDRO #15-7A

Section at: S 57.99 W

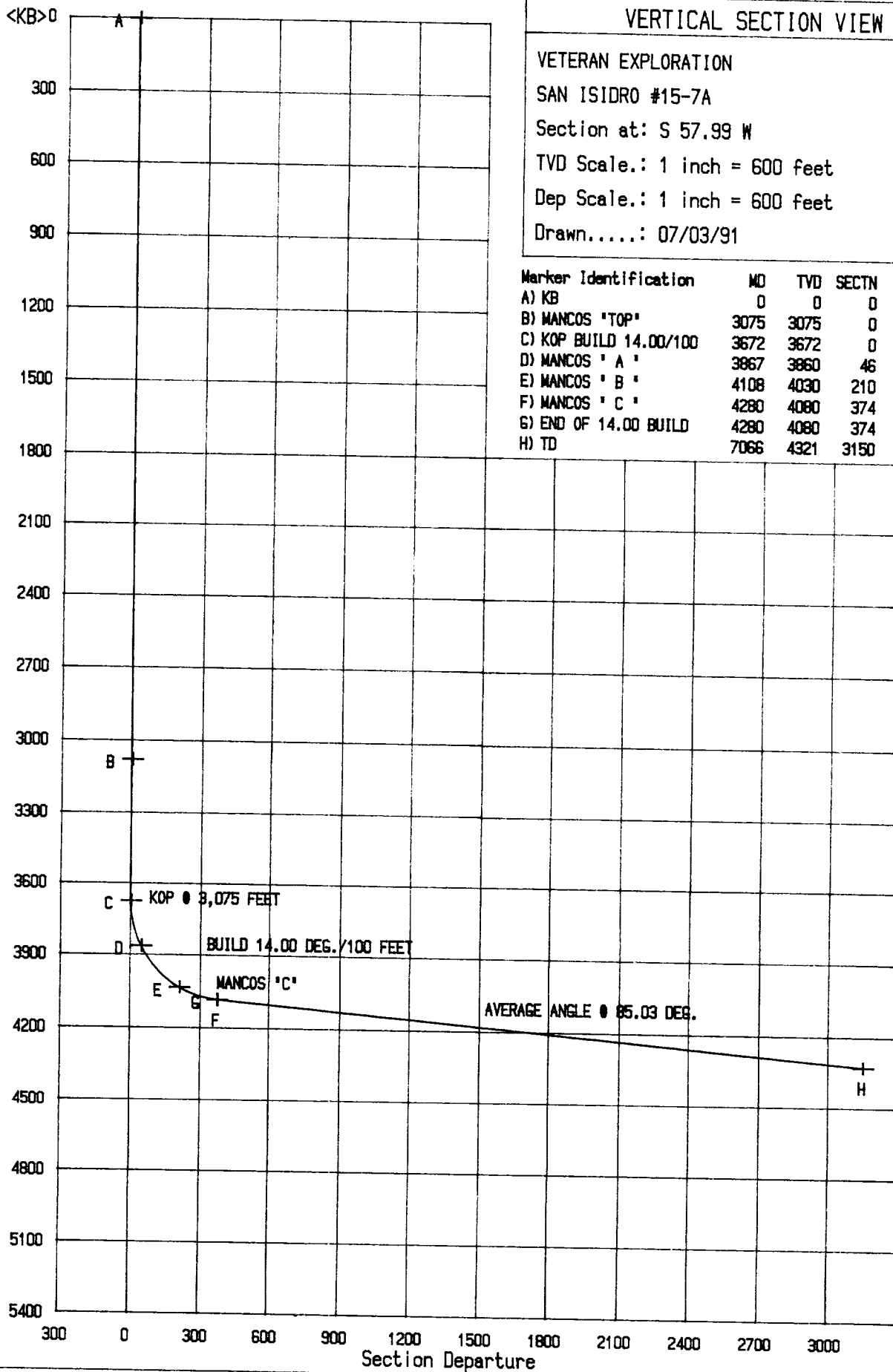
TVD Scale.: 1 inch = 600 feet

Dep Scale.: 1 inch = 600 feet

Drawn.....: 07/03/91

| Marker Identification | MD | TVD | SECTN | INCLN |
|------------------------|------|------|-------|-------|
| A) KB | 0 | 0 | 0 | 0.00 |
| B) MANCOS "TOP" | 3075 | 3075 | 0 | 0.00 |
| C) KOP BUILD 14.00/100 | 3672 | 3672 | 0 | 0.00 |
| D) MANCOS "A" | 3867 | 3860 | 46 | 27.30 |
| E) MANCOS "B" | 4108 | 4030 | 210 | 60.93 |
| F) MANCOS "C" | 4280 | 4080 | 374 | 85.03 |
| G) END OF 14.00 BUILD | 4280 | 4080 | 374 | 85.03 |
| H) TD | 7066 | 4321 | 3150 | 85.03 |

T
V
D



Great Land Directional Drilling, Inc.



| Marker Identification | MD | N/S | E/W |
|------------------------|------|--------|--------|
| A) KB | 0 | 0 N | 0 E |
| B) MANCOS "TOP" | 3075 | 0 N | 0 E |
| C) KOP BUILD 14.00/100 | 3672 | 0 N | 0 E |
| D) MANCOS "A" | 3867 | 24 S | 39 W |
| E) MANCOS "B" | 4108 | 112 S | 178 W |
| F) MANCOS "C" | 4280 | 198 S | 317 W |
| G) END OF 14.00 BUILD | 4280 | 198 S | 317 W |
| H) TD | 7066 | 1670 S | 2671 W |

PLAN VIEW

VETERAN EXPLORATION

SAN ISIDRO #15-7A

CLOSURE.....: 3150 ft S 57.99 W

DECLINATION.: 12.00 E

SCALE.....: 1 inch = 500 feet

DRAWN.....: 07/03/91

