

UNITED STATES  
DEPARTMENT OF THE INTERIOR  
BUREAU OF LAND MANAGEMENT

APPLICATION FOR PERMIT TO DRILL, DEEPEN, OR PLUG BACK

1a. TYPE OF WORK

DRILL ☒

DEEPEN ☐

PLUG BACK ☐

b. TYPE OF WELL

OIL  
WELL ☒

GAS  
WELL ☐

OTHER

SINGLE  
ZONE ☐

MULTIPLE  
ZONE ☐

2. NAME OF OPERATOR

Gary-Williams Oil Producer, Inc. c/o Ned Dollar (Agent)

3. ADDRESS OF OPERATOR

P. O. Box 890 Aztec, NM 87410

4. LOCATION OF WELL (Report location clearly and in accordance with any State requirements.)\*

AT SURFACE

660' FSL & 660' FEL Section 6, T20N., R2W.

At proposed prod. zone

14. DISTANCE IN MILES AND DIRECTION FROM NEAREST TOWN OR POST OFFICE\*

Approximately 2-1/2 miles south and 7 miles west of Cuba, NM

15. DISTANCE FROM PROPOSED

LOCATION TO NEAREST  
PROPERTY OR LEASE LINE, FT.  
(Also to nearest drlg. unit line, if any)

16. NO. OF ACRES IN LEASE

3,435.72

18. DISTANCE FROM PROPOSED LOCATION\*  
TO NEAREST WELL, DRILLING, COMPLETED,  
OR APPLIED FOR, ON THIS LEASE, FT.

19. PROPOSED DEPTH

4707'

17. NO. OF ACRES ASSIGNED  
TO THIS WELL

320

20. NOTARY OR CABLE TOOLS

Rotary

21. ELEVATIONS (Show whether DF, RT, GR, DRILLING OPERATIONS AUTHORIZED ARE

7091' GR SUBJECT TO COMPLIANCE WITH ATTACHED

22. APPROX. DATE WORK WILL START\*

Upon approval by BLM

23. "GENERAL REQUIREMENTS AND CEMENTING PROGRAM

This action is subject to administrative  
appeal pursuant to 30 CFR 290.

SIZE OF HOLE	SIZE OF CASING	WEIGHT PER FOOT	SETTING DEPTH	QUANTITY OF CEMENT
13-1/2"	9-5/8"	36# J-55	200'	Cement at surface
8-3/4"	7"	23# K-55	3827'	Determined by Caliper Log
6"	4-1/2"	10.50 J	4707'	5 sx cement

Drill 13-1/2" surface hole to 200'. Cmt. to surface. Drill 8-3/4" hole to 3827'. Cement thru Ojo Alamo. Run 23# K-55 LTC to TD. Cmt. w/approximate 1000' fill.

Surface to be drilled with 9# mud weight 40 viscosity to casing point. From casing point air-mist to TD.

IN ABOVE SPACE DESCRIBE PROPOSED PROGRAM: If proposal is to deepen or plug back, give data on present productive zone and proposed new productive zone. If proposal is to drill or deepen directionally, give pertinent data on subsurface locations and measured and true vertical depths. Give blowout preventer program, if any.

24.

SIGNED

*[Signature]*

TITLE

Agent

DATE

August 16, 1984

AS AMENDED

(This space for Federal or State office use)

PERMIT NO.

APPROVAL DATE

APPROVED BY

TITLE

CONDITIONS OF APPROVAL, IF ANY:

DATE

APPROVED BY

## OIL CONSERVATION DIVISION

STATE OF NEW MEXICO  
ENERGY AND MINERALS DEPARTMENTP. O. BOX 2008  
SANTA FE, NEW MEXICO 87501Form C-107  
Revised 10-1-7

All distances must be from the outer boundaries of the Section.

Operator <b>GARY-WILLIAMS OIL PRODUCER, INC.</b>		Lease <b>JOHNSON</b> <i>E</i>		Well No. <b>1616</b>
Unit Letter <b>P</b>	Section <b>6</b>	Township <b>20N</b>	Range <b>2W</b>	County <b>Sandoval</b>
Actual Footage Location of Well: <b>660</b> feet from the <b>South</b> line and <b>660</b> feet from the <b>East</b> line				
Ground Level Elev. <b>7091</b>	Producing Formation <b>Gallup</b>	Pool <b>Rio Pucaco</b>	Dedicated Acreage: <b>320</b> Acres	

1. Outline the acreage dedicated to the subject well by colored pencil or hatchure marks on the plat below.
2. If more than one lease is dedicated to the well, outline each and identify the ownership thereof (both as to working interest and royalty).
3. If more than one lease of different ownership is dedicated to the well, have the interests of all owners been consolidated by communitization, unitization, force-pooling, etc?

☐ Yes ☐ No If answer is "yes," type of consolidation \_\_\_\_\_

If answer is "no," list the owners and tract descriptions which have actually been consolidated. (Use reverse side of this form if necessary.) \_\_\_\_\_

No allowable will be assigned to the well until all interests have been consolidated (by communitization, unitization, forced-pooling, or otherwise) or until a non-standard unit, eliminating such interests, has been approved by the Commission.

OIL CON. DIV. DIST. 3		RECEIVED JUG 17 1984 BUREAU OF LAND MANAGEMENT WASHINGTON, D.C. 20250	
Sec.			
6			
660'		660'	

## CERTIFICATION

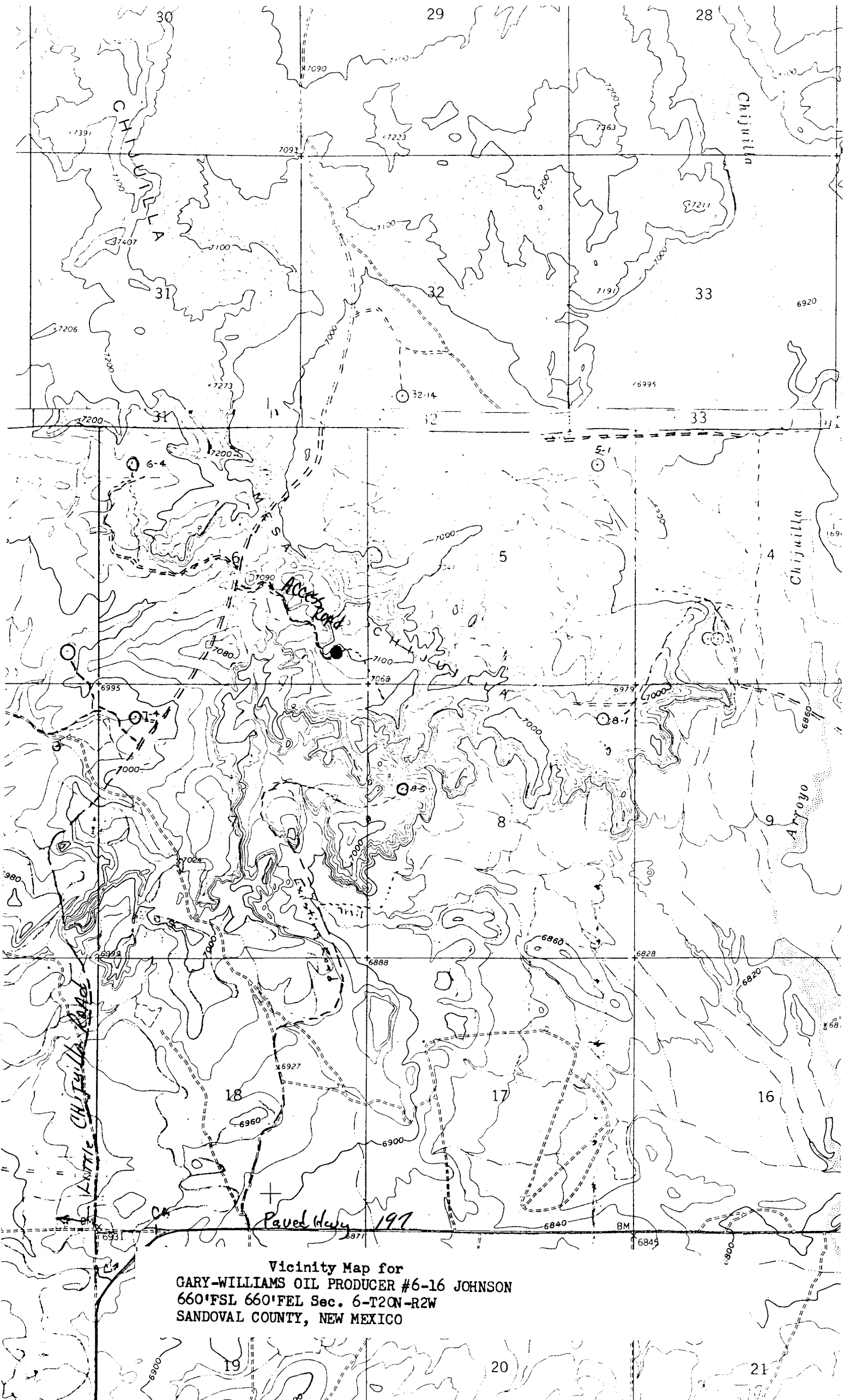
I hereby certify that the information contained herein is true and complete to the best of my knowledge and belief.

Name *W. J. Deller*  
Position *Agent*  
Company *Gary-Williams Oil Producer*  
Date *8-17-84*

I hereby certify that the well location shown on this plat was plotted from field notes of actual surveys made by me or under my supervision, and that the same is true and correct to the best of my knowledge and belief.

Date Surveyed *July 31, 1984*  
Registered Professional Engineer and Land Surveyor  
*Fred B. Kery Jr.*  
Certificate No. *4822*

Scale: 1"=1000'



Vicinity Map for  
GARY-WILLIAMS OIL PRODUCER #6-16 JOHNSON  
660' FSL 660' FEL Sec. 6-T2CN-R2W  
SANDOVAL COUNTY, NEW MEXICO