

30-013-20743

UNITED STATES
DEPARTMENT OF THE INTERIOR
BUREAU OF LAND MANAGEMENT

APPLICATION FOR PERMIT TO DRILL, DEEPEN, OR PLUG BACK

1a. TYPE OF WORK
 DRILL DEEPEN PLUG BACK

b. TYPE OF WELL
 OIL WELL GAS WELL OTHER
 SINGLE ZONE MULTIPLE ZONE

2. NAME OF OPERATOR
 Gary-Williams Oil Producer, Inc. c/o Ned Dollar, (Agent)

3. ADDRESS OF OPERATOR
 P. O. Box 399 Aztec, NM 87410

4. LOCATION OF WELL (Report location clearly and in accordance with any State requirements.*)
 At surface 660' FNL & 660' FEL Section 8, T20N., R2W.
 At proposed prod. zone

5. LEASE DESIGNATION AND SERIAL NO.
 NM-44453

6. IF INDIAN, ALLOTTEE OR TRIBE NAME

7. UNIT AGREEMENT NAME

8. FARM OR LEASE NAME
 Johnson 8

9. WELL NO.
 #1

10. FIELD AND POOL, OR WILDCAT
 Rio Puerco-Gallup ^{Maneros}

11. SEC., T., R., M., OR BLE.
 AND SURVEY OR AREA
 NENE Sec. 8, T20N-R2W

12. COUNTY OR PARISH
 Sandoval

13. STATE
 NM

14. DISTANCE IN MILES AND DIRECTION FROM NEAREST TOWN OR POST OFFICE*
 Approximately 3 miles south and 6 miles west of Cuba, NM

15. DISTANCE FROM PROPOSED* LOCATION TO NEAREST PROPERTY OR LEASE LINE, FT. (Also to nearest drlg. unit line, if any)

16. NO. OF ACRES IN LEASE
 3,435.72

17. NO. OF ACRES ASSIGNED TO THIS WELL
 320

18. DISTANCE FROM PROPOSED LOCATION* TO NEAREST WELL, DRILLING, COMPLETED, OR APPLIED FOR, ON THIS LEASE, FT.
 4371'

19. PROPOSED DEPTH
 4371'

20. ROTARY OR CABLE TOOLS
 Rotary

21. ELEVATIONS (Show whether DF, RT, GR, etc.)
 6976' GR

22. APPROX. DATE WORK WILL START*
 Upon approval by BLM

23. DRILLING OPERATIONS AUTHORIZED ARE SUBJECT TO COMPLIANCE WITH ATTACHED "GENERAL REQUIREMENTS" AND CEMENTING PROGRAM
 This action is subject to administrative appeal pursuant to 30 CFR 290.

SIZE OF HOLE	SIZE OF CASING	WEIGHT PER FOOT	SETTING DEPTH	QUANTITY OF CEMENT
13-1/2"	9-5/8"	36# J-55	200'	Cement to surface
8-3/4"	7"	23# K-55	3498'	Determined by Caliper Log
6"	4-1/2"	10.50 J	4371'	5 sx cement

Drill 13-1/2" surface hole to 200'. Cmt. to surface. Drill 8-3/4" hole to 3498'. Cement thru Ojo Alamo. Run 7" 23# K-55 LTC to TD. Cmt. w/approximate 1000' fill.

Surface to be drilled with 9# mud weight 40 viscosity to casing point. From casing point air-mist to TD.

RECEIVED

NOV 26 1984

OIL CON. DIV.
DIST. 3

IN ABOVE SPACE DESCRIBE PROPOSED PROGRAM: If proposal is to deepen or plug back, give data on present productive zone and proposed new productive zone. If proposal is to drill or deepen directionally, give pertinent data on subsurface locations and measured and true vertical depths. Give blowout preventer program, if any.

24. SIGNED Ned Dollar TITLE Agent

(This space for Federal or State office use)

PERMIT NO. _____ APPROVAL DATE _____

APPROVED BY _____ TITLE _____

CONDITIONS OF APPROVAL, IF ANY:

APPROVED
 August 16, 1984

AS AMENDED

OCT 23 1984

DATE [Signature]
 AREA MANAGER
 FARMINGTON RESOURCE AREA

*See Instructions On Reverse Side

All distances must be from the outer boundaries of the Section.

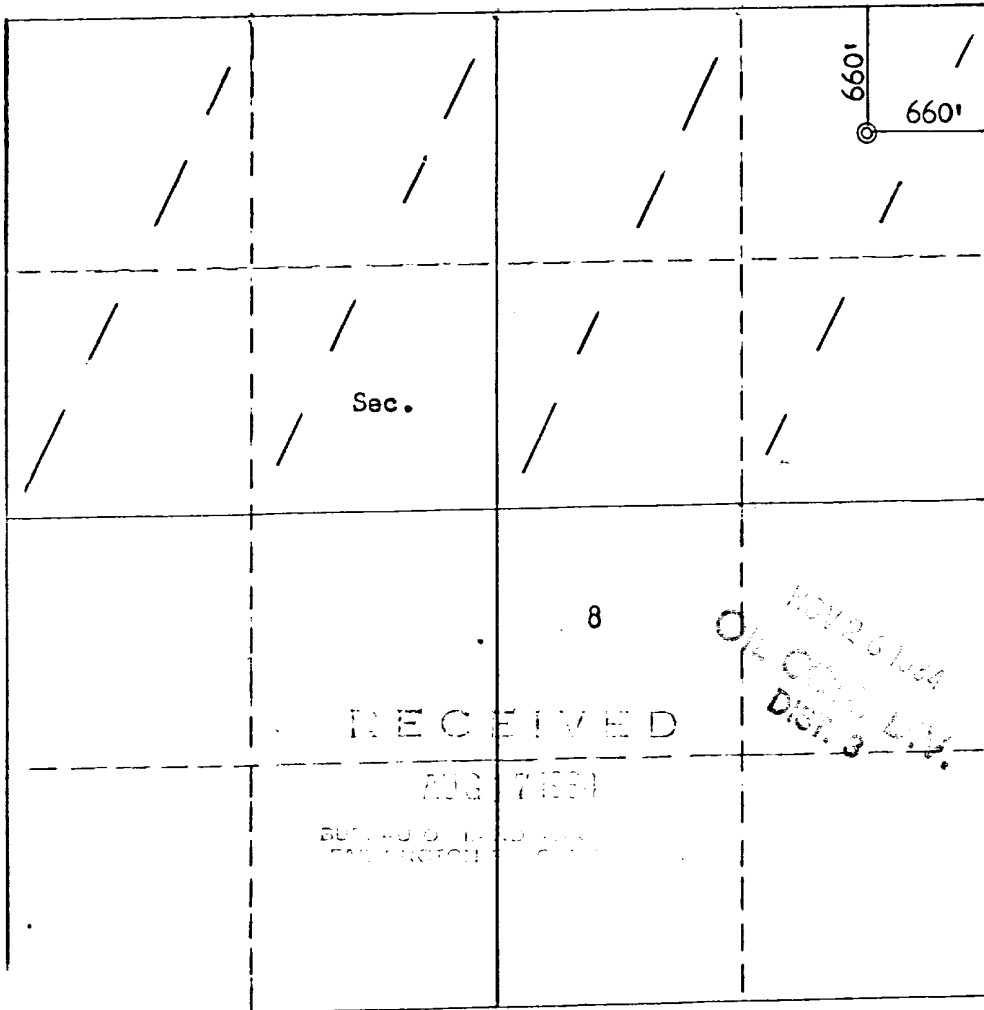
Operator GARY-WILLIAMS OIL PRODUCER, INC.		Lease JOHNSON 8		Well No. 1
Tract Letter A	Section 8	Township 20N	Range 2W	County Sandoval
Actual Footage Location of Well: 660 feet from the NORTH line and 660 feet from the EAST line				
Ground Level Elev. 6976	Producing Formation Gallup	Pool Rio Puerco	Dedicated Acreage: 320 Acres	

1. Outline the acreage dedicated to the subject well by colored pencil or hachure marks on the plat below.
2. If more than one lease is dedicated to the well, outline each and identify the ownership thereof (both as to working interest and royalty).
3. If more than one lease of different ownership is dedicated to the well, have the interests of all owners been consolidated by communitization, unitization, force-pooling, etc?

Yes No If answer is "yes," type of consolidation _____

If answer is "no," list the owners and tract descriptions which have actually been consolidated. (Use reverse side of this form if necessary.) _____

No allowable will be assigned to the well until all interests have been consolidated (by communitization, unitization, forced-pooling, or otherwise) or until a non-standard unit, eliminating such interests, has been approved by the Commission.



Scale: 1"=1000'

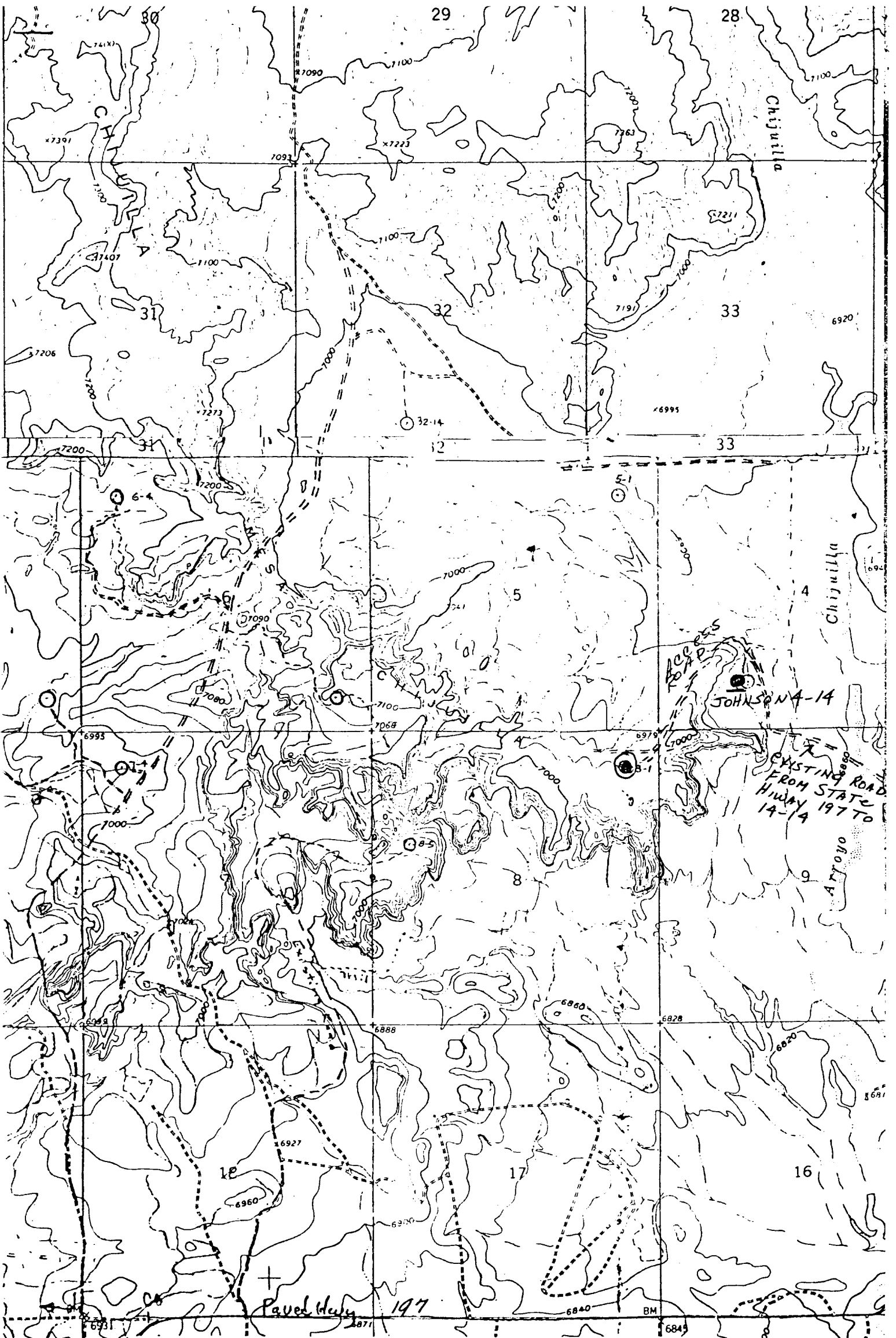
CERTIFICATION

I hereby certify that the information contained herein is true and complete to the best of my knowledge and belief.

Name
Fred Kerr
Position
Agent
Company
Gary-Williams Oil Producer
Date
8-17-84

I hereby certify that the well location shown on this plat was plotted from field notes of actual surveys made by me or under my supervision, and that the same is true and correct to the best of my knowledge and belief.

Date Surveyed
July 31, 1984
Registered Professional Engineer and Land Surveyor
Fred B. Kerr Jr.
Certificate No. *3950*



Vicinity Map for
 GARY-WILLIAMS OIL PRODUCER #8-1 JOHNSON
 660'PNL 660'FEL Sec. 8-T20N-R2W
 SANDOVAL COUNTY, NEW MEXICO