

UNITED STATES
DEPARTMENT OF THE INTERIOR
BUREAU OF LAND MANAGEMENT

APPLICATION FOR PERMIT TO DRILL, DEEPEN, OR PLUG BACK

1a. TYPE OF WORK

DRILL ☒

DEEPEN ☐

PLUG BACK ☐

b. TYPE OF WELL

OIL
WELL ☒

GAS
WELL ☐

OTHER

SINGLE
ZONE ☒

MULTIPLE
ZONE ☐

2. NAME OF OPERATOR

3. ADDRESS OF OPERATOR

4. LOCATION OF WELL (Report location clearly and in accordance with any State requirements.)

At surface

SESW (660' FSL & 1980' FWL)

At proposed prod. zone

14. DISTANCE IN MILES AND DIRECTION FROM NEAREST TOWN OR POST OFFICE*

13 miles Southeast from Cuba, New Mexico

16. DISTANCE FROM PROPOSED*

LOCATION TO NEAREST

PROPERTY OR LEASE LINE, FT.

(Also to nearest drg. unit line, if any)

660'

18. DISTANCE FROM PROPOSED LOCATION*

TO NEAREST WELL, DRILLING, COMPLETED,

OR APPLIED FOR, ON THIS LEASE, FT.

7920

10. PROPOSED DEPTH

5100'

20. ROTARY OR CABLE TOOL

0-1D Rotary

21. ELEVATIONS (Show whether DF, RT, GR, etc.)

6878' GR, 6889' KBSUBJECT TO COMPLIANCE WITH ATTACHED

DRILLING OPERATIONS AUTHORIZED ARE

23.

PROPOSED CASING AND CEMENTING PROGRAM

This action is subject to administrative

appeal pursuant to 30 CFR 290.

SIZE OF HOLE	SIZE OF CASING	WEIGHT PER FOOT	SETTING DEPTH
12 1/4"	9-5/8"	36#	500'
8-3/4"	7"	32#/26#	4100'

420 CF "B" w/1/4#/sx Flocele & 2% CaCl₂.
441 CF 50-50 Poz w/2% Gel, 6 1/4"/sx Gilsonite, 1/4#/sx Flocele & 190 CF "B" Neat w/1/4#/sx Flocele, 2% CaCl₂.
Open DV & cmt w/567 CF 50-50 Poz.

6-1/8" to 6-1/4" 4-1/2" 11.6# 5100' To be determined from Caliper log

Drill 12 1/4" hole to 500'. Set 9-5/8" casing and cement to surface. WOC 12 hours, test surface casing & BOP before drilling out. BOP to be operated each day after drilling out. Drill 8-3/4" hole to approximately 4100'. Set 7" casing and cement. WOC 24 hours. Air drill 6-1/8" or 6-1/4" hole to approximately 5100'. In the event of commercial production, 4 1/2" casing will be run and cemented to 500' above uppermost productive zone. All shows of oil/gas will be tested.

IN ABOVE SPACE DESCRIBE PROPOSED PROGRAM: If proposal is to deepen or plug back, give data on present productive zone and proposed new productive zone. If proposal is to drill or deepen directionally, give pertinent data on subsurface locations and measured and true vertical depths. Give blowout preventer program, if any.

24.

SIGNED

Ramona J. Rhoden

Sr. Engineering Aide

(This space for Federal or State office use)

PERMIT NO.

APPROVAL DATE

APPROVED BY

CONDITIONS OF APPROVAL, IF ANY:

APPROVED

AS AMENDED

DEC 14 1984

J. Stan McKee

ASST AREA MANAGER
FARMINGTON RESOURCE AREA

RECEIVED
DEC 18 1984
OIL CON. DIV.
DIST. 3

NMOCC

*See Instructions On Reverse Side

All distances must be from the outer boundaries of the Section.

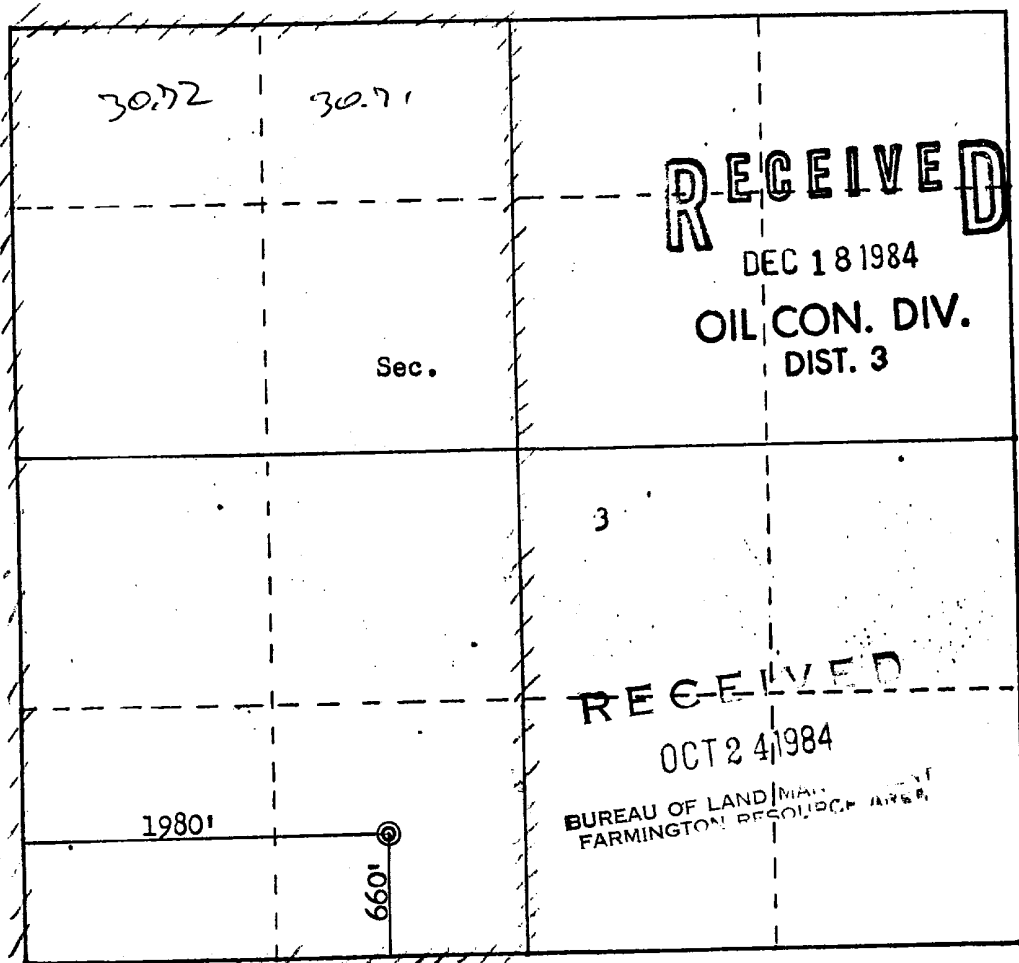
Operator CHAMPLIN PETROLEUM COMPANY			Lease FEDERAL 24-3		Well No. 3
Unit Letter N	Section 3	Township 20N	Range 3W	County Sandoval	
Actual Footage Location of Well: 660 feet from the South line and 1980 feet from the West line					
Ground Level Elev: 6878	Producing Formation Moncos-Gallup		Pool Rio Puerco		Dedicated Acreage: 320 W/2 301.43 Acres

1. Outline the acreage dedicated to the subject well by colored pencil or hachure marks on the plat below.
2. If more than one lease is dedicated to the well, outline each and identify the ownership thereof (both as to working interest and royalty).
3. If more than one lease of different ownership is dedicated to the well, have the interests of all owners been consolidated by communitization, unitization, force-pooling, etc?

☐ Yes ☐ No If answer is "yes," type of consolidation _____

If answer is "no," list the owners and tract descriptions which have actually been consolidated. (Use reverse side of this form if necessary.) _____

No allowable will be assigned to the well until all interests have been consolidated (by communitization, unitization, forced-pooling, or otherwise) or until a non-standard unit, eliminating such interests, has been approved by the Commission.



Scale: 1"=1000'

CERTIFICATION

I hereby certify that the information contained herein is true and complete to the best of my knowledge and belief.

Ramona J. Rhoden

Name

Sr. Engineering Aide

Position

Champlin Petroleum Company

Company

October 19, 1984

Date

Ramona J. Rhoden

I hereby certify that the well location shown on this plat was plotted from field notes of actual surveys made by me or under my supervision, and that the same is true and correct to the best of my knowledge and belief.

Date Surveyed

October 6, 1984

Registered Professional Engineer and Land Surveyor

Fred B. Kery Jr.

Certificate No. 2

3950

JOHNSON TRADING POST QUADRANGLE
NEW MEXICO-SANDOVAL CO.
7.5 MINUTE SERIES (TOPOGRAPHIC)

UNITED STATES
DEPARTMENT OF THE INTERIOR
GEOLOGICAL SURVEY

107°07'30"

309000m. E.

