

UNITED STATES  
DEPARTMENT OF THE INTERIOR  
BUREAU OF LAND MANAGEMENT

APPLICATION FOR PERMIT TO DRILL, DEEPEN, OR PLUG BACK

1a. TYPE OF WORK  
DRILL ☒ DEEPEN ☐ PLUG BACK ☐

b. TYPE OF WELL  
OIL WELL ☒ GAS WELL ☐ OTHER ☐  
SINGLE ZONE ☐ MULTIPLE ZONE ☐

2. NAME OF OPERATOR  
Gary-Williams Oil Producer, Inc. c/o Ned Dollar, Agent

3. ADDRESS OF OPERATOR  
P. O. Box 399 Aztec, NM 87410

4. LOCATION OF WELL (Report location clearly and in accordance with any State requirements.)\*  
At surface 1900' FNL & 2250' FEL Section 26, T20N., R3W.

At proposed prod. zone

14. DISTANCE IN MILES AND DIRECTION FROM NEAREST TOWN OR POST OFFICE\*  
Approximately 6 miles south and 9 miles west of Cuba, NM.

15. DISTANCE FROM PROPOSED\*  
LOCATION TO NEAREST  
PROPERTY OR LEASE LINE, FT.  
(Also to nearest drlg. unit line, if any)

16. NO. OF ACRES IN LEASE  
640

17. NO. OF ACRES ASSIGNED  
TO THIS WELL  
320

18. DISTANCE FROM PROPOSED LOCATION\*  
TO NEAREST WELL, DRILLING, COMPLETED,  
OR APPLIED FOR, ON THIS LEASE, FT.

19. PROPOSED DEPTH  
4457'

20. ROTARY OR CABLE TOOLS  
Rotary

21. ELEVATIONS (Show whether DF, RT, GR, etc.)  
6984' GR

22. APPROX. DATE WORK WILL START\*  
Upon approval by BLM

23. PROPOSED CASING AND CEMENTING PROGRAM

SIZE OF HOLE	SIZE OF CASING	WEIGHT PER FOOT	SETTING DEPTH	QUANTITY OF CEMENT
12-3/4"	9-5/8"	36# J-55	200'	Cement to surface
8-3/4"	7"	23# K-55	3390'	Determined by Caliper Log
6-1/4"	4-1/2"	10.5 J-55	4457'	5 sx Cement

Drill 12-3/4" surface hole to 200'. Cmt. to surface. Drill 8-3/4" hole to 3390'. Cement thru Ojo Alamo. Run 23# K-55 LTC to TD. Cmt. w/approximate 1000' fill.

Surface to be drilled with 9# mud weight 40 viscosity to casing point. From casing point air-mist to TD.

RECEIVED  
JAN 10 1985  
OIL CON. DIV.

RECEIVED  
NOV 21 1984  
BUREAU OF LAND MANAGEMENT  
FARMINGTON RESOURCE AREA

IN ABOVE SPACE DESCRIBE PROPOSED PROGRAM: If proposal is to deepen or plug back, give data on present productive zone and proposed new productive zone. If proposal is to drill or deepen directionally, give pertinent data on subsurface locations and measured and true vertical depths. Give blowout preventer program, if any.

24. SIGNED Ned Dollar TITLE Agent

(This space for Federal or State office use)

PERMIT NO. APPROVAL DATE

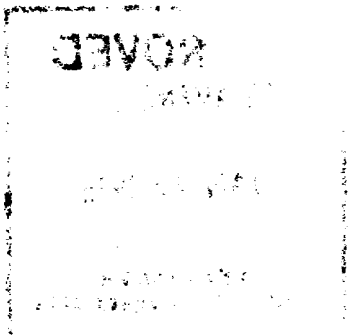
APPROVED BY  
CONDITIONS OF APPROVAL, IF ANY:

TITLE

APPROVED  
AS AMENDED  
JAN 08 1985  
/s/ J. Stan McKee  
AREA MANAGER  
FARMINGTON RESOURCE AREA

NMOCC

\*See Instructions On Reverse Side



## OIL CONSERVATION DIVISION

P. O. BOX 2088

SANTA FE, NEW MEXICO 87501

Form C-107  
Revised 10-1

STATE OF NEW MEXICO

ENERGY AND MINERALS DEPARTMENT

All distances must be from the outer boundaries of the Section.

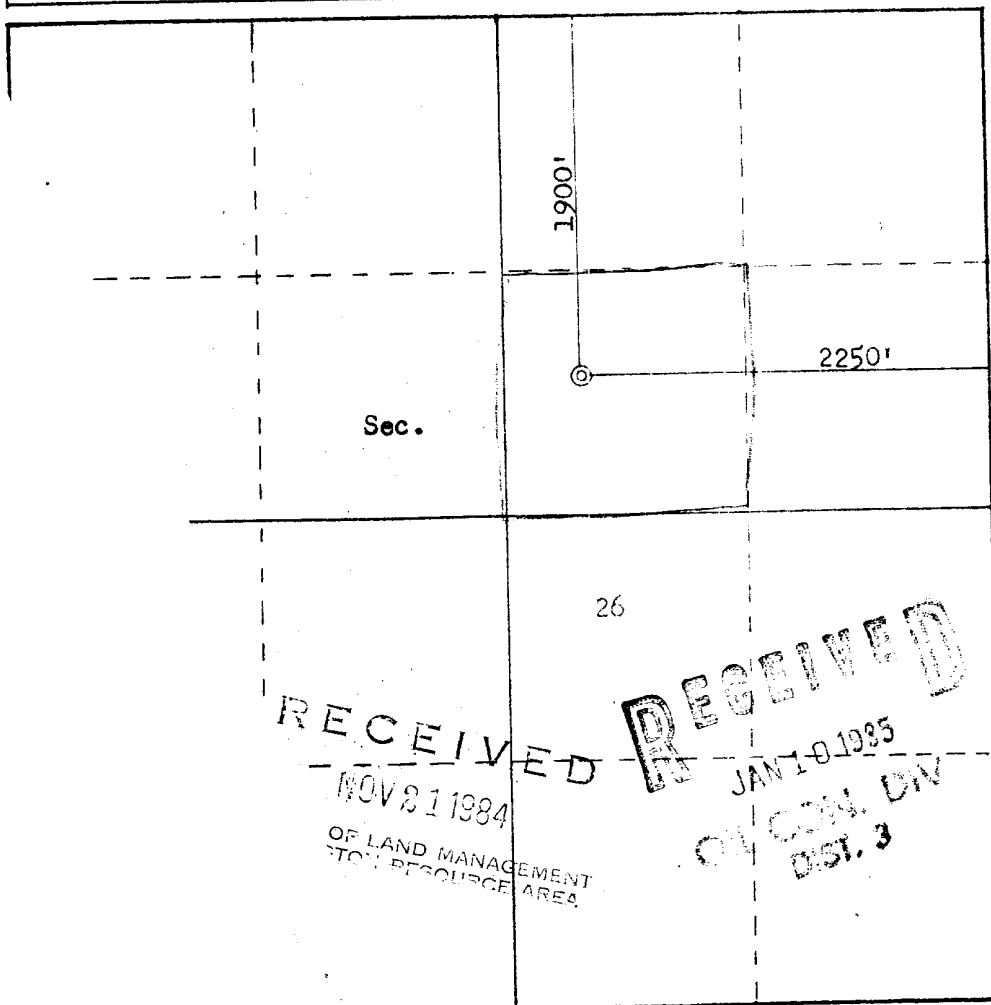
Operator <b>GARY-WILLIAMS OIL PRODUCER, INC.</b>			Lease <b>SAN ISIDRO</b>		Well No. <b>26-7</b>
Unit Letter <b>G</b>	Section <b>26</b>	Township <b>20N</b>	Range <b>3W</b>	County <b>Sandoval</b>	
Actual Footage Location of Well:					
<b>1900</b> feet from the <b>North</b> line and		<b>2250</b> feet from the <b>East</b> line			
Ground Level Elev. <b>6984</b>	Producing Formation <b>Gallup</b>	Pool <b>Undesignated</b>		Dedicated Acreage <b>320 40</b> Acres	

1. Outline the acreage dedicated to the subject well by colored pencil or hachure marks on the plat below.
2. If more than one lease is dedicated to the well, outline each and identify the ownership thereof (both as to working interest and royalty).
3. If more than one lease of different ownership is dedicated to the well, have the interests of all owners been consolidated by communitization, unitization, force-pooling, etc?

☐ Yes ☒ No If answer is "yes," type of consolidation \_\_\_\_\_

If answer is "no," list the owners and tract descriptions which have actually been consolidated. (Use reverse side of this form if necessary.) \_\_\_\_\_

No allowable will be assigned to the well until all interests have been consolidated (by communitization, unitization, forced-pooling, or otherwise) or until a non-standard unit, eliminating such interests, has been approved by the Commission.



Scale: 1"=1000'

## CERTIFICATION

I hereby certify that the information contained herein is true and complete to the best of my knowledge and belief.

*Ned Dollar*

Name

Ned Dollar

Position

Agent

Company

Gary-Williams Oil Prod.

Date

November 13, 1984

I hereby certify that the well location shown on this plat was plotted from field notes of actual surveys made by me or under my supervision, and that the same is true and correct to the best of my knowledge and belief.

Date Surveyed

November 1, 1984

Registered Professional Engineer and Land Surveyor

*Fred B. Kerr Jr.*  
Fred B. Kerr Jr.

Certificate No. 2, KERR, JR.

3950

