

UNITED STATES
DEPARTMENT OF THE INTERIOR
BUREAU OF LAND MANAGEMENT

APPLICATION FOR PERMIT TO DRILL, DEEPEN, OR PLUG BACK

1a. TYPE OF WORK

DRILL ☒

DEEPEN ☐

PLUG BACK ☐

b. TYPE OF WELL

OIL
WELL ☒

GAS
WELL ☐

OTHER

SINGLE
ZONE ☒

MULTIPLE
ZONE ☐

2. NAME OF OPERATOR

Champlin Petroleum Company

3. ADDRESS OF OPERATOR

P. O. Box 1257, Englewood, CO 80150

4. LOCATION OF WELL (Report location clearly and in accordance with any State requirements.)*

At surface

NENENE (490' FNL & 420' FEL)

At proposed prod. zone

BUREAU OF LAND MANAGEMENT
FARMINGTON RESOURCE AREA

14. DISTANCE IN MILES AND DIRECTION FROM NEAREST TOWN OR POST OFFICE*

Approximately 22 miles Southwest of Cuba, New Mexico

10. DISTANCE FROM PROPOSED*
LOCATION TO NEAREST
PROPERTY OR LEASE LINE, FT.
(Also to nearest drlg. unit line, if any)

420

16. NO. OF ACRES IN LEASE

600

17. NO. OF ACRES ASSIGNED
TO THIS WELL

40

18. DISTANCE FROM PROPOSED LOCATION*
TO NEAREST WELL, DRILLING, COMPLETED,
OR APPLIED FOR, ON THIS LEASE, FT.

N/A

19. PROPOSED DEPTH

2700

20. ROTARY OR CABLE TOOLS

0-TD Rotary

21. ELEVATIONS (Show whether DF, RT, GR, etc.)

6572' GR, 6584' KB (est.)

22. APPROX. DATE WORK WILL START*

Upon approval

23. PROPOSED CASING AND CEMENTING PROGRAM

This action is subject to administrative
appeal pursuant to 30 CFR 290.

SIZE OF HOLE	SIZE OF CASING	WEIGHT PER FOOT	SETTING DEPTH	QUANTITY OF CEMENT
12 1/4"	9-5/8"	36#	120'	115 CF Class B, 1/2#/sx Flocele, 2% CaCl ₂ .
8-3/4"	7"	32#/36#	1800'	To be determined from Caliper log plus 50% excess.
6-1/8 - 6 1/4"	4 1/2"	11.6#	2700'	To be determined from Caliper log plus 30% excess.

Drill 12 1/4" hole to 120'. Set 9-5/8" casing and cement to surface. WOC 12 hours. Test surface casing & BOP before drilling out. BOP to be operated each day after drilling out. Drill 8-3/4" hole to approximately 1800'. Set 7" casing and cement. WOC, 12 hours. Air drill 6-1/8" or 6-1/4" hole to approximately 2700'. In the event of commercial production, 4 1/2" casing will be run and cemented to 500' above uppermost productive zone. All shows of oil/gas will be tested.

RECEIVED

MAR 26 1985

OIL CON. DIV.

IN ABOVE SPACE DESCRIBE PROPOSED PROGRAM: If proposal is to deepen or plug back, give data on present productive zone and proposed new productive zone. If proposal is to drill or deepen directionally, give pertinent data on subsurface locations and measured and vertical depths. Give blowout preventer program, if any.

24. SIGNED Ramona J. Rhodes TITLE Sr. Engineering Aide
(This space for Federal or State office use)

PERMIT NO. _____ APPROVAL DATE _____

APPROVED BY _____ TITLE _____
CONDITIONS OF APPROVAL, IF ANY:

NMOCC

*See Instructions On Reverse Side

Title 18 U.S.C. Section 1001, makes it a crime for any person knowingly and willfully to make to any department or agency of the United States any false, fictitious or fraudulent statements or representations as to any matter within its jurisdiction.

OIL CONSERVATION DIVISION

P. O. BOX 2088

SANTA FE, NEW MEXICO 87501

Form C-107
Revised 10-1-78

STATE OF NEW MEXICO

OIL AND MINERALS DEPARTMENT

All distances must be from the outer boundaries of the Section.

Operator CHAMPLIN PETROLEUM COMPANY			Lease FEDERAL 4-20 NM-24442		Well No. 1
Unit Letter A	Section 20	Township 18N	Range 3W	County Sandoval	
Actual Footage Location of Well: 490 feet from the North line and 420 feet from the East line					
Ground Level Elev: 6572	Producing Formation Fractured Mancos		Pool	Dedicated Acreage 40 Acres	

- Outline the acreage dedicated to the subject well by colored pencil or hatchure marks on the plat below.
- If more than one lease is dedicated to the well, outline each and identify the ownership thereof (both as to working interest and royalty). **N/A**
- If more than one lease of different ownership is dedicated to the well, have the interests of all owners been consolidated by communitization, unitization, force-pooling, etc?
☐ Yes ☐ No If answer is "yes," type of consolidation _____

If answer is "no," list the owners and tract descriptions which have actually been consolidated. (Use reverse side of this form if necessary.) _____

No allowable will be assigned to the well until all interests have been consolidated (by communitization, unitization, forced-pooling, or otherwise) or until a non-standard unit, eliminating such interests, has been approved by the Commission.

Sec.	20
RECEIVED MAR 26 1985 OIL CON. DIV. DIST. 3	RECEIVED FEB 28 1985 BUREAU OF LAND MANAGEMENT FARMINGTON RESOURCE AREA

Scale: 1"=1000'

CERTIFICATION

I hereby certify that the information contained herein is true and complete to the best of my knowledge and belief.

Ramona J. Rhoden
Name

Ramona J. Rhoden
Position

Sr. Engineering Aide
Company

Champlin Petroleum Company
Date

February 11, 1985

I hereby certify that the well location shown on this plat was plotted from field notes of actual surveys made by me or under my supervision, and that the same is true and correct to the best of my knowledge and belief.

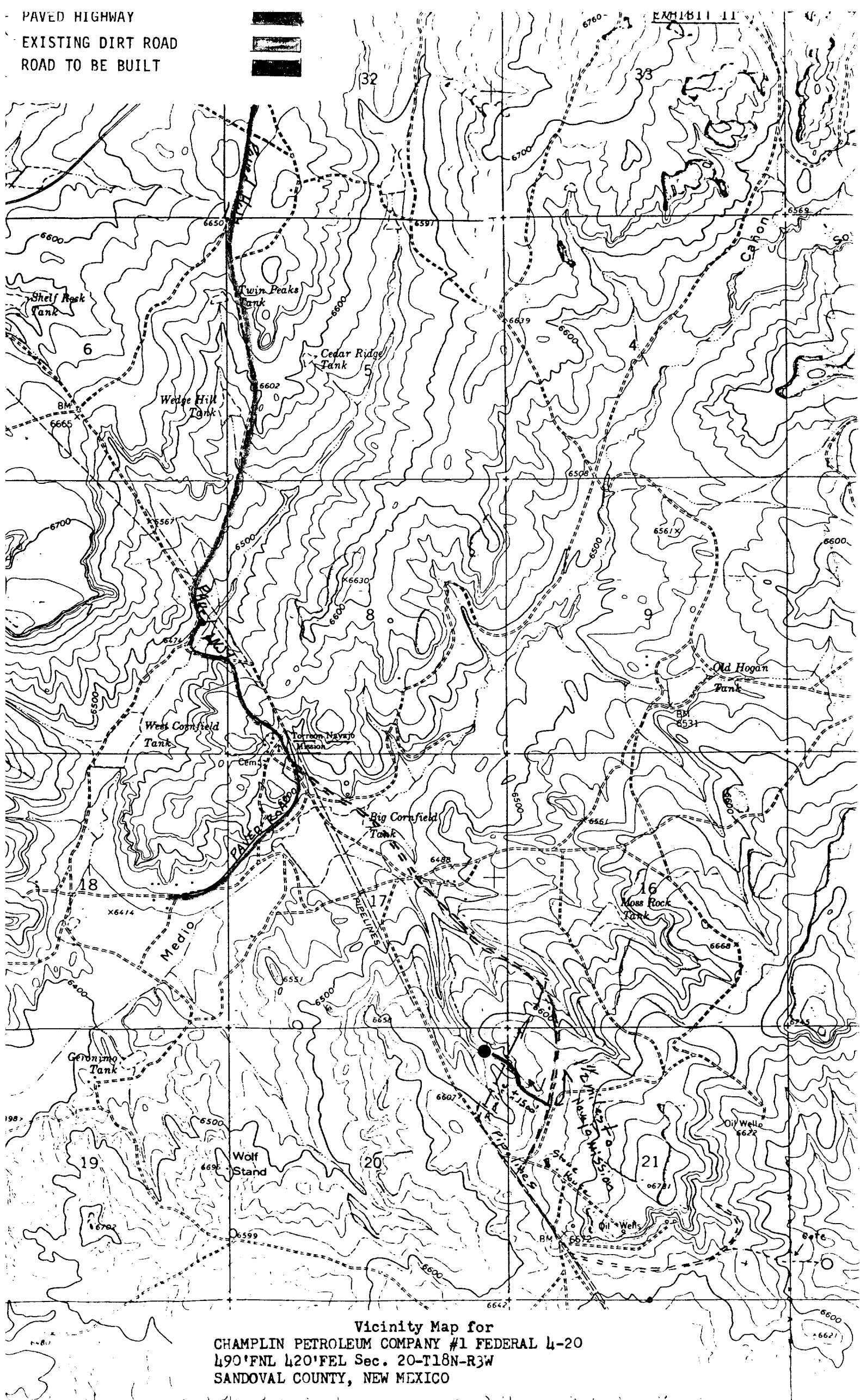
Date Surveyed
January 15, 1985

Registered Professional Engineer and Land Surveyor

Fred E. Kerr Jr.
Fred E. Kerr Jr.

Certificate No. **2, KEER, M.**
1950

PAVED HIGHWAY
 EXISTING DIRT ROAD
 ROAD TO BE BUILT



Vicinity Map for
 CHAMPLIN PETROLEUM COMPANY #1 FEDERAL 4-20
 490'FNL 420'FEL Sec. 20-T18N-R3W
 SANDOVAL COUNTY, NEW MEXICO