

UNITED STATES  
DEPARTMENT OF THE INTERIOR  
BUREAU OF LAND MANAGEMENT

SUBMIT IN TRIPLICATE\*  
(Other instructions on  
reverse side)

Form approved.  
Budget Bureau No. 1004-0136  
Expires August 31, 1985

APPLICATION FOR PERMIT TO DRILL, DEEPEN, OR PLUG BACK

1. TYPE OF WORK

DRILL ☒

DEEPEN ☐

PLUG BACK ☐

2. TYPE OF WELL

OIL  
WELL ☒

GAS  
WELL ☐

OTHER ☐

SINGLE  
ZONE ☐

MULTIPLE  
ZONE ☐

3. NAME OF OPERATOR

Gary-Williams Oil Producer, Inc. c/o Ned Dollar, Agent

4. ADDRESS OF OPERATOR

P. O. Box 399 Aztec, NM 87410

5. LOCATION OF WELL (Report location clearly and in accordance with any State requirements.)

At surface 790' FSL & 870' FWL Section 6, T21N., R4W.

At proposed prod. zone

6. DISTANCE IN MILES AND DIRECTION FROM NEAREST TOWN OR POST OFFICE

Approximately 19 miles SE of Counselors, NM.

7. DISTANCE FROM PROPOSED\*

LOCATION TO NEAREST  
PROPERTY OR LEASE LINE, FT.  
(Also to nearest drlg. unit line, if any.)

8. DISTANCE FROM PROPOSED LOCATION\*  
TO NEAREST WELL, DRILLING COMPLETED,  
OR APPLIED FOR, ON THIS LEASE, FT.

9. ELEVATIONS (Show whether DF, RT, GR, etc.)

7061' GR

DRILLING OPERATIONS AUTHORIZED ARE  
SUBJECT TO COMPLIANCE WITH ATTACHED  
"GENERAL REQUIREMENTS".

10. PROPOSED CASING AND CEMENTING PROGRAM

SIZE OF HOLE	SIZE OF CASING	WEIGHT PER FOOT	SETTING DEPTH
13-1/2"	9-5/8" 8 3/8	36# J-55	200'
6"	4-1/2"	10.50 J-55	2330'

11. LEASE DESIGNATION AND SERIAL NO.

NM-24450

12. IF INDIAN, ALLOTTEE OR TRIBE NAME

13. UNIT AGREEMENT NAME

14. FARM OR LEASE NAME

Ceja Pelon 6

15. WELL NO.

#13

16. FIELD AND POOL, OR WILDCAT

W.C. Chacra

17. SEC., T., R., M., OR BLK.  
AND SURVEY OR AREA

M Section 6, T21N-R4W.

18. COUNTY OR PARISH

Sandoval

19. STATE

NM

20. NO. OF ACRES ASSIGNED  
TO THIS WELL

40.147

21. ROTARY OR CABLE TOOLS

Rotary

22. APPROX. DATE WORK WILL START\*

April 1, 1985

This action is subject to administrative  
appeal pursuant to 30 CFR 290.

Cement to surface  
Cement from TD to 200'.

Well will be drilled with 9# mud. 50/50 Poz Class B, 2% Gel, 7# salt persack with 6 1/4# Flocele, 4% Gelsonite, 6/10 of Harrid #9. 2% calcium chloride. If lost circulation problems occur, Class B cement type Sperlite 3/10 of FDRC 344, 3/10 of HR-4 and 5/10 of econolite tail on w/Class B.

RECEIVED  
MAR 22 1985  
OIL CON. DIV.  
DIST. 3

1. IN ABOVE SPACE DESCRIBE PROPOSED PROGRAM: If proposal is to deepen or plug back, give data on present productive zone and proposed new productive zone. If proposal is to drill or deepen directionally, give pertinent data on subsurface locations and measured and true vertical depths. Give blowout prevention program, if any.

2. SIGNED Ned Dollar TITLE Agent

(This space for Federal or State office use)

PERMIT NO.

APPROVAL DATE

APPROVED BY

TITLE

CONDITIONS OF APPROVAL, IF ANY

NMOCC

\*See Instructions On Reverse Side

APPROVED  
DATE MAR 21, 1985  
AS AMENDED  
MAR 21 1985  
AREA MANAGER  
FARMINGTON RESOURCE AREA

Title 18 U.S.C. Section 1001, makes it a crime for any person knowingly and willfully to make to any department or agency of the United States any false statement, or to furnish any false information.

NEW MEXICO OIL CONSERVATION COMMISSION  
WELL LOCATION AND ACREAGE DEDICATION PLAT

Form C-102  
Supersedes C-128  
Effective 1-1-65

All distances must be from the outer boundaries of the Section

Operator <b>GARY-WILLIAMS OIL PRODUCER, INC</b>			Lease <b>CEJA PELON 13</b>		Well No. <b>6-28</b>
Unit Letter <b>M</b>	Section <b>6</b>	Township <b>21N</b>	Range <b>4W</b>	County <b>Sandoval</b>	
Actual Footage Location of Well: <b>790</b> feet from the <b>South</b> line and <b>870</b> feet from the <b>West</b> line					
Ground Level Elev. <b>7061</b>	Producing Formation <b>Chacra</b>		Pool <b>W.C.</b>		Dedicated Acreage: <b>40.47</b> Acres

1. Outline the acreage dedicated to the subject well by colored pencil or hachure marks on the plat below.
2. If more than one lease is dedicated to the well, outline each and identify the ownership thereof (both as to working interest and royalty).
3. If more than one lease of different ownership is dedicated to the well, have the interests of all owners been consolidated by communitization, unitization, force-pooling, etc?

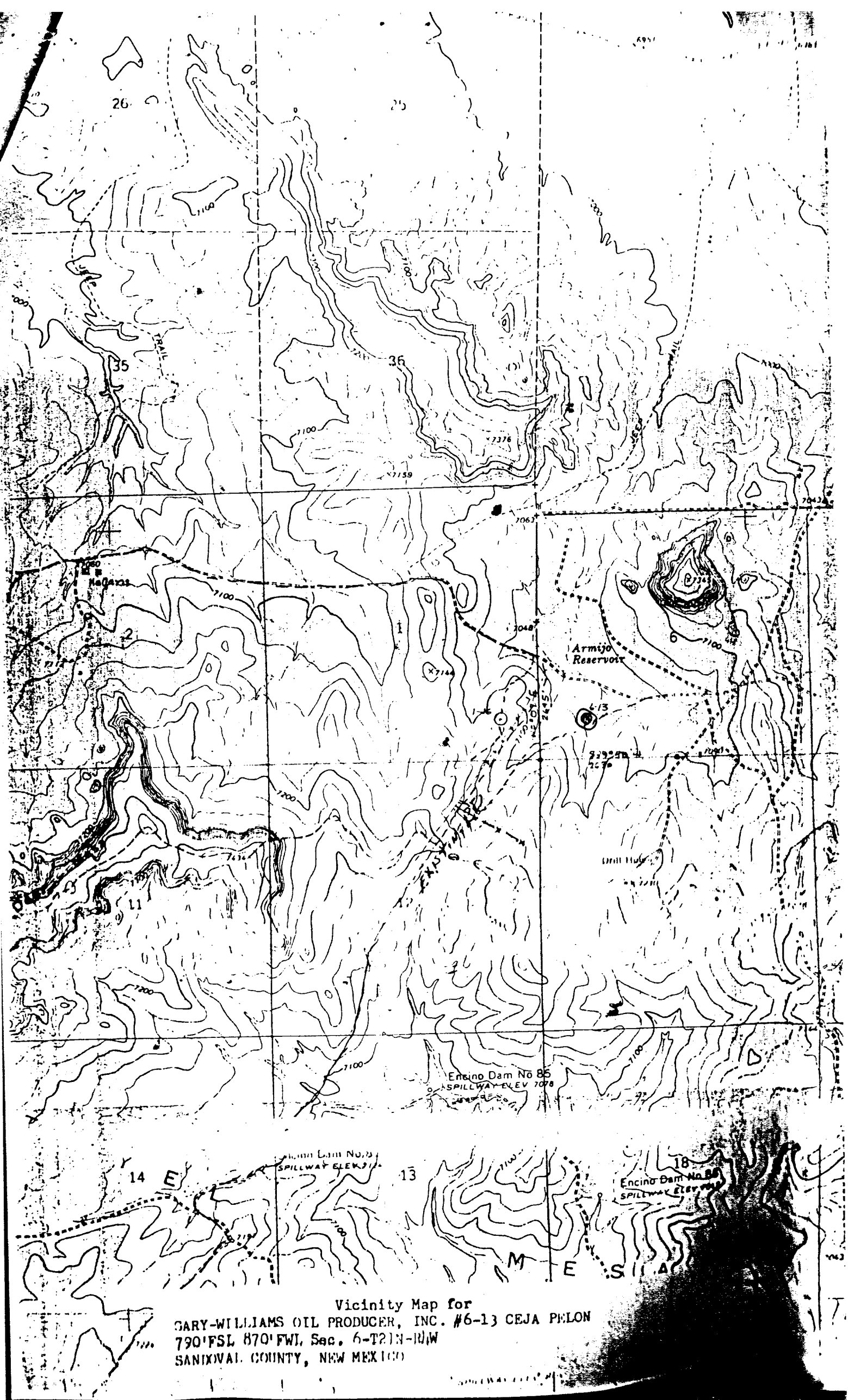
☐ Yes ☒ No If answer is "yes," type of consolidation \_\_\_\_\_

If answer is "no," list the owners and tract descriptions which have actually been consolidated. (Use reverse side of this form if necessary.) \_\_\_\_\_

No allowable will be assigned to the well until all interests have been consolidated (by communitization, unitization, forced-pooling, or otherwise) or until a non-standard unit, eliminating such interests, has been approved by the Commission.

		<p><b>RECEIVED</b> MAR 22 1985 OIL CON. DIV. DIST. 3</p>
		<p><b>6 RECEIVED</b> MAR 13 1985 BUREAU OF LAND MANAGEMENT FARMINGTON RESOURCE AREA</p>

CERTIFICATION	
I hereby certify that the information contained herein is true and complete to the best of my knowledge and belief.	
Name	<b>Ned Dollar</b>
Position	<b>Agent</b>
Company	<b>Gary-Williams Oil Prod.</b>
Date	<b>3-12-85</b>
I hereby certify that the well location shown on this plat was plotted from field notes of actual surveys made by me or under my supervision, and that the same is true and correct to the best of my knowledge and belief.	
Date Surveyed	<b>March 9, 1985</b>
Registered Professional Engineer and Land Surveyor	
<b>Fred B. Kerr Jr.</b>	
Certificate No. _____	



Vicinity Map for  
GARY-WILLIAMS OIL PRODUCER, INC. #6-13 CEJA PELON  
790'FSL 870'FWL Sec. 6-T21N-R1W  
SAN XAVIER COUNTY, NEW MEXICO