

UNITED STATES  
DEPARTMENT OF THE INTERIOR  
GEOLOGICAL SURVEY30-043-20754  
5. LEASE DESIGNATION AND SERIAL NO.

Cont. 429

6. IF INDIAN, ALLOTTEE OR TRIBE NAME

Jicarilla

7. UNIT AGREEMENT NAME

8. FARM OR LEASE NAME

Jicarilla 429

9. WELL NO.

4

10. FIELD AND POOL, OR WILDCAT

Undes. Dakota

11. SEC., T., R., M., OR BLK.  
AND SURVEY OR AREA

Sec. 24, T23N, R5W

12. COUNTY OR PARISH

Sandoval

13. STATE

New Mex.

## APPLICATION FOR PERMIT TO DRILL, DEEPEN, OR PLUG BACK

1a. TYPE OF WORK

DRILL ☒DEEPEN ☐PLUG BACK ☐

b. TYPE OF WELL

OIL  
WELL ☒GAS  
WELL ☐

OTHER

SINGLE  
ZONE ☐MULTIPLE  
ZONE ☐

2. NAME OF OPERATOR

Merrion Oil &amp; Gas Corporation

3. ADDRESS OF OPERATOR

P. O. Box 1017, Farmington, New Mexico

4. LOCATION OF WELL (Report location clearly and in accordance with any State requirements.)  
At surface 1850' FSL and 790' FEL

At proposed prod. zone

Same

14. DISTANCE IN MILES AND DIRECTION FROM NEAREST TOWN OR POST OFFICE\*

15. DISTANCE FROM PROPOSED\*

LOCATION TO NEAREST  
PROPERTY OR LEASE LINE, FT.  
(Also to nearest drg. unit line, if any)

790

16. NO. OF ACRES IN LEASE

19. PROPOSED DEPTH

6930

17. NO. OF ACRES ASSIGNED  
TO THIS WELL

40

18. DISTANCE FROM PROPOSED LOCATION\*  
TO NEAREST WELL, DRILLING, COMPLETED,  
OR APPLIED FOR, ON THIS LEASE, FT.

2640

20. ROTARY OR CABLE TOOLS

Rotary

21. ELEVATIONS (Show whether DF, RT, GR, etc.)

6922' GL

DRILLING OPERATIONS AT PROPOSED WELL ARE  
SUBJECT TO COMPLIANCE WITH ATTACHED

"GENERAL REQUIREMENTS"

PROPOSED CASING AND CEMENTING PROGRAM

22. APPROX. DATE WORK WILL START\*

Winter/1985 (Jan-Feb)

23.

This action is subject to administrative  
appeal pursuant to 30 CFR 290.

SIZE OF HOLE	SIZE OF CASING	WEIGHT PER FOOT	SETTING DEPTH	QUANTITY OF CEMENT
12-1/4"	8-5/8"	24 #/ft.	200 ft.	175 sx (361 cu. ft.)
7-7/8"	4-1/2"	10.5 #/ft.	6930 ft.	1200 sx

Will drill 12-1/4" surface hole to 200 ft. and set 200 ft. of 8-5/8" 24-#/ft. J-55 grade casing with 175 sx Class B cement with 3% CaCl<sub>2</sub>. Will drill 7-7/8" hole to 6930 ft. Will run open hole logs. No other testing planned. If well appears productive, will run 6930 ft. of 4-1/2", 10.5 #/ft. J-55 grade casing and stage cement. First stage will cement with 450 sx Class H 2% gel (1.22 cu. ft/sk. yield) 549 cu. ft. cement to cover Gallup interval from TD. Estimated top of cement is 5000 ft. Will set stage collar at app. 4671', below Pt. Lookout Formation. Second stage will cement with 700 sx Class B 2% D-79 (2.06 cu/ft/sk) 1442 cu. ft. cement. Followed by 50 sx Class H 2% gel (1.22 cu. ft/sk. yield) 61 cu. ft. to cover Mesaverde, Chacra, Pictured Cliffs, Fruitland and Ojo Alamo. Top of cement will be at surface.

Drilling circulating medium will be low solids, non-dispersed, low water loss mud using bentonite, starch, CMC and fresh water.

Minimum specifications for pressure control is 10" 900 series double ram blow out preventer. Will perforate and stimulate as required for completion.

IN ABOVE SPACE DESCRIBE PROPOSED PROGRAM: If proposal is to deepen or plug back, give data on present productive zone and proposed new productive zone. If proposal is to drill or deepen directionally, give pertinent data on subsurface locations and measured and true vertical depths. Give blowout preventer program, if any.

24.

SIGNED

TITLE

Operations Manager

-1/5/85

(This space for Federal or State office use)

PERMIT NO.

APPROVAL DATE

MAR 22 1985

APPROVED BY

CONDITIONS OF APPROVAL, IF ANY:

OIL CON. DIV.

DIST. 3  
NMCC

## OIL CONSERVATION DIVISION

STATE OF NEW MEXICO  
ENERGY AND MINERALS DEPARTMENTP. O. BOX 2048  
SANTA FE, NEW MEXICO 87501Form C-107  
Revised 10-1-77

All distances must be from the outer boundaries of the Section.


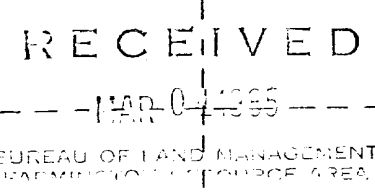
Operator <b>MERRION OIL &amp; GAS CORPORATION</b>			Lease <b>JICARILLA 429</b>		Well No. <b>4</b>
Unit Letter <b>I</b>	Section <b>24</b>	Township <b>23N</b>	Range <b>5W</b>	County <b>Sandoval</b>	
Actual Footage Location of Well: <b>1350</b> from the <b>South</b> line and <b>790</b> feet from the <b>East</b> line					
Ground Level Elev. <b>6922</b>	Producing Formation <b>Dakota</b>		Pool <b>Undes. Dakota</b>		Dedicated Acreage: <b>40</b> Acres

1. Outline the acreage dedicated to the subject well by colored pencil or hatchure marks on the plat below.
2. If more than one lease is dedicated to the well, outline each and identify the ownership thereof (both as to working interest and royalty).
3. If more than one lease of different ownership is dedicated to the well, have the interests of all owners been consolidated by communitization, unitization, force-pooling, etc?

☐ Yes ☐ No If answer is "yes," type of consolidation \_\_\_\_\_

If answer is "no," list the owners and tract descriptions which have actually been consolidated. (Use reverse side of this form if necessary.) \_\_\_\_\_

No allowable will be assigned to the well until all interests have been consolidated (by communitization, unitization, forced-pooling, or otherwise) or until a non-standard unit, eliminating such interests, has been approved by the Commission.

			
Sec.		24	
Cont. 429		790'	
		1850'	

Scale: 1"=1000'

## CERTIFICATION

I hereby certify that the information contained herein is true and complete to the best of my knowledge and belief.

Name  
**Steve S. Dunn**  
Position  
**Operations Manager**  
Company  
**Merrion Oil & Gas Corp.**

Date  
**1/2/85**

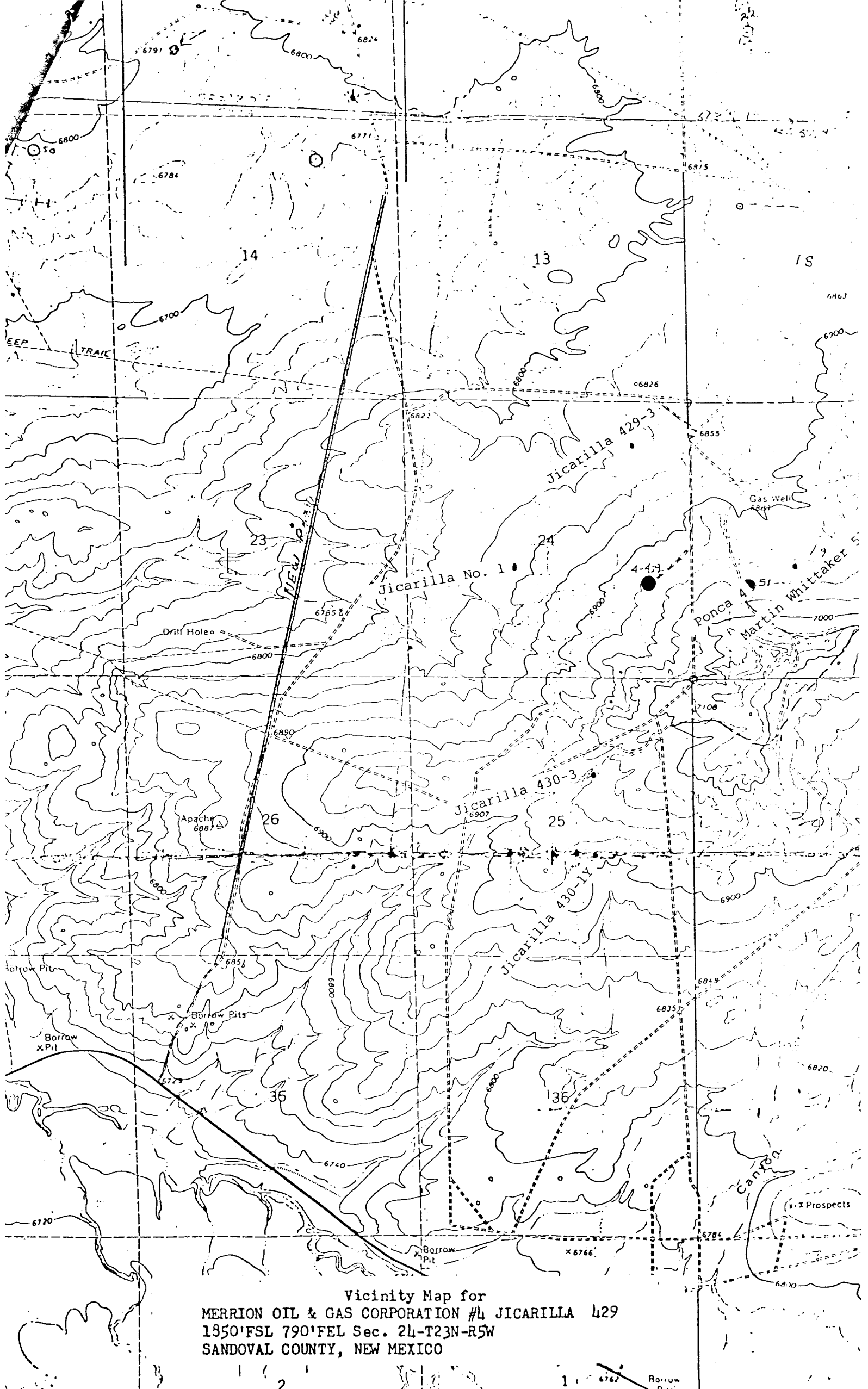
I hereby certify that the well location shown on this plat was plotted from field notes of actual surveys made by me or under my supervision, and that the same is true and correct to the best of my knowledge and belief.

Date Surveyed  
**December 21, 1984**

Registered Professional Engineer and Land Surveyor.

  
**Fred B. Kerr Jr.**

Certificate No. **13950**



Vicinity Map for  
MERRION OIL & GAS CORPORATION #4 JICARILLA 429  
1850'FSL 790'FEL Sec. 24-T23N-R5W  
SANDOVAL COUNTY, NEW MEXICO