

UNITED STATES  
DEPARTMENT OF THE INTERIOR  
BUREAU OF LAND MANAGEMENT

APPLICATION FOR PERMIT TO DRILL, DEEPEN, OR PLUG BACK

1a. TYPE OF WORK

DRILL ☒

DEEPEN ☐

PLUG BACK ☐

b. TYPE OF WELL

OIL  
WELL ☒

GAS  
WELL ☐

OTHER

SINGLE  
ZONE ☐

MULTIPLE  
ZONE ☐

2. NAME OF OPERATOR

Diamond Shamrock Corporation c/o Ned Dollar, Agent

3. ADDRESS OF OPERATOR

P. O. Box 399 Aztec, NM 87410

4. LOCATION OF WELL (Report location clearly and in accordance with any State requirements.)\*  
At surface

1980' FNL & 1980' FWL Section 29, T20N., R4W.

At proposed prod. zone

14. DISTANCE IN MILES AND DIRECTION FROM NEAREST TOWN OR POST OFFICE\*

Approximatley 6 miles south and 18 miles west of Cuba, NM.

15. DISTANCE FROM PROPOSED\*  
LOCATION TO NEAREST  
PROPERTY OR LEASE LINE, FT.  
(Also to nearest drlg. unit line, if any)

16. NO. OF ACRES IN LEASE  
160

17. NO. OF ACRES ASSIGNED  
TO THIS WELL  
40

18. DISTANCE FROM PROPOSED LOCATION\*  
TO NEAREST WELL, DRILLING, COMPLETED,  
OR APPLIED FOR, ON THIS LEASE, FT.

19. PROPOSED DEPTH  
4500'

20. ROTARY OR CABLE TOOLS  
Rotary

21. ELEVATIONS (Show whether DF, RT, GR, etc.)

6698'

DRILLING OPERATIONS AUTHORIZED ARE  
SUBJECT TO COMPLIANCE WITH ATTACHED

22. APPROX. DATE WORK WILL START\*

April 30, 1985

23.

"GENERAL REQUIREMENTS"  
PROPOSED CASING AND CEMENTING PROGRAM

This action is subject to administrative  
appeal pursuant to 30 CFR 290.

SIZE OF HOLE	SIZE OF CASING	WEIGHT PER FOOT	SETTING DEPTH	QUANTITY OF CEMENT
13-1/2"	9-5/8"	36# K-55	500'	Cement to surface
8-3/4"	7"	23#	3250'	Determined by Caliper Log
6"	4-1/2"	10.50 K-55	TD (1650')	5 sx cement

Drill 13-1/2" surface hole to 500'. Cement. to surface. Well to be drilled  
with 9# mud weight. From casing point to TD with air-mist.

RECEIVED  
MAY 22 1985  
OIL CON. DIV  
DIST. ?

IN ABOVE SPACE DESCRIBE PROPOSED PROGRAM: If proposal is to deepen or plug back, give data on present productive zone and proposed new productive zone. If proposal is to drill or deepen directionally, give pertinent data on subsurface locations and measured and true vertical depths. Give blowout preventer program, if any.

24.

SIGNED

TITLE

Agent

DATE March 21, 1985

(This space for Federal or State office use)

PERMIT NO.

APPROVAL DATE

APPROVED  
AS AMENDED

APPROVED BY

TITLE

CONDITIONS OF APPROVAL, IF ANY:

MAY 21 1985

M. MILLENBACH  
AREA MANAGER

NMOCC

\*See Instructions On Reverse Side

## OIL CONSERVATION DIVISION

OF NEW MEXICO  
AND MINERALS DEPARTMENT

P. O. BOX 2088  
SANTA FE, NEW MEXICO 87501

Form C-107  
Revised 10-1

All distances must be from the outer boundaries of the Section.

Operator <b>DIAMOND SHAMROCK EXPLORATION CO.</b>		Lease <b>PENISTAJA 22</b>		Well No. <b>22-29</b>
Unit Letter <b>F</b>	Section <b>29</b>	Township <b>20N</b>	Range <b>4W</b>	County <b>Sandoval</b>
Actual Footage Location of Well: <b>1980</b> feet from the <b>North</b> line and <b>1980</b> feet from the <b>West</b> line				
Ground Level Elev. <b>6698</b>	Producing Formation <b>Gallup</b>	Pool <b>W.C.</b>	Dedicated Acreage: <b>40</b> Acres	

1. Outline the acreage dedicated to the subject well by colored pencil or hatchure marks on the plat below.
2. If more than one lease is dedicated to the well, outline each and identify the ownership thereof (both as to working interest and royalty).
3. If more than one lease of different ownership is dedicated to the well, have the interests of all owners been consolidated by communitization, unitization, force-pooling, etc?

☐ Yes ☒ No If answer is "yes," type of consolidation \_\_\_\_\_

If answer is "no," list the owners and tract descriptions which have actually been consolidated. (Use reverse side of this form if necessary.) \_\_\_\_\_

No allowable will be assigned to the well until all interests have been consolidated (by communitization, unitization, forced-pooling, or otherwise) or until a non-standard unit, eliminating such interests, has been approved by the Commission.

Scale: 1"=1000'

## CERTIFICATION

I hereby certify that the information contained herein is true and complete to the best of my knowledge and belief.

Name

Ned Dollar

Position

Agent

Company

Diamond Shamrock Corp.

Date

March 21, 1985

I hereby certify that the well location shown on this plat was plotted from field notes of actual surveys made by me or under my supervision, and that the same is true and correct to the best of my knowledge and belief.

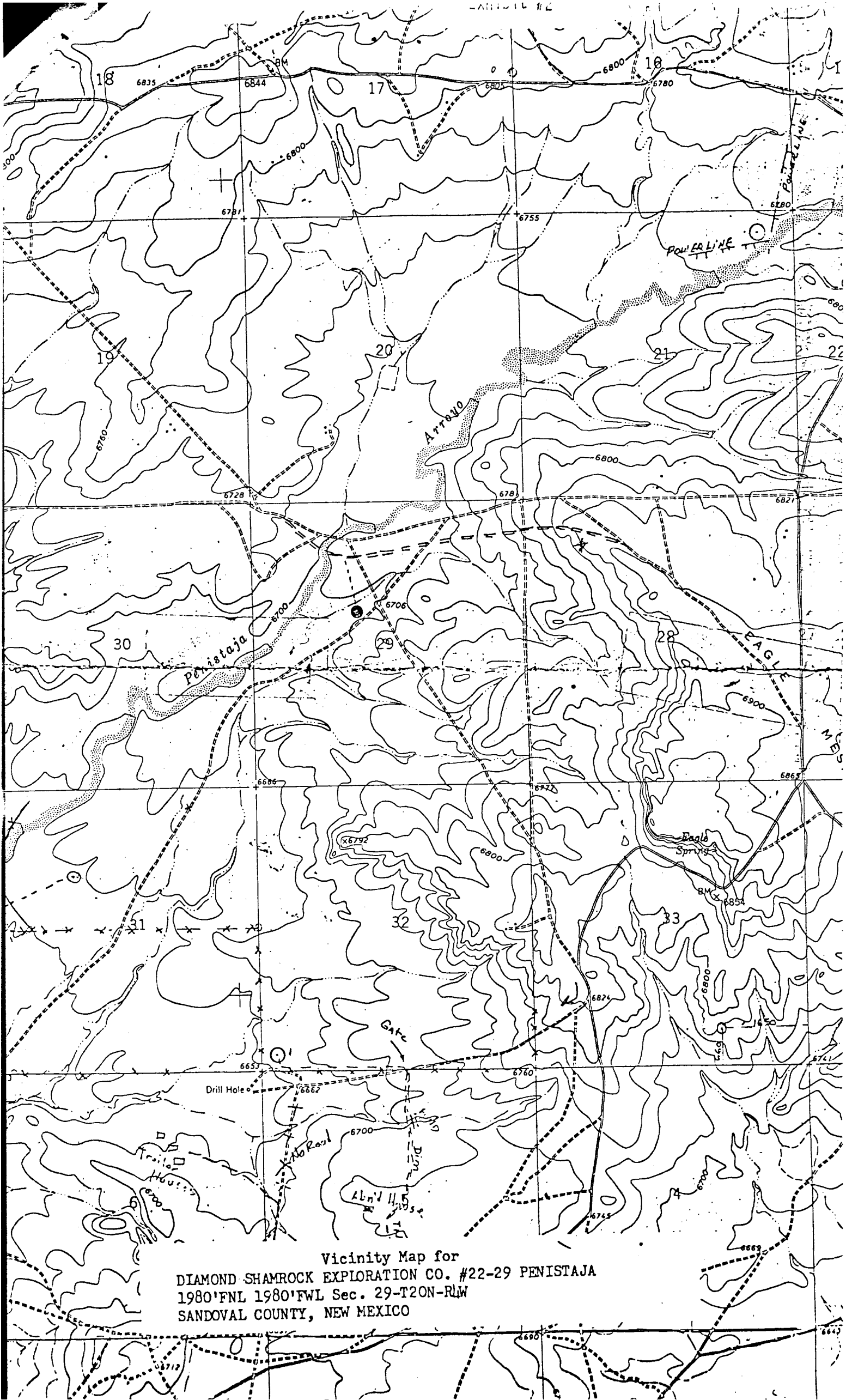
Date Surveyed

REGISTERED LAND  
Registered Professional Engineer  
and Land Surveyor  
Fred B. Kerr Jr.

Certificate No.

3950

KERR, JR.



Vicinity Map for  
DIAMOND SHAMROCK EXPLORATION CO. #22-29 PENISTAJA  
1980'FNL 1980'FWL Sec. 29-T20N-RLW  
SANDOVAL COUNTY, NEW MEXICO