

UNITED STATES  
DEPARTMENT OF THE INTERIOR  
BUREAU OF LAND MANAGEMENT

APPLICATION FOR PERMIT TO DRILL, DEEPEN, OR PLUG BACK

1a. TYPE OF WORK  
DRILL ☒ DEEPEN ☐ PLUG BACK ☐

b. TYPE OF WELL  
OIL WELL ☒ GAS WELL ☐ OTHER ☐  
SINGLE ZONE ☒ MULTIPLE ZONE ☐

2. NAME OF OPERATOR  
Merrion Oil & Gas Corporation

3. ADDRESS OF OPERATOR  
P. O. Box 1017, Farmington, New Mexico 87499

4. LOCATION OF WELL (Report location clearly and in accordance with State requirements.)  
At surface 660' FSL and 660' FEL  
At proposed prod. zone Same

14. DISTANCE IN MILES AND DIRECTION FROM NEAREST TOWN OR VILLAGE  
12 miles East of Counselor, New Mexico

15. DISTANCE FROM PROPOSED\*  
LOCATION TO NEAREST  
PROPERTY OR LEASE LINE, FT.  
(Also to nearest drilg. unit line, if any)  
660

18. DISTANCE FROM PROPOSED LOCATION\*  
TO NEAREST WELL, DRILLING, COMPLETED,  
OR APPLIED FOR, ON THIS LEASE, FT.  
1250

21. ELEVATIONS (Show whether DF, RT, GR, etc.)  
6874' GL

23. PROPOSED CASING AND CEMENTING PROGRAM

SIZE OF HOLE	SIZE OF CASING	WEIGHT PER FOOT	SETTING DEPTH	QUANTITY OF CEMENT
12-1/4"	8-5/8", J-55	23 #/ft.	200	170 sx (200.6 cu. ft.)
7-7/8"	4-1/2", J-55	10.5 #/ft.	6270	925 sx (1633 cu. ft.)

Propose to drill 12-1/4" hole to 200 ft. and set 200 ft. of 8-5/8", 23 #/ft. new surface casing with 170 sx Class B 2% CaCl<sub>2</sub>. Will drill 7-7/8" hole to TD and run open hole logs. If logs appear productive, will run 4-1/2", J-55, 10.5 #/ft. new casing to TD and 2 stage cement. 1st Stage: 225 sx Class B, 2% gel to cover Gallup. Stage tool below Point Lookout at 4642' est. 2nd Stage: 600 sx Class B with 2% D-79 followed by 100 sx Class B 2% gel. Will bring cement above Ojo Alamo. Drilling mud will be low water loss gel, fresh water, starch. Will perforate and frac as necessary. Blowout prevention equipment will be 10" 900 series double ram.

ESTIMATED TOPS

Ojo Alamo	1684	Cliffhouse	3674	Gallup	5416
Kirtland	1769	Menefee	3734	Sanostee	6049
Fruitland	2184	Point Lookout	4354	TD	6270
Pictured Cliffs	2184	Mancos	4594		

IN ABOVE SPACE DESCRIBE PROPOSED PROGRAM: If proposal is to deepen or plug back, give data on present productive zone and proposed new productive zone. If proposal is to drill or deepen directionally, give pertinent data on subsurface locations and measured and true vertical depths. Give blowout prevention program, if any.

24. SIGNED *[Signature]* TITLE Operations Manager  
(This space for Federal or State office use)

This action is subject to technical and procedural review pursuant to 43 CFR 3165.3 and appeal pursuant to 43 CFR 3165.4.

RECEIVED  
JUL 10 1985  
OIL CON. DIV.  
DIST. 3  
APPROVED  
AS AMENDED  
JUL 09 1985  
(SG) MAT MILLENBACH  
M. MILLENBACH  
AREA MANAGER

\*See Instructions On Reverse Side

NEW MEXICO OIL CONSERVATION COMMISSION  
WELL LOCATION AND ACREAGE DEDICATION PLAT

Form C-102  
Supersedes C-128  
Effective 1-1-65

All distances must be from the outer boundaries of the Section

Operator <b>MERRION OIL &amp; GAS CORPORATION</b>			Lease <b>JICARILIA 430</b>		Well No. <b>10</b>
Unit Letter <b>P</b>	Section <b>25</b>	Township <b>23N</b>	Range <b>5W</b>	County <b>Sandoval</b>	
Actual Footage Location of Well: <b>660</b> feet from the <b>South</b> line and <b>660</b> feet from the <b>East</b> line					
Ground Level Elev: <b>6874</b>	Producing Formation <b>Gallup</b>	Pool <b>Undes. Gallup</b>		Dedicated Acreage: <b>40</b> Acres	

1. Outline the acreage dedicated to the subject well by colored pencil or hachure marks on the plat below.
2. If more than one lease is dedicated to the well, outline each and identify the ownership thereof (both as to working interest and royalty).
3. If more than one lease of different ownership is dedicated to the well, have the interests of all owners been consolidated by communitization, unitization, force-pooling, etc?

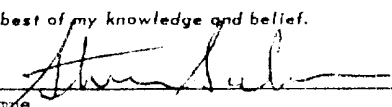
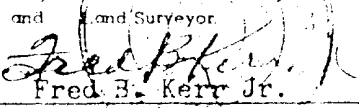
☐ Yes ☐ No If answer is "yes," type of consolidation \_\_\_\_\_

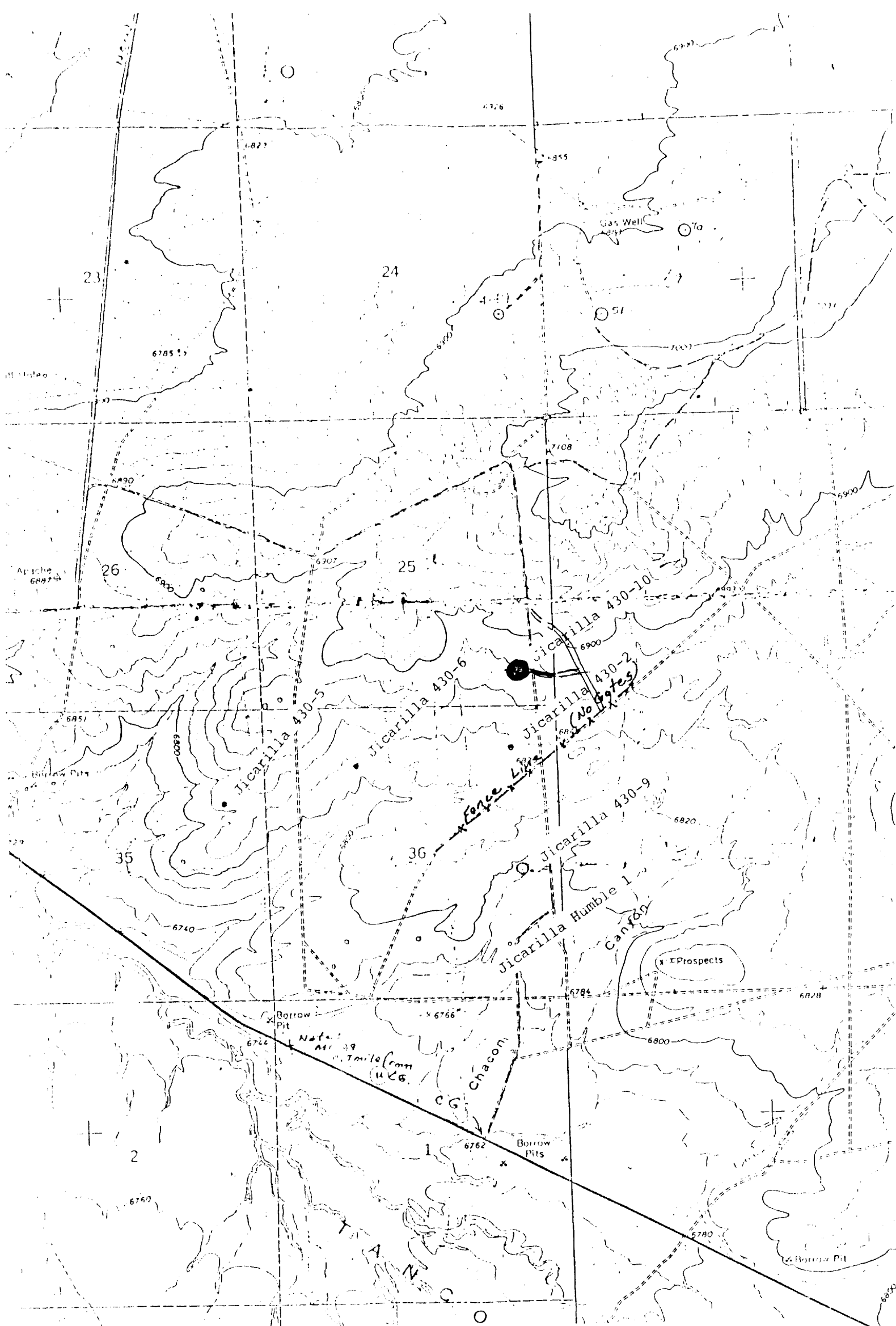
If answer is "no," list the owners and tract descriptions which have actually been consolidated. (Use reverse side of this form if necessary.) \_\_\_\_\_

No allowable will be assigned to the well until all interests have been consolidated (by communitization, unitization, forced-pooling, or otherwise) or until a non-standard unit, eliminating such interests, has been approved by the Commission.

Sec.		<p align="center"><b>RECEIVED</b> MAY 17 1985 BUREAU OF LAND MANAGEMENT FARMINGTON RESOURCE AREA</p>	
<p align="center"><b>RECEIVED</b> JUL 10 1985 OIL CON. DIV. DENVER</p>		25	
		Cont. 430	
		<p align="right">660'</p> <p align="right">660'</p>	

Scale: 1"=1000'

CERTIFICATION	
I hereby certify that the information contained herein is true and complete to the best of my knowledge and belief.	
 Name Steve S. Dunn	
Position Operations Manager	
Company Merrion Oil & Gas Corp.	
Date 4/23/85	
I hereby certify that the well location shown on this plat was plotted from field notes of actual surveys made by me or under my supervision, and that the same is true and correct to the best of my knowledge and belief.	
Date Surveyed April 19, 1985	
Registered Professional Engineer and Land Surveyor  Fred E. Kerr Jr.	
Certificate No. 3950	



Vicinity Map for  
 MERRION OIL & GAS CORP, #10 JICARILLA 430  
 660'FSL 660'FSL Sec. 25-T23N-R5W  
 SANDOVAL COUNTY, NEW MEXICO