

UNITED STATES
DEPARTMENT OF THE INTERIOR
BUREAU OF LAND MANAGEMENT

30-043-20778

APPLICATION FOR PERMIT TO DRILL, DEEPEN, OR PLUG BACK

1a. TYPE OF WORK

DRILL ☒

DEEPEN ☐

PLUG BACK ☐

b. TYPE OF WELL

OIL
WELL ☒

GAS
WELL ☐

OTHER Comingled

SINGLE
ZONE ☐

MULTIPLE
ZONE ☐

2. NAME OF OPERATOR

W. B. Martin and Associates

3. ADDRESS OF OPERATOR

709 N. Butler Farmington, N.M. 87401

4. LOCATION OF WELL (Report location clearly and in accordance with any State requirements.)

At surface

790' FNL and 790' FWL

At proposed prod. zone

14. DISTANCE IN MILES AND DIRECTION FROM NEAREST TOWN OR POST OFFICE

15 miles NW of Cuba, N.M.

15. DISTANCE FROM PROPOSED*

LOCATION TO NEAREST

PROPERTY OR LEASE LINE, FT.

(Also to nearest drlg. unit line, if any)

790' FNL

16. NO. OF ACRES IN LEASE

1920

17. NO. OF ACRES ASSIGNED

TO THIS WELL

40

18. DISTANCE FROM PROPOSED LOCATION*

TO NEAREST WELL, DRILLING, COMPLETED,
OR APPLIED FOR, ON THIS LEASE, FT.

3960'

19. PROPOSED DEPTH

7070'

20. ROTARY OR CABLE TOOLS

Rotary

21. ELEVATIONS (Show whether DF, RT, GR, etc.)

7146' 3R

DRILLING OPERATIONS AUTHORIZED ARE
SUBJECT TO COMPLIANCE WITH ATTACHED

"GENERAL REQUIREMENTS" CEMENTING PROGRAM

22. APPROX. DATE WORK WILL START*

Dependant upon approval

23.

This action is subject to administrative
appeal pursuant to 30 CFR 2901

SIZE OF HOLE	SIZE OF CASING	WEIGHT PER FOOT	SETTING DEPTH	QUANTITY OF CEMENT
12 1/4"	9 5/8"	32#	250'	206.60 ft ³
7 7/8"	5 1/2"	17#	7070'	1200.00 ft ³

PROPOSED OPERATIONS

1. Drill 12 1/4" hole to \pm 250' with spud mud. Run and cement 9 5/8" casing. WOC 12 hours. Pressure test BOP to 1000 PSI.
2. Drill 7 7/8" hole to total depth with low solids-low water loss mud. Run and cement long string.

RECEIVED
JUL 29 1985
OIL CON. DIV.
DIST. 3

IN ABOVE SPACE DESCRIBE PROPOSED PROGRAM: If proposal is to deepen or plug back, give data on present productive zone and proposed new productive zone. If proposal is to drill or deepen directionally, give pertinent data on subsurface locations and measured and true vertical depths. Give blowout preventer program, if any.

24.

SIGNED

W.B. Martin Jr.

TITLE Operator

(This space for Federal or State office use)

PERMIT NO.

APPROVAL DATE

APPROVED BY

TITLE

CONDITIONS OF APPROVAL, IF ANY:

10/8/84
APPROVED
AS AMENDED
DEC 26 1984
DATE
FARM

OPERATOR
*See Instructions On Reverse Side

Title 18 U.S.C. Section 1001, makes it a crime for any person knowingly and willfully to make to any department or agency of the United States any false, fictitious or fraudulent statements or representations as to any matter within its jurisdiction.

All distances must be from the outer boundaries of the Section.

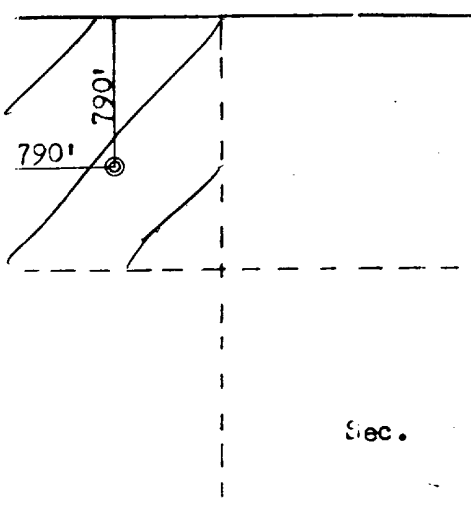
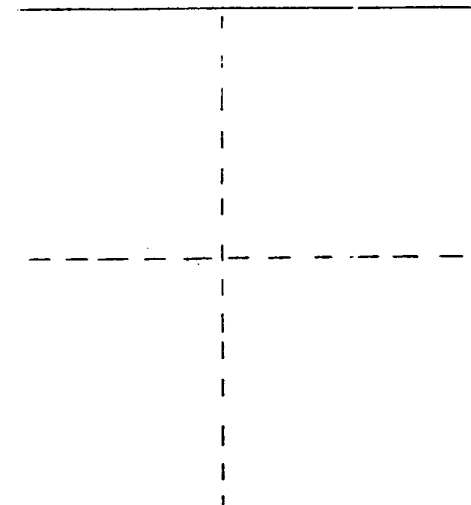
Operator W. B. MARTIN & ASSOCIATES		Lease MARTIN-WHITAKER		Well No. 62
Section Letter D	Section 23	Township 23N	Range LW	County Sandoval
Well Footage Location of Well: 790 feet from the North line and 790 feet from the West line				
Well Level Elev: 7146	Producing Formation Gallup-Dakota	Pool South Lindrith Gallup Dakota Extension		Dedicated Acreage: 40 Acres

1. Outline the acreage dedicated to the subject well by colored pencil or hachure marks on the plat below.
2. If more than one lease is dedicated to the well, outline each and identify the ownership thereof (both as to working interest and royalty).
3. If more than one lease of different ownership is dedicated to the well, have the interests of all owners been consolidated by communitization, unitization, force-pooling, etc?

☐ Yes ☐ No If answer is "yes," type of consolidation _____

If answer is "no," list the owners and tract descriptions which have actually been consolidated. (Use reverse side of this form if necessary.) _____

No allowable will be assigned to the well until all interests have been consolidated (by communitization, unitization, forced-pooling, or otherwise) or until a non-standard unit, eliminating such interests, has been approved by the Commission.

	Sec.
	23
	

Scale: 1"=1000'

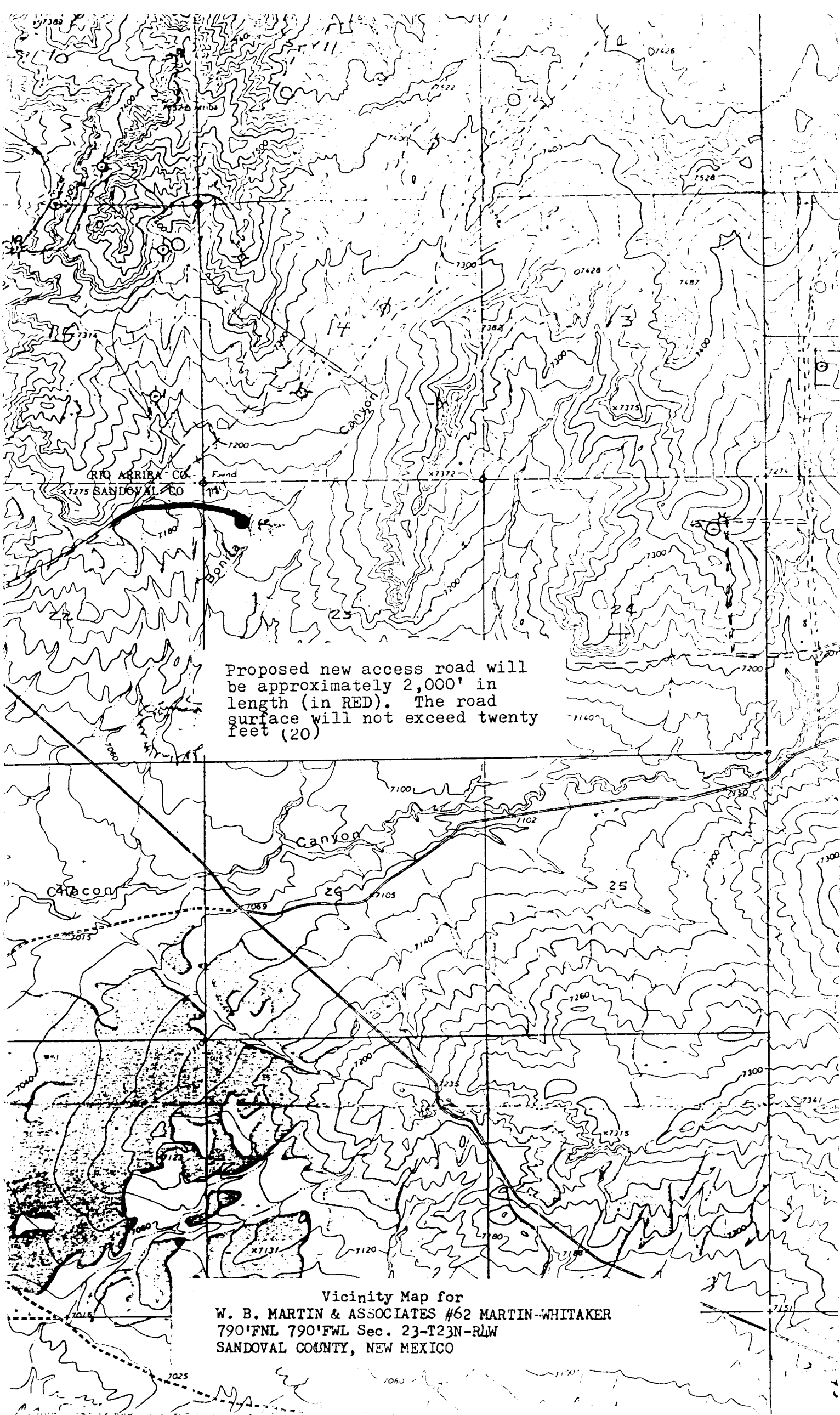
CERTIFICATION

I hereby certify that the information contained herein is true and complete to the best of my knowledge and belief.

Name
W.B. Martin Jr.
Position
Operator
Company
W.B. Martin & Associates
Date
10/8/84

I hereby certify that the well location shown on this plat was plotted from field notes of actual surveys made by me or under my supervision, and that the same is true and correct to the best of my knowledge and belief.

Date Surveyed
October 6, 1984
Registered Professional Engineer and Land Surveyor
Fred B. Kerr Jr.
Fred B. Kerr Jr.
Certificate No. 3950



Proposed new access road will be approximately 2,000' in length (in RED). The road surface will not exceed twenty feet (20)

Vicinity Map for
W. B. MARTIN & ASSOCIATES #62 MARTIN-WHITAKER
790'FNL 790'FWL Sec. 23-T23N-RLW
SANDOVAL COUNTY, NEW MEXICO