

UNITED STATES  
DEPARTMENT OF THE INTERIOR  
BUREAU OF LAND MANAGEMENT

APPLICATION FOR PERMIT TO DRILL, DEEPEN, OR PLUG BACK

1a. TYPE OF WORK

DRILL ☒

DEEPEN ☐

PLUG BACK ☐

b. TYPE OF WELL

OIL  
WELL ☒

GAS  
WELL ☐

OTHER ☐

SINGLE  
ZONE ☒

MULTIPLE  
ZONE ☐

2. NAME OF OPERATOR

Robert L. Bayless

3. ADDRESS OF OPERATOR

P.O. Box 168, Farmington, NM 8749

4. LOCATION OF WELL (Report location clearly and in accordance with any State requirements.)\*

At surface

790' FNL & 790' FWL

At proposed prod. zone

14. DISTANCE IN MILES AND DIRECTION FROM NEAREST TOWN OR POST OFFICE

same

BUREAU OF LAND MANAGEMENT  
FARMINGTON RESOURCE AREA

15. DISTANCE FROM PROPOSED\*

LOCATION TO NEAREST  
PROPERTY OR LEASE LINE, FT.  
(Also to nearest drlg. unit line, if any)

16. NO. OF ACRES IN LEASE

2134

17. NO. OF ACRES ASSIGNED  
TO THIS WELL

6.7-24

18. DISTANCE FROM PROPOSED LOCATION\*  
TO NEAREST WELL, DRILLING, COMPLETED,  
OR APPLIED FOR, ON THIS LEASE, FT.

19. PROPOSED DEPTH

6870'

20. ROTARY OR CABLE TOOLS

0 - TD

21. ELEVATIONS (Show whether DF, RT, GR, etc.)

6807' GL

DRILLING OPERATIONS AUTHORIZED ARE  
SUBJECT TO COMPLIANCE WITH ATTACHED  
\*GENERAL REQUIREMENTS\*

22. APPROX. DATE WORK WILL START\*

ASAP

23. PROPOSED CASING AND CEMENTING PROGRAM

This action is subject to technical and  
procedural review pursuant to 43 CFR 3165.3  
and appeal pursuant to 43 CFR 3165.4.

SIZE OF HOLE	SIZE OF CASING	WEIGHT PER FOOT	SETTING DEPTH	QUANTITY OF CEMENT
12 1/4"	8-5/8"	24#/ft	200'	207 ft <sup>3</sup> Class B w/2% CaCl <sub>2</sub>
7-7/8"	4 1/2"	10.5#/ft	6870'	2037 ft <sup>3</sup> Class B w/2% D-79

Will drill 12 1/4" surface hole to 200' and set 200' 8-5/8" 24#/ft J-55 casing with 207 ft<sup>3</sup> Class B cement w/2% CaCl<sub>2</sub>. Will drill 7-7/8" hole to 6870'. Will run Induction and Density logs and if well appears productive, will run 6870' 4 1/2", 10.5#/ft J-55 casing and stage cement. 1st: 535 ft<sup>3</sup> (425 sx) 50-50 pozmix w/2% gel to cover Gallup interval from TD. Estimated top of cement is 5000'. Will set stage collar at approx. 4671', below Pt. Lookout formation. 2nd: 1442 ft<sup>3</sup> Class B 2% D-70 (700 sx) followed by 60 ft<sup>3</sup> 50-50 pozmix w/2% gel (48 sx) to cover Mesaverde, Chacra, Pic. Cliffs, Fruitland & Ojo Alamo. Top of cement will be at surface. Circulating medium will be clear water, natural mud and water loss control additives. No abnormal pressures or temperatures are anticipated. Blowout preventer schematic is attached. The gas from this formation is dedicated. Will perforate and stimulate as required for completion.

ESTIMATED TOPS: Ojo Alamo - 1756' Gallup - 5489'  
Pictured Cliffs - 2254' T.D. - 6870'  
Pt. Lookout - 4439

IN ABOVE SPACE DESCRIBE PROPOSED PROGRAM: If proposal is to deepen or plug back, give data on present productive zone and proposed new productive zone. If proposal is to drill or deepen directionally, give pertinent data on subsurface locations and measured and true vertical depths. Give blowout preventer program, if any.

24.

SIGNED

TITLE

Operator

DATE 10/17/85

(This space for Federal or State office use)

PERMIT NO.

APPROVAL DATE

DEC 12 1985

APPROVED BY

TITLE

CON. DIV.

DATE DEC 10 1985

/s/ J. Stan McKee

NMOCC

DIST. 3

M. MILLENBACH  
AREA MANAGER

\*See Instructions On Reverse Side

**NEW MEXICO OIL CONSERVATION COMMISSION  
WELL LOCATION AND ACREAGE DEDICATION PLAT**

Form C-103  
Supersedes C-128  
Effective 1-1-85

All distances must be from the outer boundaries of the Section.

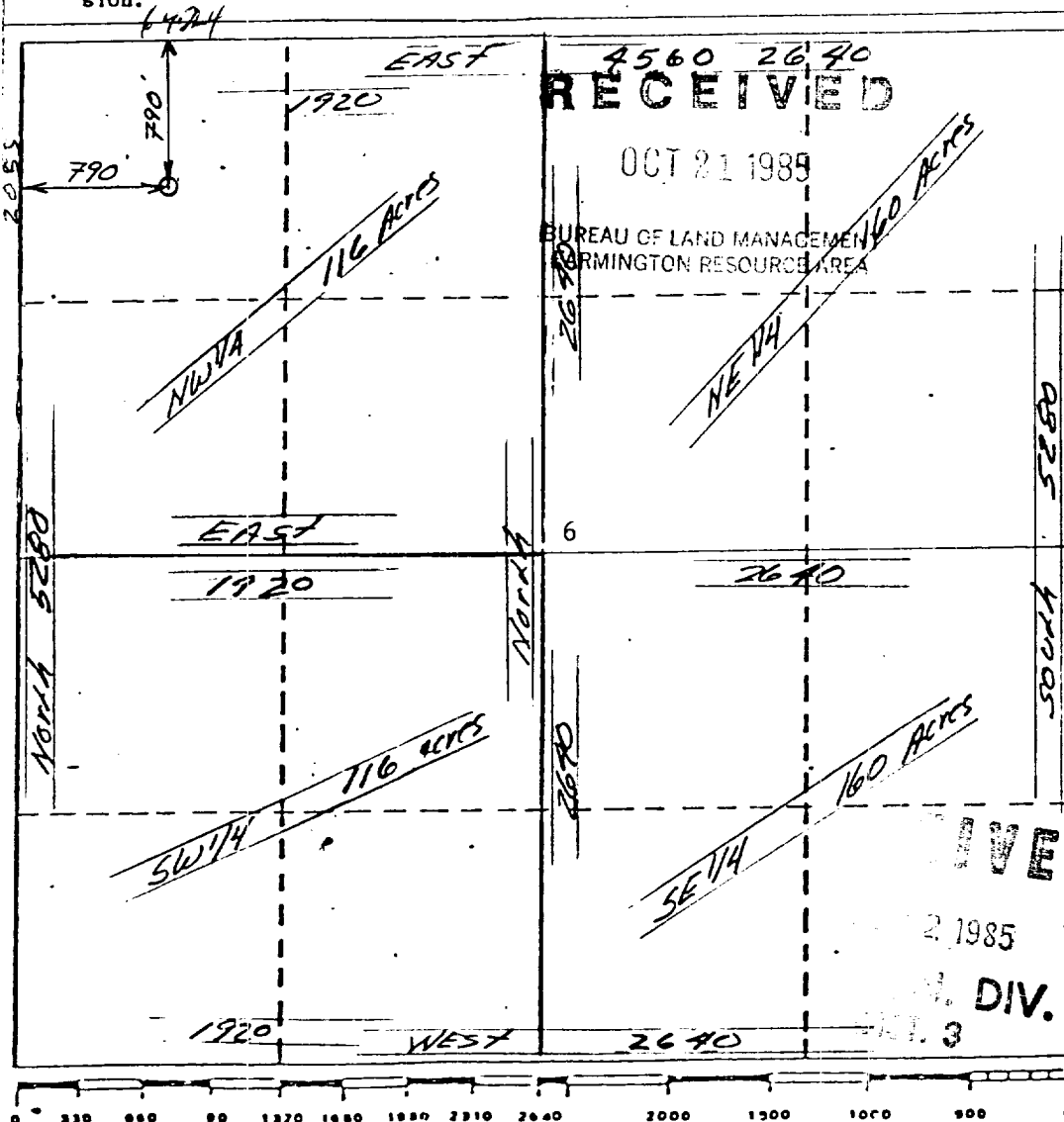
Operator <b>Robert L. Bayless</b>			Lease <b>434 JICARILLA 429 G</b>		Well No. <b>B-1</b>
Unit Letter <b>C</b>	Section <b>6</b>	Township <b>22 NORTH</b>	Range <b>4 WEST</b>	County <b>SANDOVAL</b>	
Actual Footage Location of Well: <div style="display: flex; justify-content: space-between;"> <span>790 feet from the NORTH line and</span> <span>790 feet from the WEST line</span> </div>					
Ground Level Elev. <b>6807</b>	Producing Formation <b>Gallup</b>	Pool <b>S. L. L. Gulf / DR EXL</b>	Dedicated Acreage: <b>40-31-1/4 Acres</b>		

- Outline the acreage dedicated to the subject well by colored pencil or hachure marks on the plat below.
- If more than one lease is dedicated to the well, outline each and identify the ownership thereof (both as to working interest and royalty).
- If more than one lease of different ownership is dedicated to the well, have the interests of all owners been consolidated by communitization, unitization, force-pooling, etc?

☐ Yes ☐ No If answer is "yes," type of consolidation \_\_\_\_\_

If answer is "no," list the owners and tract descriptions which have actually been consolidated. (Use reverse side of this form if necessary.) \_\_\_\_\_

No allowable will be assigned to the well until all interests have been consolidated (by communitization, unitization, forced-pooling, or otherwise) or until a non-standard unit, eliminating such interests, has been approved by the Commission.



**CERTIFICATION**

I hereby certify that the information contained herein is true and complete to the best of my knowledge and belief.

*Robert L. Bayless*  
Name

Robert L. Bayless

Position

Operator

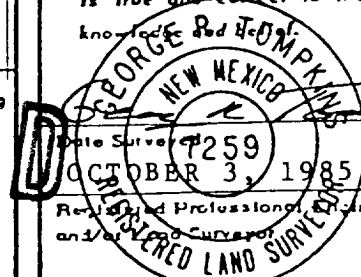
Company

Robert L. Bayless

Date

• 10/17/85

I hereby certify that the well location shown on this plat was plotted from field notes of actual surveys made by me or under my supervision, and that the same is true and correct to the best of my knowledge.



GEORGE R. TOMPKINS

Certificate No.

7259

