

**NEW MEXICO OIL CONSERVATION COMMISSION
WELL LOCATION AND ACREAGE DEDICATION PLAT**

Form C-103
Supersedes C-128
Effective 1-1-63

All distances must be from the outer boundaries of the Section.

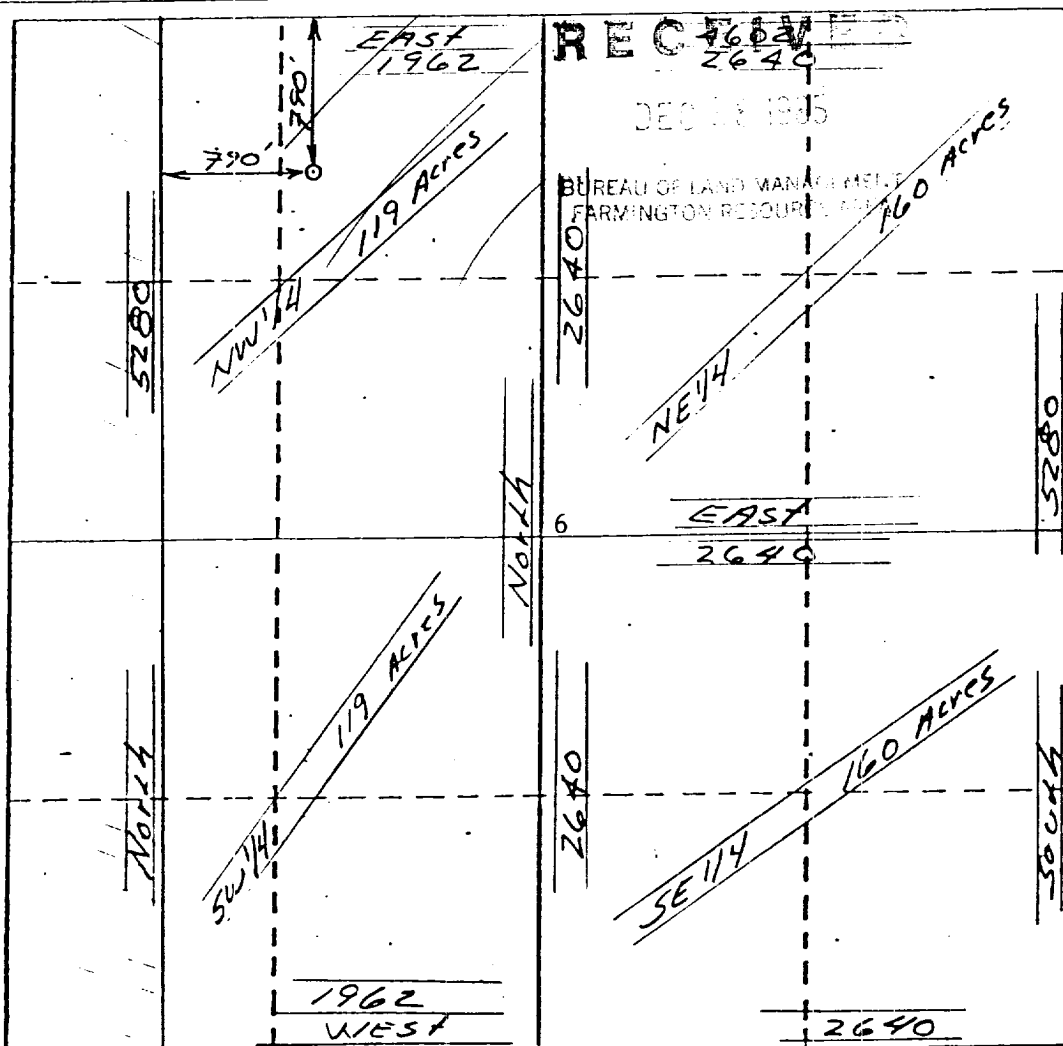
Operator ROBERT L. BAYLESS PRODUCER			Lease JICARILLA 434 G		Well No. 1
Unit Letter C	Section 6	Township 22 NORTH	Range 4 WEST	County SANDOVAL	
Actual Footage Location of Well: <div style="display: flex; justify-content: space-between;"> 790 feet from the NORTH line and 790 feet from the WEST line </div>					
Ground Level Elev. 6807	Producing Formation Gallup	Pool Unders. Gallup		Dedicated Acreage: 63.24 40 Acres	

1. Outline the acreage dedicated to the subject well by colored pencil or hachure marks on the plat below.
2. If more than one lease is dedicated to the well, outline each and identify the ownership thereof (both as to working interest and royalty).
3. If more than one lease of different ownership is dedicated to the well, have the interests of all owners been consolidated by communitization, unitization, force-pooling, etc?

☐ Yes ☐ No If answer is "yes," type of consolidation _____

If answer is "no," list the owners and tract descriptions which have actually been consolidated. (Use reverse side of this form if necessary.) _____

No allowable will be assigned to the well until all interests have been consolidated (by communitization, unitization, forced-pooling, or otherwise) or until a non-standard unit, eliminating such interests, has been approved by the Commission.



CERTIFICATION

I hereby certify that the information contained herein is true and complete to the best of my knowledge and belief.

Name
Robert L. Bayless
Position
Operator
Company
Robert L. Bayless

Date
12-16-85

I hereby certify that the well location shown on this plat was plotted from field notes of actual surveys made by me or under my supervision, and that the same is true and correct to the best of my knowledge and belief.

Plat Reviewed **12/16/85**

Date Surveyed
October 13, 1985
Registered Professional Engineer and Land Surveyor

George R. Tompkins

Certificate No.

7259