

UNITED STATES
DEPARTMENT OF THE INTERIOR
BUREAU OF LAND MANAGEMENT

APPLICATION FOR PERMIT TO DRILL, DEEPEN, OR PLUG BACK

1a. TYPE OF WORK

DRILL ☒

DEEPEN ☐

PLUG BACK ☐

b. TYPE OF WELL

OIL
WELL ☒

GAS
WELL ☐

OTHER

SINGLE
ZONE ☒

MULTIPLE
ZONE ☐

2. NAME OF OPERATOR

Mallon Oil Company

3. ADDRESS OF OPERATOR

2850 Security Life Building, Denver, CO 80202

4. LOCATION OF WELL (Report location clearly and in accordance with any State or Federal requirements)

At surface

1850' FNL & 1850' FWL

At proposed prod. zone

same

14. DISTANCE IN MILES AND DIRECTION FROM NEAREST TOWN OR POST OFFICE*

BUREAU OF LAND MANAGEMENT

CASAMUNTING RESOURCE AREA

15. DISTANCE FROM PROPOSED*

LOCATION TO NEAREST
PROPERTY OR LEASE LINE, FT.
(Also to nearest drig. unit line, if any)

16. NO. OF ACRES IN LEASE

2492

17. NO. OF ACRES ASSIGNED
TO THIS WELL

40

18. DISTANCE FROM PROPOSED LOCATION*

TO NEAREST WELL, DRILLING, COMPLETED,
OR APPLIED FOR, ON THIS LEASE, FT.

19. PROPOSED DEPTH

6060'

20. ROTARY OR CABLE TOOLS

0 - T.D.

21. ELEVATIONS (Show whether DF, RT, GR, etc.)

6840' GL

6853' RKB

DRILLING OPERATIONS AUTHORIZED ARE
SUBJECT TO COMPLIANCE WITH ATTACHED
"GENERAL REQUIREMENTS"

This action is subject to technical and
procedural review pursuant to 43 CFR 3165.3
and appeal pursuant to 43 CFR 3165.4.

23.

PROPOSED CASING AND CEMENTING PROGRAM

SIZE OF HOLE	SIZE OF CASING	WEIGHT PER FOOT	SETTING DEPTH	QUANTITY OF CEMENT
12 1/4"	8-5/8"	24#/ft	200	207 ft ³ Class B w/2% CaCl ₂
7-7/8"	4 1/2"	10.53/ft	6060'	2037 ft ³ Class B w/2% D-79

Will drill 12 1/4" surface hole to 200' and set 200' 8-5/8" 24#/ft J-55 casing cementing with 207 ft³ Class B w/2% CaCl₂. Will drill 7-7/8" hole to 6060'. Will run Induction and Density logs and if well appears productive, will run 6060' 4 1/2" 10.5#/ft J-55 casing and stage cement. 1st: 535 ft³ (425 sx) 50-50 pozmix w/2% gel to cover Gallup interval from TD. Estimated top of cement is 5000'. Will set stage collar at approx. 4671', below Pt. Lookout formation. 2nd: 1442 ft³ Class B 2% D-79 (700 sx) followed by 60 ft³ 50-50 pozmix w/2% gel (48 sx) to cover Mesaverde, Chacra, P.C., Fruitland & Ojo Alamo. Top of cement will be at surface. Circulating medium will be clear water, natural mud and water loss control additives. No abnormal pressures or temperatures are anticipated. Blowout preventer schematic is attached. The gas from this formation is dedicated. Will perforate and stimulate as required for completion.

ESTIMATED TOPS: Ojo Alamo - 1602' Gallup - 4917'
Pictured Cliffs - 1990' T.D. - 6060'
Pt. Lookout - 4115'

IN ABOVE SPACE DESCRIBE PROPOSED PROGRAM: If proposal is to deepen or plug back, give data on present productive zone and proposed new productive zone. If proposal is to drill or deepen directionally, give pertinent data on subsurface locations and measured and true vertical depths. Give blowout preventer program, if any.

24.

SIGNED

John Burger

TITLE Agent

9-30-86

(This space for Federal or State office use)

PERMIT NO.

APPROVAL DATE

APPROVED
AS AMENDED

APPROVED BY

TITLE

NOV 13 1986

CONDITIONS OF APPROVAL, IF ANY:

NMOCC

*See Instructions On Reverse Side

/s/ J. Stan McKee

AREA MANAGER

OIL CONSERVATION DIVISION

STATE OF NEW MEXICO
ENERGY AND MINERALS DEPARTMENTP. O. BOX 2088
SANTA FE, NEW MEXICO 87501Form C-102
Revised 10-1-79

All distances must be from the outer boundaries of the Section.

Operator MALLON OIL			Lease JICARILLA 435G		Well No. 1
Unit Letter F	Section 9	Township 22 North	Range 4 West	County Sandoval	
Actual Footage Location of Well: (cardinal) 1850 feet from the North line and 1850 feet from the West line					
Ground Level Elev. 6840	Producing Formation Gallup	Pool Otero-Sanostee Undes. Gallup 48640 Ext		Dedicated Acreage: 40 Acres	

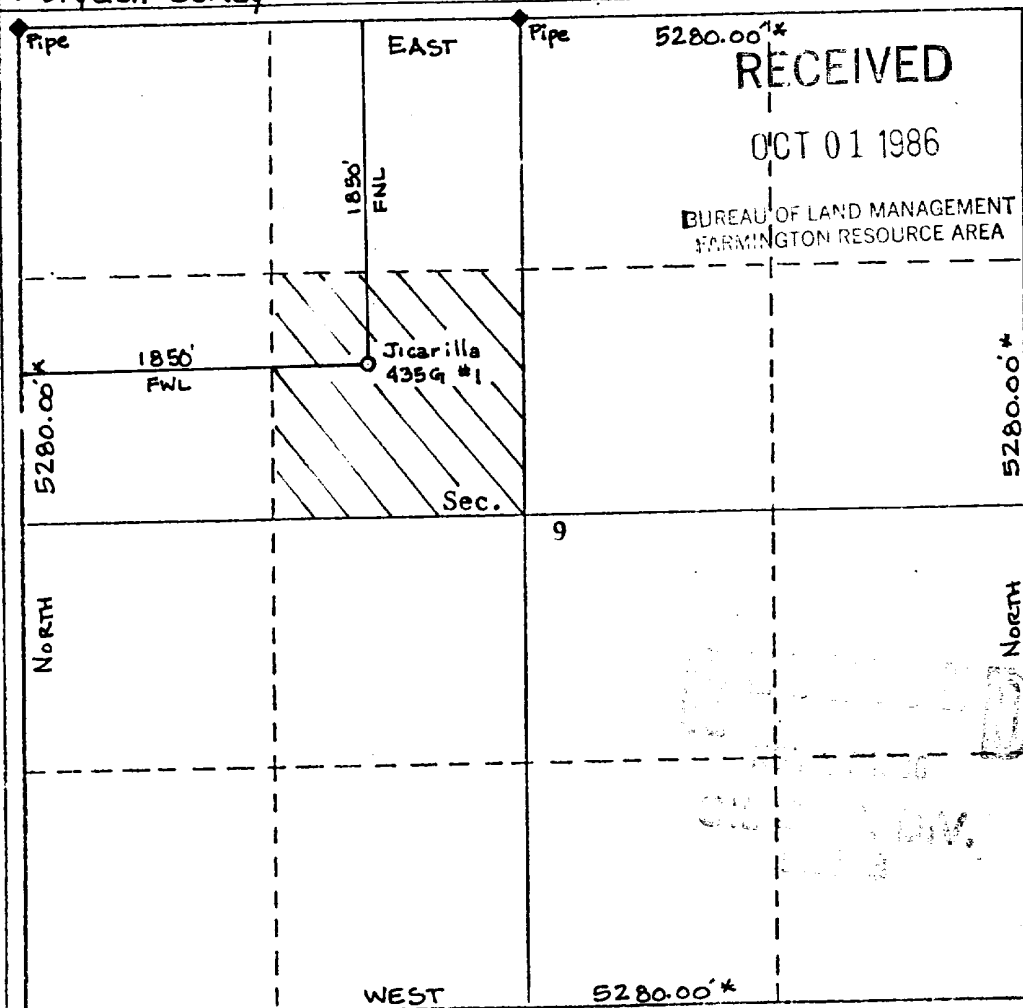
1. Outline the acreage dedicated to the subject well by colored pencil or hatchure marks on the plat below.
2. If more than one lease is dedicated to the well, outline each and identify the ownership thereof (both as to working interest and royalty).
3. If more than one lease of different ownership is dedicated to the well, have the interests of all owners been consolidated by communitization, unitization, force-pooling, etc?

☐ Yes ☐ No If answer is "yes," type of consolidation _____

If answer is "no," list the owners and tract descriptions which have actually been consolidated. (Use reverse side of this form if necessary.) _____

No allowable will be assigned to the well until all interests have been consolidated (by communitization, unitization, forced-pooling, or otherwise) or until a non-standard unit, eliminating such interests, has been approved by the Division.

* Dryden Survey



CERTIFICATION

I hereby certify that the information contained herein is true and complete to the best of my knowledge and belief.

Kevin H. McCord
Name

Kevin H. McCord

Position

Agent

Company

Mallon Oil Company

Date

I hereby certify that the well location shown on this plat was plotted from field notes of actual surveys made by me or under my supervision, and that the same is true and correct to the best of my knowledge.

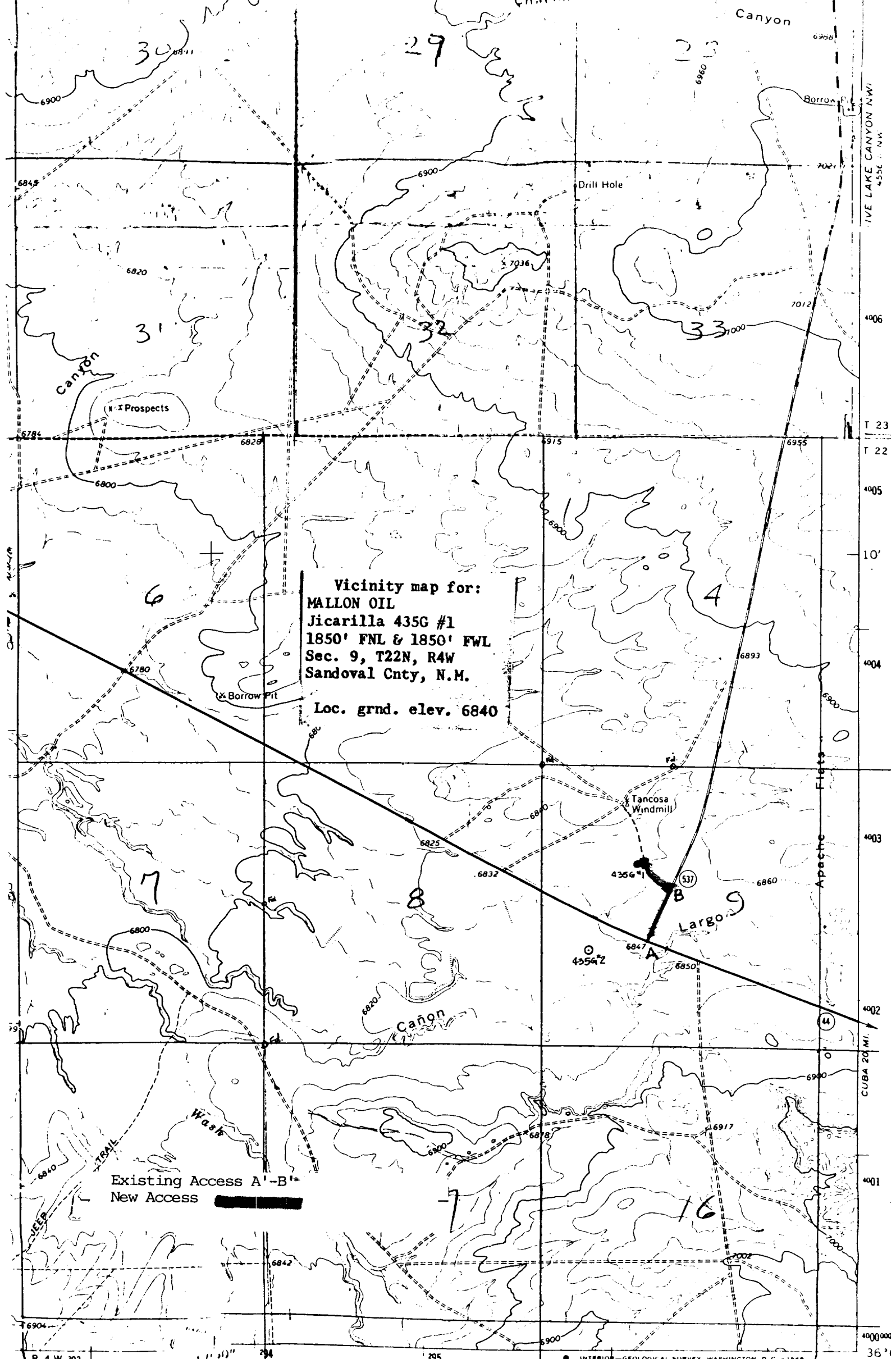
Date Surveyed **8894**

Sept. 23, 1986

Registered Professional Engineer and/or Licensed Surveyor

Certificate No.

8894



Vicinity map for:
MALLON OIL
Jicarilla 435G #1
1850' FNL & 1850' FWL
Sec. 9, T22N, R4W
Sandoval Cnty, N.M.
Loc. grnd. elev. 6840

Existing Access A-B
New Access

ROAD CLASSIFICATION

Heavy duty Light duty

R. 4 W. 293

1 Mile

6000 7000 FEET

INTERIOR - GEOLOGICAL SURVEY WASHINGTON D. C. - 1948

297000m E

107° 15'

36° 1

MALTON OIL
 Jicarilla 435G #1
 1850' FNL & 1850' FWL
 Sec. 9, T22N, R4W
 Sandoval Cnty, N.M.

Loc. Grnd. elev. 6840

Paved 0.2 Gravel & dirt Trails New access 0.15

Begin at equivalent mile marker 85.4 on NM44 (+ 79 miles from Farmington, N.M.)
 at intersection of NM44 & NM 537 (@ tips)

DIRECTION	DISTANCE (+)	ROAD TYPE & COMMENTS	DESCRIPTION (PT);
Northerly	0.2 mi	paved (NM 537)	@ trail w/gate to windmill (B);
Turn left westerly	0.15 mi	2 track trail & cross country	@ staked location - MALTON Jicarilla 435G #1.