

30-043-20810

Form 3160-3
(November 1983)
(formerly 9-331C)

SUBMIT IN TRIPLICATE*
(Other instructions on
reverse side)

Form approved.
Budget Bureau No. 1004-0136
Expires August 31, 1985

UNITED STATES
DEPARTMENT OF THE INTERIOR
BUREAU OF LAND MANAGEMENT

APPLICATION FOR PERMIT TO DRILL, DEEPEN, OR PLUG BACK

1a. TYPE OF WORK
DRILL ☒ DEEPEN ☐ PLUG BACK ☐
b. TYPE OF WELL
OIL WELL ☒ GAS WELL ☐ OTHER ☐
SINGLE ZONE ☒ MULTIPLE ZONE ☐

2. NAME OF OPERATOR
Mallon Oil Company

3. ADDRESS OF OPERATOR
2850 Security Life Building, Denver, CO 80202

4. LOCATION OF WELL (Report location clearly and in accordance with any State requirements)
At surface 1750' FSL & 890' FWL
At proposed prod. zone same

14. DISTANCE IN MILES AND DIRECTION FROM NEAREST TOWN OR POST OFFICE*
BUREAU OF LAND MANAGEMENT
FARMINGTON RESOURCE AREA

15. DISTANCE FROM PROPOSED* LOCATION TO NEAREST PROPERTY OR LEASE LINE, FT. (Also to nearest drlg. unit line, if any)
16. NO. OF ACRES IN LEASE
2492

18. DISTANCE FROM PROPOSED LOCATION* TO NEAREST WELL, DRILLING, COMPLETED, OR APPLIED FOR, ON THIS LEASE, FT.
19. PROPOSED DEPTH
6060'

21. ELEVATIONS (Show whether DF, RT, GR, etc.)
6838' GL 6851' RKB
DRILLING OPERATIONS AUTHORIZED ARE SUBJECT TO COMPLIANCE WITH ATTACHED "GENERAL REQUIREMENTS"

23. PROPOSED CASING AND CEMENTING PROGRAM

SIZE OF HOLE	SIZE OF CASING	WEIGHT PER FOOT	SETTING DEPTH	QUANTITY OF CEMENT
12 1/4"	8-5/8"	24#/ft	200'	207 ft ³ Class B w/2% CaCl ₂
7-7/8"	4 1/2"	10.5#/ft	6060'	2037 ft ³ Class B w/2% D-79

Will drill 12 1/4" surface hole to 200' and set 200' 8-5/8" 24#/ft J-55 casing cementing with 207 ft³ Class B w/2% CaCl₂. Will drill 7-7/8" hole to 6060'. Will run Induction and Density Logs and if well appears productive, will run 6060' 4 1/2" 10.5#/ft J-55 casing and stage cement. 1st: 535 ft³ (425 sx) 50-50 pozmix w/2% gel to cover Gallup interval from TD. Estimated top of cement is 5000'. Will set stage collar at approx. 4671', below Pt. Lookout formation. 2nd: 1442 ft³ Class B 25 D-79 (700 sx) followed by 60 ft³ 50-50 pozmix w/2% gel (48 sx) to cover Mesaverde, Chacra, P.C., Fruitland & Ojo Alamo. Top of cement will be at surface. Circulating medium will be clear water, natural mud, and water loss control additives. No abnormal pressures or temperatures are anticipated. Blowout preventer schematic is attached. The gas from this formation is dedicated. Will perforate and stimulate as required for completion.

ESTIMATED TOPSD: Ojo Alamo - 1600' Gallup - 4915'
Pictured Cliffs - 1988' T.D. - 6060'
Pt. Lookout - 4113'

IN ABOVE SPACE DESCRIBE PROPOSED PROGRAM: If proposal is to deepen or plug back, give data on present productive zone and proposed new productive zone. If proposal is to drill or deepen directionally, give pertinent data on subsurface locations and measured and true vertical depths. Give blowout preventer program, if any.

24. SIGNED Lulu Burger TITLE Agent DATE 9-30-86

(This space for Federal or State office use)

PERMIT NO. _____ APPROVAL DATE _____

APPROVED BY _____ TITLE _____ DATE NOV 13 1986
CONDITIONS OF APPROVAL, IF ANY:

NMOCC

*See Instructions On Reverse Side

APPROVED
AS AMENDED

7/8 J. Stan McKee

for AREA MANAGER

OIL CONSERVATION DIVISION

STATE OF NEW MEXICO
ENERGY AND MINERALS DEPARTMENT

P. O. BOX 2088
SANTA FE, NEW MEXICO 87501

Form C-102
Revised 10-1-79

All distances must be from the outer boundaries of the Section.

Operator MALLON OIL			Lease JICARILLA 435G		Well No. 2
Unit Letter L	Section 9	Township 22 North	Range 4 West	County Sandoval	
Actual Footage Location of Well: (cardinal)					
1750 feet from the South		Line and	890 feet from the West	Line	
Ground Level Elev. 6938	Producing Formation Gallup	Pool dryden-Sandoval Under Gallup EXT		Dedicated Acreage: 40 Acres	

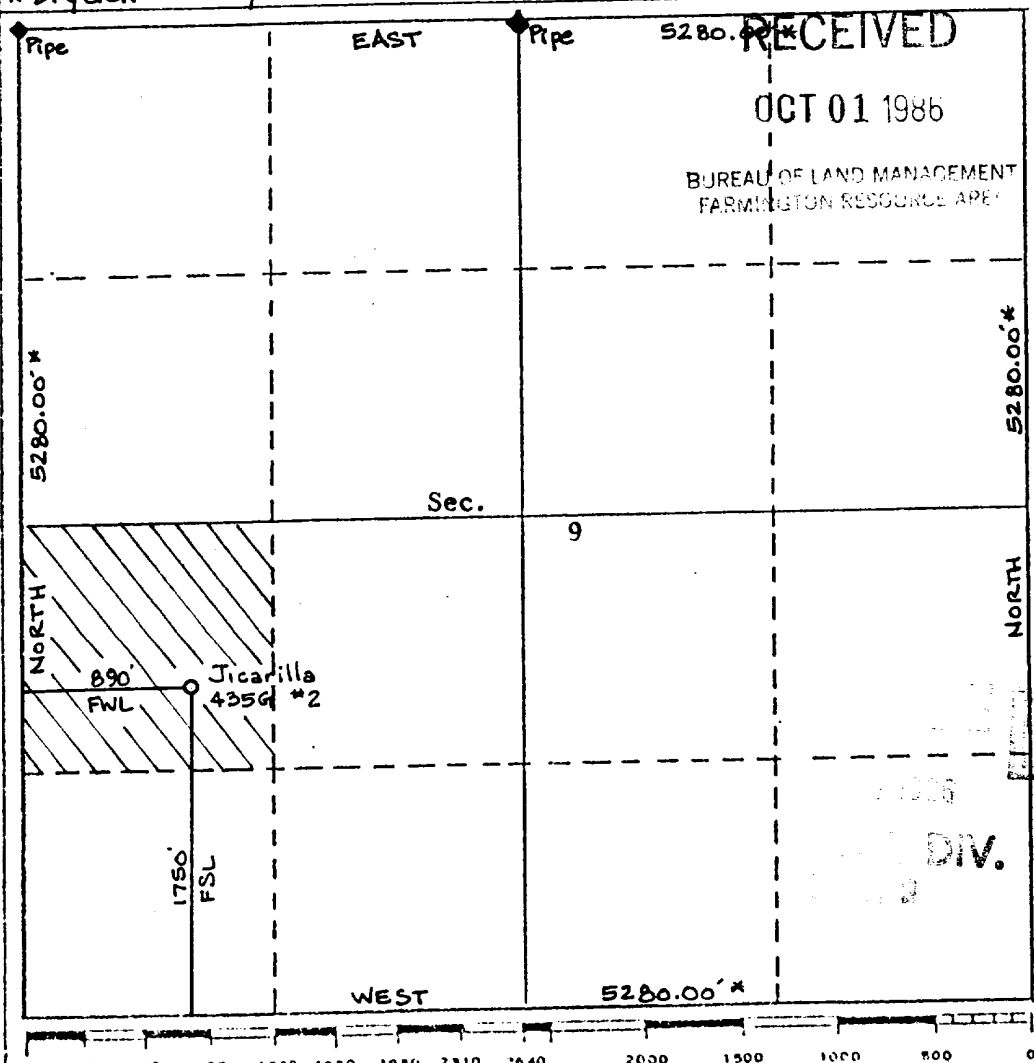
1. Outline the acreage dedicated to the subject well by colored pencil or hatchure marks on the plat below.
2. If more than one lease is dedicated to the well, outline each and identify the ownership thereof (both as to working interest and royalty).
3. If more than one lease of different ownership is dedicated to the well, have the interests of all owners been consolidated by communitization, unitization, force-pooling, etc?

☐ Yes ☐ No If answer is "yes," type of consolidation _____

If answer is "no," list the owners and tract descriptions which have actually been consolidated. (Use reverse side of this form if necessary.) _____

No allowable will be assigned to the well until all interests have been consolidated (by communitization, unitization, forced-pooling, or otherwise) or until a non-standard unit, eliminating such interests, has been approved by the Division.

*Dryden Survey



CERTIFICATION

I hereby certify that the information contained herein is true and complete to the best of my knowledge and belief.

Kevin H. McCord
Name

Kevin H. McCord

Position

Agent

Company

Mallon Oil Company

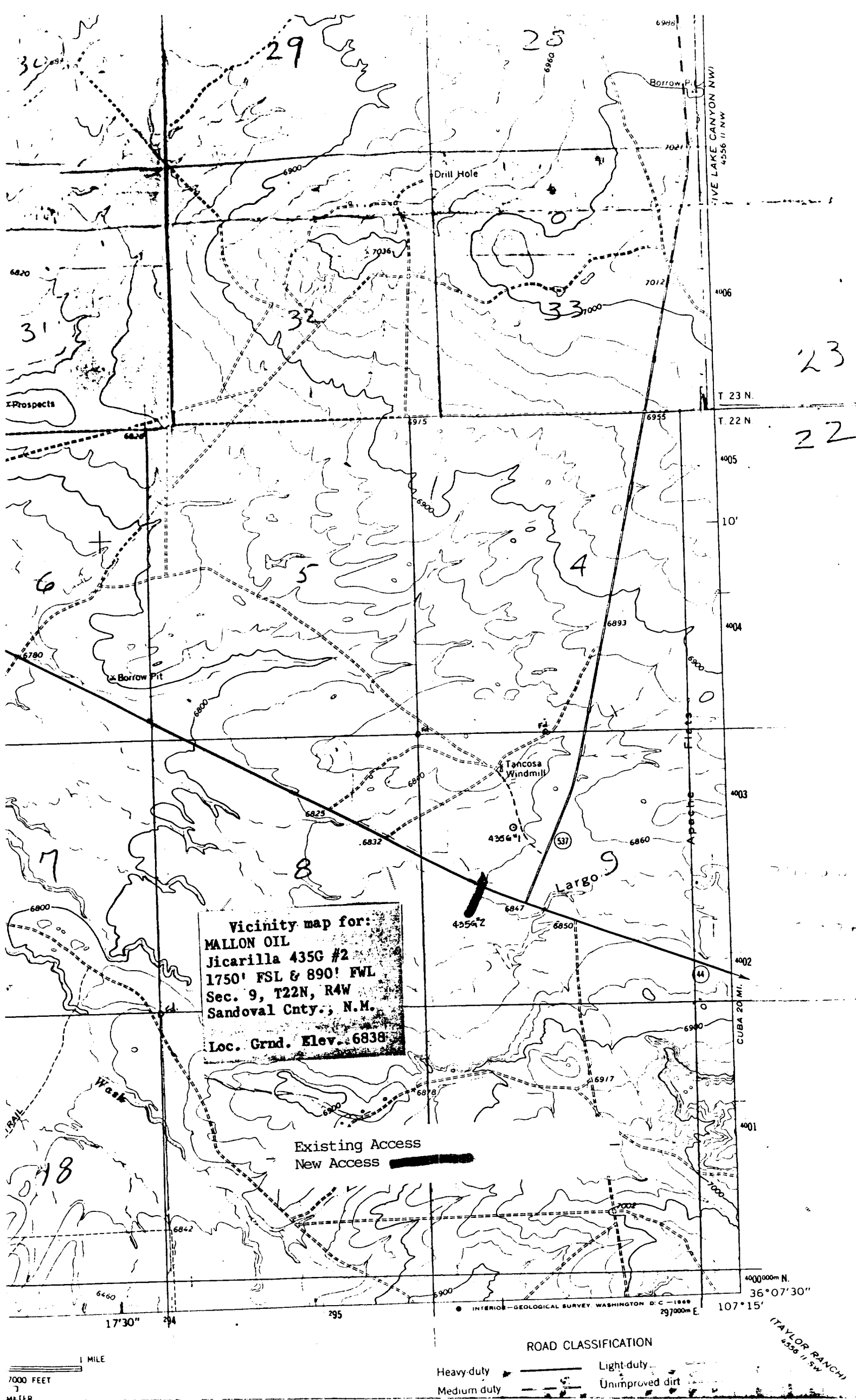
Date

I hereby certify that the well location shown on this plat was plotted from field notes of actual surveys made by me or under my supervision, and that the same is true and correct to the best of my knowledge and belief.

Date Surveyed
Sept. 23, 1989
Roy A. Rush
Professional Engineer
and Land Surveyor

Certificate No.

8894



MALTON OIL
 Jicarilla 435G #2
 1750' FSL & 890' FWL
 Roadway description to: Sec. 9, T22N, R4W
 Sandoval Cnty., N.M.
 Loc. Grnd. Elev. 6838

Paved	Gravel & dirt	Trails	New access	+ 150'
Begin at equivalent mile marker 85.1 on NM 44 (+ 79 miles from Farmington, N.M.)				
at point on Hwy. opposite "H" panel in fence on				
South side of NM 44				
DIRECTION	DISTANCE (+)	ROAD TYPE & COMMENTS	DESCRIPTION (PT);	(A);

Southerly + 150 ft cross country through fence (need cttl. rd.) @ staked location MALTON - Jicarilla 435G #2.