

UNITED STATES  
DEPARTMENT OF THE INTERIOR  
GEOLOGICAL SURVEY

30-043-20825

## APPLICATION FOR PERMIT TO DRILL, DEEPEN, OR PLUG BACK

## 1a. TYPE OF WORK

DRILL ☒DEEPEN ☐PLUG BACK ☐

## b. TYPE OF WELL

OIL  
WELL ☒GAS  
WELL ☐

OTHER

SINGLE  
ZONE ☒MULTIPLE  
ZONE ☐

## 2. NAME OF OPERATOR

BCO, Inc.

## 3. ADDRESS OF OPERATOR

135 Grant, Santa Fe, NM 87501

## 4. LOCATION OF WELL (Report location clearly and in accordance with any State requirements.)\*

At surface

490' FSL &amp; 1765' FEL

At proposed prod. zone

## 14. DISTANCE IN MILES AND DIRECTION FROM NEAREST TOWN OR POST OFFICE\*

approx. 2 1/2 miles SW of Lybrook, NM

## 15. DISTANCE FROM PROPOSED\*

LOCATION TO NEAREST  
PROPERTY OR LEASE LINE, FT.  
(Also to nearest drlg. unit line, if any)

490'

## 16. NO. OF ACRES IN LEASE

400 more or less

17. NO. OF ACRES ASSIGNED  
TO THIS WELL

40

## 18. DISTANCE FROM PROPOSED LOCATION\*

TO NEAREST WELL, DRILLING, COMPLETED,  
OR APPLIED FOR, ON THIS LEASE, FT.

2945' from

Federal L #2

## 19. PROPOSED DEPTH

5387'

## 20. ROTARY OR CABLE TOOLS

Rotary

## 21. ELEVATIONS (Show whether DF, RT, GR, etc.)

6930' GL

DRILLING OPERATIONS AUTHORIZED ARE  
SUBJECT TO COMPLIANCE WITH ATTACHED

## 22. APPROX. DATE WORK WILL START\*

ASAP

## 23.

PROPOSED CASING AND CEMENTING PROGRAM

This action is subject to technical and  
procedural review pursuant to 43 CFR 3155.3  
and appeal pursuant to 43 CFR 3155.4.

SIZE OF HOLE	SIZE OF CASING	WEIGHT PER FOOT	SETTING DEPTH	QUANTITY OF CEMENT
12-1/4"	8-5/8"	23#	200'	190 cf circ. to surface
7-7/8"	4-1/2"	11.6#	5387'	2165 cf circ. to surface

Plan to drill a 12-1/4" hole and set 200' of 8-5/8" OD, 23#, new surface casing; then plan to drill a 7-7/8" hole to total depth with gel-water-mud program to test Gallup formation. Plan to run IES and CDL logs. If determined productive, will run 4-1/2", 11.6#, new J-55 casing, selectively perforate, frac, clean out after frac and complete well.

IN ABOVE SPACE DESCRIBE PROPOSED PROGRAM: If proposal is to deepen or plug back, give data on present productive zone and proposed new productive zone. If proposal is to drill or deepen directionally, give pertinent data on subsurface locations and measured and true vertical depths. Give blowout preventer program, if any.

24.

SIGNED

Elizabeth B. Keeshan

TITLE

Vice President

DATE

5-6-88

(This space for Federal or State office use)

PERMIT NO.

APPROVAL DATE

APPROVED BY

TITLE

DATE

CONDITIONS OF APPROVAL, IF ANY:

\*See Instructions On Reverse Side

All distances must be from the outer boundaries of the Section.

Operator BCO, Inc.		Lease Federal		Well No. L-1	
Unit Letter 0	Section 28	Township 23 North	Range 7 West	County Sandoval	
Actual Footage Location of Well: 490 feet from the South line and 1765 feet from the East line					
Ground Level Elev. 6930	Producing Formation Gallup	Pool Alamito Gallup EXT	Dedicated Acres 40 Acres		

1. Outline the acreage dedicated to the subject well by colored pencil or hatchure marks on the plat below.
2. If more than one lease is dedicated to the well, outline each and identify the ownership thereof (both as to working interest and royalty).
3. If more than one lease of different ownership is dedicated to the well, have the interests of all owners been consolidated by communitization, unitization, force-pooling, etc?

☐ Yes ☐ No If answer is "yes," type of consolidation \_\_\_\_\_

If answer is "no," list the owners and tract descriptions which have actually been consolidated. (Use reverse side of this form if necessary.) \_\_\_\_\_

No allowable will be assigned to the well until all interests have been consolidated (by communitization, unitization, forced-pooling, or otherwise) or until a non-standard unit, eliminating such interests, has been approved by the Division.

RECEIVED  
OIL MAIL ROOM  
68 MAY -6 PM 2:48  
FARMINGTON, NEW MEXICO

SECTION 28

BCO, Inc.  
NM-58878

490'

1765'

RECEIVED  
MAY 1 1988  
OIL CON. DIV.  
DIST. 3

CERTIFICATION

I hereby certify that the information contained herein is true and complete to the best of my knowledge and belief.

Elizabeth B. Keeshan

Name

Elizabeth B. Keeshan

Position

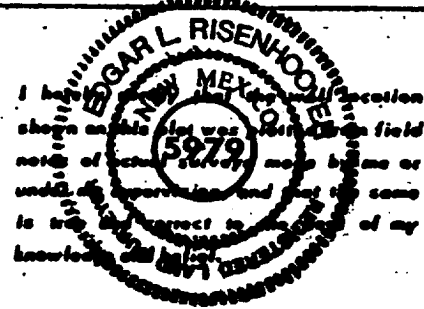
Vice-President

Company

BCO, Inc.

Date

5-6-88



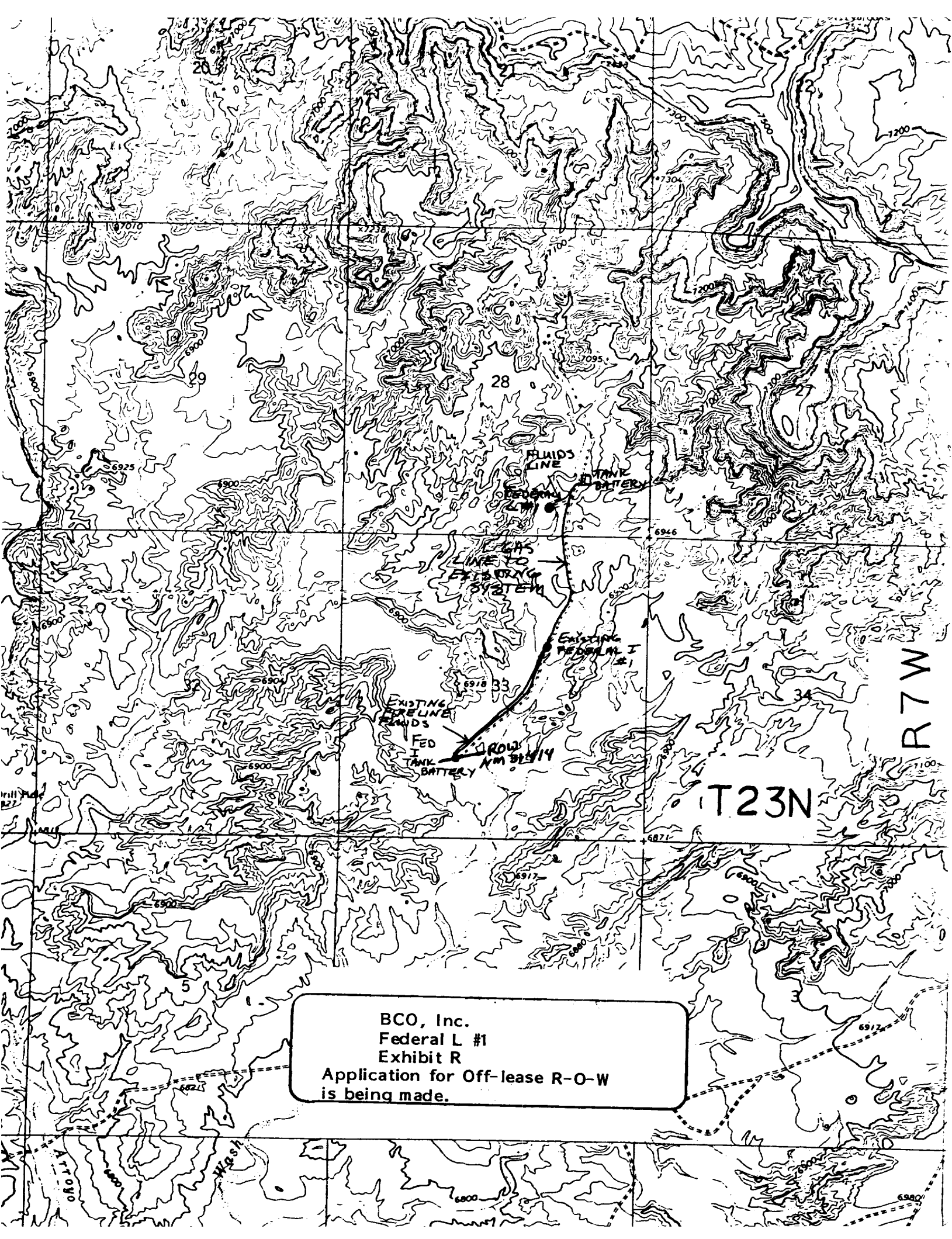
Date Surveyed

April 4, 1988

Registered Professional Engineer  
and/or Land Surveyor

Edgar L. Risenhofer

Certificate No. 5979



BCO, Inc.  
Federal L #1  
Exhibit R  
Application for Off-lease R-O-W  
is being made.