

(November 1983)
(formerly 9-331C)

13089 Prop

UNITED STATES
DEPARTMENT OF THE INTERIOR

BUREAU OF LAND MANAGEMENT

SUBMIT IN TRIPLICATE*
(Other instructions on
reverse side)

Form approved.
Budget Bureau No. 1004-0136
Expires August 31, 1985

APPLICATION FOR PERMIT TO DRILL, DEEPEN, OR PLUG BACK

1a. TYPE OF WORK

DRILL ☒

DEEPEN ☐

PLUG BACK ☐

b. TYPE OF WELL

OIL
WELL ☒

GAS
WELL ☐

OTHER ☐

SINGLE
ZONE ☒

MULTIPLE
ZONE ☐

2. NAME OF OPERATOR

Yates Petroleum Corporation

(505) 748-1471

3. ADDRESS OF OPERATOR

105 South 4th St., Artesia, NM 88210

4. LOCATION OF WELL (Report location clearly and in accordance with any State requirements.)*

At surface

1980' FNL & 1980' FEL

At proposed prod. zone

Same

14. DISTANCE IN MILES AND DIRECTION FROM NEAREST TOWN OR POST OFFICE*

4 air miles SE of Counselor, NM

10. DISTANCE FROM PROPOSED*

LOCATION TO NEAREST
PROPERTY OR LEASE LINE, FT.
(Also to nearest drlg. unit line, if any)

1980'

18. DISTANCE FROM PROPOSED LOCATION*

TO NEAREST WELL, DRILLING, COMPLETED,
OR APPLIED FOR, ON THIS LEASE, FT.

N/A

16. NO. OF ACRES IN LEASE

2124.67

17. NO. OF ACRES ASSIGNED
TO THIS WELL

40

19. PROPOSED DEPTH

5,700'

20. ROTARY OR CABLE TOOL

Rotary

21. ELEVATIONS (Show whether DF, RT, GR, etc.)

7,164' ungraded ground

Aug. 28, 1993

PROPOSED CASING AND CEMENTING PROGRAM

SIZE OF HOLE	SIZE OF CASING	WEIGHT PER FOOT	SETTING DEPTH
12-1/4"	8-5/8"	24# (K-55)	250'
7-7/8"	4-1/2"	10.5# (K-55)	5,700'
	5 1/2"	15.5# (K-55)	

DRILLING OPERATIONS AUTHORIZED ARE
SUBJECT TO CONDITIONS ATTACHED
GENERAL REQUIREMENTS
100 sx and to surface
825 sx and to surface
500 1092
115 11 1/2"

APD is also serving as a road right-of-way amendment application. Wish to amend BLM right-of-way NM-80860 (originally issued for access to Yates Petroleum Corporation's Gus XW State #1 well; NWNE 32-23n-6w). Amendment is for proposed 25' wide by ≈2,000' long road on-lease in W2NE4 & NENE 5-22n-6w, Sandoval County, NM

RECEIVED

AUG 26 1993

cc: Beardemphl (3), BLM (3 + 2 for OCD)

IN ABOVE SPACE DESCRIBE PROPOSED PROGRAM: If proposal is to deepen or plug back, give data on present productive zone and proposed new productive zone. If proposal is to drill or deepen directionally, give pertinent data on subsurface locations and measured and true vertical depths. Give blowout preventer program, if any.

SIGNED

TITLE

Consultant

DATE

8-3-93

(This space for Federal or State office use)

PERMIT NO.

APPROVAL DATE

APPROVED
AS AMENDED

APPROVED BY

TITLE

AUG 24 1993

CONDITIONS OF APPROVAL, IF ANY:

NMOCD

DISTRICT MANAGER

*See Instructions On Reverse Side

Title 18 U.S.C. Section 1001, makes it a crime for any person knowingly and willfully to make to any department or agency of the United States any false, fictitious or fraudulent statements or representations as to any matter within its jurisdiction

OIL CONSERVATION DIVISION

P.O. Box 2088
Santa Fe, New Mexico 87504-2088

RECEIVED
BLM

93 AUG -4 PM 3:38

070 FARMINGTON, NM

DISTRICT I
P.O. Box 1980, Hobbs, NM 88240

DISTRICT II
P.O. Drawer DD, Artesia, NM 88210

DISTRICT III
1000 Rio Brazos Rd., Aztec, NM 87410

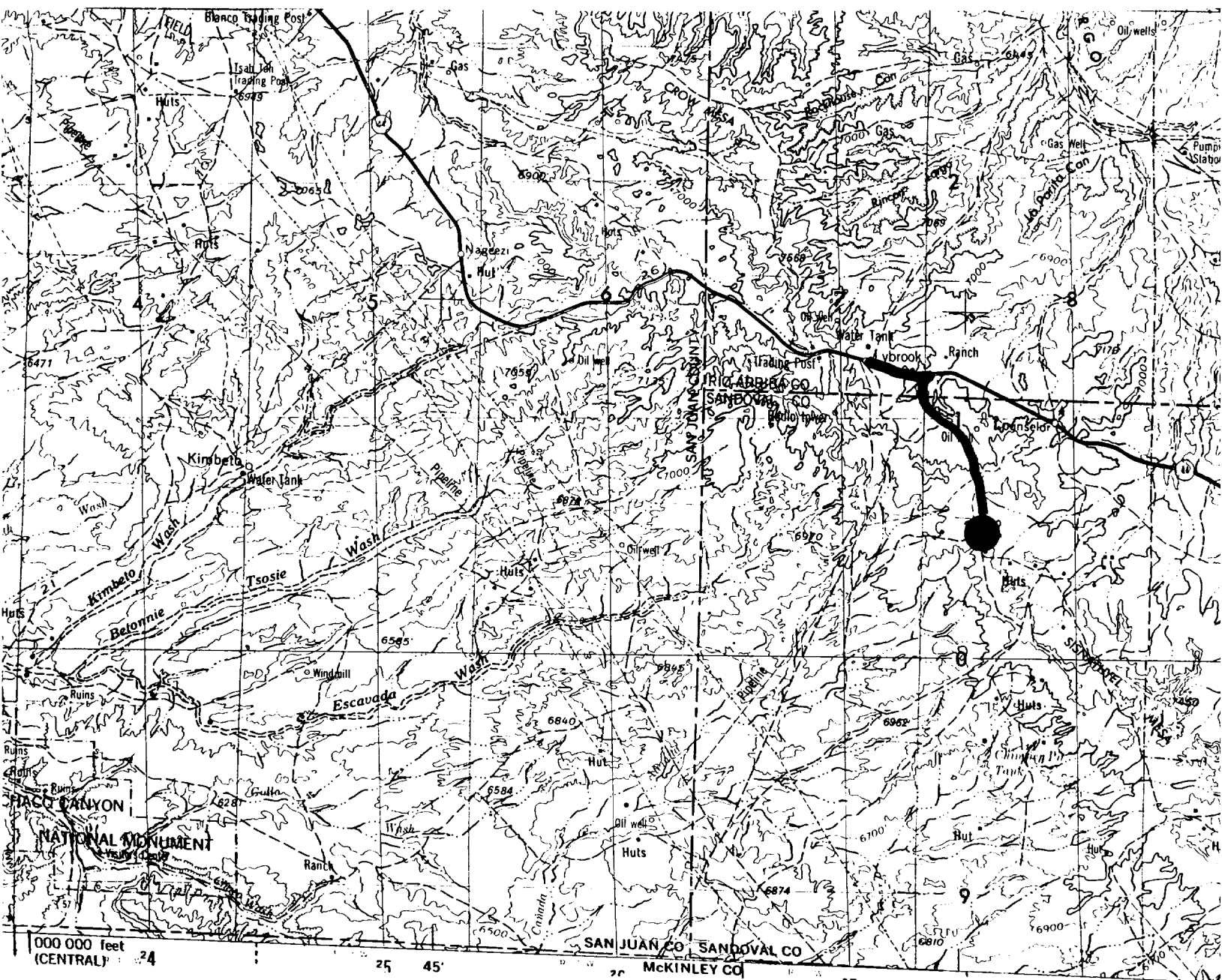
WELL LOCATION AND ACREAGE DEDICATION PLAT

All Distances must be from the outer boundaries of the section

Operator YATES PETROLEUM CORP.			Lease HUSTON "ANS" FEDERAL # 1		
Unit Letter G	Section 5	Township 22 N.	Range 6 W.	County SANDOVAL	
Actual Footage Location of Well: 1980 feet from the NORTH line and 1980 feet from the EAST					
Ground level Elev. 7164'	Producing Formation Gallup		Pool Lybrook-Gallup Ext.	Dedicated Acreage: 40 Acres	
<p>1. Outline the acreage dedicated to the subject well by colored pencil or hatchure marks on the plat below.</p> <p>2. If more than one lease is dedicated to the well, outline each and identify the ownership thereof (both as to working interest and royalty).</p> <p>3. If more than one lease of different ownership is dedicated to the well, have the interest of all owners been consolidated by communitization, unitization, force-pooling, etc.? <input type="checkbox"/> Yes <input type="checkbox"/> No If answer is "yes" type of consolidation _____</p> <p>If answer is "no" list the owners and tract descriptions which have actually been consolidated. (Use reverse side of this form if necessary.) _____</p> <p>No allowable will be assigned to the well until all interests have been consolidated (by communitization, unitization, forced-pooling, or otherwise) or until a non-standard unit, eliminating such interest, has been approved by the Division.</p>					
				OPERATOR CERTIFICATION I hereby certify that the information contained herein is true and complete to the best of my knowledge and belief. Signature <i>Brian Wood</i> Printed Name Brian Wood Position Consultant Company Petroleum Corporation Date August 3, 1993	
				SURVEYOR CERTIFICATION I hereby certify that the well location shown on this plat was plotted from field notes of actual surveys made by me or under my supervision, and that the same is true and correct to the best of my knowledge and belief. Date Surveyed 30 June 1993 Signature <i>[Signature]</i> Professional Surveyor NEW MEXICO 6844 Certificate No. RED LAND SURV 6892	

Yates Petroleum Corporation
Huston ANS Federal #1
1980 FNL & 1980' FEL
Sec. 5, T. 22 N., R. 6 W.
Sandoval County, NM

PAGE 11



Wellsite: ●

Access Route: ~