

UNITED STATES
DEPARTMENT OF THE INTERIOR
BUREAU OF LAND MANAGEMENT

SUBMIT IN TRIPLICATE*
(Other instructions on
reverse side)

Form approved.
Budget Bureau No. 1004-0136
Expires: December 31, 1991

APPLICATION FOR PERMIT TO DRILL OR DEEPEN

1a. TYPE OF WORK

DRILL ☒

DEEPEN ☐

010 ALBUQUERQUE, N.M.

b. TYPE OF WELL

OIL WELL ☒

GAS WELL ☐

OTHER

SINGLE ZONE ☒

MULTIPLE ZONE ☐

2. NAME OF OPERATOR

A.J. (Sonny) Longo d/b/a SOUTHEASTERN PETROLEUM INC.

3. ADDRESS AND TELEPHONE NO.

1601 East 2nd Street, Roswell, N.M. 88201, 1-505-625-0204

4. LOCATION OF WELL (Report location clearly and in accordance with any State requirements.)*

At surface 1910.0 ft.; 1463.8 ft. FWL (NWSENW)

FNL 1464

At proposed prod. zone VERTICAL to 275 ft. deep

14. DISTANCE IN MILES AND DIRECTION FROM NEAREST TOWN OR POST OFFICE*

27 miles, South/west of the Town of Cuba, NM

15. DISTANCE FROM PROPOSED* LOCATION TO NEAREST PROPERTY OR LEASE LINE, FT.
(Also to nearest drilg. unit line, if any)

152 ft. F/W/4 line
152 ft. F/W/4 line
Unit line

16. NO. OF ACRES IN LEASE
200

18. DISTANCE FROM PROPOSED LOCATION* TO NEAREST WELL, DRILLING, COMPLETED, OR APPLIED FOR, ON THIS LEASE, FT.

NONE

19. PROPOSED DEPTH
314 ft

17. NO. OF ACRES ASSIGNED TO THIS WELL
Jointly-with other wells not drilled yet

20. ROTARY OR CABLE TOOLS
Rotary

21. ELEVATIONS (Show whether DF, RT, GR, etc.)

Gr. 6414

22. APPROX. DATE WORK WILL START*

April 29 1993

23.

PROPOSED CASING AND CEMENTING PROGRAM

SIZE OF HOLE	GRADE SIZE OF CASING	WEIGHT PER FOOT	SETTING DEPTH	QUANTITY OF CEMENT
10 5/8 in.	J55-8 5/8 in.	24#	25 ft.	5 sacks to surface
6 3/4 in.	J55-4 1/2 in.	9.5#	314 ft.	38 sacks to surface

Drilling fluid will be Bentonite Mud

A blowout preventer will be used, which will be a B.O.P. Hy-Drill unit with a 2000 # system.

All choke valves and lines will be 2" minimum.

The 2000# system will be maintained in accordance with all requirements specified in Section III. A1 of onshore order 2, except where variations are presented in this application.

RECEIVED
JUL 1 1993
OIL CON. DIV.

RECEIVED
MAY 20 1993
OIL CON. DIV.

AUG 10 1993

OIL CON. DIV.

OIL CON. DIV.

OIL CON. DIV.

APPROVAL AND DESCRIPTION OF PROPOSED PROGRAM: If proposal is to deepen, give data on present productive zone and proposed new productive zone. If proposal is to drill or deepen directionally, give pertinent data on subsurface locations and measured and true vertical depths. Give blowout preventer program, if any.

A.J. Sonny Longo
Operator for Southeastern Pet. Inc.

TITLE OPERATOR

April 7, 1993

(This space for Federal or State office use)

PERMIT NO.

APPROVAL DATE

Application approval does not warrant or certify that the applicant holds legal or equitable title to those rights in the subject lease which would entitle the applicant to conduct operations thereon.

CONDITIONS OF APPROVAL, IF ANY:

C-104 For New C-102 DIST. 3

APPROVED BY:

SHIRLEY MONDY

TITLE

Acting AREA MANAGER

RIO PUERCO RESOURCE AREA

DATE

MAY 17 1993

*See Instructions On Reverse Side

OIL CONSERVATION DIVISION

P.O. Box 2088
Santa Fe, New Mexico 87504-2088

EXHIBIT "A"

DISTRICT I
P.O. Box 1980, Hobbs, NM 88240

DISTRICT II
P.O. Drawer DD, Artesia, NM 88210

DISTRICT III
1000 Rio Brazos Rd., Aztec, NM 87410

WELL LOCATION AND ACREAGE DEDICATION PLAT

All Distances must be from the outer boundaries of the section

Operator Southeastern Petroleum Lease 1306 CAT Well No. 2
Unit Letter F Section 4 Township 17N Range 3W County SANDOVAL
Actual Footage Location of Well:

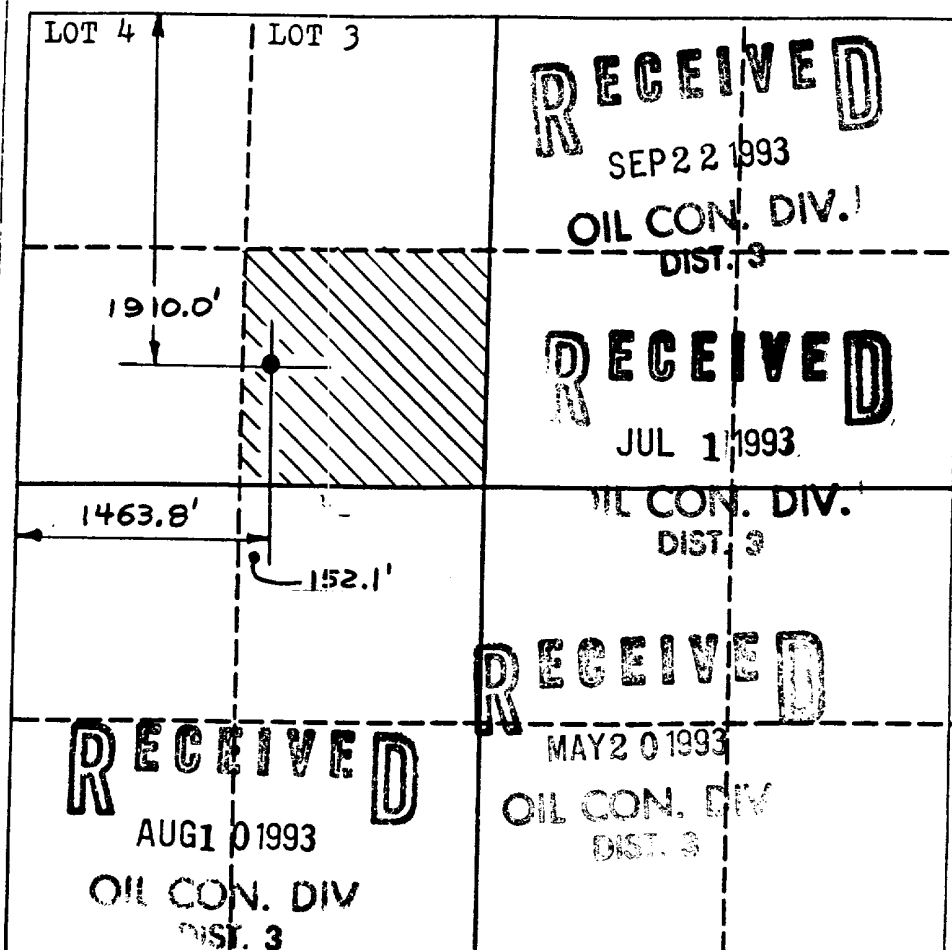
1910.0 feet from the NORTH line and 1463.8 feet from the WEST line
Ground level Elev. 6414 Producing Formation MESAVERDE Pool SOUTH SAN LUIS-MESAVERDE Dedicated Acreage: 40 acres joint
not drilled yet

- Outline the acreage dedicated to the subject well by colored pencil or hatchure marks on the plat below.
- If more than one lease is dedicated to the well, outline each and identify the ownership thereof (both as to working interest and royalty).
- If more than one lease of different ownership is dedicated to the well, have the interest of all owners been consolidated by communitization, unitization, force-pooling, etc.?

☒ Yes ☐ No If answer is "yes" type of consolidation ONE OWNERSHIP

If answer is "no" list the owners and tract descriptions which have actually been consolidated. (Use reverse side of this form if necessary.)

No allowable will be assigned to the well until all interests have been consolidated (by communitization, unitization, forced-pooling, or otherwise) or until a non-standard unit, eliminating such interest, has been approved by the Division.



OPERATOR CERTIFICATION

I hereby certify that the information contained herein is true and complete to the best of my knowledge and belief.

Signature Charles M. Goad
Printed Name CHARLES M. GOAD

Position OPERATOR

Company d/b/a GOLA OIL CO.

Date MARCH 18, 1993

SURVEYOR CERTIFICATION

I hereby certify that the well location shown on this plat was plotted from field notes of actual surveys made by me or under my supervision, and that the same is true and correct to the best of my knowledge and belief.

Date Surveyed MARCH 4, 1993

Signature & Seal of Professional Surveyor
KEITH L. STICKFORD
N.M.P.S. 19914
PROFESSIONAL

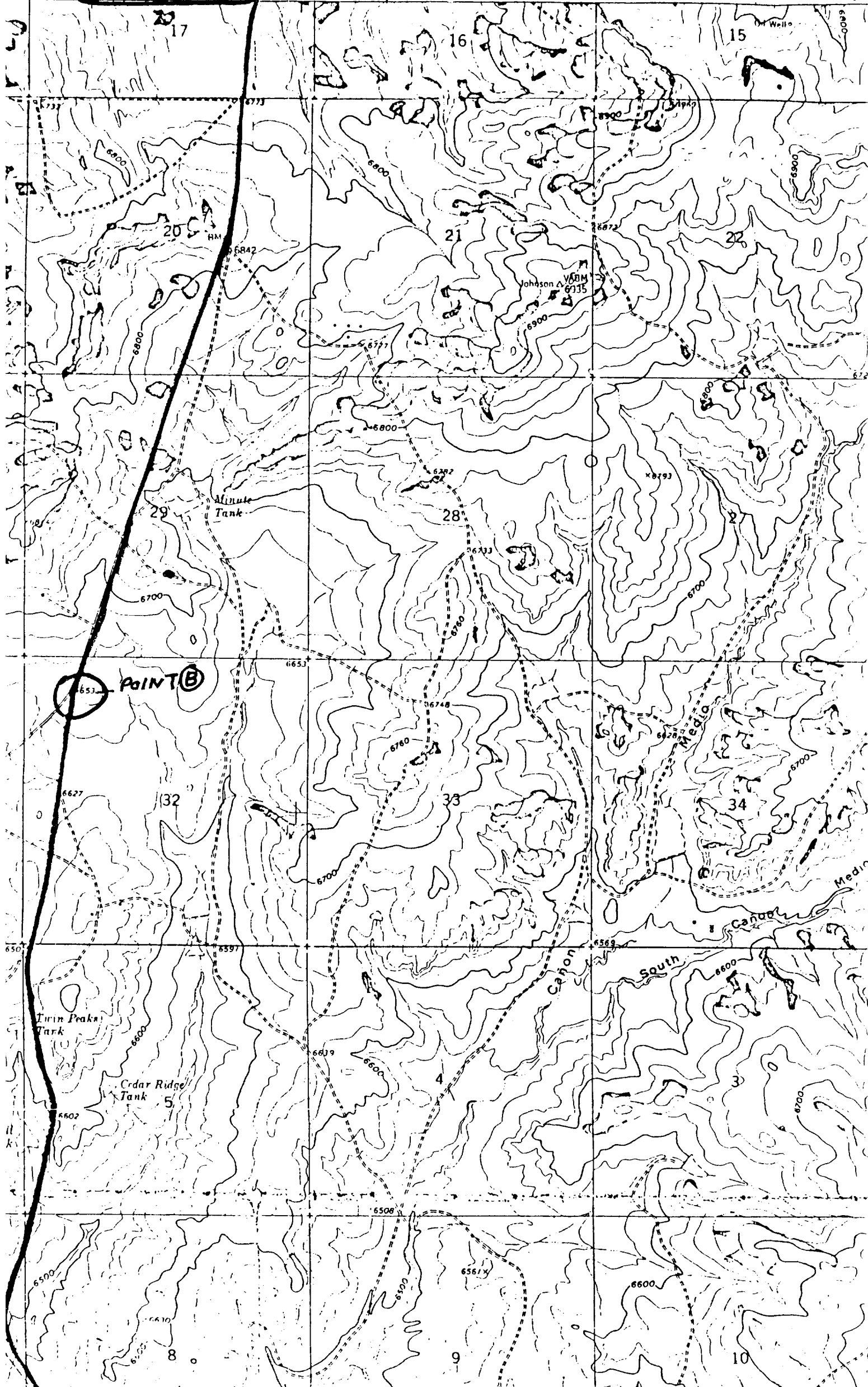


EXHIBIT "E₁"

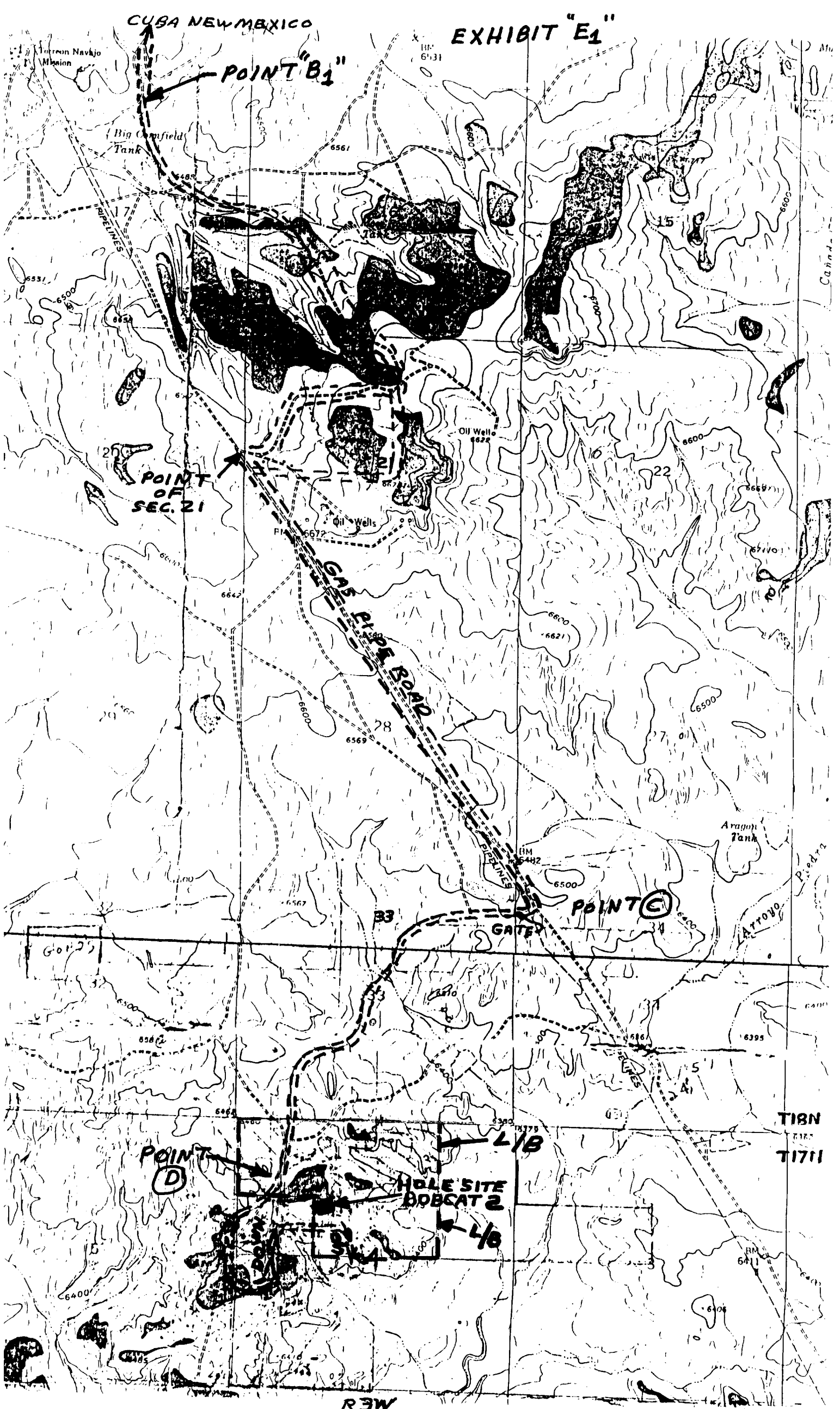
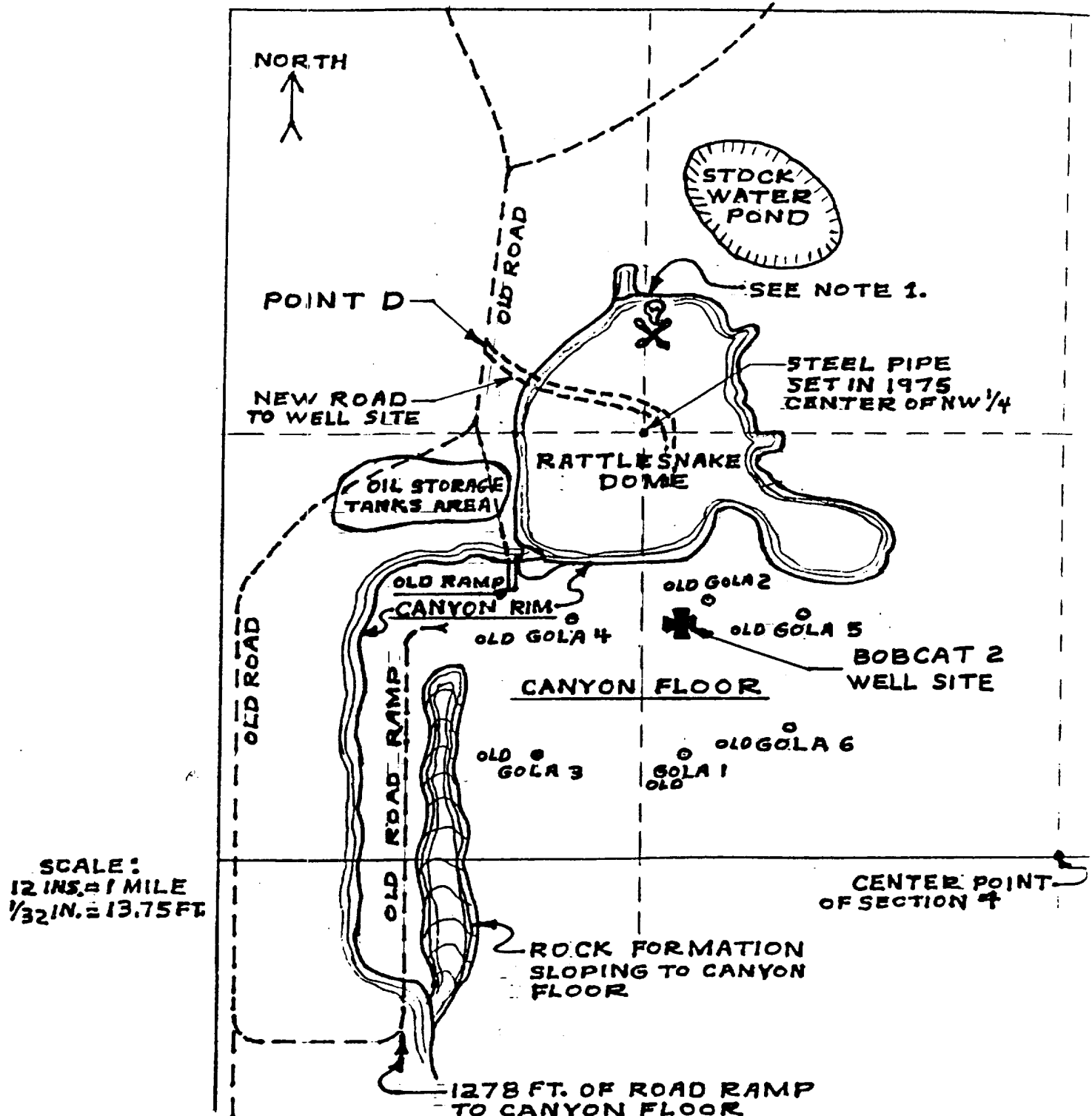


EXHIBIT "E2"
APPROACH ROADS
TO WELL SITE
NW 1/4 SECTION 4 T17N/R3W



NOTES:

1. ALL LAND INSPECTORS BE-WARE ROCKY SHELIVING PROJECTING OUT ARE HOUSING RATTLE SNAKE DENS UNDER THESE SHELIVES IN THIS AREA-MANY-MANY BIG-BIG SNAKES.
2. CANYON FLOOR IS APPROXIMATELY 74 FT. LOWER THAN TOP OF DOME. BY C.M. GOAD