

UNITED STATES  
DEPARTMENT OF THE INTERIOR  
BUREAU OF LAND MANAGEMENT

Form approved.  
Budget Bureau No. 1004-0136  
Expires August 31, 1985

APPLICATION FOR PERMIT TO DRILL, DEEPEN, OR PLUG BACK

1a. TYPE OF WORK

DRILL ☒

DEEPEN ☐

PLUG BACK ☐

b. TYPE OF WELL

OIL WELL ☒

GAS WELL ☐

OTHER ☐

SINGLE ZONE ☒

MULTIPLE ZONE ☐

2. NAME OF OPERATOR

7272

Energy Development Corporation (713) 750-7536

3. ADDRESS OF OPERATOR

1000 Louisiana, Suite 2900, Houston, Tx. 77002

4. LOCATION OF WELL (Report location clearly and in accordance with any State requirements.)

At surface

1150' FSL & 1620' FEL

At proposed prod. zone

Same

API #: 30-43-20923

14. DISTANCE IN MILES AND DIRECTION FROM NEAREST TOWN OR POST OFFICE\*

7 air miles SW of Cuba, NM

15. DISTANCE FROM PROPOSED\*

LOCATION TO NEAREST PROPERTY OR LEASE LINE, FT. (Also to nearest drilg. unit line, if any)

\*1150'

16. NO. OF ACRES IN LEASE

\*120

18. DISTANCE FROM PROPOSED LOCATION\* TO NEAREST WELL, DRILLING, COMPLETED, OR APPLIED FOR, ON THIS LEASE, FT.

2040'

19. PROPOSED DEPTH

4,450'

17. NO. OF ACRES ASSIGNED TO THIS WELL

S/320

20. ROTARY OR CABLE TOOLS

Rotary

21. ELEVATIONS (Show whether DF, RT, GR, etc.)

6,925' ungraded ground

22. APPROX. DATE WORK WILL START\*

Oct. 3, 1994

23.

PROPOSED CASING AND CEMENTING PROGRAM

SIZE OF HOLE	SIZE OF CASING	WEIGHT PER FOOT	SETTING DEPTH	QUANTITY OF CEMENT
13-1/2"	10-3/4"	40.5 (H-40)	350'	≈285 cu ft and to surface
9-7/8"	7-5/8"	26.4# (N-80)	3,800'	≈1205 cu ft and to surface
6-3/4"	5-1/2"	17# (N-80)	4,450'	≈118 cu ft and to 3,500'

\*170' to closest lease line and 1620' to closest unit line  
120 acres in lease and 18,897.16 acres in unit  
all acreage dedicated to well in unit

RECEIVED  
OCT 12 1994

OIL CON. DR.  
DIST. 3

This APD is also serving as a road right-of-way application. The R/W will run from the Chijuilla Road east for 1.3 mi. to the well and be 25' wide. The R/W crosses S2NE4 Sec. 6 and SWNW, N2SW4, & W2SE4 Sec. 5, T. 20 N., R. 2 W. All of the R/W is within unit boundaries.

cc: BLM(4 +2 for OCD), Gerding

IN ABOVE SPACE DESCRIBE PROPOSED PROGRAM: If proposal is to deepen or plug back, give data on present productive zone and proposed new productive zone. If proposal is to drill or deepen directionally, give pertinent data on subsurface locations and measured and true vertical depths. Give blowout preventer program, if any.

24.

SIGNED [Signature] TITLE Consultant DATE 9-28-94

(This space for Federal or State office use)

PERMIT NO. \_\_\_\_\_ APPROVAL DATE \_\_\_\_\_

APPROVED BY S/L Kent Hamilton TITLE AREA MANAGER DATE OCT 6 1994

CONDITIONS OF APPROVAL, IF ANY:

RIO PUERTO RESOURCE AREA

\*See Instructions On Reverse Side

DISTRICT I  
P.O. Box 1980, Hobbs, NM 88240

State of New Mexico  
Energy, Minerals and Natural Resources Department

Form C-102  
Revised February 10, 1994  
Instruction on back  
Submit to Appropriate District Office  
State Lease - 4 Copies  
Fee Lease - 3 Copies

DISTRICT II  
P.O. Drawer DD, Artesia, NM 88210

OIL CONSERVATION DIVISION

DISTRICT III  
1000 Rio Brazos Rd., Aztec, NM 87410

P.O. Box 2088  
Santa Fe, New Mexico 87504-2088

☐ AMENDED REPORT

WELL LOCATION AND ACREAGE DEDICATION PLAT

API Number <u>30-043-30923</u>	Pool Code <u>52260</u>	Pool Name <b>Rio Puerco-Mancos Oil</b>
Property Code <u>13448</u>	Property Name <b>SAN ISIDRO 5</b>	Well Number <b>15</b>
OGRID No. <u>7272</u>	Operator Name <b>ENERGY DEVELOPMENT CORPORATION</b>	Elevation <b>6925'</b>

Surface Location

UL or lot No.	Section	Township	Range	Lot Idn	Feet from the	North/South line	Feet from the	East/West line	County
<b>0</b>	<b>5</b>	<b>20 N</b>	<b>2 W</b>		<b>1150</b>	<b>SOUTH</b>	<b>1620</b>	<b>EAST</b>	<b>SANDOVAL</b>

Bottom Hole Location If Different From Surface

UL or lot No.	Section	Township	Range	Lot Idn	Feet from the	North/South line	Feet from the	East/West line	County
Dedicated Acres	Joint or Infill	Consolidation Code	Order No.						

NO ALLOWABLE WILL BE ASSIGNED TO THIS COMPLETION UNTIL ALL INTERESTS HAVE BEEN CONSOLIDATED  
OR A NON-STANDARD UNIT HAS BEEN APPROVED BY THE DIVISION

				<b>OPERATOR CERTIFICATION</b>  I hereby certify the the information contained herein is true and complete to the best of my knowledge and belief.   Signature <b>Brian Wood</b>  Printed Name <b>Consultant</b>  The <b>September 28, 1994</b> Date	
				<b>SURVEYOR CERTIFICATION</b>  I hereby certify that the well location shown on this plat was plotted from field notes of actual surveys made by me or under my supervision, and that the same is true and correct to the best of my belief.  <b>MAY 27, 1994</b> Date Surveyed Signature & Seal of Professional Surveyor  W.O. Num. <b>94-11-0918</b> Certificate No. <b>JOHN W. WEST, 676</b> <b>RONALD J. EIDSON, 3239</b> <b>GARY L. JONES, 7977</b>	

Energy Development Corporation  
San Isidro (Shallow) Unit 5-15  
1150' FSL & 1620' FEL  
Sec. 5, T. 20 N., R. 2 W.  
Sandoval County, NM

PAGE 7

## Surface Use Plan

### 1. DIRECTIONS & EXISTING ROADS (See Pages 10 & 11)

From NM 44 on the south side of Cuba, go W 9.0 mi. on NM 197.  
Then turn right and go NW 0.1 mi. onto the dirt Chijuilla Road.  
Then turn right and go N 3.0 mi. on the Chijuilla Road.  
Then turn right and go SE 0.7 mi. on the San Isidro 5-14 well road.  
Then turn left and follow a jeep trail ESE 0.6 mi. to the wellsite.  
Roads will be maintained to a standard at least equal to their present condition.

*This APD is also serving as a road right-of-way application. The R/W will run from the Chijuilla Road east for 1.3 mi. to the well and be 25' wide. The R/W crosses S2NE4 Sec. 6 and SWNW, N2SW4, & W2SE4 Sec. 5, T. 20 N., R. 2 W. All of the R/W is within unit boundaries.*

### 2. ROAD TO BE UPGRADED (See Page 11)

No new road will be built. About 0.6 mi. of jeep trail will be upgraded and 0.7 mi. of field road will be repaired. The field road will be recrowned and reditched with a  $\approx 14'$  wide running surface and a maximum disturbed width of  $\approx 25'$ . Existing borrow ditches will be cleaned. Borrow ditch turnouts will be installed every 100' on both sides of the road where it crosses a ridge in the N2SW4 Section 5. No trees will be bladed where a grove is bisected in NWSE Section 5. A short fence and locking gate will be installed in the grove. Maximum grade will be 5%. Maximum cut or fill will be 1'. No cattleguards are needed.

The west most existing culvert will be pulled and replaced by a low

Energy Development Corporation  
San Isidro (Shallow) Unit 5-15  
1150' FSL & 1620' FEL  
Sec. 5, T. 20 N., R. 2 W.  
Sandoval County, NM

PAGE 11

### 13. REPRESENTATION

Anyone having questions concerning the APD should call:

Brian Wood, Consultant  
Permits West, Inc.  
37 Verano Loop  
Santa Fe, NM 87505  
(505) 466-8120  
FAX: (505) 466-9682

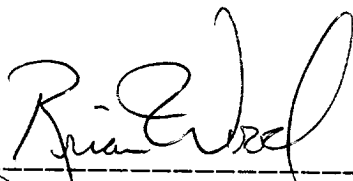
or

Mark Gerding  
Energy Development Corporation  
1000 Louisiana, Suite 2900  
Houston, Tx. 77002  
(713) 750-7536

The field representative during drilling will be Louis Yeager.

Energy Development Corporation has the necessary consents from the proper lease owners to conduct lease operations in conjunction with this well. Bond coverage pursuant to 43 CFR 3104 for lease activities and operations is being provided by Energy Development Corporation.

I hereby certify that I, or persons under my direct supervision, have inspected the proposed drill site and access route; that I am familiar with the conditions which currently exist; that the statements made in this plan are, to the best of my knowledge, true and correct; and that the work associated with operations proposed herein will be performed by Energy Development Corporation and its contractors and subcontractors in conformity with this plan and the terms and conditions under which it is approved. This statement is subject to the provisions of 18 U.S.C. 1001 for the filing of a false statement.

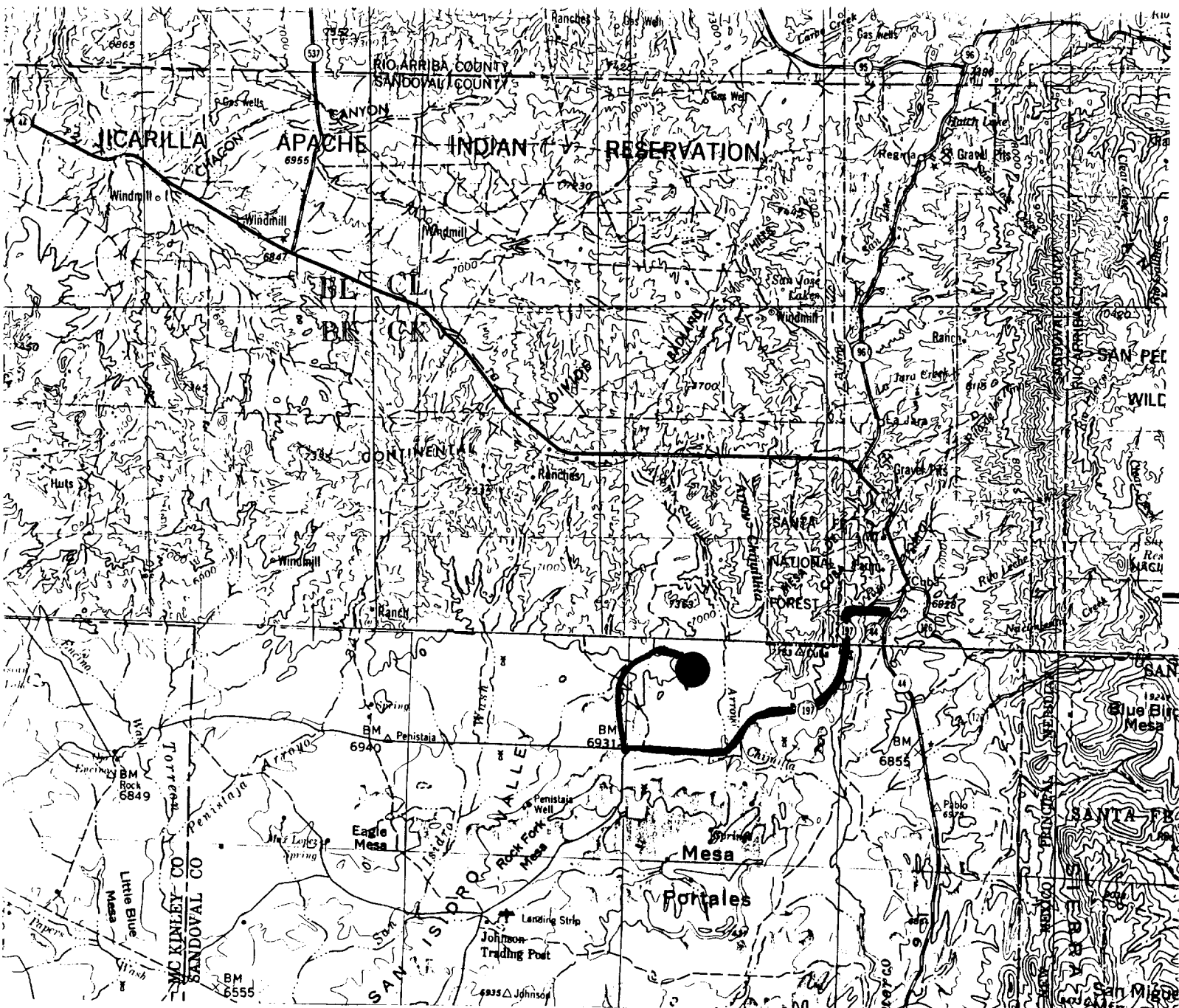


\_\_\_\_\_  
Brian Wood, Consultant

September 28, 1994  
Date

Energy Development Corporation  
 San Isidro (Shallow) Unit 5-15  
 1150' FSL & 1620' FEL  
 Sec. 5, T. 20 N., R. 2 W.  
 Sandoval County, NM

PAGE 12



Wellsite: ●

Access Route: ~

Energy Development Corporation  
San Isidro (Shallow) Unit 5-15  
1150' FSL & 1620' FEL  
Sec. 5, T. 20 N., R. 2 W.  
Sandoval County, NM

PAGE 13

