



BRUCE KING  
GOVERNOR

ANITA LOCKWOOD  
CABINET SECRETARY

STATE OF NEW MEXICO  
ENERGY, MINERALS AND NATURAL RESOURCES DEPARTMENT  
OIL CONSERVATION DIVISION

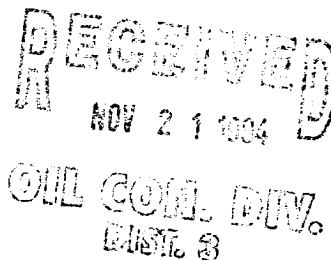


2040 S. PACHECO  
SANTA FE, NEW MEXICO 87505  
(505) 827-7131

November 10, 1994

Enery Development Corporation  
1000 Louisiana Street - Suite 2900  
Houston, Texas 77002

Attention: Mark S. Gerding



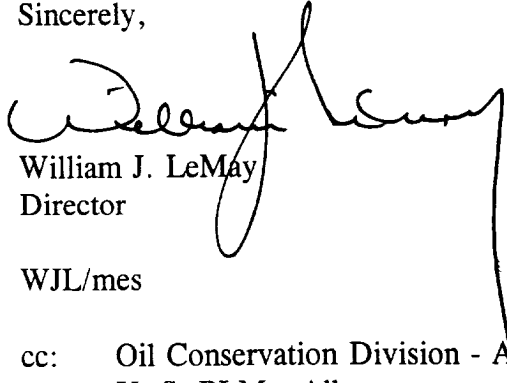
*Administrative Order NSL-3433*

Dear Mr. Gerding:

Reference is made to your application dated October 5, 1994 for a non-standard oil well location for your proposed San Isidro "5" Well No. 15 to be drilled 1150 feet from the South line and 1620 feet from the East line (Unit O) of Section 5, Township 20 North, Range 2 West, NMPM, Rio Puerco-Mancos Oil Pool, San Isidro (Shallow) Unit, Sandoval County, New Mexico. The S/2 of said Section 5 shall be dedicated to the well forming a standard 320-acre oil spacing and proration unit for said pool.

By the authority granted me under the provisions of Division Memorandum No. 4-86 and the Special Rules and Regulations for the Rio Puerco-Mancos Oil Pool, as promulgated by Division Order No. R-7471, as amended, the above- described unorthodox oil well location is hereby approved.

Sincerely,

  
William J. LeMay  
Director

WJL/mes

cc: Oil Conservation Division - Aztec  
U. S. BLM - Albuquerque



October 5, 1994

Mr. William J. Lemay  
New Mexico Oil Conservation Division  
310 Old Santa Fe Trail  
Santa Fe, New Mexico 87503

RE: San Isidro Well No. S-15  
San Isidro (Shallow) Unit  
Sandoval County, New Mexico

Subject: Application for Administrative Approval

Dear Mr. Lemay:

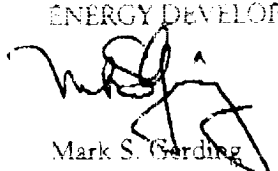
Pursuant to Order No. R-7471 A-1, Energy Development Corporation (EDC) hereby applies for administrative approval of the San Isidro S-15's unorthodox location. The proposed location is 1620' FE1 & 1150' FE2 of Section 3, T20N, R20W, N.M.P.M. Attached for your review is a copy of the C-222 and a topographic map. Please note that a standard location 330' setback from the quarter-quarter section lines would not allow a location due to the close proximity of an unnamed arroyo.

A Waiver of Objection to this location has been verbally approved by Gary Williams Production, an Operator of Section 4, T20N-R2W, N.M.P.M., Sandoval County, New Mexico. Mr. Craig Arnold of Gary Williams Production will telecopy the NMOC a copy of the signed waiver.

Please contact me at (713) 750-7306 if you need any additional information. Your prompt attention to this application is appreciated.

Sincerely,

ENERGY DEVELOPMENT CORPORATION

  
Mark S. Gerding  
Supervisor, Environmental & Regulatory Affairs

MSG:mk/NMOC

Attachment

**Energy Development Corporation**  
*A subsidiary of Public Service Enterprise Group Incorporated*

1000 Louisiana, Suite 2900, Houston, Texas 77002 (713) 750-7300

OCT 05 1984 DISTRICT EDC PRODUCTION ACCOUNTING

Form C-102  
Revised February 10, 1984  
Instruction on back  
Submit to Appropriate District Office  
State Lease - 4 Copies  
Fee Lease - 3 Copies

DISTRICT I  
P.O. Box 1980, Hobbs, NM 88240

DISTRICT II  
P.O. Drawer 80, Artesia, NM 88210

DISTRICT III  
1000 Rio Grande Rd., Artesia, NM 87410

# WELL FILE

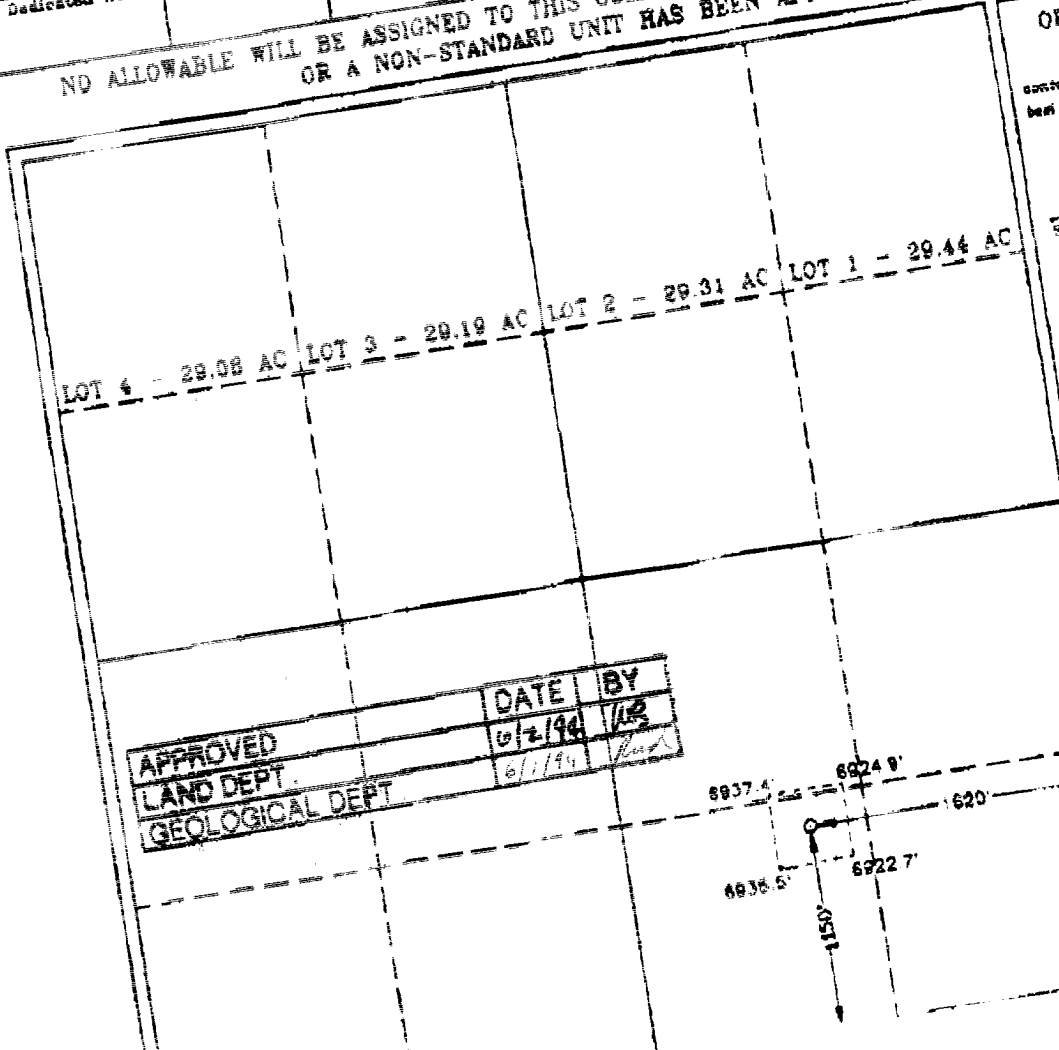
State of New Mexico  
Minerals and Natural Resources Department

OIL CONSERVATION DIVISION  
P.O. Box 2088  
Santa Fe, New Mexico 87504-2088

☐ AMENDED REPORT

API Number		Pool Code		Pool Name		Well Number	
Property Code		Property Name		Well Number		Elevation	
OCED No.		Operator Name		15		6925'	
ENERGY DEVELOPMENT CORPORATION							
Surface Location							
UL or Lot No.		Section	Township	Range	Lot 1/4	Feet from the	North/South line
0		5	20 N	2 W	1150	1620	SOUTH
Bottom Hole Location If Different From Surface							
UL or Lot No.		Section	Township	Range	Lot 1/4	Feet from the	North/South line
Dedicated Acres		Joint or In All	Consolidation Code	Order No.			

NO ALLOWABLE WILL BE ASSIGNED TO THIS COMPLETION UNTIL ALL INTERESTS HAVE BEEN CONSOLIDATED  
OR A NON-STANDARD UNIT HAS BEEN APPROVED BY THE DIVISION



APPROVED	DATE	BY
LAND DEPT.	6/2/94	1/2
GEOLOGICAL DEPT.	6/1/94	1/2

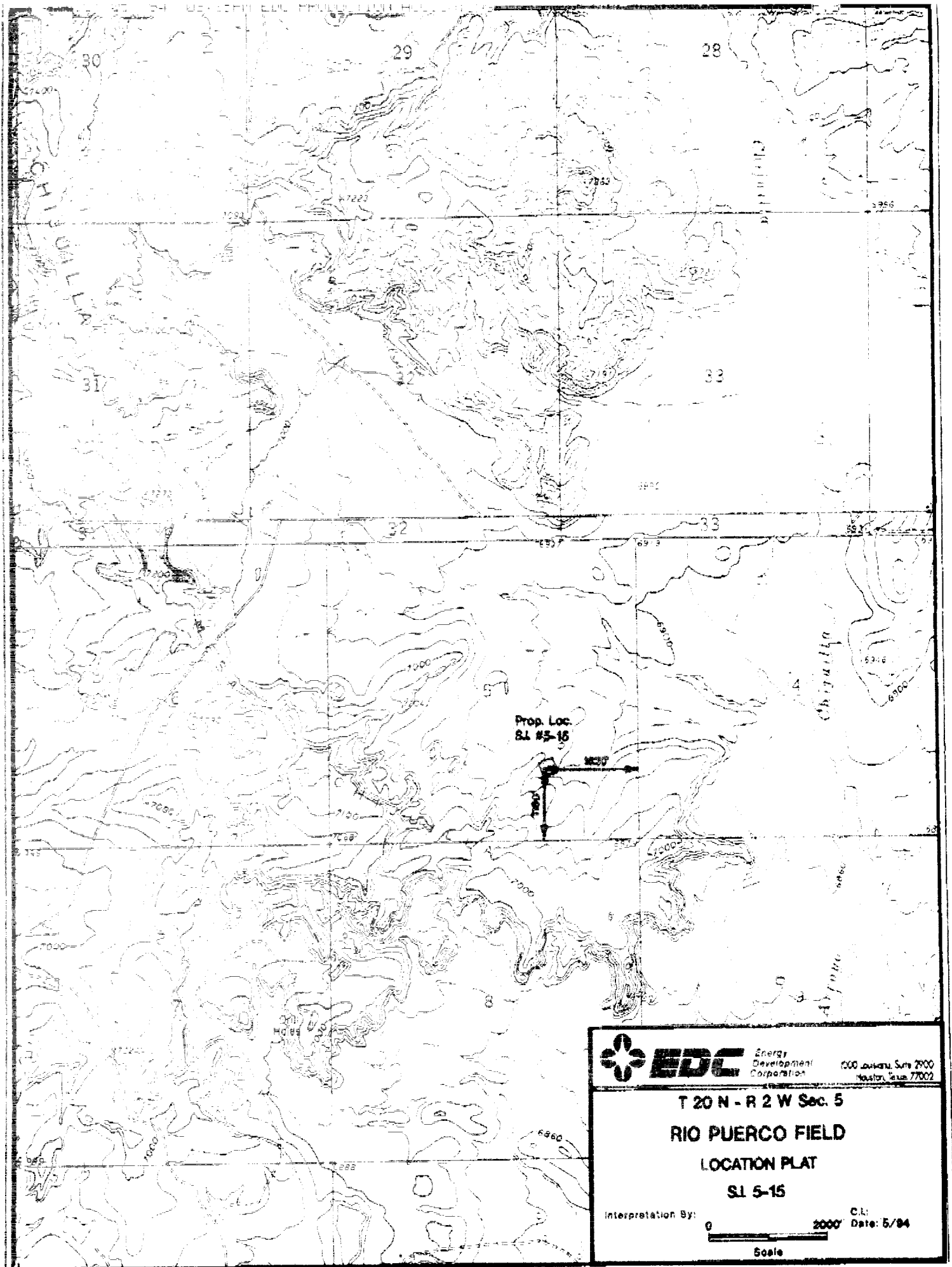
**OPERATOR CERTIFICATION**  
I hereby certify the information contained herein is true and complete to the best of my knowledge and belief.


Signature \_\_\_\_\_  
Printed Name \_\_\_\_\_  
Title \_\_\_\_\_  
Date \_\_\_\_\_

**SURVEYOR CERTIFICATION**  
I hereby certify that the well location on this plat was plotted from field actual surveys made by me or my assistants and that the same is correct to the best of my belief.


MAY 27, 1984

Date Surveyed \_\_\_\_\_  
Signature & Seal of Professional Surveyor \_\_\_\_\_  
W.O. Num. 84-11  
Certificate No. \_\_\_\_\_  
JOHN W. RONALD J. DARY



**EDC** Energy Development Corporation  
1000 Louisiana, Suite 2900  
Houston, Texas 77002

**T 20 N - R 2 W Sec. 5**  
**RIO PUERCO FIELD**  
**LOCATION PLAT**  
**SL 5-15**

Interpretation By:  2000' Date: 5/84  
Scale