

UNITED STATES
DEPARTMENT OF THE INTERIOR
BUREAU OF LAND MANAGEMENT

SUBMIT IN TRIPLICATE*
(Other instructions on
reverse side)

FORM APPROVED
OMB NO. 1004-0136
Expires: February 28, 1995

APPLICATION FOR PERMIT TO DRILL OR DEEPEN

1a. TYPE OF WORK

DRILL ☒

DEEPEN ☐

b. TYPE OF WELL

OIL
WELL ☒

GAS
WELL ☐

OTHER

SINGLE
ZONE ☒

MULTIPLE
ZONE ☐

2. NAME OF OPERATOR

Limark Corporation (915) 684-5765 152527

3. ADDRESS AND TELEPHONE NO.

P.O. Box 10708, Midland, Tx 79702-7708

4. LOCATION OF WELL (Report location clearly and in accordance with any State requirements.)*
At surface

1395' FSL & 1575' FEL

At proposed prod. zone

Same

14. DISTANCE IN MILES AND DIRECTION FROM NEAREST TOWN OR POST OFFICE*

18 air miles WSW of Cuba, NM

15. DISTANCE FROM PROPOSED*

LOCATION TO NEAREST
PROPERTY OR LEASE LINE, FT.
(Also to nearest drlg. unit line, if any)

1,065'

16. NO. OF ACRES IN LEASE

320

17. NO. OF ACRES ASSIGNED
TO THIS WELL

40

18. DISTANCE FROM PROPOSED LOCATION*
TO NEAREST WELL, DRILLING, COMPLETED,
OR APPLIED FOR, ON THIS LEASE, FT.

N/A

19. PROPOSED DEPTH

6,000'

20. ROTARY OR CABLE TOOLS

Rotary

21. ELEVATIONS (Show whether DF, RT, GR, etc.)

6,847' ungraded ground

22. APPROX. DATE WORK WILL START*

Dec. 20, 1997

23.

PROPOSED CASING AND CEMENTING PROGRAM

SIZE OF HOLE	GRADE SIZE OF CASING	WEIGHT PER FOOT	SETTING DEPTH	QUANTITY OF CEMENT
12-1/4"	9-5/8" (J-55)	36#	250'	≈230 cu ft & to surface
8-3/4"	7" (C-95/N-80)	23/26#	6,000'	≈1,708 cu ft & to surface

RECEIVED
DEC 19 1997
OIL CON. DIV.
DIST. 3

IN ABOVE SPACE DESCRIBE PROPOSED PROGRAM: If proposal is to deepen, give data on present productive zone and proposed new productive zone. If proposal is to drill or deepen directionally, give pertinent data on subsurface locations and measured and true vertical depths. Give blowout preventer program, if any.

24.

SIGNED

Brian M. Kelly

Consultant (505) 466-8120

12-2-97

TITLE

DATE

(This space for Federal or State office use)

PERMIT NO.

APPROVAL DATE

Application approval does not warrant or certify that the applicant holds legal or equitable title to those rights in the subject lease which would entitle the applicant to conduct operations thereon.
CONDITIONS OF APPROVAL, IF ANY:

(Original Signed) HECTOR A. VILLALBA

APPROVED BY

TITLE

DATE

HOLD C-104 FOR 1516 *See Instructions On Reverse Side

Title 18 U.S.C. Section 1001, makes it a crime for any person knowingly and willfully to make to any department or agency of the

District I
PO Box 1980, Hobbs, NM 88241-1980
District II
PO Drawer DD, Artesia, NM 88211-0719
District III
1000 Rio Brazos Rd., Aztec, NM 87410
District IV
PO Box 2088, Santa Fe, NM 87504-2088

State of New Mexico
Energy, Minerals & Natural Resources Department

OIL CONSERVATION DIVISION
PO Box 2088
Santa Fe, NM 87504-2088

14010 C-104 FOR
NPLC

Form C-102
Revised February 21, 1994
Instructions on back
Submit to Appropriate District Office
State Lease - 4 Copies
Fee Lease - 3 Copies

☐ AMENDED REPORT

WELL LOCATION AND ACREAGE DEDICATION PLAT

¹ API Number 30-043-20944		² Pool Code 96773	³ Pool Name WILDCAT 20N40W27E, ENTRADA (C)
⁴ Property Code 22208	⁵ Property Name Federal, 27		⁶ Well Number 1
⁷ OGRID No. 152527	⁸ Operator Name LIMARK CORPORATION		⁹ Elevation 6847'

¹⁰ Surface Location

UL or lot no.	Section	Township	Range	Lot Idn	Feet from the	North/South line	Feet from the	East/West line	County
J	27	20 N.	4 W.		1395	South	1575	East	Sandoval

¹¹ Bottom Hole Location If Different From Surface

UL or lot no.	Section	Township	Range	Lot Idn	Feet from the	North/South line	Feet from the	East/West line	County

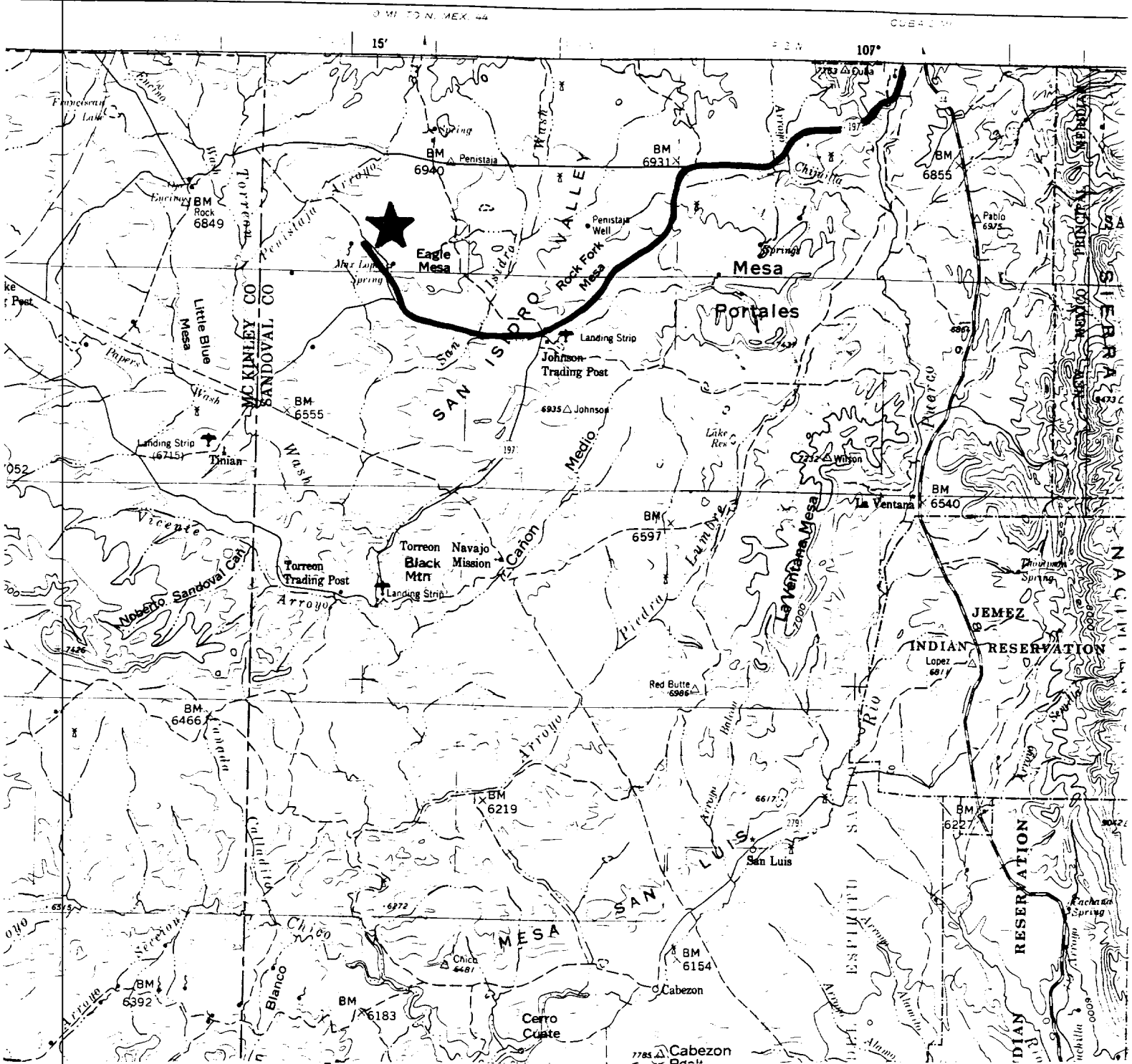
¹² Dedicated Acres 4.0	¹³ Joint or Infill	¹⁴ Consolidation Code	¹⁵ Order No.
--------------------------------------	-------------------------------	----------------------------------	-------------------------

NO ALLOWABLE WILL BE ASSIGNED TO THIS COMPLETION UNTIL ALL INTERESTS HAVE BEEN CONSOLIDATED
OR A NON-STANDARD UNIT HAS BEEN APPROVED BY THE DIVISION

<div>16</div> <div>RECEIVED DEC 19 1997 OIL CON. DIV. DIST. 3</div>			<div>17 OPERATOR CERTIFICATION</div> <p>I hereby certify that the information contained herein is true and complete to the best of my knowledge and belief</p> <div>Brian Wood</div> <div>Signature</div> <div>Brian Wood</div> <div>Printed Name</div> <div>Consultant</div> <div>Title</div> <div>December 2, 1997</div> <div>Date</div>
			<div>18 SURVEYOR CERTIFICATION</div> <p>I hereby certify that the well location shown on this plat was plotted from field notes of actual surveys made by me or under my supervision, and that the same is true and correct to the best of my belief</p> <div>1997</div> <div>Date of Survey</div> <div>Signature and Seal of Professional Surveyor</div> <div>6844</div> <div>Certificate Number</div>

Limark Corporation
Federal 27 #1
1395' FSL & 1575' FEL
Sec. 27, T. 20 N., R. 4 W.
Sandoval County, New Mexico

PAGE 11



PROPOSED WELL: ★

ACCESS ROUTE: ~