



December 29, 1997

Ernie Busch, Geologist
NM Oil Conservation Division
1000 Rio Brazos Rd.
Aztec, NM 87410

RECEIVED
JAN - 2 1998
OIL CON. DIV.
DIST. 3

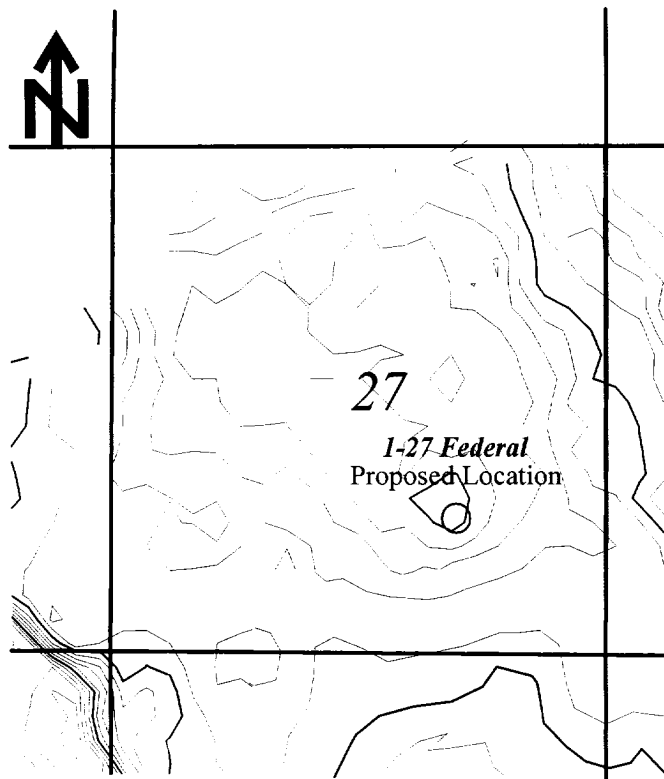
Dear Mr. Busch,

Enclosed please find a time structure map on the Entrada horizon in support of Limark Corporation's request for approval of a non-standard drilling location. As you can see, the Entrada dune is quite small and it is imperative that we drill the south end of the crest of it.

Any questions, please call.

Sincerely,

A.W. Rutter, III



Proposed location:
sec 27, 1400'FSL, 1600'FEL
T20N, R4W

LIMARK CORPORATION
Midland, Texas

Proposed Location 1-27 Federal
Sandoval County, NM

TIME: Entrada reflection

A.W.Rutter,III
September, 1997

map scale: 1"=2,000ft
contour interval = 2 ms.