

UNITED STATES
DEPARTMENT OF THE INTERIOR
BUREAU OF LAND MANAGEMENT

SUBMIT IN TRIPLICATE
(Other instructions on
reverse side)

Form approved.
Budget Bureau No. 1004-0136
Expires: December 31, 1991

APPLICATION FOR PERMIT TO DRILL OR DEEPEN

1a. TYPE OF WORK

DRILL ☒

DEEPEN ☐

b. TYPE OF WELL

OIL
WELL ☒

GAS
WELL ☐

OTHER ☐

SINGLE
ZONE ☐

MULTIPLE
ZONE ☐

2. NAME OF OPERATOR

High Plains Petroleum Corporation

3. ADDRESS AND TELEPHONE NO.

3860 Carlock Dr., Boulder, CO 80305 303-494-4529

4. LOCATION OF WELL (Report location clearly and in accordance with any State requirements.)

At surface

1980' FWL and 2277' FSL of Section 19

At proposed prod. zone Same

14. DISTANCE IN MILES AND DIRECTION FROM NEAREST TOWN OR POST OFFICE*

11 miles SW from Cuba, New Mexico along St. Hwy. 197 Sandoval

15. DISTANCE FROM PROPOSED*

LOCATION TO NEAREST
PROPERTY OR LEASE LINE, FT.
(Also to nearest drlg. unit line, if any)

660'

16. NO. OF ACRES IN LEASE

320

17. NO. OF ACRES ASSIGNED
TO THIS WELL

40 NE 1/4 SW 1/4

18. DISTANCE FROM PROPOSED LOCATION*
TO NEAREST WELL, DRILLING, COMPLETED,
OR APPLIED FOR, ON THIS LEASE, FT.

1353'

19. PROPOSED DEPTH

5860

20. ROTARY OR CABLE TOOLS

Rotary

21. ELEVATIONS (Show whether DF, RT, GR, etc.)

6873' GR

22. APPROX. DATE WORK WILL START*

Dec. 10, 2001

PROPOSED CASING AND CEMENTING PROGRAM

SIZE OF HOLE	GRADE, SIZE OF CASING	WEIGHT PER FOOT	SETTING DEPTH	QUANTITY OF CEMENT
13 3/4"	10 3/4"	40.5	400	272 sx. Circulate
8 3/4"	7"	23	5800	655 sx. Circulate
6 1/4"	4 1/2"	10.5	5860	20 sx. Top to 5700' min

A 5860 foot Jurassic Entrada test is proposed. Four hundred feet of surface casing will be set through the Pictured Cliffs Fm. to protect the Ojo Alamo aquifer and prevent any problem with gas from the coals in the Fruitland Fm., if lost circulation occurs in the Mancos Shale. A water based KCl mud will be used to the Todilto LS, where 5800' of 7" csg. will be set and cmt'd.. Then, an oil-based mud will be used to drill into the Entrada with a DST to be conducted after drilling 15 ft. of sand. A 4 1/2" production liner will be run from TD up 150 feet into the 7" csg. and cmt'd. for completion, if DST results, samples and log analysis justify such completion. A 10" Shaffer Double Gate BOP will be used for blowout prevention.

Attached Exhibits: (A) Location and Elevation Plat; (B) Ten Point Compliance Program; (C) Blowout Preventor Diagram; (D) Multi-point Requirements of APD; (E) Access to Location; (F) Drill Rig Layout; (G) Completion Program Layout; (H) Location Profile

IN ABOVE SPACE DESCRIBE PROPOSED PROGRAM: If proposal is to deepen, give data on present productive zone and proposed new productive zone. If proposal is to drill or deepen directionally, give pertinent data on subsurface locations and measured and true vertical depths. Give blowout preventer program, if any.

24.

SIGNED

John B. Ames II

TITLE

Petroleum Eng. & Pres.

DATE

11/28/2001

(This space for Federal or State office use)

PERMIT NO.

APPROVAL DATE

Application approval does not warrant or certify that the applicant holds legal or equitable title to those rights in the subject lease which would entitle the applicant to conduct operations thereon.
CONDITIONS OF APPROVAL, IF ANY:

APPROVED BY

S. Sw Anderson

TITLE

Asst. Field Mgr.
Lands and Mineral Resources

DATE

DEC 12 2001

*See Instructions On Reverse Side

District I
PO Box 1980, Hobbs, NM 88241-1980
District II
PO Drawer DD, Artesia, NM 88211-0719
District III
1000 Rio Brazos Rd., Aztec, NM 87410
District IV
PO Box 2088, Santa Fe, NM 87504-2088

EXHIBIT "A"
State of New Mexico
Energy, Minerals & Natural Resources Department

OIL CONSERVATION DIVISION
PO Box 2088
Santa Fe, NM 87504-2088

Form C-102
Revised February 21, 1994
Instructions on back
Submit to Appropriate District Office
State Lease - 4 Copies
Fee Lease - 3 Copies

☐ AMENDED REPORT

WELL LOCATION AND ACREAGE DEDICATION PLAT

¹ API Number 30-043-20953	² Pool Code 97165	³ Pool Name WLF Entrada 20N2W19K; Entrada
⁴ Property Code 29135	⁵ Property Name RIGHT ANGLE FEDERAL	⁶ Well Number 1
⁷ OGRID No. 010459	⁸ Operator Name HIGH PLAINS PETROLEUM CORPORATION	⁹ Elevation 6873

¹⁰ Surface Location

UL or lot no.	Section	Township	Range	Lot Idn	Feet from the	North/South line	Feet from the	East/West line	County
K	19	20 N	2 W		2277	South	1980	West	Sandoval

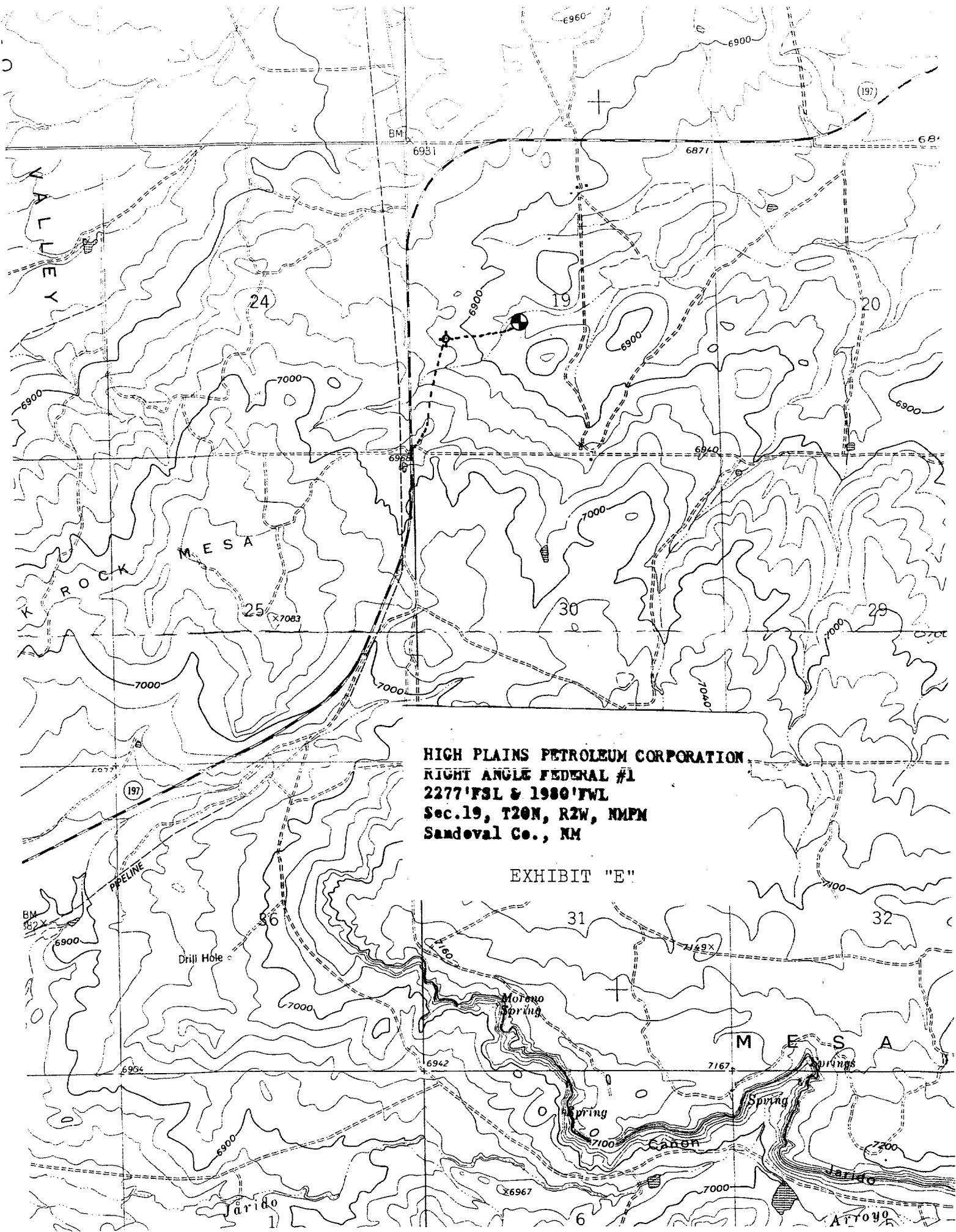
¹¹ Bottom Hole Location If Different From Surface

UL or lot no.	Section	Township	Range	Lot Idn	Feet from the	North/South line	Feet from the	East/West line	County

¹² Dedicated Acres 90	¹³ Joint or Infill	¹⁴ Consolidation Code	¹⁵ Order No.
-------------------------------------	-------------------------------	----------------------------------	-------------------------

NO ALLOWABLE WILL BE ASSIGNED TO THIS COMPLETION UNTIL ALL INTERESTS HAVE BEEN CONSOLIDATED
OR A NON-STANDARD UNIT HAS BEEN APPROVED BY THE DIVISION

<p>16</p> <p>N 89° 54' E</p> <p>80.00 ch.</p> <p>80.00 ch.</p> <p>1980'</p> <p>2277'</p> <p>N 89° 56' E</p> <p>80.00 ch.</p> <p>BT.</p>	<p>DEC 2001</p> <p>RECEIVED</p> <p>OIL CON. DIV.</p> <p>DIST. 3</p>	<p>17 OPERATOR CERTIFICATION</p> <p>I hereby certify that the information contained herein is true and complete to the best of my knowledge and belief</p> <p>Signature: John B. Somers II</p> <p>Printed Name: John B. Somers II</p> <p>Title: President</p> <p>Date: November 29, 2001</p>
	<p>18 SURVEYOR CERTIFICATION</p> <p>I hereby certify that the well location shown on this plat was plotted from field notes of actual surveys made by me or under my supervision, and that the same is true and correct to the best of my belief</p> <p>Date of Survey: 11/29/01</p> <p>Signature and Seal of Professional Surveyor: William E. Mahinke II</p> <p>Certificate Number: 8466</p>	



HIGH PLAINS PETROLEUM CORPORATION
RIGHT ANGLE FEDERAL #1
2277'FSL & 1980'FWL
Sec.19, T20N, R2W, NMPM
Sandoval Co., NM

EXHIBIT "E"

EXHIBIT "B"
Ten-Point Compliance Program
of NTL-6 Approval of Operations

Attached to Form 3160-3

High Plains Petroleum Corporation
Right Angle Federal #1
2277' FSL & 1980' FWL
Sec. 19, T20N, R2W, NMPM,
Sandoval County, New Mexico

1. The Geologic Surface Formation

Nacimiento Fm

2. Estimated Tops of Important Geologic Markers

Cliff House SS	700'
Mancos SH	2750'
Dakota SS	4830'
Entrada SS	5800'

3. Estimated Depths of Anticipated Water, Oil, Gas or Minerals

Dakota Sands	4830-4950' (Oil or Gas)
Entrada SS	5800-5860' (Oil)

4. The Proposed Casing Program

<u>Hole Size</u>	<u>Interval</u>	<u>Length</u>	<u>Size(OD)</u>	<u>Weight, Grade & Type</u>		
10 3/4"	0-400'	400'	10 3/4"	40.5#	J55	New
8 3/4"	400-5800'	5400'	7"	23#	J55	New
6 1/4"	5550-5860'	210'	4 1/2"	10.5#	J55	New

Cement Program

Surface - 400' of 10 3/4" 40.5# csg. will be cmt'd. w/ 272 sx. of ClB cmt. containing 2% CaCl₂ (Yield -1.18ft.³/sk.)

Production - 5800' 7" 23# csg. will be cmt'd. in two stages, 154 sx. ClB to cmt. 5800 to 4700' (Yield -1.18ft.³/sk.) and 501 sx. Lite Wt. cmt. cont. 2% sodiummeta-silicate, 3 lb./sk. gilsonite and 1/4 lb./sk. cellophane to cmt. 4700 to 200', 200' into the surface csg. (Yield -2.01ft³/sk.)

Liner - 210' 4 1/2" 10.5# csg. will be cmt'd. w/ 20 sx. ClB from TD up 150' into the 7" csg. (Yield -1.2ft.³/sk.)