

NEW MEXICO OIL CONSERVATION COMMISSION
Santa Fe, New Mexico

NOTICE OF INTENTION TO DRILL OR RECOMPLETE

Notice must be given to the District Office of the Oil Conservation Commission and approval obtained before drilling or recompletion begins. If changes in the proposed plan are considered advisable, a copy of this notice showing such changes will be returned to the sender. Submit this notice in QUINTUPLICATE. One copy will be returned following approval. See additional instructions in Rules and Regulations of the Commission.

Denver, Colorado
(Place)

November 16, 1956
(Date)

OIL CONSERVATION COMMISSION
SANTA FE, NEW MEXICO

Gentlemen:

You are hereby notified that it is our intention to commence the (Drilling) (X) of a well to be known as

Sinclair Oil & Gas Company

(Company or Operator)

Santa Fe 55 Alone

(Lease)

Well No. 1

in "N"

(Unit)

The well is

located 1900 feet from the South line and 1900 feet from the

East

line of Section 20, T. 21 North, R. 9 West, NMPM.

(GIVE LOCATION FROM SECTION LINE) Wilcox Pool, San Juan County

D	C	B	A
E	F	G	H
L	K	J	I
M	N	O	P

If State Land the Oil and Gas Lease is No.

If patented land the owner is Patented

Address.

We propose to drill well with drilling equipment as follows: Rotary Tools

The status of plugging bond is Statelide

Drilling Contractor Contract not yet awarded

We intend to complete this well in the Hesperia-Gallup

formation at an approximate depth of 3000 feet.

CASING PROGRAM

We propose to use the following strings of Casing and to cement them as indicated:

Size of Hole	Size of Casing	Weight per Foot	New or Second Hand	Depth	Sacks Cement
12-1/4"	8-1/2"	24#	N	30'	30
7-7/8"	5-1/2"	17#	N	3000'	75

If changes in the above plans become advisable we will notify you immediately.

ADDITIONAL INFORMATION (If recompletion give full details of proposed plan of work.)



Approved 11-19, 1956
Except as follows:

OIL CONSERVATION COMMISSION

By [Signature]

Title

Sincerely yours,

Sinclair Oil & Gas Company
(Company or Operator)

By J. A. Jackson

Position Division Supt. Production

Send Communications regarding well to

Name J. A. Jackson

Address 601 Denver Club Bldg., Denver, Colorado

OIL CONSERVATION COMMISSION**AZTEC DISTRICT OFFICE**No. Copies Received **5****DISTRIBUTION**

	NO. FURNISHED	
Operator	1	
Santa Fe	1	
Proration Office		
State Land Office		
U. S. G. S.	2	
Transporter		
File	1	

NEW MEXICO
OIL CONSERVATION COMMISSION

Form C-128

Well Location and/or Gas Proration Plat

Date 11-16-56

Operator Sinclair Oil & Gas Company

Lease Santa Fe 55 Alamo

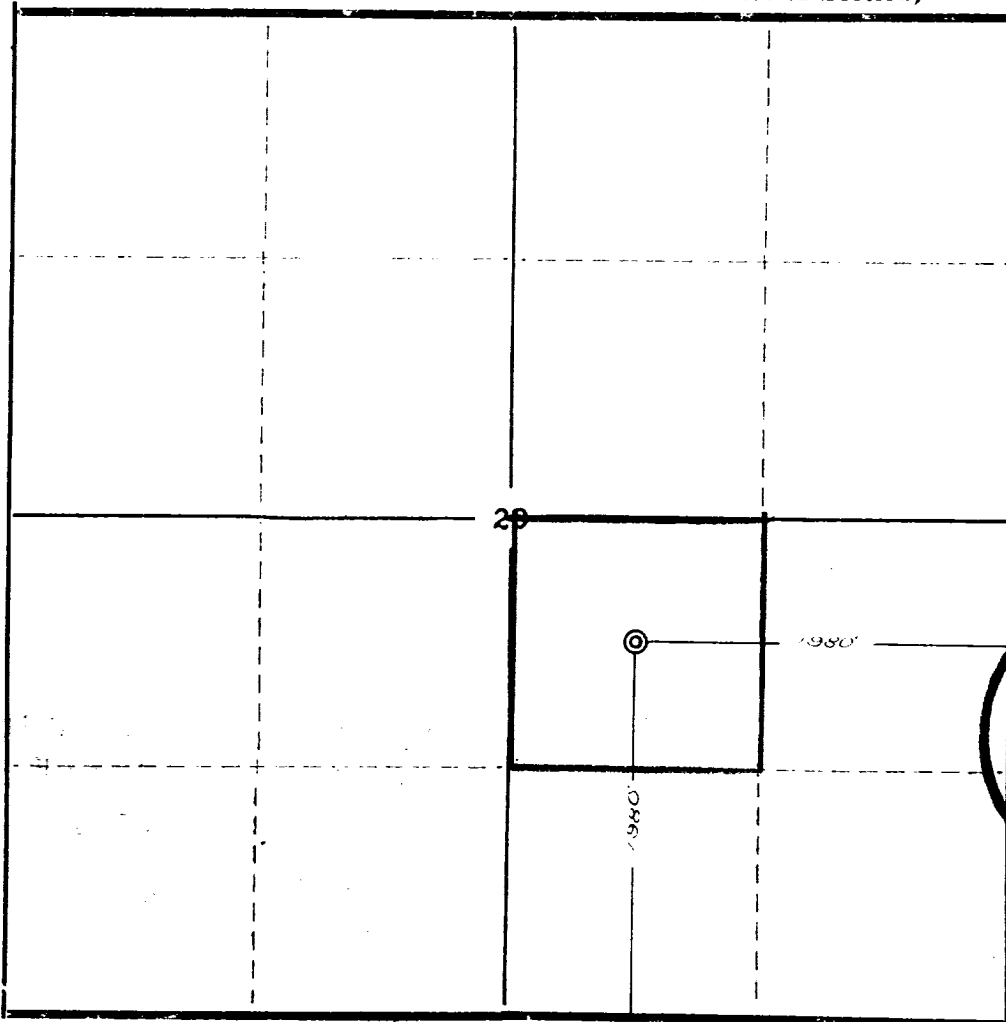
Well No. 1 ~~Alamo Unit~~ Section 20 Township 21 North Range 9 West NMPM

Located 1980 Feet From South Line, 1980 Feet From East Line,

San Juan County, New Mexico. G. L. Elevation 6416

Name of Producing Formation Hospah-Gallup Pool Wildcat Dedicated Acreage 40

(Note: All distances must be from outer boundaries of Section)



NOTE

This section of form is to be used for gas wells only.



SCALE: 1" = 1000'

1. Is this Well a Dual Comp. ? Yes No
2. If the answer to Question 1 is yes, are there any other dually completed wells within the dedicated acreage?
Yes No

This is to certify that the above plat was prepared from field notes of actual surveys made by me or under my supervision and that the same are true and correct to the best of my knowledge and belief.

Name _____
Position _____
Representing _____
Address _____

Date Surveyed July 23, 1956

Ernest V. Echohawk
Ernest V. Echohawk
Reg. Land Surveyor, N. Mex., Reg. No. 1545

OIL CONSERVATION COMMISSION		
AZTEC DISTRICT OFFICE		
No. Copies Received		5
DISTRIBUTION		
	NO. FURNISHED	
Operator	1	
Santa Fe	1	
Proration Office		
State Land Office		
U. S. G. S.	2	
Transporter		
File	1	✓