

Company L. G. Stearns et al

Lease Well No. 1 Nava jo

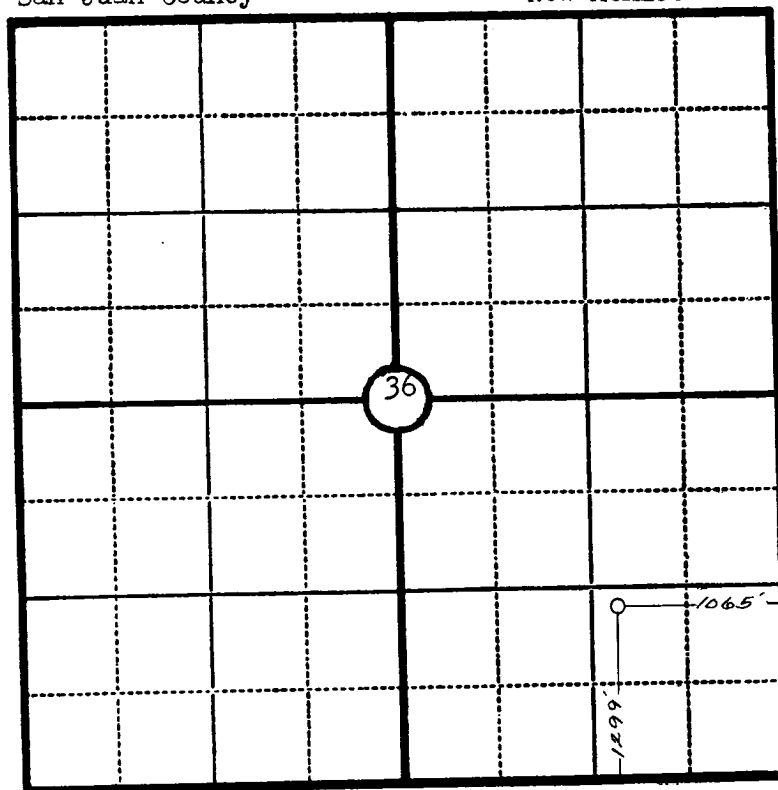
Sec. 36, T. 22 N., R. 14 W., N.M.P.M.

Location 1299' from the South line and 1065' from the East line.

Elevation 6078 Ungraded ground.

San Juan County

New Mexico



Scale—4 inches equal 1 mile.

This is to certify that the above plat was prepared from field notes of actual surveys made by me or under my supervision and that the same are true and correct to the best of my knowledge and belief.

Seal:

James P. Leese
Registered Professional
Engineer and Land Surveyor.

James P. Leese
N. Mex. Reg. No. 1463

Surveyed August 8, 19 53