

UNITED STATES  
DEPARTMENT OF THE INTERIOR  
BUREAU OF LAND MANAGEMENT

APPLICATION FOR PERMIT TO DRILL, DEEPEN, OR PLUG BACK

1a. TYPE OF WORK DRILL <input type="checkbox"/> DEEPEN <input checked="" type="checkbox"/> PLUG BACK <input type="checkbox"/>		5. LEASE DESIGNATION AND SERIAL NO. NM N5 277210
b. TYPE OF WELL OIL WELL <input type="checkbox"/> GAS WELL <input checked="" type="checkbox"/> OTHER <input type="checkbox"/> SINGLE ZONE <input checked="" type="checkbox"/> MULTIPLE ZONE <input type="checkbox"/>		6. IF INDIAN, ALLOTTEE OR TRIBE NAME
2. NAME OF OPERATOR Merrion Oil & Gas Corporation		7. UNIT AGREEMENT NAME
3. ADDRESS OF OPERATOR P. O. Box 840, Farmington, NM 87499		8. FARM OR LEASE NAME Snake Eyes
4. LOCATION OF WELL (Report location clearly and in accordance with any State requirements.) At surface 1980' FSL & 1980' FWL At proposed prod. zone		9. WELL NO. 2
14. DISTANCE IN MILES AND DIRECTION FROM NEAREST TOWN OR POST OFFICE*		10. FIELD AND POOL, OR WILDCAT Snake Eyes Dakota
15. DISTANCE FROM PROPOSED* LOCATION TO NEAREST PROPERTY OR LEASE LINE, FT. (Also to nearest drig. unit line, if any)	16. NO. OF ACRES IN LEASE 320	11. SEC., T., R., M., OR BLK. AND SURVEY OR AREA Sec 20, T21N, R8W
18. DISTANCE FROM PROPOSED LOCATION* TO NEAREST WELL, DRILLING, COMPLETED, OR APPLIED FOR, ON THIS LEASE, FT.	19. PROPOSED DEPTH 4,700'	12. COUNTY OR PARISH San Juan
21. ELEVATIONS (Show whether DF, RT, GR, etc.) 6560' GL, 6565' KB		13. STATE NM
22. APPROX. DATE WORK WILL START* November 15, 1990		

23. PROPOSED CASING AND CEMENTING PROGRAM				
SIZE OF HOLE	SIZE OF CASING	WEIGHT PER FOOT	SETTING DEPTH	QUANTITY OF CEMENT

We would like to reenter the Snake Eyes #2 (currently P & A'd) and complete the well in the Dakota Formation. Attached is a procedure for your approval.

IN ABOVE SPACE DESCRIBE PROPOSED PROGRAM: If proposal is to deepen or plug back, give data on present productive zone and proposed new productive zone. If proposal is to drill or deepen directionally, give pertinent data on subsurface locations and measured and true vertical depths. Give blowout preventer program, if any.

24. SIGNED George F. Sharpe TITLE Engineer DATE 10-25-90  
(This space for Federal or State office use)

PERMIT NO. \_\_\_\_\_ APPROVAL DATE \_\_\_\_\_

APPROVED BY \_\_\_\_\_ TITLE \_\_\_\_\_ DATE \_\_\_\_\_  
CONDITIONS OF APPROVAL, IF ANY:

cc: 6 BLM, Fmg  
1 Well File

\*See Instructions On Reverse Side

Title 18 U.S.C. Section 1001, makes it a crime for any person knowingly and willfully to make to any department or agency of the United States any false, fictitious or fraudulent statements or representations as to any matter within its jurisdiction.

MERRION OIL & GAS CORPORATION

SNAKE EYES NO. 2

Re-Entry Procedure

LOCATION: 1980' FSL & 1980' FWL October 23, 1990  
Sec. 20, T21N, R8W  
San Juan County, New Mexico

ELEVATION: 6560' GL Prepared by: George F. Sharpe  
6572' KB

---

- 1.) Cut off dry hole marker. Weld on bradenhead. Set anchors.
- 2.) MIRU. NU BOPs. Pick up 7-7/8" bit and drill collars. Drill out following cement plugs tripping for bit when necessary:  

0 - 28'  
42' - 160'  
223' - 400'  
902' - 950' 5-1/2" casing top
- 3.) POH w/ 7-7/8" bit. RIH w/ flat bottom mill and mill off top of 5-1/2" csg. POH. RIH w/ washpipe shoe. Wash over 5-1/2" csg to ±960' KB. POH. RIH w/ mill and dress off top of 5-1/2". POH.
- 4.) Pick up and RIH w/ 5-1/2" 15.5# csg w/ csg patch. Tie on to 5-1/2" @ 950'. Land 5-1/2" and install csg head.
- 5.) RIH w/ 4-3/4" bit and drill out cmt plug 950' to 1050'. Pressure test csg. If test good, go to step 9 and perform remedial cement job at a later date. If csg leaks, continue in hole and tag cement plug @ 4463'. Drill 50' to insure no trash in cement. Circ hole clean. POH.
- 6.) RU Wireline. Run CBL from 3500' to TOC (±2000'). RIH and perf sqz holes above TOC. RIH w/ tbg and CICR and set above squeeze holes.
- 7.) RU Cementers. Establish circulation. Cement csg to surface w/ procedure supplied @ later date. POH.
- 8.) RIH w/ 4-3/4" bit and drill out cmt through sqz holes. Pressure test csg to 1000 psi.

- 9.) Continue in hole and drill out cmt plug 4463' - 4620'. Circ hole clean. Swab well down to 2000'. POH.
- 10.) Run GR correlation log from PBTD to 3400'. RIH w/ 4" csg guns and perf 4580' - 4584' (5') and 4605' - 4608' (4') w/ 2 SPF (18 holes) @ 90°. (Induction log) POH. Swab in and test zone through a separator. Acidize if necessary.
- 11.) If zone looks wet, squeeze w/ 50 sx.
- 12.) Swab well down to 1500'. RIH w/ 4" csg guns and perf 4555' - 4560' (5') w/ 4 SPF (20 holes) @ 90°. RIH w/ 2-7/8" production string. Swab in and test through separator. Acidize if necessary. RDMOL.

Approved: \_\_\_\_\_

Date: 10-24-90

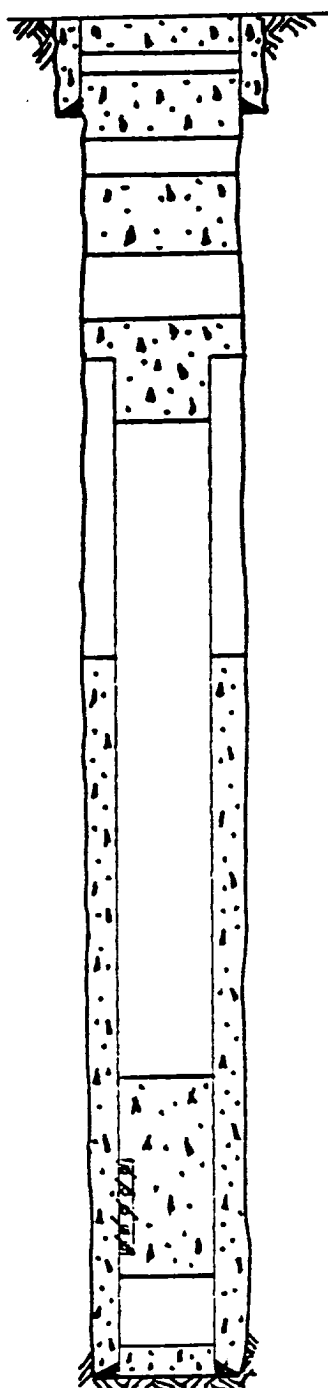
\* MERRION OIL & GAS \*

WELLBORE SCHEMATIC

Well: Snake Eyes No. 2  
Field: Snake Eyes Dakota

Location: 1980'FSL & 1980'FWL  
Sec. 20, T21N, R8W  
San Juan Co. New Mexico  
Operator: Tenneco

Elevation: 6,572' KB  
6,560' GL



TOC @ Surface

Surface Plug w/10sx from 28' to surface

8 5/8" 24# Surface @ 62' KB w/ 40sx  
Cement Plug w/40sx @ 160-42'KB

Cement Plug w/60sx @ 223-400'KB

Cut off Casing @ 950'KB

Cement Plug w/50sx - 902-1.050'KB est.

TOC @ 2.044'KB est

Hole size - 7 7/8"

Cement Plug w/25sx @ 4.463-4.650'KB

Dakota Perfs:

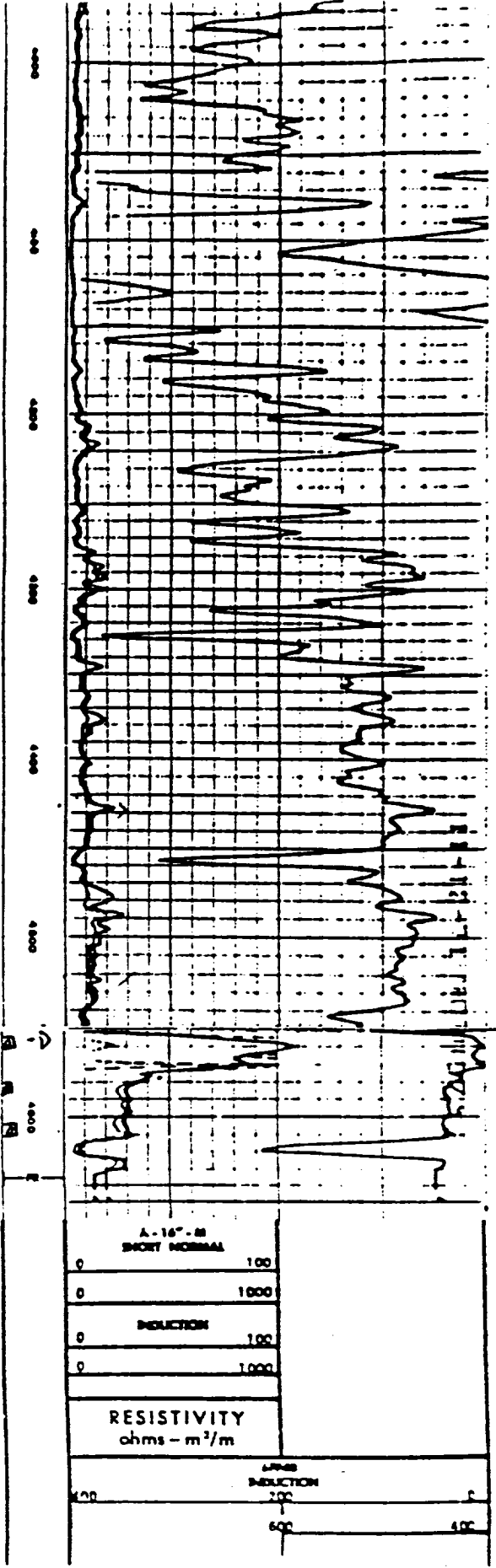
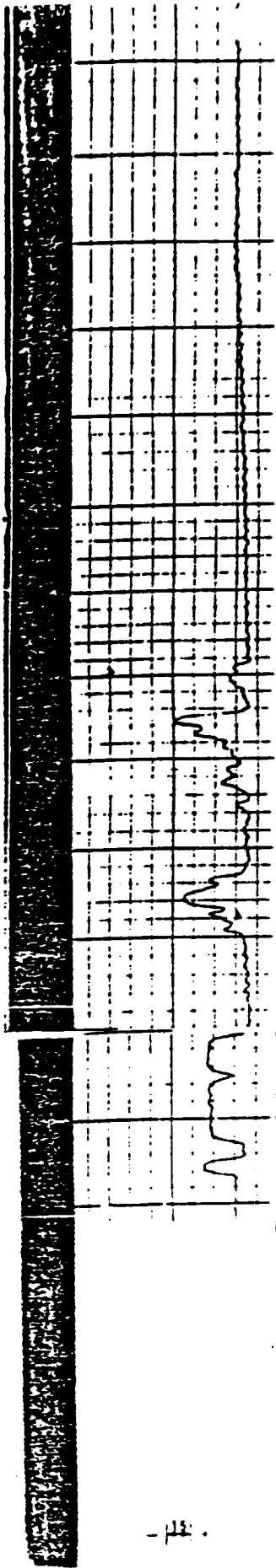
4.555-4.560'  
4.580-4.584'  
4.605-4.608'

5 1/2" 15.5# Casing @ 4.630'KB w/ 300sx  
TD @ 4.630' KB

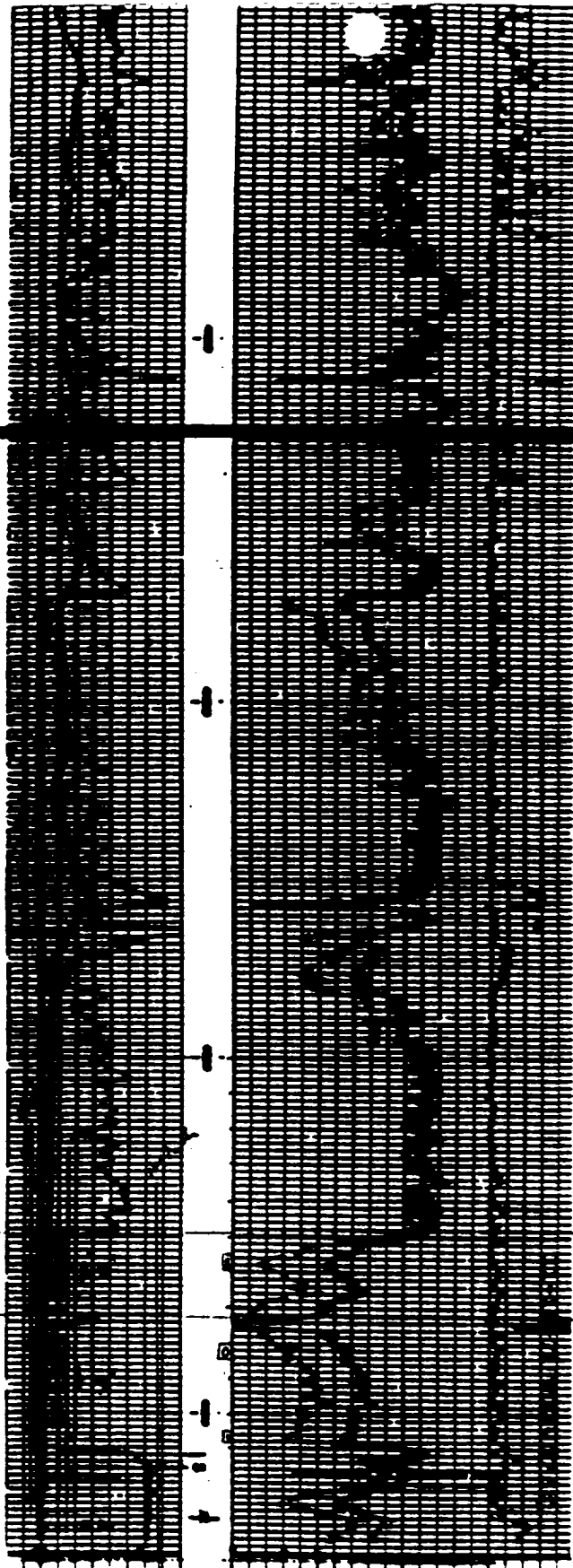
Tops	Depth
Fruitland	Surface
Pic Cliff	260
Cliffhouse	560
Menefee	610
Pt Lookout	2.550
Mancos	2.670
Gallup	3.450
Dakota	4.375

10/21/1988  
File: SE2.sch

Capacities: 2 3/8" Tbg - 0.00387 Bbl/Ft  
5 1/2" 15.5#Csg- 0.0238 Bbl/Ft  
Annulus - 0.1732 Cuft/Ft



A-16" - M	
SHORT NORMAL	
0	100
0	1000
INDUCTION	
0	100
0	1000
RESISTIVITY	
ohms - m <sup>2</sup> /m	
APPROX	
INDUCTION	
400	200
600	400



240 10 6 6