

UNITED STATES
DEPARTMENT OF THE INTERIOR
GEOLOGICAL SURVEY

APPLICATION FOR PERMIT TO DRILL, DEEPEN, OR PLUG BACK

1a. TYPE OF WORK

DRILL ☒DEEPEN ☐PLUG BACK ☐

b. TYPE OF WELL

OIL
WELL ☐GAS
WELL ☐OTHER ☐SINGLE
ZONE ☐MULTIPLE
ZONE ☐

2. NAME OF OPERATOR

DAVIS OIL COMPANY

3. ADDRESS OF OPERATOR

1230 Denver Club Bldg. - Denver, Colorado 80202

4. LOCATION OF WELL (Report location clearly and in accordance with any State requirements.)*

At surface

SW/4 SE/4

At proposed prod. zone 660' FSL - 1980' FEL of Sec. 17

14. DISTANCE IN MILES AND DIRECTION FROM NEAREST TOWN OR POST OFFICE*

15. DISTANCE FROM PROPOSED*

LOCATION TO NEAREST
PROPERTY OR LEASE LINE, FT.
(Also to nearest drlg. unit line, if any)18. DISTANCE FROM PROPOSED LOCATION*
TO NEAREST WELL, DRILLING, COMPLETED,
OR APPLIED FOR, ON THIS LEASE, FT.

21. ELEVATIONS (Show whether DF, RT, GR, etc.)

6578 GR - 6588 KB

16. NO. OF ACRES IN LEASE

360

19. PROPOSED DEPTH

4750

17. NO. OF ACRES ASSIGNED
TO THIS WELL

20. ROTARY OR CABLE TOOLS

Rotary

22. APPROX. DATE WORK WILL START*

7-10-71

5. LEASE DESIGNATION AND SERIAL NO.

NM-0176243

6. IF INDIAN, ALLOTTEE OR TRIBE NAME

7. UNIT AGREEMENT NAME

8. FARM OR LEASE NAME

SCHRAM/HANSON FEDERAL

9. WELL NO.

#1

10. FIELD AND POOL, OR WILDCAT

Wildcat

11. SEC., T., E., M., OR BLE.
AND SURVEY OR AREA

Sec. 17-21N-8W

12. COUNTY OR PARISH 13. STATE

San Juan New Mexico

PROPOSED CASING AND CEMENTING PROGRAM

SIZE OF HOLE	SIZE OF CASING	WEIGHT PER FOOT	SETTING DEPTH	QUANTITY OF CEMENT
12 1/2"	8 5/8"	24#	60'	cemented to surface
No intermediate string. If oil string is run, it will be 5 1/2" thru producing zone cemented to displace 600'				

OBJECTIVE: Top of the Morrison Formation.

LOGGING: Induction Electrical Survey and BHC Formation Density log with Gamma Ray from base of surface casing to total depth. BHC Sonic log with Caliper over the Dakota formation and other zones of interest to a maximum of 1500' of interval logged.

MUD PROGRAM: Fresh water native mud which will be converted to a 10 cc water loss or less chemical base mud for drilling the Dakota.

Good oil field practice will be used in determining the necessity of coring and/or drill stem testing any shows of oil or gas encountered.

IN ABOVE SPACE DESCRIBE PROPOSED PROGRAM: If proposal is to deepen or plug back, give data on present productive zone and proposed new productive zone. If proposal is to drill or deepen directionally, give pertinent data on subsurface locations and measured and true vertical depths. Give blowout preventer program, if any.

24.

SIGNED [Signature]

TITLE Geological Assistant

DATE 7-6-71

(This space for Federal or State office use)

PERMIT NO. _____

APPROVAL DATE _____

APPROVED BY _____

TITLE _____

CONDITIONS OF APPROVAL, IF ANY:

Okal

*See Instructions On Reverse Side

RECEIVED

JUL 12 1971

U. S. GEOLOGICAL SURVEY
FALLS CHURCH, N. C.

NEW MEXICO OIL CONSERVATION COMMISSION
WELL LOCATION AND ACERAGE DEDICATION PLAT

RECEIVED

JUL 12 1971

U. S. GEOLOGICAL SURVEY
FARMINGTON, N. M.

All distances must be from the outer boundaries of the Section

Operator

DAVES OIL COMPANY

SCHRAM-HANSON FEDERAL

Unit Letter

Section

Township

Range

County

0

17

21 NORTH

8 WEST

SAN JUAN

Actual location of Well

660

feet from the

SOUTH

1980

feet from the

EAST

line

Original Section

Tract containing well

Acres

Dedicated Average

40

Acres

6578.0

Cretaceous

Wildcat

- Outline the average acreage to the subject well by colored pencil or hatchure marks on the plat below.
 - If more than one lease is dedicated to the well, outline each unit and certify the ownership thereof (both as to working interest and royalty).
 - If more than one lease of different ownership is dedicated to the well, have the interests of all owners been consolidated by communitization, unitization, forced pooling, or?
 - Yes ☐ No ☐ If answer is "No," list the owners and tract descriptions which have actually consolidated. (Use reverse side of this form if necessary.)
- No allowable will be assigned to the well until all interests have been consolidated (by communitization, unitization, forced pooling, or otherwise) or until a non-stANDARD unit, eliminating such interests, has been approved by the Commission.

CERTIFICATION

I hereby certify that the information contained herein is true and complete to the best of my knowledge and belief.

Shelia Bergamo

Name

Geological Assistant

Position

Davis Oil Company

Company

7-6-71

Date

I hereby certify that the well location shown on this plat was plotted from field notes of actual surveys made by me or under my supervision, and that the same is true and correct to the best of my knowledge and belief.

18 June, 1971

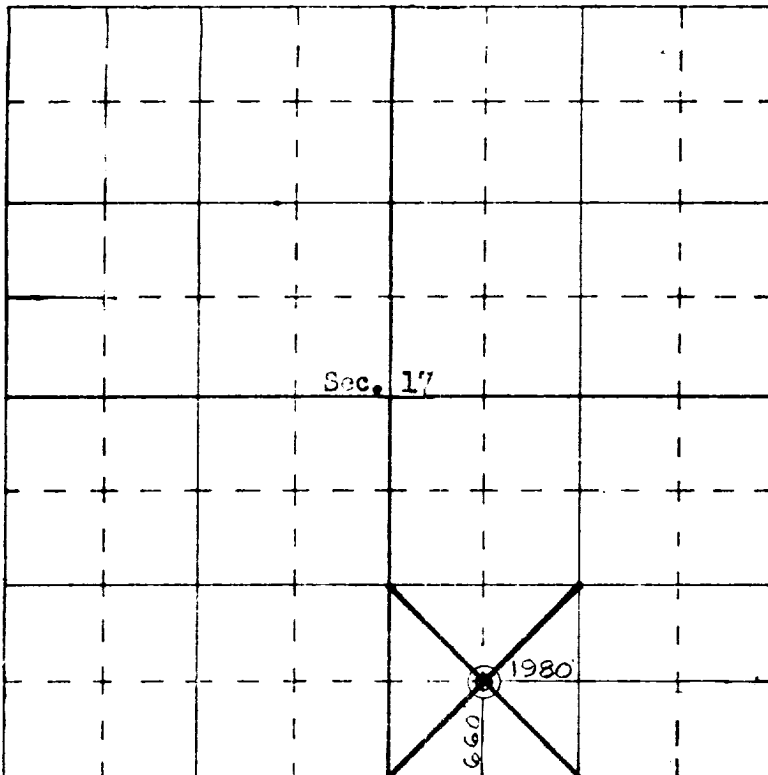
Date

James P. Leese
Registered Professional Engineer
and/or Land Surveyor

JAMES P. LEESE

1463

Certificate No.



SCALE-4 INCHES EQUALS 1 MILE

SAN JUAN ENGINEERING COMPANY, FARMINGTON, N. M.