

UNITED STATES  
DEPARTMENT OF THE INTERIOR  
GEOLOGICAL SURVEY

30-045-20738

## APPLICATION FOR PERMIT TO DRILL, DEEPEN, OR PLUG BACK

## 1a. TYPE OF WORK

DRILL ☒DEEPEN ☐PLUG BACK ☐

## b. TYPE OF WELL

OIL  
WELL ☐GAS  
WELL ☐

OTHER

SINGLE  
ZONE ☐MULTIPLE  
ZONE ☐

## 2. NAME OF OPERATOR

DAVIS OIL COMPANY

## 3. ADDRESS OF OPERATOR

1230 Denver Club Building - Denver, Colo. 80202

## 4. LOCATION OF WELL (Report location clearly and in accordance with any State requirements.\*)

At surface

SW/4 SW/4

At proposed prod. zone

660 FSL - 660 FWL of Sec. 26

## 14. DISTANCE IN MILES AND DIRECTION FROM NEAREST TOWN OR POST OFFICE\*

15. DISTANCE FROM PROPOSED\*  
LOCATION TO NEAREST  
PROPERTY OR LEASE LINE, FT.  
(Also to nearest drlg. unit line, if any)18. DISTANCE FROM PROPOSED LOCATION\*  
TO NEAREST WELL, DRILLING, COMPLETED  
OR APPLIED FOR, ON THIS LEASE, FT.

## 21. ELEVATIONS (Show whether DF, RT, GR, etc.)

6255 GR

## 16. NO. OF ACRES IN LEASE

## 19. PROPOSED DEPTH

4700'

17. NO. OF ACRES ASSIGNED  
TO THIS WELL

## 20. ROTARY OR CABLE TOOLS

Rotary

## 22. APPROX. DATE WORK WILL START\*

8-31-71

## 23. PROPOSED CASING AND CEMENTING PROGRAM

SIZE OF HOLE	SIZE OF CASING	WEIGHT PER FOOT	SETTING DEPTH	QUANTITY OF CEMENT
12 1/2"	8 5/8"	24#	60'	cemented to surface
If oil string is run, it will be 5 1/2" thru producing zone cemented to displace 600'.				

OBJECTIVE: Top of the Morrison Formation.

LOGGING: Induction Electrical Survey and BHC Formation Density log with Gamma Ray from base of surface casing to total depth. BHC Sonic log with Caliper over the Dakota formation.

MUD PROGRAM: Fresh water native mud which will be converted to a 10 cc water loss or less chemical base mud for drilling the Dakota.

Good oil field practice will be used in determining the necessity of coring and/or drill stem testing any shows of oil or gas encountered.

IN ABOVE SPACE DESCRIBE PROPOSED PROGRAM: If proposal is to deepen or plug back, give data on present productive zone and proposed new productive zone. If proposal is to drill or deepen directionally, give pertinent data on subsurface locations and measured and true vertical depths. Give blowout preventer program, if any.

24.

SIGNED

TITLE Geological Assistant

DATE

8-27-71

(This space for Federal or State office use)

PERMIT NO.

APPROVAL DATE

APPROVED BY

TITLE

DATE

CONDITIONS OF APPROVAL, IF ANY:

\*See Instructions On Reverse Side

# NEW MEXICO OIL CONSERVATION COMMISSION

## WELL LOCATION AND ACERAGE DEDICATION PLAT

All distances must be from the outer boundaries of the Section

Operator

DAVIS OIL COMPANY

ROULETTE

Well No.

1

County

Section

Range

Block

County

N

26

22 NORTH

10 WEST

SAN JUAN

Actual surface location of Well

660

feet from the

SOUTH

660

feet from the

WEST

line

Ground surface

6255.0

CRETACEOUS

WILDCAT

Estimated Acreage

40

Area

1. Outline the acreage dedicated to the subject well by natural or artificial marks on the plat below.

2. If more than one lease is owned to the well, outline each one, giving the ownership thereof (both as to working interest and royalty).

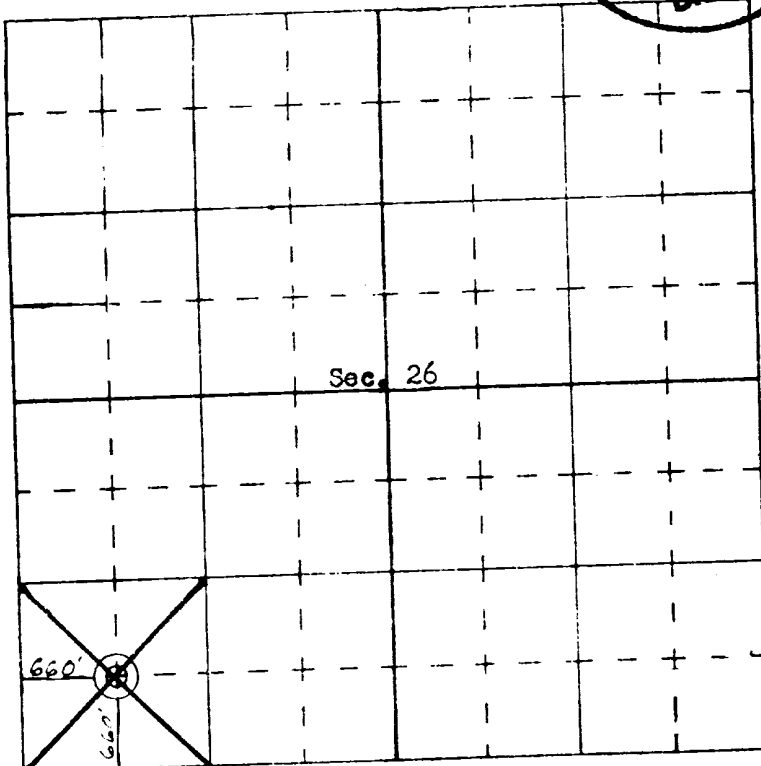
3. If more than one lease of different ownership is dedicated to the well, have the interests of all owners been consolidated by communitization, unitization, forced pooling, etc?

4. Yes ☐ No ☐ If answer is "yes," give a brief description of consolidation.

If answer is "no," list the owners and tract descriptions which have actually consolidated. U.S. reverse side of this form if necessary.

No allowable well be drilled to the well until all interests have been consolidated (by communitization, unitization, forced pooling, or otherwise) or until a non-standard unit, elimination of unit interests, has been approved by the Commission.

RECEIVED  
AUG 31 1971  
OIL CON. COM.  
DIST. 3



SCALE—4 INCHES EQUALS 1 MILE

### CERTIFICATION

I hereby certify that the information contained herein is true and complete to the best of my knowledge and belief.

Shelia Bergano

Name

Geological Assistant

Position

Davis Oil Company

Company

8-27-71

Date

Shelia Bergano

I hereby certify that the well location shown on this plat was plotted from field notes of actual surveys made by me or under my supervision, and that the same is true and correct to the best of my knowledge and belief.

7 July, 1971

Date

James P. Leese

Registered Professional Engineer  
and/or Land Surveyor

JAMES P. LEESE

1463

Certificate No.