

UNITED STATES
DEPARTMENT OF THE INTERIOR
GEOLOGICAL SURVEY

APPLICATION FOR PERMIT TO DRILL, DEEPEN OR PLUG BACK

12. TYPE OF WORK
DRILL ☒ DEEPEN ☐ PLUG BACK ☐

13. TYPE OF WELL
OIL WELL ☐ GAS WELL ☐ OTHER ☐ SINGLE ZONE ☐ MULTIPLE ZONE ☐

2. NAME OF OPERATOR
DAVIS OIL COMPANY

3. ADDRESS OF OPERATOR
1230 Denver Club Bldg. - Denver, Colorado 80202

4. LOCATION OF WELL (Report location clearly and in accordance with any State requirements.)*
At surface
NW/4 NW/4
At proposed prod. zone
660 FNL - 660 FWL of Sec. 27

14. DISTANCE IN MILES AND DIRECTION FROM NEAREST TOWN OR POST OFFICE*

15. DISTANCE FROM PROPOSED*
LOCATION TO NEAREST
PROPERTY OR LEASE LINE, FT.
(Also to nearest drlg. unit line, if any)

16. NO. OF ACRES IN LEASE
640.00

17. NO. OF ACRES ASSIGNED
TO THIS WELL
40

18. DISTANCE FROM PROPOSED LOCATION*
TO NEAREST WELL, DRILLING, COMPLETED,
OR APPLIED FOR, ON THIS LEASE, FT.

19. PROPOSED DEPTH
4800'

20. ROTARY OR CABLE TOOLS
Rotary

21. ELEVATIONS (Show whether DF, RT, GR, etc.)
6490 GR

22. APPROX. DATE WORK WILL START*
9-29-71

5. LEASE DESIGNATION AND SERIAL NO.
NM 0556381-A

6. IF INDIAN, ALLOTTEE OR TRIBE NAME

7. UNIT AGREEMENT NAME

8. FARM OR LEASE NAME
CHACE FEDERAL

9. WELL NO.
#1

10. FIELD AND POOL, OR WILDCAT
Wildcat / Morrison

11. SEC., T., R., & S., OR BLK.
AND SURVEY OR AREA
Sec. 27-21N-8W

12. COUNTY OR PARISH
San Juan

13. STATE
New Mexico

23. PROPOSED CASING AND CEMENTING PROGRAM				
SIZE OF HOLE	SIZE OF CASING	WEIGHT PER FOOT	SETTING DEPTH	QUANTITY OF CEMENT
12 1/2"	8 5/8"	24	60'	cemented to surface
If oil string is run, it will be 5 1/2" thru producing zone, cemented to displace 600'.				

OBJECTIVE: Top of the Morrison Formation.

LOGGING: Induction Electrical Survey and BHC Formation Density log with Gamma Ray from base of surface casing to total depth. BHC Sonic log with Caliper over the Dakota formation.

MUD PROGRAM: Fresh water native mud which will be converted to a 10 cc water loss or less chemical base mud for drilling the Dakota.

Good oil field practice will be used in determining the necessity of coring and/or drill stem testing any shows of oil or gas encountered.

IN ABOVE SPACE DESCRIBE PROPOSED PROGRAM: If proposal is to deepen or plug back, give data on present productive zone and proposed new productive zone. If proposal is to drill or deepen directionally, give pertinent data on subsurface locations and measured and true vertical depths. Give blowout preventer program, if any.

24.

SIGNED [Signature] TITLE Geological Assistant DATE 9-22-71

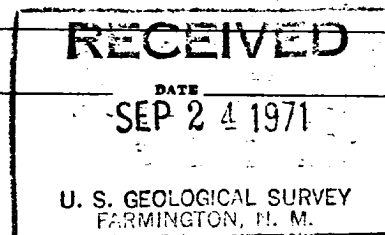
(This space for Federal or State office use)

PERMIT NO. _____ APPROVAL DATE _____

APPROVED BY [Signature] TITLE _____

CONDITIONS OF APPROVAL, IF ANY:

*See Instructions On Reverse Side





**NEW MEXICO OIL CONSERVATION COMMISSION
WELL LOCATION AND ACERAGE DEDICATION PLAT**

All distances must be from the outer boundaries of the Section

Operator DAVIS OIL COMPANY		Lease CHACE FEDERAL		Well No 1
Unit Letter D	Section 27	Township 21 NORTH	Range 8 WEST	County SAN JUAN
Actual Footage Location of Well: 660 feet from the NORTH line or 660 feet from the WEST line				
Ground Level Elev. 6490.0	Producing Formation CRETACEOUS Morrison		Dedicated Acreage 40 Acres	

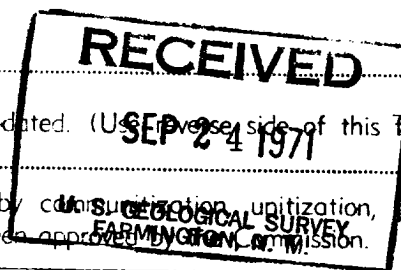
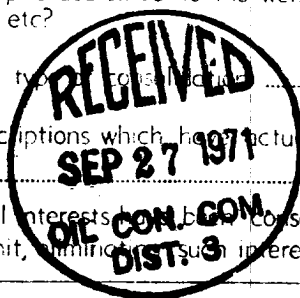
1. Outline the acreage dedicated to the subject well by colored pencil or hatchure marks on the plat below.
2. If more than one lease is dedicated to the well, outline each and identify the ownership thereof (both as to working interest and royalty).
3. If more than one lease of different ownership is dedicated to the well, have the interests of all owners been consolidated by communitization, unitization, force-pooling, etc?

() Yes () No

If answer is "yes," type of consolidation

If answer is "no," list the owners and tract descriptions which have actually consolidated. (Use reverse side of this form if necessary.)

No allowable will be assigned to the well until all interests have been consolidated (by communitization, unitization, force-pooling, or otherwise) or until a non standard unit, unitizing such interests, has been approved by the Commission.



CERTIFICATION

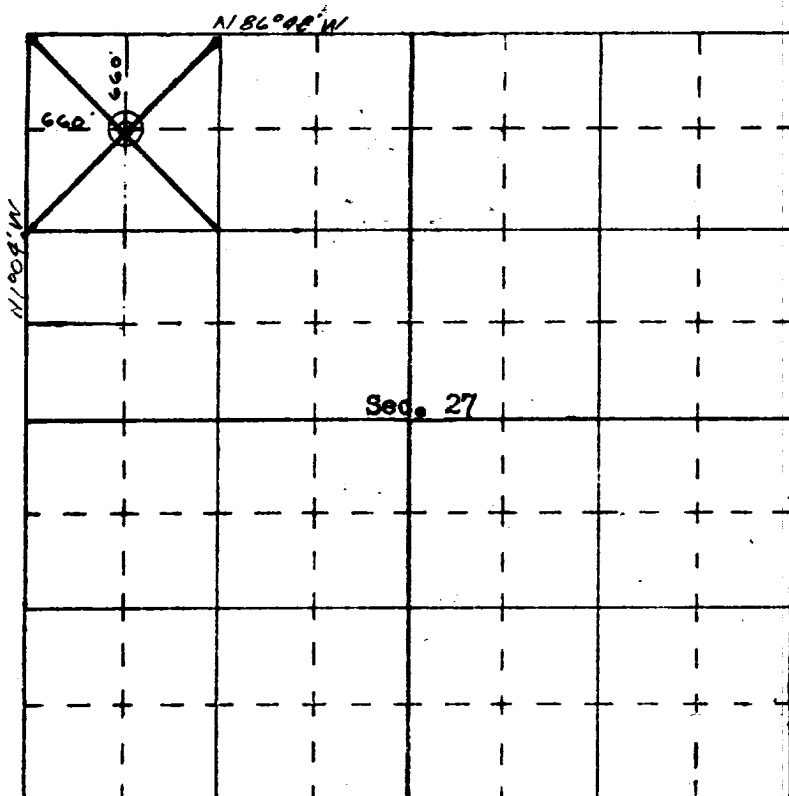
I hereby certify that the information contained herein is true and complete to the best of my knowledge and belief.

Shelia Bergano
Name
Geological Assistant
Position
Davis Oil Company
Company
9-22-71
Date

Shelia Bergano

I hereby certify that the well location shown on this plat was plotted from field notes of actual surveys made by me or under my supervision, and that the same is true and correct to the best of my knowledge and belief.

JAMES P. LEESE
 1463
 Certificate No.



SCALE—4 INCHES EQUALS 1 MILE

SAN JUAN ENGINEERING COMPANY, FARMINGTON, N. M.