

UNITED STATES
DEPARTMENT OF THE INTERIOR
GEOLOGICAL SURVEY

30-045-21713

APPLICATION FOR PERMIT TO DRILL, DEEPEN, OR PLUG BACK

1a. TYPE OF WORK

DRILL ☒DEEPEN ☐PLUG BACK ☐

b. TYPE OF WELL

OIL
WELL ☒GAS
WELL ☐

OTHER

SINGLE
ZONE ☐MULTIPLE
ZONE ☐

2. NAME OF OPERATOR

Tesoro Petroleum Corporation

3. ADDRESS OF OPERATOR

404 Fidelity Plaza
Oklahoma City, Oklahoma 73102

4. LOCATION OF WELL (Report location clearly and in accordance with any State requirements.)

At surface

1980' FSL & 790' FWL (NE/4; SE/4) Sec.

At proposed prod. zone

Same as above

14. DISTANCE IN MILES AND DIRECTION FROM NEAREST TOWN OR POST OFFICE*

4 1/2 mi. NNE of Tsaya N.M.

15. DISTANCE FROM PROPOSED*

LOCATION TO NEAREST
PROPERTY OR LEASE LINE, FT.
(Also to nearest drlg. unit line, if any)

790'

18. DISTANCE FROM PROPOSED LOCATION*
TO NEAREST WELL, DRILLING, COMPLETED,
OR APPLIED FOR, ON THIS LEASE, FT.

16. NO. OF ACRES IN LEASE

640

19. PROPOSED DEPTH

4750'

17. NO. OF ACRES ASSIGNED
TO THIS WELL

40

20. ROTARY OR CABLE TOOLS

Rotary

21. ELEVATIONS (Show whether DF, RT, GR, etc.)

6041 GL

22. APPROX. DATE WORK WILL START*

2-27-75

23.

PROPOSED CASING AND CEMENTING PROGRAM

SIZE OF HOLE	SIZE OF CASING	WEIGHT PER FOOT	SETTING DEPTH	QUANTITY OF CEMENT
12 1/4"	8 5/8"	24#	160'	200 sx. W/2% C Cl ₂
7 7/8"	4 1/2"	9.5#	4750'	200 sx. Pozmix

THE PROPOSED WILDCAT WILL BE DRILLED TO A TOTAL DEPTH OF APPROX. 4750' FL TO TEST THE DAKOTA FORMATION. A SECONDARY OBJECTIVE IS THE POINT LOOKOUT AT APPROX. 2225' FL; HOWEVER, ALL POTENTIAL HYDROCARBON ZONES WILL BE ADEQUATELY EVALUATED.

ADEQUATE BLOW OUT PREVENTION MEASURES WILL BE OBSERVED AT ALL TIMES.

IN ABOVE SPACE DESCRIBE PROPOSED PROGRAM: If proposal is to deepen or plug back, give data on present productive zone and proposed new productive zone. If proposal is to drill or deepen directionally, give pertinent data on subsurface locations and measured and true vertical depths. Give blowout preventer program, if any.

24.

SIGNED

J. L. Tally

TITLE

Dist. Drlg. Engineer

DATE

2-10-75

(This space for Federal or State office use)

PERMIT NO.

APPROVAL DATE

APPROVED BY

TITLE

DATE

CONDITIONS OF APPROVAL, IF ANY:

NEW MEXICO OIL CONSERVATION COMMISSION
WELL LOCATION AND ACREAGE DEDICATION PLAT

Form C-102
Supersedes C-128
Effective 1-1-65

All distances must be from the outer boundaries of the Section.

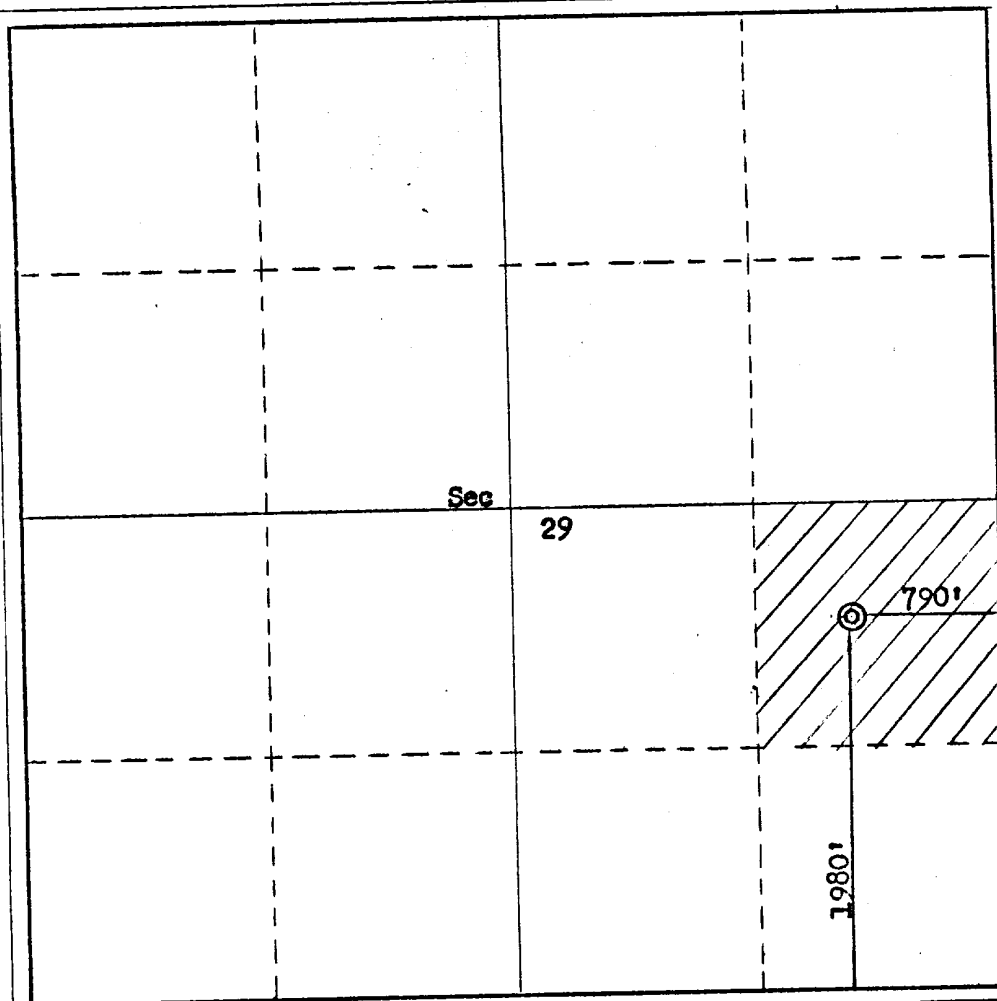
Operator Tesoro Petroleum Corporation			Lease Apache-Coalcreek-Federal		Well No. 1
Unit Letter I	Section 29	Township 23N	Range 12W	County San Juan	
Actual Footage Location of Well: 1980 feet from the South line and 790 feet from the East line					
Ground Level Elev. 6041	Producing Formation WILDCAT		Pool	Dedicated Acreage: 40 Acres	

1. Outline the acreage dedicated to the subject well by colored pencil or hachure marks on the plat below.
2. If more than one lease is dedicated to the well, outline each and identify the ownership thereof (both as to working interest and royalty).
3. If more than one lease of different ownership is dedicated to the well, have the interests of all owners been consolidated by communitization, unitization, force-pooling, etc?

☐ Yes ☐ No If answer is "yes," type of consolidation _____

If answer is "no," list the owners and tract descriptions which have actually been consolidated. (Use reverse side of this form if necessary.) _____

No allowable will be assigned to the well until all interests have been consolidated (by communitization, unitization, forced-pooling, or otherwise) or until a non-standard unit, eliminating such interests, has been approved by the Commission.



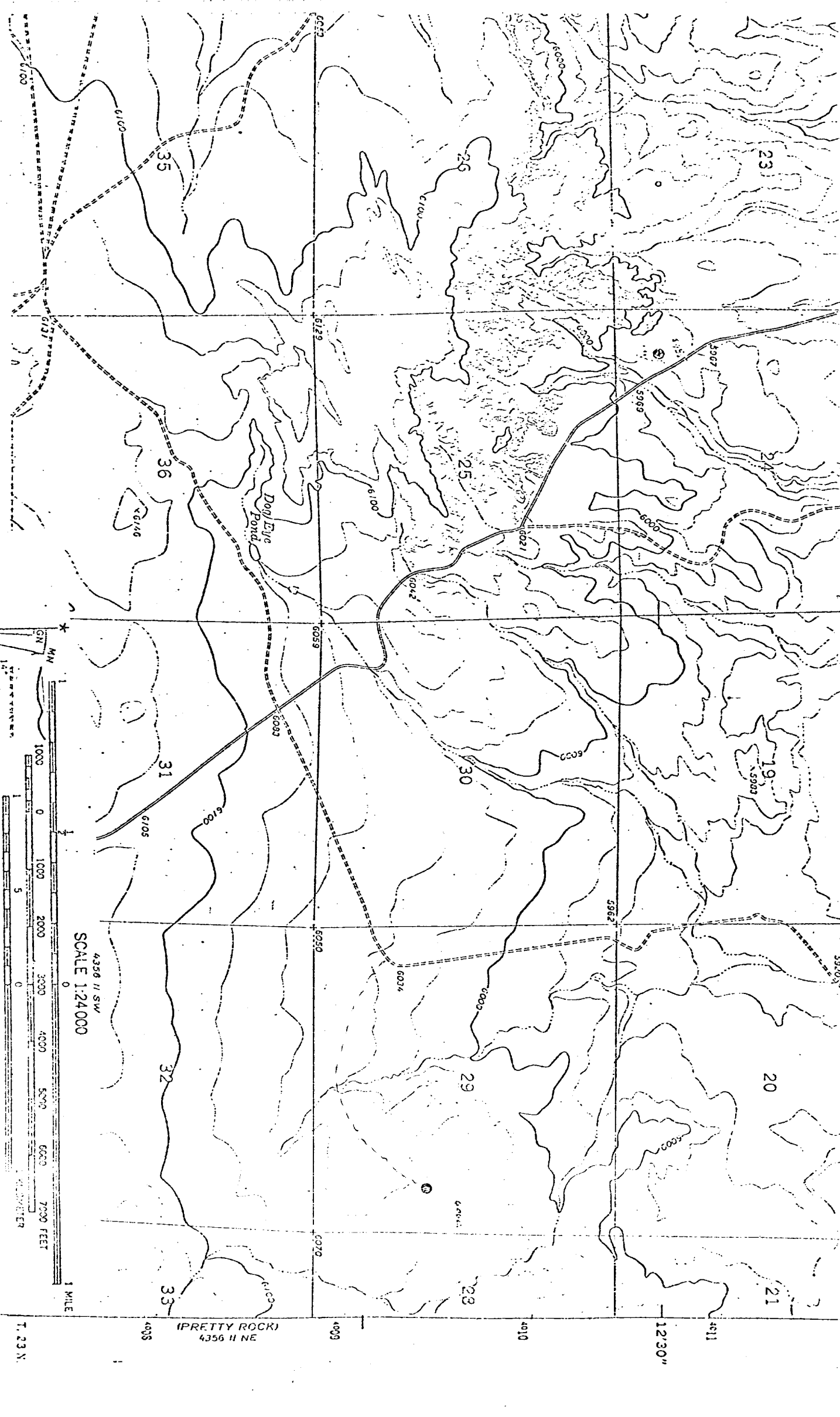
CERTIFICATION

I hereby certify that the information contained herein is true and complete to the best of my knowledge and belief.

Name Robert L.G. Watson
Position PROD. SUPT. - PETR. ENGR.
Company TESORO PETROLEUM CORP.
Date FEB. 20, 1975

I hereby certify that the well location shown on this plat was plotted from field notes of actual surveys made by me or under my supervision, and that the same is true and correct to the best of my knowledge and belief.

Date Surveyed February 17, 1975
Registered Professional Engineer and/or Land Surveyor
Fred B. Kern Jr.
Certificate No. 3950



TANNER LAKE, N. MEX.

N3607.5 W10807.5/7.5

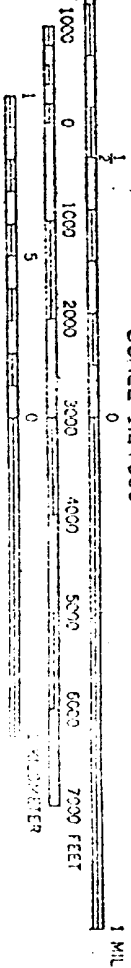
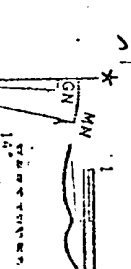
1966

UTM GRID AND 1966 MAGNETIC NORTH

1:24,000

1:24,000

1:24,000



1 MILE

(PRETTY ROCK)
4356 II NE

CONTOUR INTERVAL 20 FEET
DATUM IS MEAN SEA LEVEL
ROAD CLASSIFICATION