

UNITED STATES
DEPARTMENT OF THE INTERIOR
GEOLOGICAL SURVEY

30-045-21890

APPLICATION FOR PERMIT TO DRILL, DEEPEN, OR PLUG BACK

5. LEASE DESIGNATION AND SERIAL NO.

NM 13049

6. IF INDIAN, ALLOTTEE OR TRIBE NAME

7. UNIT AGREEMENT NAME

8. FARM OR LEASE NAME

Federal 26E

9. WELL NO.

#1

10. FIELD AND POOL, OR WILDCAT

Wildcat *Jurassic*11. SEC., T., R., or BLK.
AND SURVEY OR AREA

SEC. 26, T23N, R9W

12. COUNTY OR PARISH 13. STATE

San Juan N.M.

1a. TYPE OF WORK

DRILL ☒DEEPEN ☐PLUG BACK ☐

b. TYPE OF WELL

OIL
WELL ☒GAS
WELL ☐

OTHER

SINGLE
ZONE ☒MULTIPLE
ZONE ☐

2. NAME OF OPERATOR

FILON EXPLORATION CORPORATION c/o Minerals Management Inc.

3. ADDRESS OF OPERATOR

501 Airport Dr., Suite 210, Farmington, New Mexico 87401

4. LOCATION OF WELL (Report location clearly and in accordance with any State requirements.)*

At surface

1650' FSL, 330' FWL, SEC. 26, T23N, R9W
At proposed prod. zone

14. DISTANCE IN MILES AND DIRECTION FROM NEAREST TOWN OR POST OFFICE*

5 miles South of Nageezi, New Mexico

15. DISTANCE FROM PROPOSED*

LOCATION TO NEAREST
PROPERTY OR LEASE LINE, FT.
(Also to nearest drlg. unit line, if any) -

16. NO. OF ACRES IN LEASE

1280

17. NO. OF ACRES ASSIGNED
TO THIS WELL

40

18. DISTANCE FROM PROPOSED LOCATION*
TO NEAREST WELL, DRILLING, COMPLETED,
OR APPLIED FOR, ON THIS LEASE, FT. -

19. PROPOSED DEPTH

6700'

20. ROTARY OR CABLE TOOLS

Rotary

21. ELEVATIONS (Show whether DF, RT, GR, etc.)

6661 GR

22. APPROX. DATE WORK WILL START*

October 15, 1975

23.

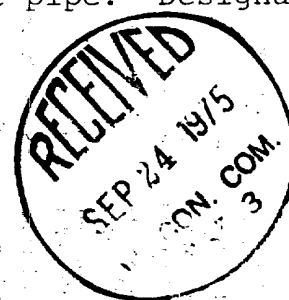
PROPOSED CASING AND CEMENTING PROGRAM

SIZE OF HOLE	SIZE OF CASING	WEIGHT PER FOOT	SETTING DEPTH	QUANTITY OF CEMENT
15"	10 3/4"	40.5#	200	250 sx
8 3/4"	7"	23-26#	6700	300-500 sx (2 stage)

Filon Exploration Corporation (Operator) proposes a Jurassic test to 6700'. Completion will be determined from logs. A Series 900 (3000 psi w p) blowout preventer will be used under surface pipe. Designation of operator will be filed.

RECEIVED

SEP 23 1975

U. S. GEOLOGICAL SURVEY
FARMINGTON, N. M.

IN ABOVE SPACE DESCRIBE PROPOSED PROGRAM: If proposal is to deepen or plug back, give data on present productive zone and proposed new productive zone. If proposal is to drill or deepen directionally, give pertinent data on subsurface locations and measured and true vertical depths. Give blowout preventer program, if any.

24.

SIGNED

J. Arnold Smith

TITLE

Area Manager

Minerals Management Inc.

DATE

9-17-75

(This space for Federal or State office use)

PERMIT NO.

APPROVAL DATE

APPROVED BY

TITLE

DATE

CONDITIONS OF APPROVAL, IF ANY:

clal

*See Instructions On Reverse Side

MEXICO OIL CONSERVATION COMMISS
WELL LOCATION AND ACREAGE DEDICATION PLAT

Form C-102
Supersedes C-128
Effective 1-1-65

All distances must be from the outer boundaries of the Section.

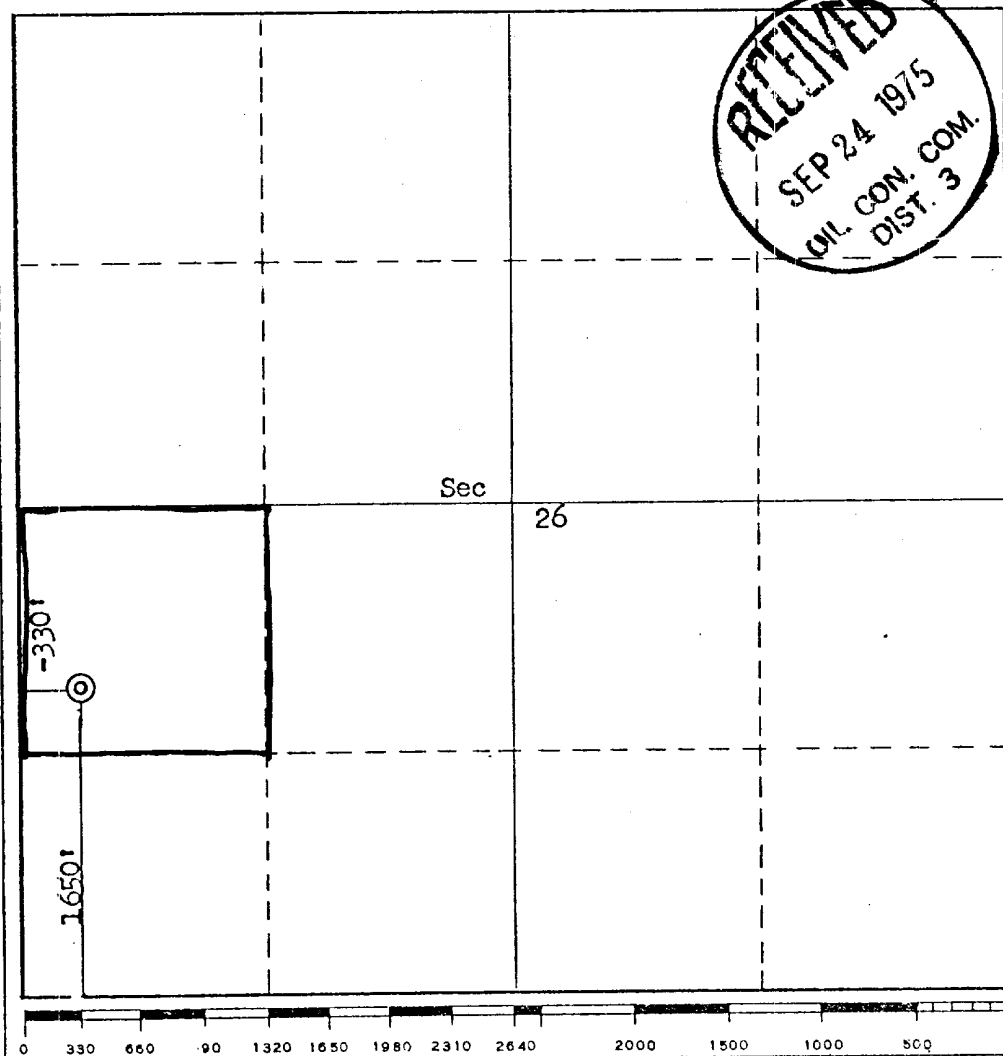
Operator Filon Exploration			Lease Filon-Federal 26E		Well No. #1
Unit Letter L	Section 26	Township 23N	Range 9W	County San Juan	
Actual Footage Location of Well: 1650 feet from the South line and 330 feet from the West line					
Ground Level Elev. 6661	Producing Formation Jurassic		Pool Wildcat ✓	Dedicated Acreage: 40 Acres	

1. Outline the acreage dedicated to the subject well by colored pencil or hatchure marks on the plat below.
2. If more than one lease is dedicated to the well, outline each and identify the ownership thereof (both as to working interest and royalty).
3. If more than one lease of different ownership is dedicated to the well, have the interests of all owners been consolidated by communitization, unitization, force-pooling, etc?

☐ Yes ☐ No If answer is "yes," type of consolidation _____

If answer is "no," list the owners and tract descriptions which have actually been consolidated. (Use reverse side of this form if necessary.) _____

No allowable will be assigned to the well until all interests have been consolidated (by communitization, unitization, forced-pooling, or otherwise) or until a non-standard unit, eliminating such interests, has been approved by the Commission.



CERTIFICATION

I hereby certify that the information contained herein is true and complete to the best of my knowledge and belief.

Name J. Arnold Sull
Position
Area Manager
Company
Minerals Management Inc.
Date
September 17, 1975

I hereby certify that the well location shown on this plat was plotted from field notes of actual surveys made by me or under my supervision, and that the same is true and correct to the best of my knowledge and belief.

Date Surveyed
August 26, 1975
Registered Professional Engineer
and/or Land Surveyor
Fred B. Kerr
Certificate No.
3950

DEPARTMENT OF THE INTERIOR
GEOLOGICAL SURVEY

BLUOMFIELD 30 MI.
NADZETI 1.2 MI.

R. 9 W. 74 N. E.

355

R. 8 W.

756

4230"

57

