

UNITED STATES  
DEPARTMENT OF THE INTERIOR  
GEOLOGICAL SURVEY

30-045-22155

## APPLICATION FOR PERMIT TO DRILL, DEEPEN, OR PLUG BACK

## 1a. TYPE OF WORK

DRILL ☒DEEPEN ☐PLUG BACK ☐

## b. TYPE OF WELL

OIL  
WELL ☐GAS  
WELL ☒

OTHER

SINGLE  
ZONE ☒MULTIPLE  
ZONE ☐

## 2. NAME OF OPERATOR

Dome Petroleum Corporation

## 3. ADDRESS OF OPERATOR c/o Minerals Management Inc.

501 Airport Dr., Suite 105, Farmington, N.M. 87401

## 4. LOCATION OF WELL (Report location clearly and in accordance with any State requirements.)\*

At surface

1800' FSL, 1450' FWL, SEC. 9, T22N, R8W

At proposed prod. zone

## 14. DISTANCE IN MILES AND DIRECTION FROM NEAREST TOWN OR POST OFFICE\*

7 miles south of 44 Store Trading Post

## 15. DISTANCE FROM PROPOSED\*

LOCATION TO NEAREST  
PROPERTY OR LEASE LINE, FT.  
(Also to nearest drlg. unit line, if any)

1450'

18. DISTANCE FROM PROPOSED LOCATION\*  
TO NEAREST WELL, DRILLING, COMPLETED,  
OR APPLIED FOR, ON THIS LEASE, FT.

-

## 16. NO. OF ACRES IN LEASE

1721.34

## 19. PROPOSED DEPTH

2000'

17. NO. OF ACRES ASSIGNED  
TO THIS WELL

160

## 20. ROTARY OR CABLE TOOLS

Rotary

## 21. ELEVATIONS (Show whether DF, RT, GR, etc.)

6788 GR

## 22. APPROX. DATE WORK WILL START\*

9-15-76

## 23.

## PROPOSED CASING AND CEMENTING PROGRAM

SIZE OF HOLE	SIZE OF CASING	WEIGHT PER FOOT	SETTING DEPTH	QUANTITY OF CEMENT
12 1/4"	8 5/8"	24#	100	100 sx
7 7/8"	4 1/2"	10.5#	2000	350 sx

Operator proposes to drill a Chacra test to 2000'. Completion will be determined from well logs. A 3000 psi (Series 900) blowout preventer will be used. The well will be mud drilled.

AUG 6 1976

AUG 17 1976

DIST. 3

Gas not dedicated

IN ABOVE SPACE DESCRIBE PROPOSED PROGRAM: If proposal is to deepen or plug back, give data on present productive zone and proposed new productive zone. If proposal is to drill or deepen directionally, give pertinent data on subsurface locations and measured and true vertical depths. Give blowout preventer program, if any.

## 24.

SIGNED

J. Arnold Smith

Area Manager

TITLE Minerals Management Inc DATE 8-4-76

(This space for Federal or State office use)

PERMIT NO.

APPROVAL DATE

APPROVED BY

TITLE

DATE

CONDITIONS OF APPROVAL, IF ANY:

OK

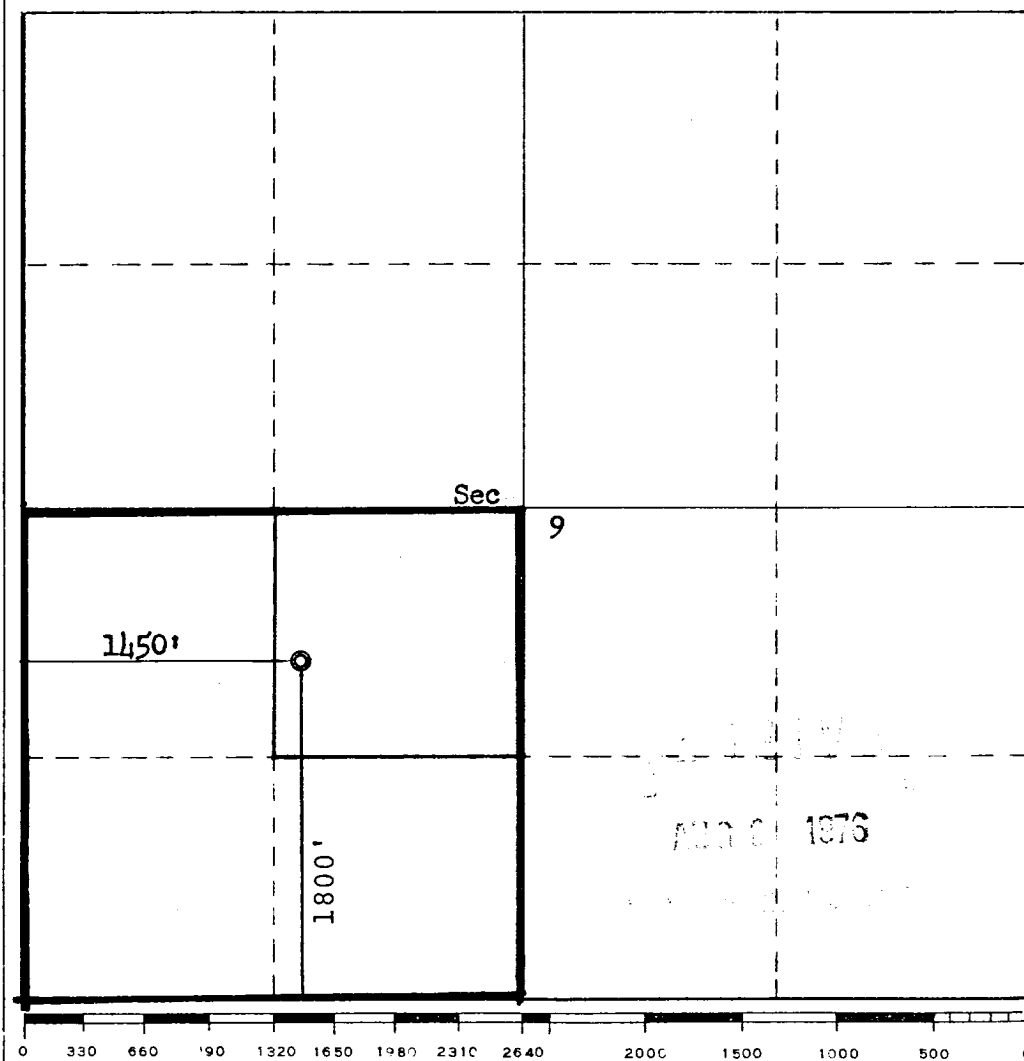
\*See Instructions On Reverse Side

NEW MEXICO OIL CONSERVATION COMMISSION  
WELL LOCATION AND ACREAGE DEDICATION PLAT

Form C-102  
Supersedes C-128  
Effective 1-1-65

All distances must be from the outer boundaries of the Section.

Operator <u>DOME PETROLEUM CORP,</u> <del>Pilon Exploration Corporation</del>			Lease <u>Federal 9</u>		Well No. <u>1</u>
Unit Letter <b>K</b>	Section <b>9</b>	Township <b>22N</b>	Range <b>8W</b>	County <b>San Juan</b>	
Actual Footage Location of Well:					
<b>1800</b> feet from the <b>South</b> line and		<b>1450</b> feet from the <b>West</b> line			
Ground Level Elev. <b>6788</b>	Producing Formation <b>Chacra</b>	Pool <b>Wildcat</b>	Dedicated Acreage: <b>160</b> Acres		
<p>1. Outline the acreage dedicated to the subject well by colored pencil or hatchure marks on the plat below.</p> <p>2. If more than one lease is dedicated to the well, outline each and identify the ownership thereof (both as to working interest and royalty).</p> <p>3. If more than one lease of different ownership is dedicated to the well, have the interests of all owners been consolidated by communitization, unitization, force-pooling, etc?</p> <p><input type="checkbox"/> Yes   <input type="checkbox"/> No   If answer is "yes," type of consolidation _____</p> <p>If answer is "no," list the owners and tract descriptions which have actually been consolidated. (Use reverse side of this form if necessary.) _____</p> <p>No allowable will be assigned to the well until all interests have been consolidated (by communitization, unitization, forced-pooling, or otherwise) or until a non-standard unit, eliminating such interests, has been approved by the Commission.</p>					



CERTIFICATION	
I hereby certify that the information contained herein is true and complete to the best of my knowledge and belief.	
Name	<u>J. Arnold Juel</u>
Position	<u>Area Manager</u>
Company	<u>Minerals Management Inc.</u>
Date	<u>August 4, 1976</u>
I hereby certify that the well location shown on this plat was plotted from field notes of actual surveys made by me or under my supervision, and that the same is true and correct to the best of my knowledge and belief.	
Date Surveyed	<u>July 28, 1976</u>
Registered Professional Engineer and/or Land Surveyor <u>Fred B. Kerr Jr.</u>	
Certificate No.	<u>3950</u>