

UNITED STATES
DEPARTMENT OF THE INTERIOR
GEOLOGICAL SURVEY

APPLICATION FOR PERMIT TO DRILL, DEEPEN, OR PLUG BACK

1a. TYPE OF WORK

DRILL ☒DEEPEN ☐PLUG BACK ☐

b. TYPE OF WELL

OIL
WELL ☐GAS
WELL ☐

OTHER *Strat Test

SINGLE
ZONE ☐MULTIPLE
ZONE ☐

2. NAME OF OPERATOR

Mobil Oil Corporation

3. ADDRESS OF OPERATOR

P. O. Box 633, Midland, Texas 79701

4. LOCATION OF WELL (Report location clearly and in accordance with any State requirements*)

At surface

729.8' FNL & 821' FEL, Sec. 4, T21N, R15W

At proposed prod. zone *

14. DISTANCE IN MILES AND DIRECTION FROM NEAREST TOWN OR POST OFFICE*

10. DISTANCE FROM PROPOSED*

LOCATION TO NEAREST

PROPERTY OR LEASE LINE, FT.

(Also to nearest drlg. unit line, if any)

18. DISTANCE FROM PROPOSED LOCATION*

TO NEAREST WELL, DRILLING, COMPLETED,
OR APPLIED FOR, ON THIS LEASE, FT.

21. ELEVATIONS (Show whether DF, RT, GR, etc.)

5951.1' Ground

23.

PROPOSED CASING AND CEMENTING PROGRAM

SIZE OF HOLE	SIZE OF CASING	WEIGHT PER FOOT	SETTING DEPTH	QUANTITY OF CEMENT
8-3/4"	7"	17# - H-40	300'	Circulate to surface
5-5/8-6-1/4"	Open Hole	-	-	with Class A Cement

MUD PROGRAM:

From	To	Type Mud	Weight	Viscosity	PH	Water Loss
0	300'	Spud Mud	No Control			
300'	T.D.	Fresh Water w/additions of Gel as necessary	9.0-10.5	30-45	9+	NC

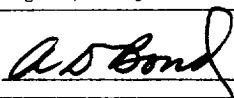
DIAGRAMMATIC SKETCH OF BLOWOUT PREVENTER ATTACHED

*This well to be drilled for information only and will not be produced.

IN ABOVE SPACE DESCRIBE PROPOSED PROGRAM: If proposal is to deepen or plug back, give data on present productive zone and proposed new productive zone. If proposal is to drill or deepen directionally, give pertinent data on subsurface locations and measured and true vertical depths. Give blowout preventer program, if any.

24.

SIGNED



A. D. Bond

TITLE

Proration Staff Assistant

DATE

April 24, 1975

(This space for Federal or State office use)

PERMIT NO.

APPROVAL DATE

APPROVED BY

TITLE

DATE

CONDITIONS OF APPROVAL, IF ANY:

NEW MEXICO OIL CONSERVATION COMMISSION
WELL LOCATION AND ACREAGE DEDICATION PLAT

Form C-102
Supersedes C-128
Effective 1-1-65

All distances must be from the outer boundaries of the Section.

Operator Mobil Oil Corporation			Lease Navajo "B"		Well No. 1
Unit Letter A	Section 4	Township 21N	Range 15W	County San Juan	
Actual Footage Location of Well: 729.8 feet from the North line and 821 feet from the East line					
Ground Level Elev. 5951.1	Producing Formation Dakota	Pool Wildcat	Dedicated Acreage: Strat Test Acres		

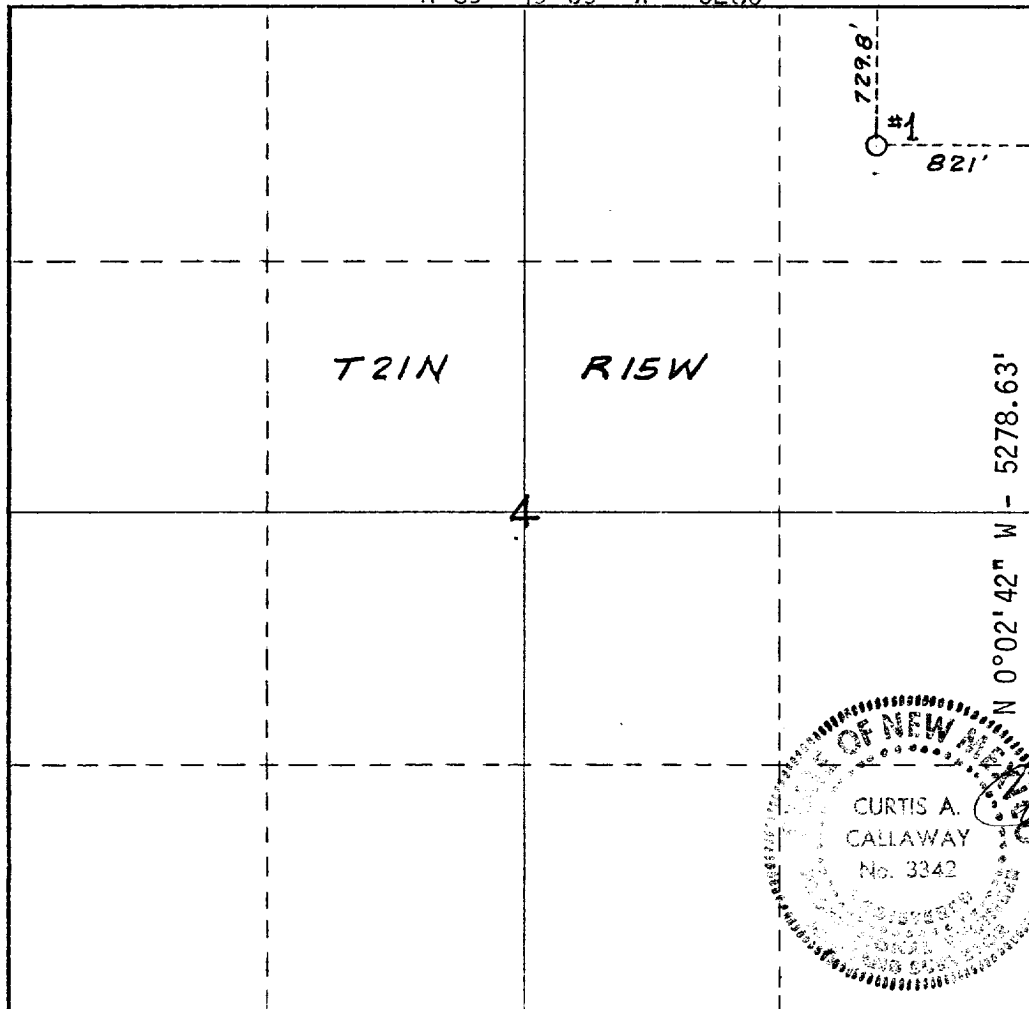
1. Outline the acreage dedicated to the subject well by colored pencil or hachure marks on the plat below.
2. If more than one lease is dedicated to the well, outline each and identify the ownership thereof (both as to working interest and royalty).
3. If more than one lease of different ownership is dedicated to the well, have the interests of all owners been consolidated by communitization, unitization, force-pooling, etc?

☐ Yes ☐ No If answer is "yes," type of consolidation _____

If answer is "no," list the owners and tract descriptions which have actually been consolidated. (Use reverse side of this form if necessary.) _____

No allowable will be assigned to the well until all interests have been consolidated (by communitization, unitization, forced-pooling, or otherwise) or until a non-standard unit, eliminating such interests, has been approved by the Commission.

N 89° 49' 59" W - 5280'



CERTIFICATION

I hereby certify that the information contained herein is true and complete to the best of my knowledge and belief.

A. D. Bond
Name
A. D. Bond
Position
Proration Staff Assistant
Company
Mobil Oil Corporation
Date
April 24, 1975

I hereby certify that the well location shown on this plat was plotted from field notes of actual surveys made by me or under my supervision, and that the same is true and correct to the best of my knowledge and belief.

Curtis A. Callaway
Date Surveyed
April 2, 1975
Registered Professional Engineer and/or Land Surveyor
Curtis A. Callaway
Certificate No.
3342