

UNITED STATES  
DEPARTMENT OF THE INTERIOR

## GEOLOGICAL SURVEY

## APPLICATION FOR PERMIT TO DRILL, DEEPEN, OR PLUG BACK

## 1a. TYPE OF WORK

DRILL ☒DEEPEN ☐PLUG BACK ☐

## b. TYPE OF WELL

OIL  
WELL ☐GAS  
WELL ☐OTHER WildcatSINGLE  
ZONE ☐MULTIPLE  
ZONE ☐

## 2. NAME OF OPERATOR

San Juan Venture

## 3. ADDRESS OF OPERATOR

6207 NW Expressway, Oklahoma City, Ok. 73132

## 4. LOCATION OF WELL (Report location clearly and in accordance with any State requirements.)\*

At surface

2214' FWL, 717' FSL

At proposed prod. zone

Same

## 14. DISTANCE IN MILES AND DIRECTION FROM NEAREST TOWN OR POST OFFICE\*

Approx. 9 miles south of 44 store on NM Hwy 44

## 15. DISTANCE FROM PROPOSED\*

LOCATION TO NEAREST

PROPERTY OR LEASE LINE, FT.  
(Also to nearest drig. unit line, if any)

## 18. DISTANCE FROM PROPOSED LOCATION\*

TO NEAREST WELL, DRILLING, COMPLETED,  
OR APPLIED FOR, ON THIS LEASE, FT.

## 16. NO. OF ACRES IN LEASE

1600

## 19. PROPOSED DEPTH

1450'

## 17. NO. OF ACRES ASSIGNED

TO THIS WELL

160

## 20. ROTARY OR CABLE TOOLS

Rotary

## 21. ELEVATIONS (Show whether DF, RT, GR, etc.)

6643' GL

## 22. APPROX. DATE WORK WILL START\*

## 23.

## PROPOSED CASING AND CEMENTING PROGRAM

SIZE OF HOLE	SIZE OF CASING	WEIGHT PER FOOT	SETTING DEPTH	QUANTITY OF CEMENT
<u>8 3/4"</u>	<u>7"</u>	<u>23#</u>	<u>30'</u>	<u>Circ</u>
<u>6 1/4"</u>	<u>4 1/2"</u>	<u>9.5#</u>	<u>1450'</u>	<u>140 sx Circ.</u>

Rig up rotary tools. Drill 8 5/8" hole to 30' 7" used casing, cement to surface. Drill 6 1/4" hole to 1450'. Mud system gel-chemical, characteristics 9.0 - 9.7# per gallon, water loss 7-12 cc, viscosity 30-40 seconds. At ID, ES will be run. 4 1/2" casing will be run, cemented as above, and first perforated 1397-99 and 1400-03 (Chacra), perf, acid and frac. If non-commercial, light squeeze, perf, acid and frac. La Ventana 1264-66, 1270-72 and 1276-79. If non-commercial, light squeeze, perf, acid and frac. La Ventana 1163-66, 1174-77 and 1183-86. Poss above procedure La Ventana 1066-69, 1075-78, 1089-92 and Pictured Cliffs 698-706

## Estimated Tops

Pictured Cliffs 690'  
La Ventana 1052'  
Chacra 1353'

*Gas not dedicated*  
IN ABOVE SPACE DESCRIBE PROPOSED PROGRAM: If proposal is to deepen or plug back, give data on present productive zone and proposed new productive zone. If proposal is to drill or deepen directionally, give pertinent data on subsurface locations and measured and true vertical depths. Give blowout preventer program, if any.

## 24.

SIGNED

TITLE

(This space for Federal or State office use)

PERMIT NO.

APPROVAL DATE

APPROVED BY

TITLE

DATE

CONDITIONS OF APPROVAL, IF ANY

RECEIVED

DEC 9 1977

\*See Instructions On Reverse Side

U.S. Geological Survey  
Farmington, N.M.

NEW MEXICO OIL CONSERVATION COMMISSION  
WELL LOCATION AND ACREAGE DEDICATION PLAT

Form O-102  
Supersedes O-128  
Effective 1-1-65

All distances must be from the outer boundaries of the Section

San Juan Ventures			Midway	2
N	22	22N	8W	San Juan

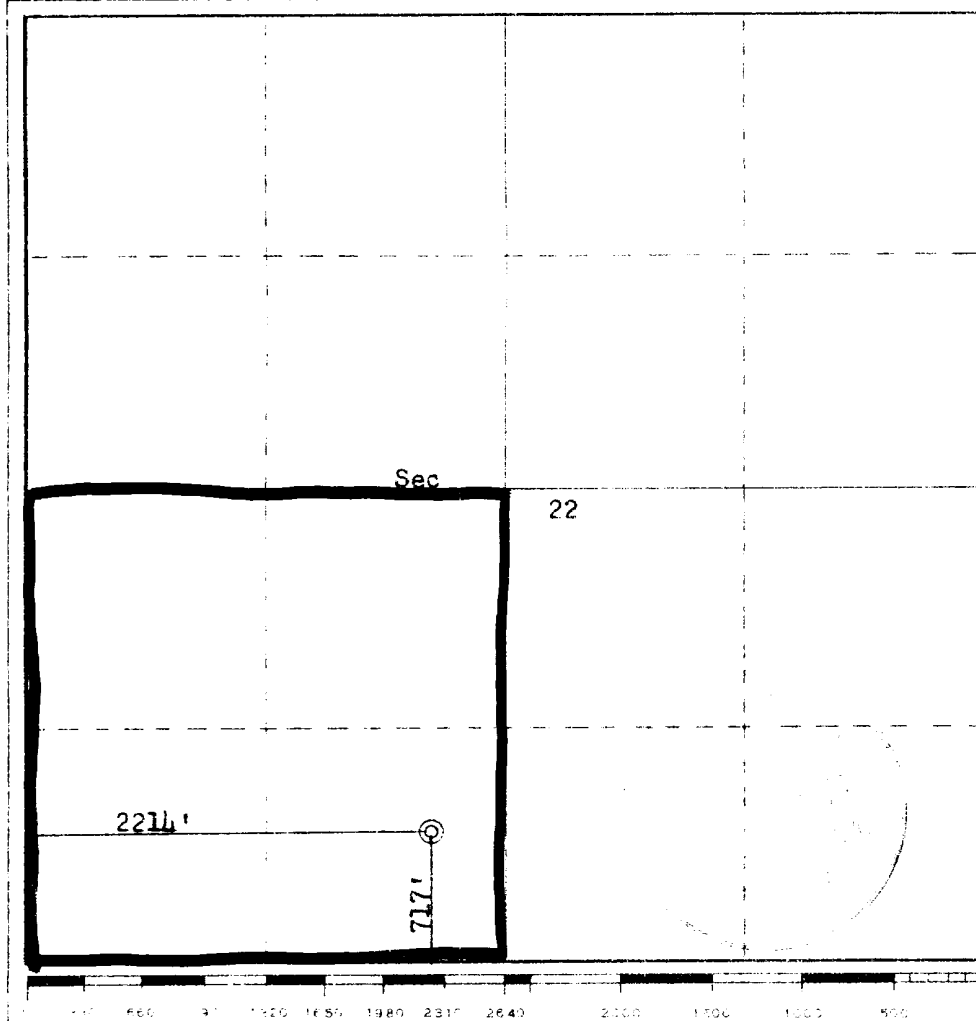
717	South	2214	West
6643	Chaora	Willcox	160

- Outline the acreage dedicated to the subject well by colored pencil or hatchure marks on the plat below.
- If more than one lease is dedicated to the well, outline each and identify the ownership thereof (both as to working interest and royalty).
- If more than one lease of different ownership is dedicated to the well, have the interests of all owners been consolidated by communitization, unitization, force-pooling, etc?

☐ Yes ☐ No If answer is "yes," type of consolidation \_\_\_\_\_

If answer is "no," list the owners and tract descriptions which have actually been consolidated. (Use reverse side of this form if necessary.) \_\_\_\_\_

No allowable will be assigned to the well until all interests have been consolidated (by communitization, unitization, forced-pooling, or otherwise) or until a non-standard unit, eliminating such interests, has been approved by the Commission.



CERTIFICATION

I hereby certify that the information contained herein is true and complete to the best of my knowledge and belief.

Warren E. Carr  
Agent  
San Juan Ventures  
December 10, 1977

I hereby certify that the well location shown on this plat was plotted from field notes of actual surveys made by me or under my supervision, and that the same is true and correct to the best of my knowledge and belief.

December 8, 1977

Registered Professional Surveyor  
and Oil Geophysicist

Fred B. Kerr Jr.

3950

SAN JUAN VENTURE  
6207 NW Expressway  
Oklahoma City, Oklahoma 73132

December 9, 1977

U. S. Department of Interior  
Geological Survey  
P. O. Box 959  
Farmington, NM 87401

Attention: Mr. Phil T. McGrath  
District Engineer

RE: Development Plan for Surface  
Use  
San Juan Venture  
Midway #2  
717' FSL and 2214' FWL  
Sec. 22, T22N, R8W  
Wildcat  
San Juan County, New Mexico

Gentlemen:

Attached for your approval is Form No. 9-331 C (Application for Permit to Drill), for a wildcat well to be drilled as captioned above. Also included are a location plat and vicinity map. A prior archeological report had been previously conducted in the immediate area related to the George E. Coleman #1 Midway, located approximately 370' west of this location.

An attempt to re-enter the Coleman well was made, without success, in late November. This test will be plugged in accordance with Federal and State specifications.

Points 1, 2, 3, 4, 6. Vicinity Map and drillsite plat attached.

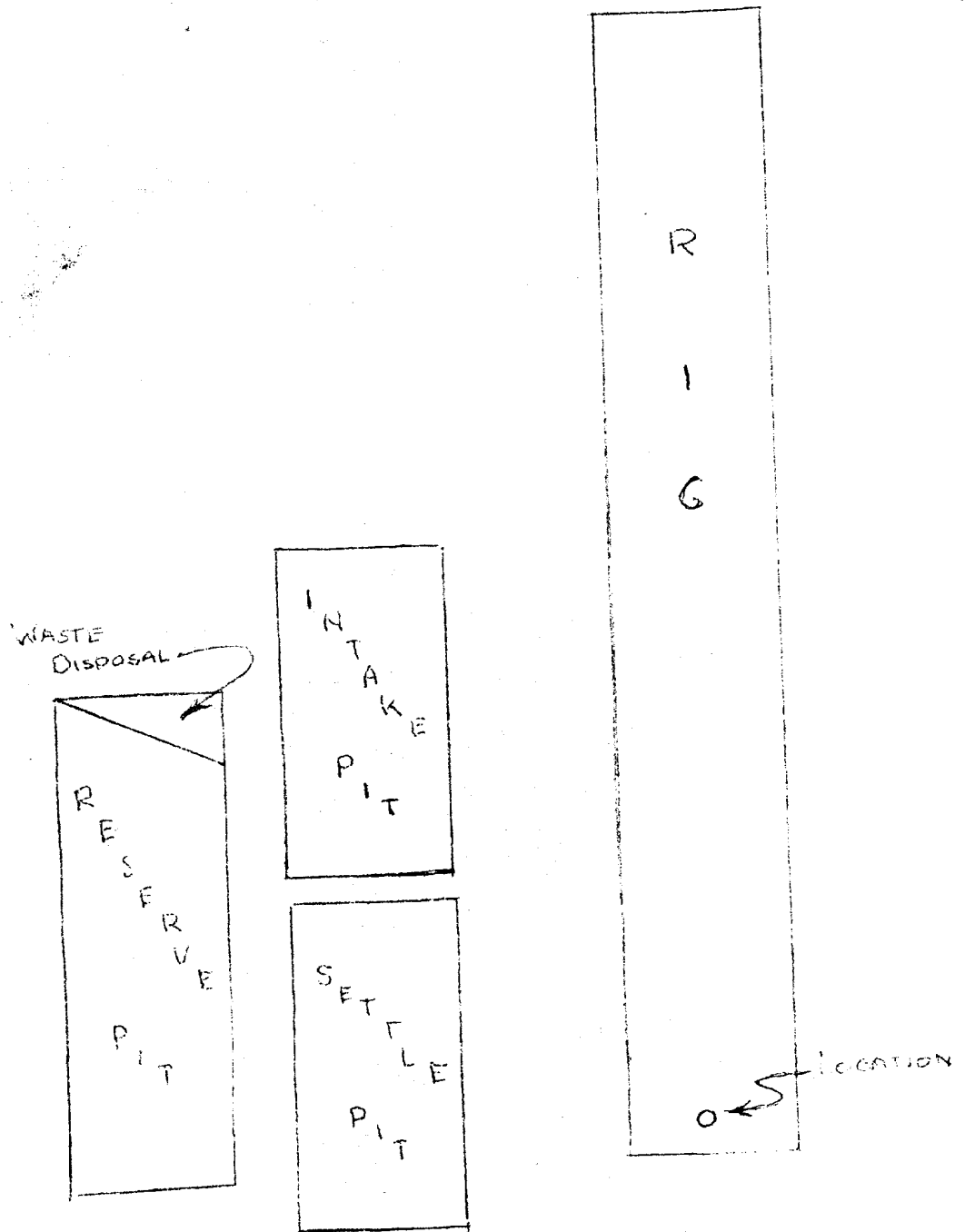
Point 5. Water for drilling will be hauled from Val Chapman water hole located between 44 Store and Escrito.

Point 7. A waste disposal pit will be provided for garbage and trash. Location is shown on drillsite plat. Drilling fluids will be contained in the reserve pit until such time as evaporation occurs, and then pits will be covered. During dry out, pits will be fenced to eliminate livestock entry.

# LOCATION DIAGRAM

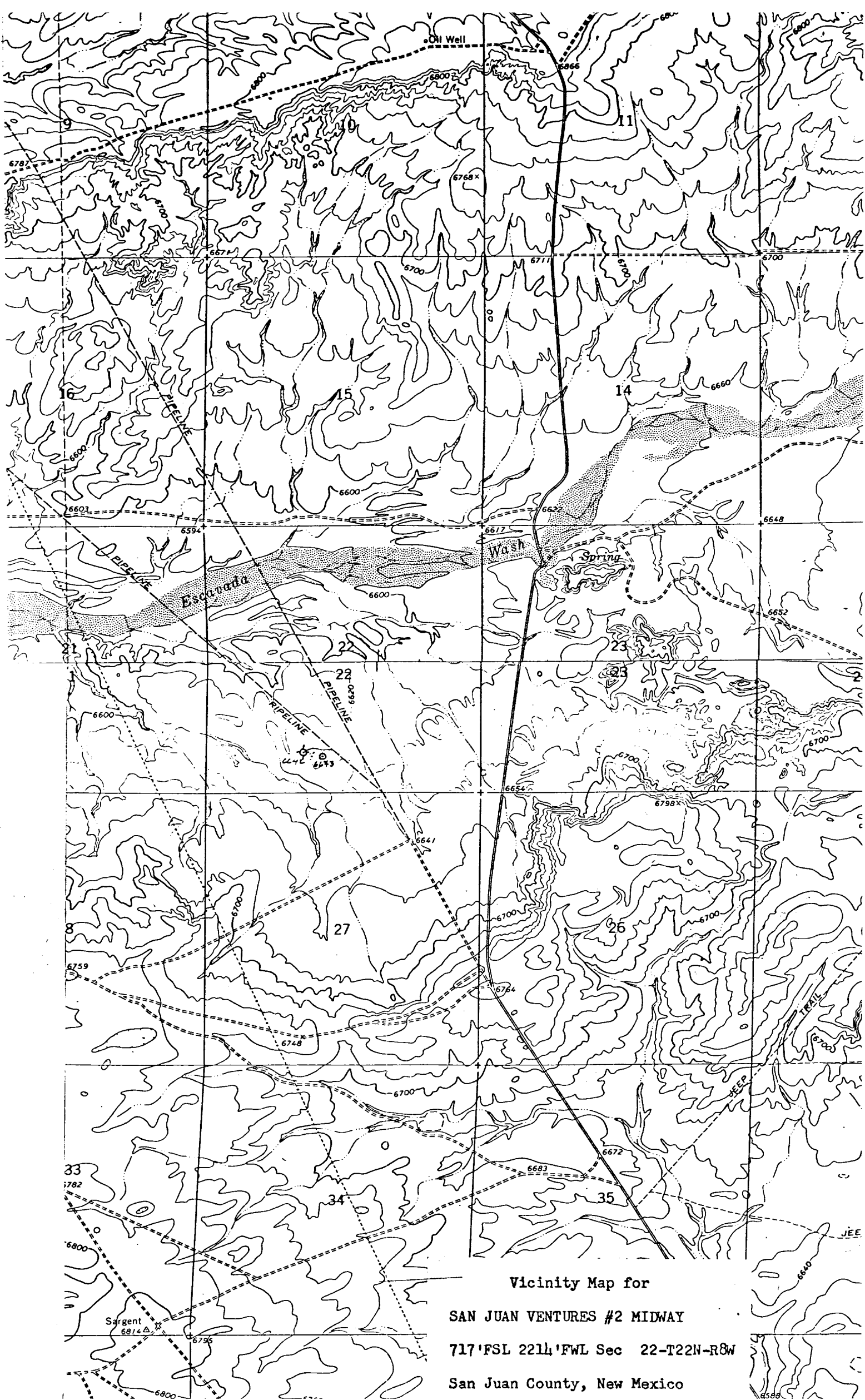
SAN JUAN VENTURE No. 2 MIDWAY  
717' FSL, 2214' FUL SECTION 22-T22N-R8W  
SAN JUAN COUNTY, N.M.

ALCOA  
ROAD



SCALE: 1" = 5'

Prepared by  
Warren E. Carr, Geologist  
P.O. Box 32436  
Oklahoma City, OK 73132



Vicinity Map for

SAN JUAN VENTURES #2 MIDWAY

717'FSL 221h'FWL Sec 22-T22N-R8W

San Juan County, New Mexico