

UNITED STATES  
DEPARTMENT OF THE INTERIOR  
GEOLOGICAL SURVEY

APPLICATION FOR PERMIT TO DRILL, DEEPEN, OR PLUG BACK

1a. TYPE OF WORK

DRILL ☒

DEEPEN ☐

PLUG BACK ☐

b. TYPE OF WELL

OIL  
WELL ☒

GAS  
WELL ☐

OTHER ☐

SINGLE  
ZONE ☒

MULTIPLE  
ZONE ☐

2. NAME OF OPERATOR

Kenai Oil & Gas Inc.

3. ADDRESS OF OPERATOR

2000 Energy Center One-717-17th St. Denver, Colo. 80202

4. LOCATION OF WELL (Report location clearly and in accordance with any State requirements.)\*

At surface

790' FNI / 1650' FWL  
At proposed prod. zone

14. DISTANCE IN MILES AND DIRECTION FROM NEAREST TOWN OR POST OFFICE\*

Bloomfield, N.M. 38 miles

15. DISTANCE FROM PROPOSED\*

LOCATION TO NEAREST  
PROPERTY OR LEASE LINE, FT.

(Also to nearest drlg. unit line, if any)

790'

18. DISTANCE FROM PROPOSED LOCATION\*

TO NEAREST WELL, DRILLING, COMPLETED,  
OR APPLIED FOR, ON THIS LEASE, FT.

16. NO. OF ACRES IN LEASE

320 161.48

19. PROPOSED DEPTH

6500

17. NO. OF ACRES ASSIGNED  
TO THIS WELL

220

20. ROTARY OR CABLE TOOLS

Rotary

21. ELEVATIONS (Show whether DF, RT, GR, etc.)

6975 G.L.

23.

PROPOSED CASING AND CEMENTING PROGRAM

SIZE OF HOLE	SIZE OF CASING	WEIGHT PER FOOT	SETTING DEPTH	QUANTITY OF CEMENT
12 1/4	8 5/8	23#	300' 550	250 sx- Circ to surface
7 7/8	4 1/2	10.5#	6500	250 sx- 50/50 Pozmix, 10% salt

Selectively test, perforate, and sandwater fracture the Dakota formation.

A 3000 psi WP and 6000 psi test double gate preventer equipped with blind and pipe rams will be used for blow out prevention.

The West 1/2 of Section 5 is dedicated to this well.

RECEIVED

JAN 8 1980

U. S. GEOLOGICAL SURVEY  
FARMINGTON, N. M.

RECEIVED  
FEB 14 1980

OIL CON. COM.  
DIST. 3

IN ABOVE SPACE DESCRIBE PROPOSED PROGRAM: If proposal is to deepen or plug back, give data on present productive zone and proposed new productive zone. If proposal is to drill or deepen directionally, give pertinent data on subsurface locations and measured and true vertical depths. Give blowout preventer program, if any.

24.

SIGNED

Joe F. Elledge

TITLE Agent

DATE 1-7-80

(This space for Federal or State office use)

PERMIT NO

APPROVAL DATE

APPROVED BY

TITLE

DATE

CONDITIONS OF APPROVAL, IF ANY:

ok Frank

James F. Sims  
DISTRICT ENGINEER

DEPT. OF COM. AUTHORIZED ARE  
SUBJECT TO COMPLIANCE WITH ATTACHED  
"GENERAL REQUIREMENTS"

\*See Instructions On Reverse Side

NMOCC

NEW MEXICO OIL CONSERVATION COMMISSION  
WELL LOCATION AND ACREAGE DEDICATION PLAT

Form C-102  
Supersedes C-128  
Effective 1-4-65

All distances must be from the outer boundaries of the Section.

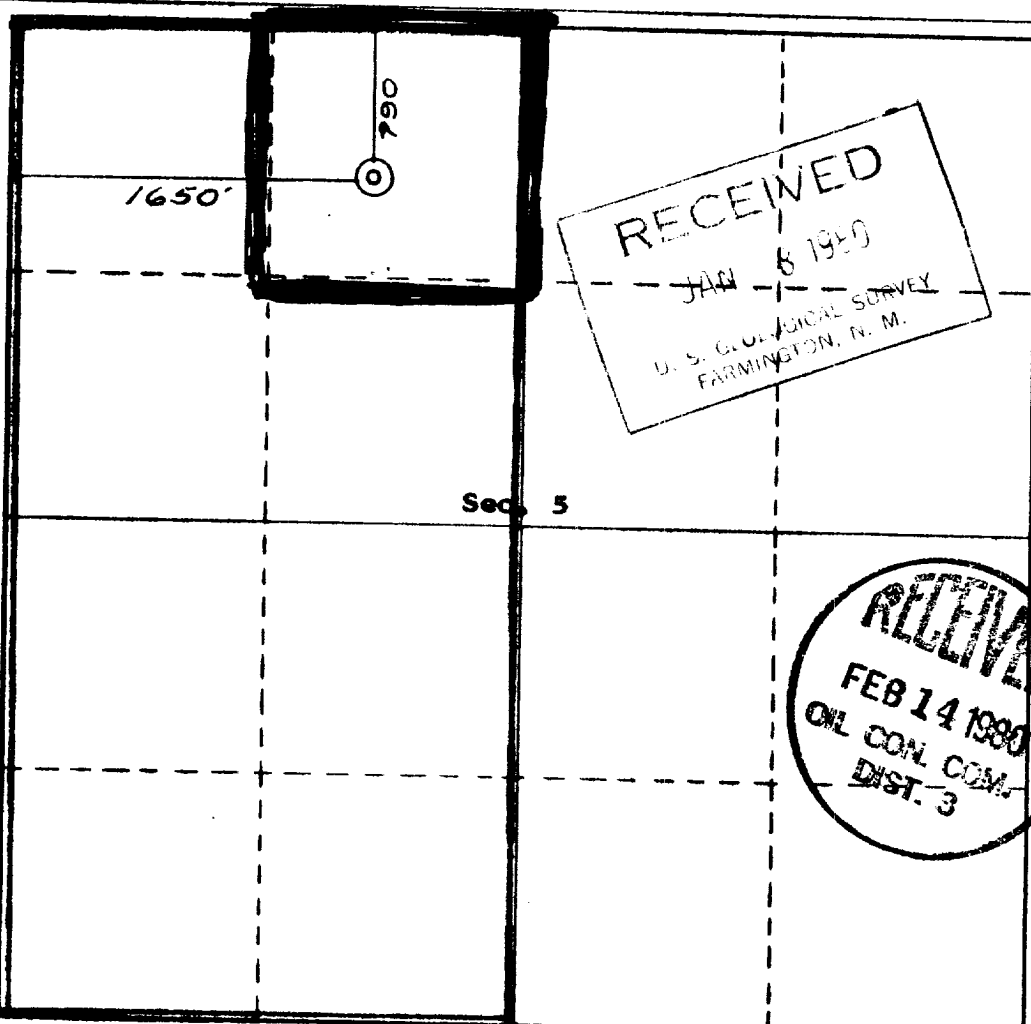
Operator <b>KENAI OIL &amp; GAS, INC.</b>			Lease <b>UNION NAVAJO ALLOTTED - 5</b>			Well No. <b>21</b>		
Unit Letter <b>C</b>	Section <b>5</b>	Township <b>23 NORTH</b>	Range <b>8 WEST</b>	County <b>SAN JUAN</b>				
Actual Footage Location of Well: <b>790</b> feet from the <b>NORTH</b> line and <b>1650</b> feet from the <b>WEST</b> line								
Ground Level Elev. <b>6975.0</b>	Producing Formation <b>Dakota Test</b>		Pool <b>WC DAKOTA</b>	Dedicated Acreage: <b>40.55</b> Acres				

1. Outline the acreage dedicated to the subject well by colored pencil or hatchure marks on the plat below.
2. If more than one lease is dedicated to the well, outline each and identify the ownership thereof (both as to working interest and royalty).
3. If more than one lease of different ownership is dedicated to the well, have the interests of all owners been consolidated by communitization, unitization, force-pooling, etc?

☐ Yes ☐ No If answer is "yes," type of consolidation \_\_\_\_\_

If answer is "no," list the owners and tract descriptions which have actually been consolidated. (Use reverse side of this form if necessary.) \_\_\_\_\_

No allowable will be assigned to the well until all interests have been consolidated (by communitization, unitization, forced-pooling, or otherwise) or until a non-standard unit, eliminating such interests, has been approved by the Commission.



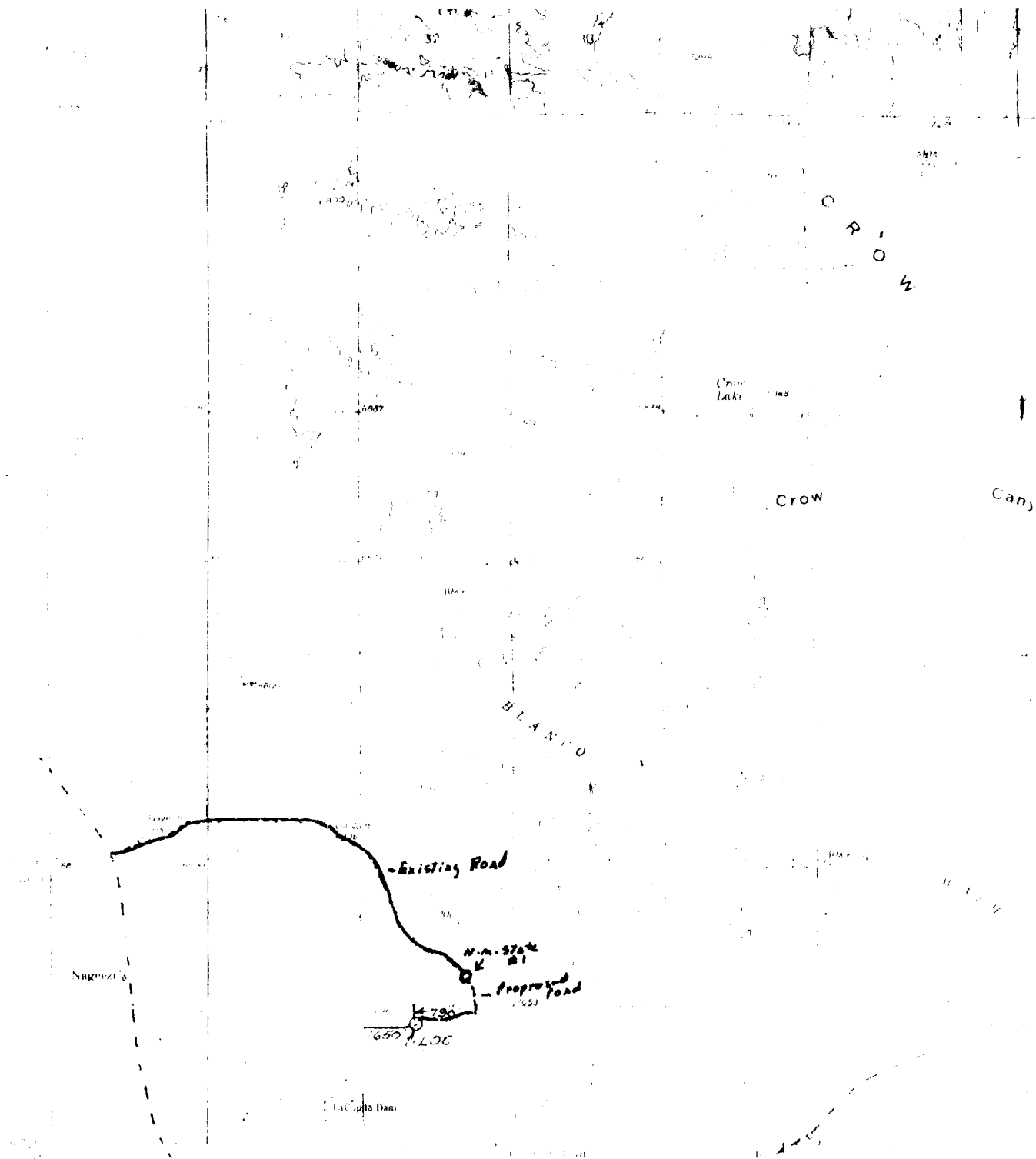
CERTIFICATION

I hereby certify that the information contained herein is true and complete to the best of my knowledge and belief.

Name \_\_\_\_\_  
Position \_\_\_\_\_  
Agent \_\_\_\_\_  
Company  
**Kenai Oil & Gas Inc.**  
Date  
**12-14-79**

I hereby certify that the well location shown on this plat was plotted from field notes of actual surveys made by me or under my supervision, and that the same is true and correct to the best of my knowledge and belief.

7 December 1979  
Date Surveyed  
Curtis C. Stocking  
Registered Professional Engineer  
and/or Land Surveyor  
5980  
Certificate No. C. STOCKING



Map prepared and published by the Geological Survey

of the United States

Geological Survey, Washington, D.C. 20508

Published by the U.S. Geological Survey, New Mexico District Office

Albuquerque, New Mexico

Scale: 1" = 1 Mile

For sale by the Superintendent of Documents

U.S. GOVERNMENT PRINTING OFFICE

FOR SALE BY THE SUPERINTENDENT OF DOCUMENTS

**VICINITY MAP**  
**KENAI OIL & GAS, INC.**  
 Well Location in NE/4 NW/4  
 Sec. 5, T23N, R8W, N.M.P.M.,  
 San Juan County, New Mexico  
 Scale: 1" = 1 Mile