

UNITED STATES  
DEPARTMENT OF THE INTERIOR  
GEOLOGICAL SURVEY

## APPLICATION FOR PERMIT TO DRILL, DEEPEN, OR PLUG BACK

1a. TYPE OF WORK  
DRILL ☒ DEEPEN ☐ PLUG BACK ☐

b. TYPE OF WELL  
Oil Well ☐ Gas Well ☒ OTHER ☐ SINGLE ZONE ☒ MULTIPLE ZONE ☐

2. NAME OF OPERATOR  
Kendi Oil & Gas, Inc.

3. ADDRESS OF OPERATOR  
2000 Energy Center One-717-17th St. Denver, Colo. 80202

4. LOCATION OF WELL (Report location clearly and in accordance with any State requirements.)  
At surface  
1750' FSL and 1650' FWI  
At proposed prod. zone  
Same

14. DISTANCE IN MILES AND DIRECTION FROM NEAREST TOWN OR POST OFFICE\*  
45 miles- Bloomfield, New Mexico

15. DISTANCE FROM PROPOSED\*  
LOCATION TO NEAREST  
PROPERTY OR LEASE LINE, FT.  
(Also to nearest drlg. unit line, if any) 1650'

16. NO. OF ACRES IN LEASE  
640

17. NO. OF ACRES ASSIGNED  
TO THIS WELL  
320

18. DISTANCE FROM PROPOSED LOCATION\*  
TO NEAREST WELL, DRILLING, COMPLETED  
OR APPLIED FOR, ON THIS LEASE, FT. EST. 1850'

19. PROPOSED DEPTH  
6500'

20. ROTARY OR CABLE TOOLS  
Rotary

21. ELEVATIONS (Show whether DF, RT, GR, etc.)  
6988 G.L.

22. APPROX. DATE WORK WILL START\*  
June 15, 1980

5. LEASE DESIGNATION AND SERIAL NO.  
N.M. 29560

6. IF INDIAN, ALLOTTEE OR TRIBE NAME

7. UNIT AGREEMENT NAME

8. FARM OR LEASE NAME  
Jeffers Federal-7

9. WELL NO.  
23

10. FIELD AND POOL, OR WILDCAT  
Wildcat Dakota

11. SEC., T., R., M., OR BLK.  
AND SURVEY OR AREA  
S-2, T23N, R8W

12. COUNTY OR PARISH  
San Juan

13. STATE  
N.M.

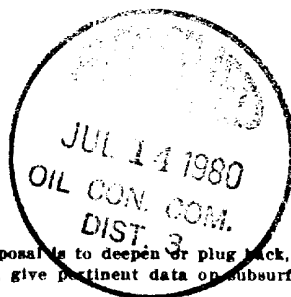
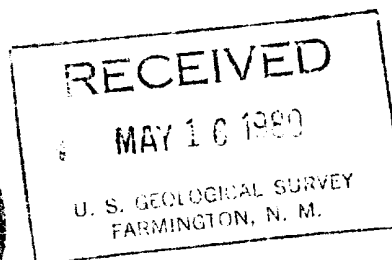
## PROPOSED CASING AND CEMENTING PROGRAM

SIZE OF HOLE	SIZE OF CASING	WEIGHT PER FOOT	SETTING DEPTH	QUANTITY OF CEMENT
12 1/4"	8 5/8"	24#	550'	300 sx-(Circulate)
7 7/8"	4 1/2"	10.5#	6500'	325 sx

Selectively test, perforate, and sandwater fracture the Dakota formation. A 3000 psi WP and 6000 psi test double gate preventer equipped with blind and pipe rams will be used for blow out prevention.

The West  $\frac{1}{2}$  of Section 2 is dedicated to this well.

The gas is not dedicated.



IN ABOVE SPACE DESCRIBE PROPOSED PROGRAM: If proposal is to deepen or plug back, give data on present productive zone and proposed new productive zone. If proposal is to drill or deepen directionally, give pertinent data on subsurface locations and measured and true vertical depths. Give blow-out preventer program, if any.

24.

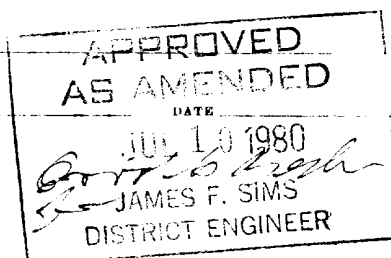
SIGNED James F. Sims TITLE Agent DATE May 14, 1980  
(This space for Federal or State office use)

PERMIT NO.

DRILLING OPERATIONS AUTHORIZED ARE  
SUBJECT TO COMPLETION OF ALL ATTACHED  
'GENERAL REQUIREMENTS'

APPROVED BY

CONDITIONS OF APPROVAL, IF ANY:

ok Sims

\*See Instructions On Reverse Side

## OIL CONSERVATION DIVISION

STATE OF NEW MEXICO  
ENERGY AND MINERALS DEPARTMENTP. O. BOX 2088  
SANTA FE, NEW MEXICO 87501Form C-102  
Revised 10-1-78

All distances must be from the outer boundaries of the Section

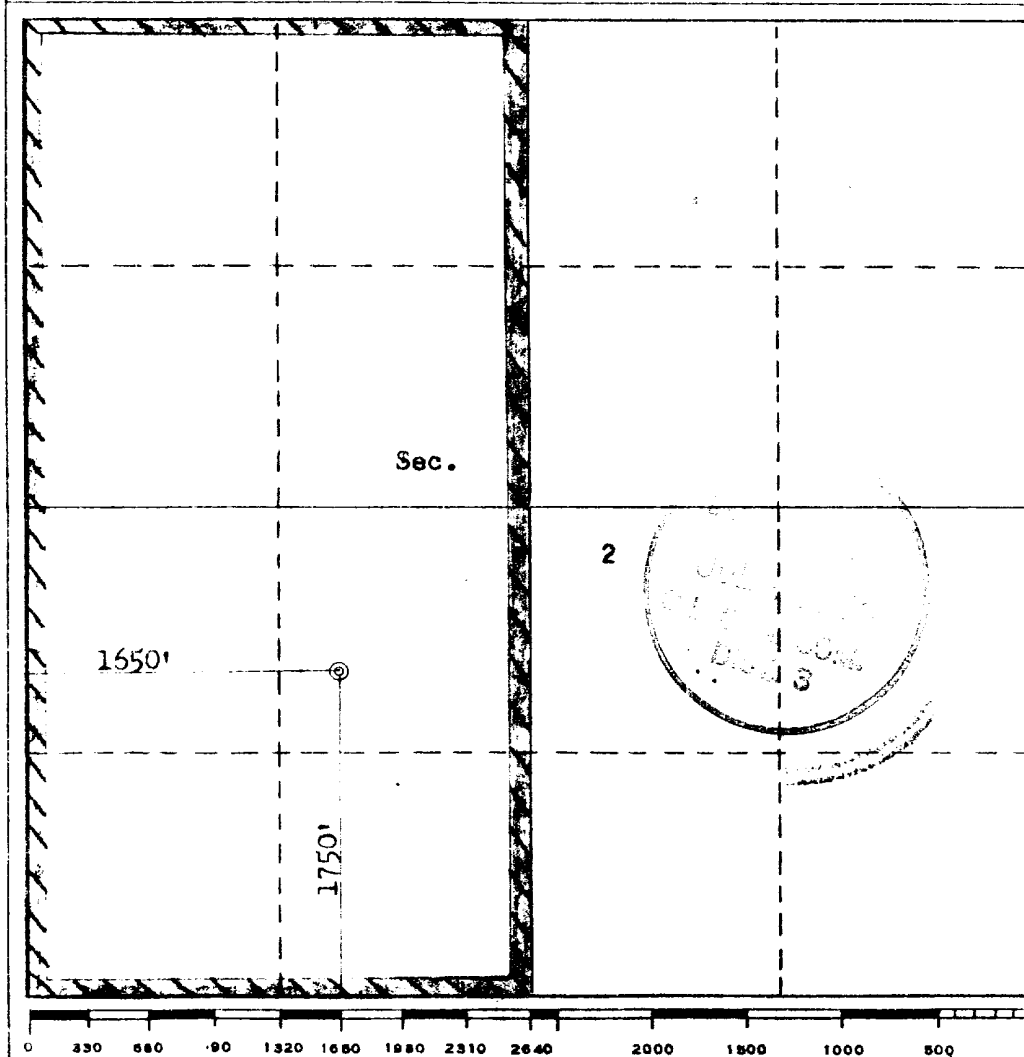
Operator <b>KENAI OIL &amp; GAS, INCORPORATED</b>			Lease <b>JEFFERS-FEDERAL 2</b>		Well No. <b>23</b>
Unit Letter <b>K</b>	Section <b>2</b>	Township <b>23N</b>	Range <b>8W</b>	County <b>San Juan</b>	
Actual Footage Location of Well: <b>1750</b> feet from the <b>South</b> line and <b>1650</b> feet from the <b>West</b> line					
Ground Level Elev. <b>6988</b>	Producing Formation <b>Dakota</b>		Pool <b>Wildcat</b>	Dedicated Acreage: <b>320</b> Acres	

1. Outline the acreage dedicated to the subject well by colored pencil or hachure marks on the plat below.
2. If more than one lease is dedicated to the well, outline each and identify the ownership thereof (both as to working interest and royalty).
3. If more than one lease of different ownership is dedicated to the well, have the interests of all owners been consolidated by communitization, unitization, force-pooling, etc?

☐ Yes ☐ No If answer is "yes," type of consolidation \_\_\_\_\_

If answer is "no," list the owners and tract descriptions which have actually been consolidated. (Use reverse side of this form if necessary.) \_\_\_\_\_

No allowable will be assigned to the well until all interests have been consolidated (by communitization, unitization, forced-pooling, or otherwise) or until a non-standard unit, eliminating such interests, has been approved by the Commission.



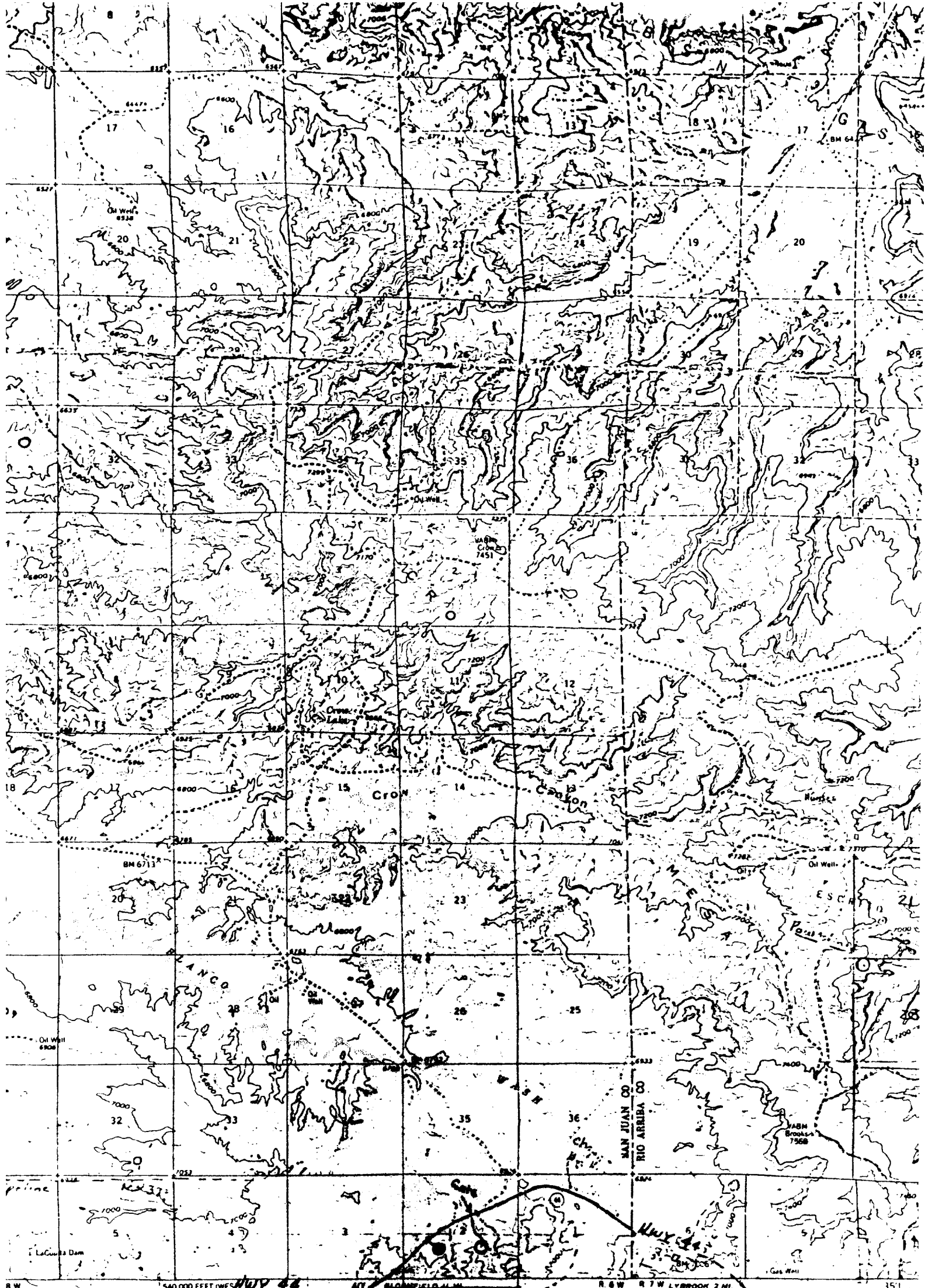
## CERTIFICATION

I hereby certify that the information contained herein is true and complete to the best of my knowledge and belief.

Name J. F. Elledge  
 Position Agent  
 Company Elledge Consulting & Production  
 Date 5-14-80

I hereby certify that the well location shown on this plat was plotted from field notes of actual surveys made by me or under my supervision, and that the same is true and correct to the best of my knowledge and belief.

Date Surveyed April 29, 1980  
 Registered Professional Engineer and/or Land Surveyor  
Fred B. Kerr Jr.  
 Certificate No. 3950



Geological Survey

from aerial  
1959

an datum  
ordinate system.

ir grid ticks.

ocations  
ufficient data

AP  
OI

SCALE 1:62 500

CONTOUR INTERVAL 40 FEET

Vicinity Map for  
KENAI OIL & GAS, INC. #23 JEFFERS-FEDERAL 2  
1750' FSL 1650' FWL Sec. 2-T23N-R8W  
SAN JUAN COUNTY, NEW MEXICO

WAS HINGTON 25, D.C.

ON REQUEST