

UNITED STATES
DEPARTMENT OF THE INTERIOR
GEOLOGICAL SURVEY

APPLICATION FOR PERMIT TO DRILL, DEEPEN, OR PLUG BACK

1a. TYPE OF WORK
DRILL ☒ DEEPEN ☐ PLUG BACK ☐

b. TYPE OF WELL
OIL WELL ☒ GAS WELL ☐ OTHER ☐
SINGLE ZONE ☒ MULTIPLE ZONE ☐

2. NAME OF OPERATOR
DUGAN PRODUCTION CORP.

3. ADDRESS OF OPERATOR
P O Box 208, Farmington, NM 87499

4. LOCATION OF WELL (Report location clearly and in accordance with any State requirements.)
At surface
1980' FSL - 660' FEL
At proposed prod. zone

14. DISTANCE IN MILES AND DIRECTION FROM NEAREST TOWN OR POST OFFICE*
7 miles southwest of Nageezi Trading Post

15. DISTANCE FROM PROPOSED*
LOCATION TO NEAREST
PROPERTY OR LEASE LINE, FT.
(Also to nearest drlg. unit line, if any)
660'
18. DISTANCE FROM PROPOSED LOCATION*
TO NEAREST WELL, DRILLING, COMPLETED,
OR APPLIED FOR, ON THIS LEASE, FT.
approx. 1900'
N.E.

16. NO. OF ACRES IN LEASE
1880.00
19. PROPOSED DEPTH
4910'

17. NO. OF ACRES ASSIGNED
TO THIS WELL
40
20. ROTARY OR CABLE TOOLS
Rotary

21. ELEVATIONS (Show whether on bench mark or on spot)
6748' GL

22. APPROX. DATE WORK WILL START*
ASAP

23. PROPOSED CASING AND CEMENTING PROGRAM

SIZE OF HOLE	SIZE OF CASING	WEIGHT PER FOOT	SETTING DEPTH	
12-1/4"	8-5/8"	24#	200'	150 cf circ. to surface
7-7/8"	4-1/2"	10.5#	4910'	1180 cf circ. to surface

Plan to drill a 12 1/4" hole and set 200' of 8-5/8" OD, 24#, K-55 surface casing; then plan to drill 7-7/8" hole to total depth with gel-water-mud program to test Gallup formation. Plan to run IES and CDL logs. If deemed productive, will run 4 1/2", 10.5#, J-55 casing, selectively perforate, frac, clean out after frac and complete well.

RECEIVED
AUG 30 1985
ON 10/1/85

IN ABOVE SPACE DESCRIBE PROPOSED PROGRAM: If proposal is to deepen or plug back, give data on present productive zone and proposed new productive zone. If proposal is to drill or deepen directionally, give pertinent data on subsurface locations and measured and true vertical depths. Give blowout preventer program, if any.

24. SIGNED Sherman E. Dugan TITLE Geologist DATE 7-15-85
Sherman E. Dugan
(This space for Federal or State office use)

PERMIT NO. _____ APPROVAL DATE _____
APPROVED BY _____ TITLE _____
CONDITIONS OF APPROVAL, IF ANY: _____

APPROVED
AS AMENDED

AUG 28 1985

18/L Stan McKee
M. MILLENBACH
AREA MANAGER

*See Instructions On Reverse Side
NMDC

24
28

OIL CONSERVATION DIVISION

P. O. BOX 2088

Form C-102
Revised 10-1-78STATE OF NEW MEXICO
ENERGY AND MINERALS DEPARTMENT

SANTA FE, NEW MEXICO 87501

All distances must be from the outer boundaries of the Section.

Operator Dugan Production Corporation		Lease Olson		Well No. 1
Unit Letter I	Section 11	Township 23 North	Range 10 West	County San Juan
Actual Footage Location of Wells: 1980 feet from the South line and 660 feet from the East line				
Ground Level Elev. 6748	Producing Formation Gallup	Pool Undesignated Gallup	Dedicated Acreage: 40 Acres	

1. Outline the acreage dedicated to the subject well by colored pencil or hatchure marks on the plat below.
2. If more than one lease is dedicated to the well, outline each and identify the ownership thereof (both as to working interest and royalty).
3. If more than one lease of different ownership is dedicated to the well, have the interests of all owners been consolidated by communitization, unitization, force-pooling, etc?

☐ Yes ☐ No If answer is "yes," type of consolidation _____

If answer is "no," list the owners and tract descriptions which have actually been consolidated. (Use reverse side of this form if necessary.) _____

No allowable will be assigned to the well until all interests have been consolidated (by communitization, unitization, forced-pooling, or otherwise) or until a non-standard unit, eliminating such interests, has been approved by the Division.

<div>RECEIVED JUL 16 1985 BUREAU OF LAND MANAGEMENT SANTAFITO RESOURCE AREA</div>		<div>Dugan Prod. Fed. Ls# NM 42740 660'</div>
SEC. 11		
<div>RELEASED AUG 30 1985 OIL CON. DIV. DIST. 1</div>		1980'

CERTIFICATION

I hereby certify that the information contained herein is true and complete to the best of my knowledge and belief.

Sherman E. Dugan

Name

Sherman E. Dugan

Position

Geologist

Company

Dugan Production Corp.

Date

July 15, 1985

Edgar L. Risenhoover
I hereby certify that the location shown on this plat was plotted from field notes of actual survey made by me or under my supervision, and that the same is true and correct to the best of my knowledge and belief.

Date Surveyed

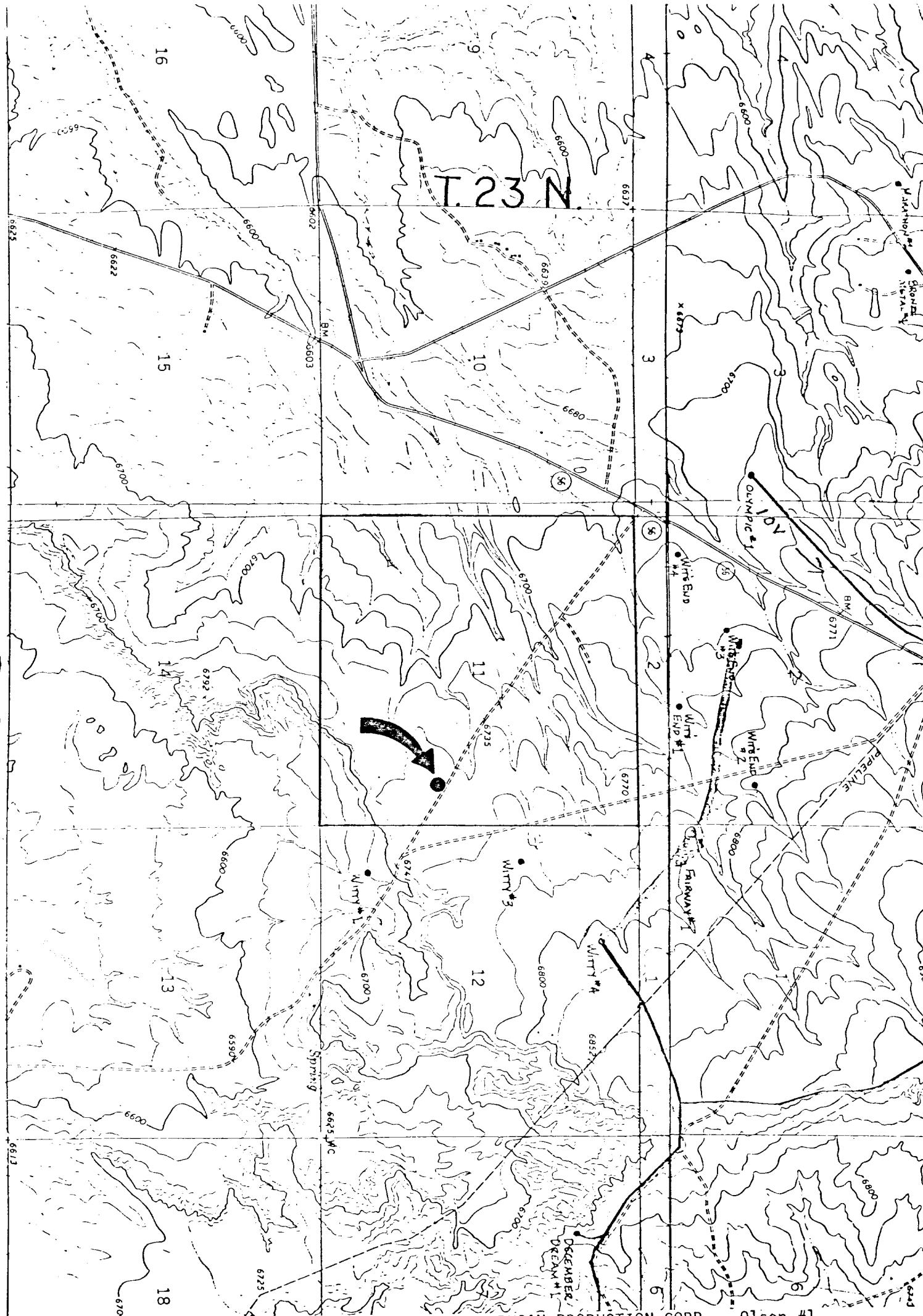
June 28, 1985

Registered Professional Engineer
and/or Land Surveyor*Edgar L. Risenhoover*

Certificate No. 5979

Edgar L. Risenhoover, L.S.

R. 10 W.



DUGAN PRODUCTION CORP. - Olson #1
Existing Roads

Exhibit E

Distance from nearest town or reference pt.
7 miles southwest Nageezi Trading Post

Type of surface dirt

Conditions good

Other

DUGAN PRODUCTION CORP. - Olson #1
Planned Access Road(s)

Exhibit E

Width Maximum grades

Drainage design

Cuts & Fills

Surfacing material

Turnouts

Culverts

Gates

Cattleguards

Fence cuts

NO ACCESS ROAD
REQUIRED