

UNITED STATES
DEPARTMENT OF THE INTERIOR
GEOLOGICAL SURVEY

APPLICATION FOR PERMIT TO DRILL, DEEPEN, OR PLUG BACK

1a. TYPE OF WORK
DRILL ☒ DEEPEN ☐ PLUG BACK ☐

b. TYPE OF WELL

OIL
WELL ☒GAS
WELL ☐

OTHER

SINGLE
ZONE ☒MULTIPLE
ZONE ☐

2. NAME OF OPERATOR

DUGAN PRODUCTION CORP.

3. ADDRESS OF OPERATOR

P O Box 208, Farmington, NM 87499

4. LOCATION OF WELL (Report location clearly and in accordance with any State requirements.)*

At surface

590' FNL - 860' FEL

At proposed prod. zone

14. DISTANCE IN MILES AND DIRECTION FROM NEAREST TOWN OR POST OFFICE*

8 miles SW of Blanco Trading Post

BUREAU OF LAND MANAGEMENT
FARMINGTON RESOURCE AREA

15. DISTANCE FROM PROPOSED*

LOCATION TO NEAREST

PROPERTY OR LEASE LINE, FT.

(Also to nearest drlg. unit line, if any)

590'

18. DISTANCE FROM PROPOSED LOCATION* approx. 2400'

TO NEAREST WELL, DRILLING, COMPLETED,

OR APPLIED FOR, ON THIS LEASE, FT.

16. NO. OF ACRES IN LEASE

1080

19. PROPOSED DEPTH

5025'

17. NO. OF ACRES ASSIGNED
TO THIS WELL

40

20. ROTARY OR CABLE TOOLS

Rotary

21. ELEVATIONS (Show whether DE, RT, GR, etc.)

6842' Gloria area review pursuant to 43 CFR 3145.3

22. APPROX. DATE WORK WILL START*

ASAP

23.

one appeal pursuant to 43 CFR 3145.3

PROPOSED CASING AND CEMENTING PROGRAM

DRILLING OPERATIONS AUTHORIZED ARE
SUBJECT TO COMPLIANCE WITH ATTACHED

SIZE OF HOLE	SIZE OF CASING	WEIGHT PER FOOT	SETTING DEPTH	GENERAL REQUIREMENTS*
12-1/4"	8-5/8"	24#	200'	150 cf circ. to surface
7-7/8"	4-1/2"	10.5#	5025'	1215 cf circ. to surface

Plan to drill a 12 1/4" hole and run 200' of 8-5/8" OD, 24#, K-55 surface casing; then plan to drill a 7-7/8" hole to total depth with gel-water-mud program to test Gallup formation. Plan to run IES and CDL logs. If deemed productive, will run 4 1/2", 10.5#, J-55 casing, selectively perforate, frac, clean out after frac and complete well.

RECEIVED

SEP 30 1985

OIL CON. DIV.

DIST. 3

IN ABOVE SPACE DESCRIBE PROPOSED PROGRAM: If proposal is to deepen or plug back, give data on present productive zone and proposed new productive zone. If proposal is to drill or deepen directionally, give pertinent data on subsurface locations and measured and true vertical depths. Give blowout preventer program, if any.

24.

SIGNED

Sherman E. Dugan

TITLE

Geologist

DATE

7-15-85

(This space for Federal or State office use)

PERMIT NO.

APPROVAL DATE

APPROVED BY

TITLE

DATE

CONDITIONS OF APPROVAL, IF ANY:

APPROVED
AS AMENDED

SEP 26 1985

/s/ J. Stan McKee

M. MILLENSBACH
AREA MANAGER

*See Instructions On Reverse Side

OIL CONSERVATION DIVISION

STATE OF NEW MEXICO
ENERGY AND MINERALS DEPARTMENTP. O. BOX 2088
SANTA FE, NEW MEXICO 87501Form C-102
Revised 10-1-78

All distances must be from the outer boundaries of the Section.

Operator Dugan Production Corporation			Lease Witty		Well No. 5
Unit Letter A	Section 12	Township 23 North	Range 10 West	County San Juan	
Actual Footage Location of Well: 590 feet from the North line and 860 feet from the East line					
Ground Level Elev. 6842	Producing Formation Gallup		Pool Undesignated Gallup		Dedicated Acreage: 40 Acres

1. Outline the acreage dedicated to the subject well by colored pencil or hatchure marks on the plat below.
2. If more than one lease is dedicated to the well, outline each and identify the ownership thereof (both as to working interest and royalty).
3. If more than one lease of different ownership is dedicated to the well, have the interests of all owners been consolidated by communitization, unitization, force-pooling, etc?

☐ Yes ☐ No If answer is "yes," type of consolidation _____

If answer is "no," list the owners and tract descriptions which have actually been consolidated. (Use reverse side of this form if necessary.) _____

No allowable will be assigned to the well until all interests have been consolidated (by communitization, unitization, forced-pooling, or otherwise) or until a non-standard unit, eliminating such interests, has been approved by the Division.

590'		860'	
		Dugan Prod. Ls. # NM 16762	
SEC. 12		OIL CON. DIV. DIST. 3	
RECEIVED JUL 16 1985 BUREAU OF LAND MANAGEMENT FARMINGTON RESOURCE AREA			

CERTIFICATION

I hereby certify that the information contained herein is true and complete to the best of my knowledge and belief.

Sherman E. Dugan
Name

Sherman E. Dugan

Position
Geologist

Company
Dugan Production Corp.

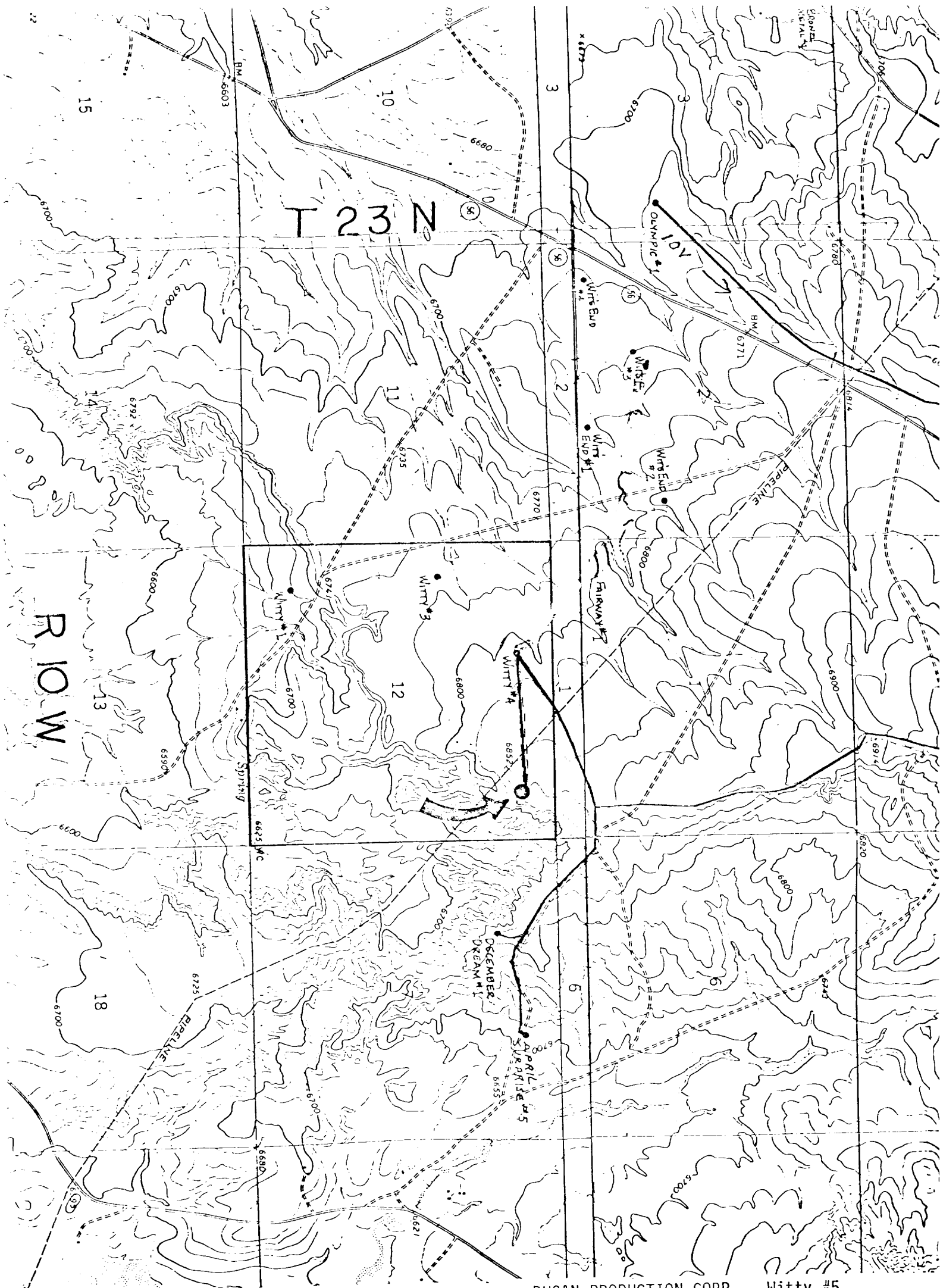
Date
7-15-85

5279
I certify that the well location shown on this plat was plotted from field notes of actual surveys made by me or under my supervision, and that the same is true and correct to the best of my knowledge and belief.

Date Surveyed
June 28, 1985

Registered Professional Engineer
on/for Land Surveyor

Edgar L. Risenhoover
Certificate No. 5979
Edgar L. Risenhoover, L.S.



DUGAN PRODUCTION CORP. - Witty #5
 Existing Roads Exhibit E

Distance from nearest town or reference pt.
 8 miles southwest of Blanco Trading Post

Type of surface dirt
 Conditions good
 Other

DUGAN PRODUCTION CORP. - Witty #5
 Planned Access Road(s) Exhibit E

Width	<u>20'</u>	Maximum grades	<u>2%</u>
Drainage design	<u> </u>	None required	<u> </u>
Cuts & Fills	<u> </u>	None	<u> </u>
Surfacing material	<u> </u>		
↳ Turnouts	<u> </u>		
↳ Culverts	<u> </u>		
↳ Gates	<u> </u>		
↳ Cattleguards	<u> </u>		
↳ Fence cuts	<u> </u>		

None