

6 BLM 1 Celsius-Denver, 1-SLC
UNITED STATES
DEPARTMENT OF THE INTERIOR
GEOLOGICAL SURVEY

SUBMIT IN TRIPLICATE File Form approved. 1 BIA
Budget Bureau No. 42-R1425.
(Other instructions on reverse side) 30-145-26628 (Jerry Degroat)

APPLICATION FOR PERMIT TO DRILL, DEEPEN, OR PLUG BACK

1a. TYPE OF WORK

DRILL ☒

DEEPEN ☐

PLUG BACK ☐

b. TYPE OF WELL

OIL WELL ☒

GAS WELL ☐

OTHER

SINGLE ZONE ☒

MULTIPLE ZONE ☐

2. NAME OF OPERATOR

DUGAN PRODUCTION CORP.

3. ADDRESS OF OPERATOR

P O Box 208, Farmington, NM 87499

4. LOCATION OF WELL (Report location clearly and in accordance with any State requirements.)

At surface

2310' FSL - 330' FEL

At proposed prod. zone

14. DISTANCE IN MILES AND DIRECTION FROM NEAREST TOWN OR POST OFFICE

7 miles SW from Blanco Trading Post

15. DISTANCE FROM PROPOSED* LOCATION TO NEAREST PROPERTY OR LEASE LINE, FT. (Also to nearest drig. unit line, if any)

330'

16. NO. OF ACRES IN LEASE

160

17. NO. OF ACRES ASSIGNED TO THIS WELL

40

18. DISTANCE FROM PROPOSED LOCATION* TO NEAREST WELL, DRILLING, COMPLETED, OR APPLIED FOR, ON THIS LEASE, FT.

2400' S of DPC's Marathon #1

19. PROPOSED DEPTH

4740'

20. ROTARY OR CABLE TOOLS

Rotary

21. ELEVATIONS (Show whether DF, RT, GR, etc.)

6605' GL; 6617' RKB

DRILLING OPERATIONS AUTHORIZED ARE SUBJECT TO COMPLIANCE WITH ATTACHED "GENERAL REQUIREMENTS"

23. PROPOSED CASING AND CEMENTING PROGRAM

This action is subject to technical and procedural review pursuant to 43 CFR 3165.3 and appeal pursuant to 43 CFR 3165.4.

SIZE OF HOLE	SIZE OF CASING	WEIGHT PER FOOT	SETTING DEPTH	
12-1/4"	8-5/8"	24#	200'	159 cf circulated to surface
7-7/8"	4-1/2"	10.5#	4740'	1415 cf circulated to surface

Plan to drill a 12-1/4" hole and set 200' of 8-5/8" OD, 24#, J-55 surface casing; then plan to drill a 7-7/8" hole to total depth with gel-water-mud program to test Gallup formation. Plan to run IES and CDL logs. If determined productive, will run 4-1/2", 10.5#, J-55 casing, selectively perforate, frac, clean out after frac and complete well.

Gas is Dedicated.

RECEIVED
DEC 27 1985
OIL CON. DIV.
DIST.

IN ABOVE SPACE DESCRIBE PROPOSED PROGRAM: If proposal is to deepen or plug back, give data on present productive zone and proposed new productive zone. If proposal is to drill or deepen directionally, give pertinent data on subsurface locations and measured and true vertical depths. Give blowout preventer program, if any.

24.

SIGNED

Barbara Williams

TITLE

Petroleum Engineer

DATE

10-30-85

(This space for Federal or State office use)

PERMIT NO.

APPROVAL DATE

APPROVED BY

TITLE

CONDITIONS OF APPROVAL, IF ANY:

APPROVED
AS AMENDED

DEC 24 1985

/s/ J. Stan McKee

M. MILLENBACH
AREA MANAGER

*See Instructions On Reverse Side

NMOCC

Hold C-104 for
80 Acre Plot

OIL CONSERVATION DIVISION

STATE OF NEW MEXICO
ENERGY AND MINERALS DEPARTMENTP. O. BOX 2088
SANTA FE, NEW MEXICO 87501Form C-102
Revised 10-1

All distances must be from the outer boundaries of the Section.

Operator Dugan Production Corporation			Lease Lake Placid		Well No. 1
Unit Letter 1	Section 4	Township 23 North	Range 10 West	County San Juan	
Actual Footage Location of Well:					
2310 feet from the South line and		330 feet from the East line			
Ground Level Elev. 6605	Producing Formation Gallup	Pool <i>South Kisti</i> Undesignated Gallup	Dedicated Acreage: 40		

1. Outline the acreage dedicated to the subject well by colored pencil or hatchure marks on the plat below.
2. If more than one lease is dedicated to the well, outline each and identify the ownership thereof (both as to work interest and royalty).
3. If more than one lease of different ownership is dedicated to the well, have the interests of all owners been consolidated by communitization, unitization, force-pooling, etc?

☐ Yes ☐ No If answer is "yes," type of consolidation _____

If answer is "no," list the owners and tract descriptions which have actually been consolidated. (Use reverse side this form if necessary.) _____

No allowable will be assigned to the well until all interests have been consolidated (by communitization, unitization, forced-pooling, or otherwise) or until a non-standard unit, eliminating such interests, has been approved by the Division.

<div style="text-align: center;"> RECEIVED NOV 05 1985 BUREAU OF LAND MANAGEMENT FARMINGTON RESOURCE AREA </div>		<div style="text-align: center;"> RECEIVED NOV 07 1985 OFF. </div>
<div style="text-align: center;"> RECEIVED NOV 07 1985 OFF. </div>		Dugan Prod. N00-C-1420- 7311

CERTIFICATION

I hereby certify that the information contained herein is true and complete to the best of my knowledge and belief.

Sherman E. Dugan

Name

Sherman E. Dugan

Position

Geologist

Company

Dugan Production Corp.

Date

October 30, 1985

EDGAR L. RISENHOOVER, State Engineer, New Mexico, Seal No. 5979. I certify that the local shown on this plat was plotted from notes of actual surveys made by me under my supervision, and that the same is true and correct to the best of my knowledge and belief.

Date Surveyed

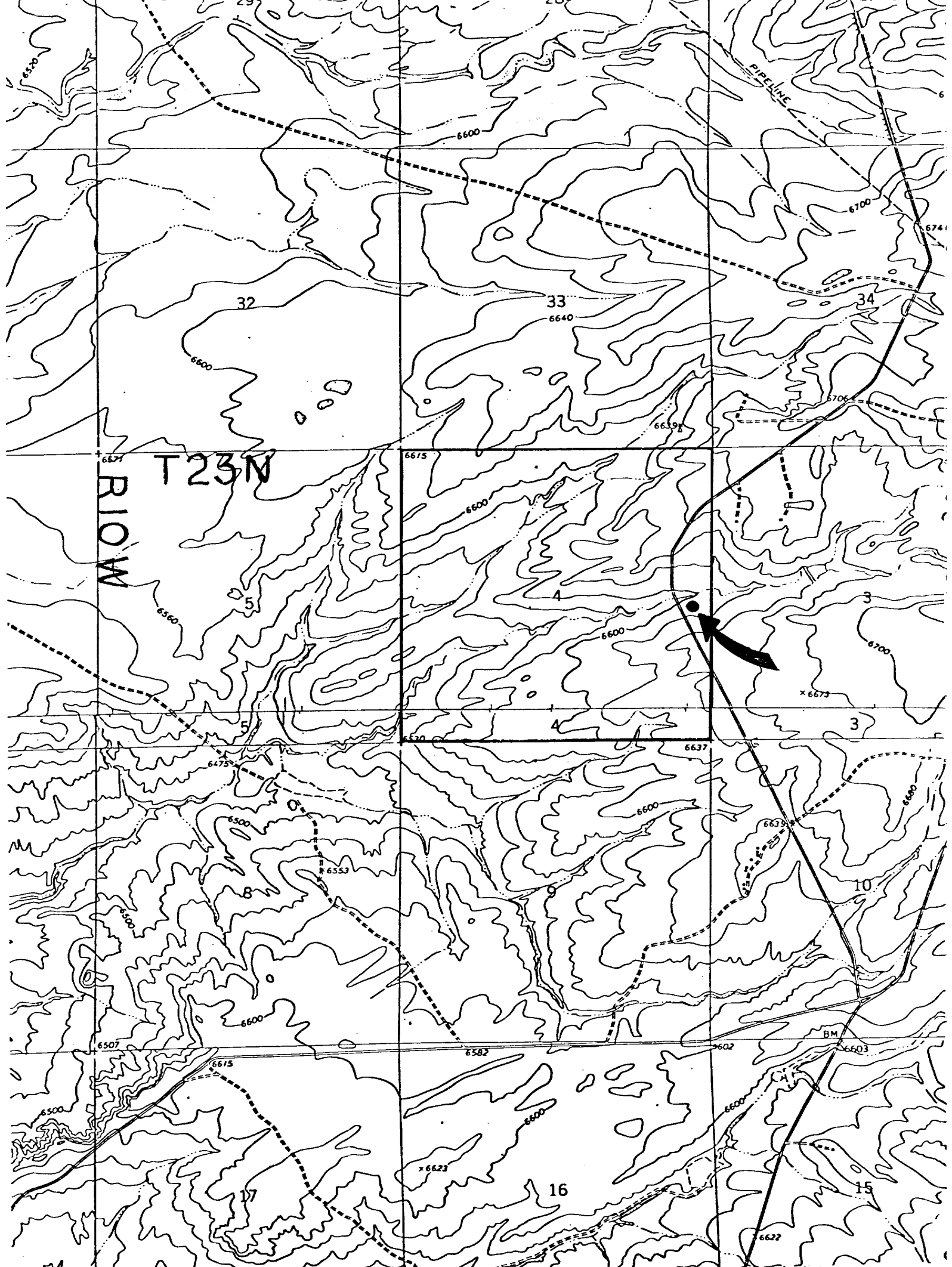
October 1, 1985

Registered Professional Engineer and/or Land Surveyor

Edgar L. Risenhoover

Certificate No. 5979

Edgar L. Risenhoover, L.S.



DUGAN PRODUCTION CORP. - Lake Placid #1
Existing Roads Exhibit E

Distance from nearest town or reference pt.
7 miles SW of Blanco Trading Post

Type of surface dirt

Conditions good

Other _____

DUGAN PRODUCTION CORP. - Lake Placid #1
Planned Access Road(s) Exhibit E

Width _____ Maximum grades _____

Drainage design _____

Cuts & Fills _____

Surfacing material _____

Turnouts

Culverts

Gates

Cattleguards

Fence cuts

NO ACCESS ROAD
REQUIRED