

UNITED STATES
DEPARTMENT OF THE INTERIOR
GEOLOGICAL SURVEY

APPLICATION FOR PERMIT TO DRILL, DEEPEN, OR PLUG BACK

1a. TYPE OF WORK

DRILL ☒DEEPEN ☐PLUG BACK ☐

b. TYPE OF WELL

OIL
WELL ☒GAS
WELL ☐

OTHER

SINGLE
ZONE ☒MULTIPLE
ZONE ☐

2. NAME OF OPERATOR

DUGAN PRODUCTION CORP.

3. ADDRESS OF OPERATOR

P.O. Box 208, Farmington, NM 87499

4. LOCATION OF WELL (Report location clearly and in accordance with any State requirements.)*

At surface

810' FSL & 810' FWL
At proposed prod. zone

14. DISTANCE IN MILES AND DIRECTION FROM NEAREST TOWN OR POST OFFICE*

approx. 8 miles SW of Blanco Trading Post, NM

15. DISTANCE FROM PROPOSED*

LOCATION TO NEAREST
PROPERTY OR LEASE LINE, FT.
(Also to nearest drlg. unit line, if any)

810'

16. NO. OF ACRES IN LEASE

320 639.56

18. DISTANCE FROM PROPOSED LOCATION*

TO NEAREST WELL, DRILLING, COMPLETED,
OR APPLIED FOR, ON THIS LEASE, FT.

1867' from

Olympic #3

19. PROPOSED DEPTH

4790'

17. NO. OF ACRES ASSIGNED
TO THIS WELL

W 80

20. ROTARY OR CABLE TOOLS

Rotary

21. ELEVATIONS (Show whether DF, RT, GR, etc.)

6665' GL.; 6677' RKB

This action is subject to technical and
procedural review pursuant to 43 CFR 3105.3
and special provisions to 43 CFR 2105.4

22. APPROX. DATE WORK WILL START*

ASAP

23. PROPOSED CABLE TOOL TESTING PROGRAM

DRILLING OPERATIONS AUTHORIZED ARE
SUBJECT TO COMPLIANCE WITH ATTACHED
"GENERAL REQUIREMENTS"

SIZE OF HOLE	SIZE OF CASING	WEIGHT PER FOOT	SETTING DEPTH	
12-1/4"	8-5/8"	24#	200'	159 cf circ. to surface
7-7/8"	4-1/2"	10.5#	4790'	1520 cf circ. to surface

Plan to drill a 12-1/4" hole and set 200' of 8-5/8" OD, 24#, J-55 surface casing; then plan to drill a 7-7/8" hole to total depth with gel-water-mud program to test Gallup formation. Plan to run IES and CDL logs. If determined productive, will run 4-1/2", 10.5#, J-55 casing, selectively perforate, frac, clean out after frac and complete well.

IN ABOVE SPACE DESCRIBE PROPOSED PROGRAM: If proposal is to deepen or plug back, give data on present productive zone and proposed new productive zone. If proposal is to drill or deepen directionally, give pertinent data on subsurface locations and measured and true vertical depths. Give blowout preventer program, if any.

24.

SIGNED

Sherman E. Dugan

TITLE

Geologist

DATE

9-29-87

(This space for Federal or State office use)

PERMIT NO.

APPROVAL DATE

APPROVED BY

TITLE

DATE

CONDITIONS OF APPROVAL, IF ANY:

NMCCC

*See Instructions On Reverse Side

Robert Moore for

OIL CONSERVATION DIVISION

STATE OF NEW MEXICO
ENERGY AND MINERALS DEPARTMENTP. O. BOX 2088
SANTA FE, NEW MEXICO 87501Form C-102
Revised 10-1-78

All distances must be from the outer boundaries of the Section.


Operator Dugan Production Corporation		Lease Olympic		Well No. 4	
Unit Letter M	Section 3	Township 23 North	Range 10 West	County San Juan	
Actual Footage Location of Well: 810 feet from the South line and 810 feet from the West line					
Ground Level Elev. 6665	Producing Formation Gallup		Pool South Bisti Gallup		Dedicated Acreage: 80 Acres

1. Outline the acreage dedicated to the subject well by colored pencil or hachure marks on the plat below.
2. If more than one lease is dedicated to the well, outline each and identify the ownership thereof (both as to working interest and royalty).
3. If more than one lease of different ownership is dedicated to the well, have the interests of all owners been consolidated by communitization, unitization, force-pooling, etc?

☐ Yes ☐ No If answer is "yes," type of consolidation _____

If answer is "no," list the owners and tract descriptions which have actually been consolidated. (Use reverse side of this form if necessary.) _____

No allowable will be assigned to the well until all interests have been consolidated (by communitization, unitization, forced-pooling, or otherwise) or until a non-standard unit, eliminating such interests, has been approved by the Division.

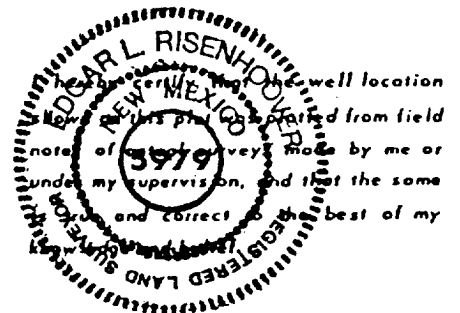
SECTION 3	
Dugan Prod. NM 23744 810'  810'	

CERTIFICATION

I hereby certify that the information contained herein is true and complete to the best of my knowledge and belief.

Sherman E. Dugan
Name
Sherman E. Dugan
Position
Geologist
Company
Dugan Production Corp.

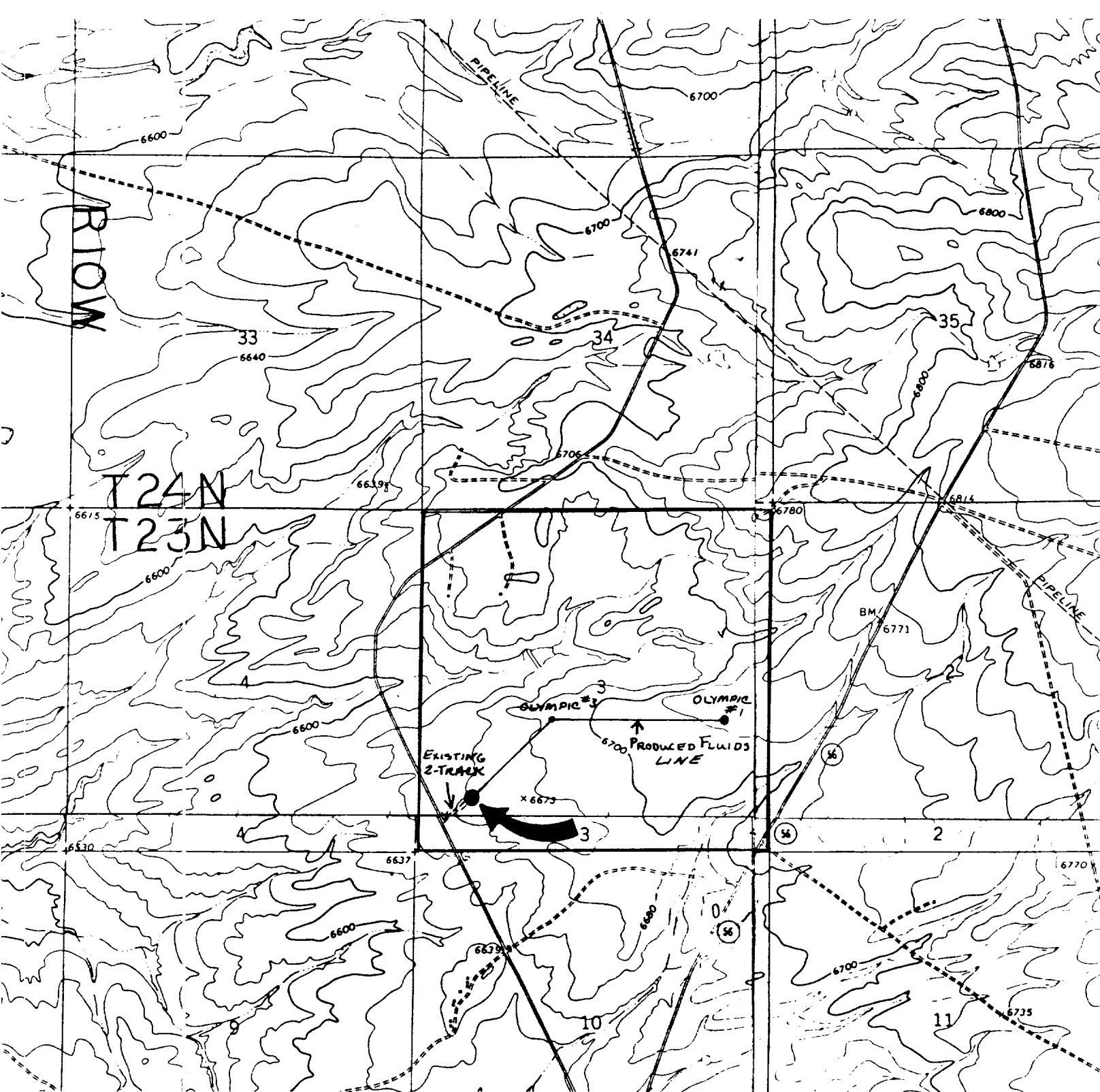
Date
9-29-87



Date Surveyed
September 16, 1987

Registered Professional Engineer
and/or Land Surveyor

Edgar L. Risenhoff
Certificate No. 5979



DUCAN PRODUCTION CORP. - Olympic #4
Existing Roads Exhibit E

Vicinity of nearest town or reference pt.
8 miles SW of Blanco Trading Post

Type of surface dirt

Conditions good

Other

Reference map: USGS map: Huerfano Trading
Post SW, 1966 and Pueblo Bonito NW, 1966

(7.5 min ser es)

DUCAN PRODUCTION CORP. - Olympic #4
Planned Access Road(s) Exhibit E

Width 20' Maximum grades 1%

Drainage design as required

Cuts & Fills see Cut & Fill Diagram

Surfacing material none

Turnouts

Culverts

Gates

Cattleguards

Fence cuts

Access road(s) do/do not cross Fed/Ind land.

Proposed Fluids-Gathering Line