

UNITED STATES  
DEPARTMENT OF THE INTERIOR  
GEOLOGICAL SURVEY

LEASE DESIGNATION AND SERIAL NO.

NM-42059

INDIAN ALLOTTEE OR TRIBE NAME

## APPLICATION FOR PERMIT TO DRILL, DEEPEN, OR PLUG BACK

1a. TYPE OF WORK

DRILL ☒DEEPEN ☐PLUG BACK ☐

b. TYPE OF WELL

OIL  
WELL ☒GAS  
WELL ☐OTHER ☐SINGLE  
ZONE ☒MULTIPLE  
ZONE ☐

2. NAME OF OPERATOR

DUGAN PRODUCTION CORP.

3. ADDRESS OF OPERATOR

P.O. Box 5820, Farmington, NM 87499-5820

4. LOCATION OF WELL (Report location clearly and in accordance with any State requirements.)

At surface

990' FSL &amp; 1980' FEL

At proposed prod. zone

7. UNIT AGREEMENT NAME

8. FARM OR LEASE NAME

Champ

9. WELL NO.

6

10. FIELD AND POOL, OR WILDCAT

South Bisti Gallup EXT

11. SEC., T., R. M., OR BLK.  
AND SURVEY OR AREA

Sec. 5, T 23N, R 10W, NMPM

12. COUNTY OR PARISH

San Juan

13. STATE

NM

14. DISTANCE IN MILES AND DIRECTION FROM NEAREST TOWN OR POST OFFICE\*

approx. 9 1/2 miles SW of Blanco Trading Post, NM

15. DISTANCE FROM PROPOSED\*

LOCATION TO NEAREST  
PROPERTY OR LEASE LINE, FT.

990'

(Also to nearest drlg. unit line, if any)

18. DISTANCE FROM PROPOSED LOCATION\*  
TO NEAREST WELL, DRILLING, COMPLETED,  
OR APPLIED FOR, ON THIS LEASE, FT.

1655' from

Champ #5

16. NO. OF ACRES IN LEASE

2118.04

19. PROPOSED DEPTH

4590'

17. NO. OF ACRES ASSIGNED  
TO THIS WELL

80

20. ROTARY OR CABLE TOOLS

Rotary

22. APPROX. DATE WORK WILL START\*

ASAP

21. ELEVATIONS (Show whether DF, RT, CR, etc.)  
6510' GL; 6522' KBThis action is subject to technical and  
procedural review pursuant to 43 CFR 3105.3  
and appeal provisions of 43 CFR 3105.4.23. ~~and appeal provisions of 43 CFR 3105.4~~ MINING PROGRAMAPPROVED FOR THE BUREAU OF LAND MANAGEMENT  
SUPPORT TO THE BUREAU OF LAND MANAGEMENT WITH ATTACHED

SIZE OF HOLE	SIZE OF CASING	WEIGHT PER FOOT	SETTING DEPTH	QUANTITY OF CEMENT
12-1/4"	8-5/8"	24#	200'	159 cu.ft. circ. to surface
7-7/8"	4-1/2"	10.5#	4590'	1469 cu.ft. circ. to surface

Plan to drill a 12-1/4" hole and set 200' of 8-5/8" OD, 24#, J-55 surface casing; then plan to drill a 7-7/8" hole to total depth with gel-water-mud program to test Gallup formation. Plan to run IES and CDL logs. If determined productive, will run 4 1/2", 10.5#, J-55 casing, selectively perforate, frac, clean out after frac and complete well.

IN ABOVE SPACE DESCRIBE PROPOSED PROGRAM: If proposal is to deepen or plug back, give data on present productive zone and proposed new productive zone. If proposal is to drill or deepen directionally, give pertinent data on subsurface locations and measured and true vertical depths. Give blowout preventer program, if any.

24.

SIGNED

Jim L. Jacobs

TITLE

Geologist

DATE

10-19-88

PERMIT NO.

APPROVAL DATE

APPROVED BY

TITLE

DATE

CONDITIONS OF APPROVAL, IF ANY:

## OIL CONSERVATION DIVISION

STATE OF NEW MEXICO  
ENERGY AND MINERALS DEPARTMENTP. O. BOX 2088  
SANTA FE, NEW MEXICO 87501Form C-102  
Revised 10-1-78

All distances must be from the outer boundaries of the Section.

Operator Dugan Production Corporation		Lease Champ		Well No. 6
Unit Letter 0	Section 5	Township 23 North	Range 10 West	County San Juan
Actual Footage Location of Well:				
990	feet from the	South	line and	1980
feet from the	East		line	
Ground Level Elev. 6510'	Producing Formation Gallup	Pool South Bisti Gallup <i>EAT</i>	Dedicated Acreage: 80 Acres	

1. Outline the acreage dedicated to the subject well by colored pencil or hatchure marks on the plat below.
2. If more than one lease is dedicated to the well, outline each and identify the ownership thereof (both as to working interest and royalty).
3. If more than one lease of different ownership is dedicated to the well, have the interests of all owners been consolidated by communitization, unitization, force-pooling, etc?

☐ Yes ☐ No If answer is "yes," type of consolidation \_\_\_\_\_

If answer is "no," list the owners and tract descriptions which have actually been consolidated. (Use reverse side of this form if necessary.) \_\_\_\_\_

No allowable will be assigned to the well until all interests have been consolidated (by communitization, unitization, forced-pooling, or otherwise) or until a non-standard unit, eliminating such interests, has been approved by the Division.

SECTION 5		DIST. 2	
Dugan Prod. Fed. Ls. #NM-42059		1980'	
990'			

## CERTIFICATION

I hereby certify that the information contained herein is true and complete to the best of my knowledge and belief.

Name  
Jim L. Jacobs

Position  
Geologist

Company  
Dugan Production Corp.

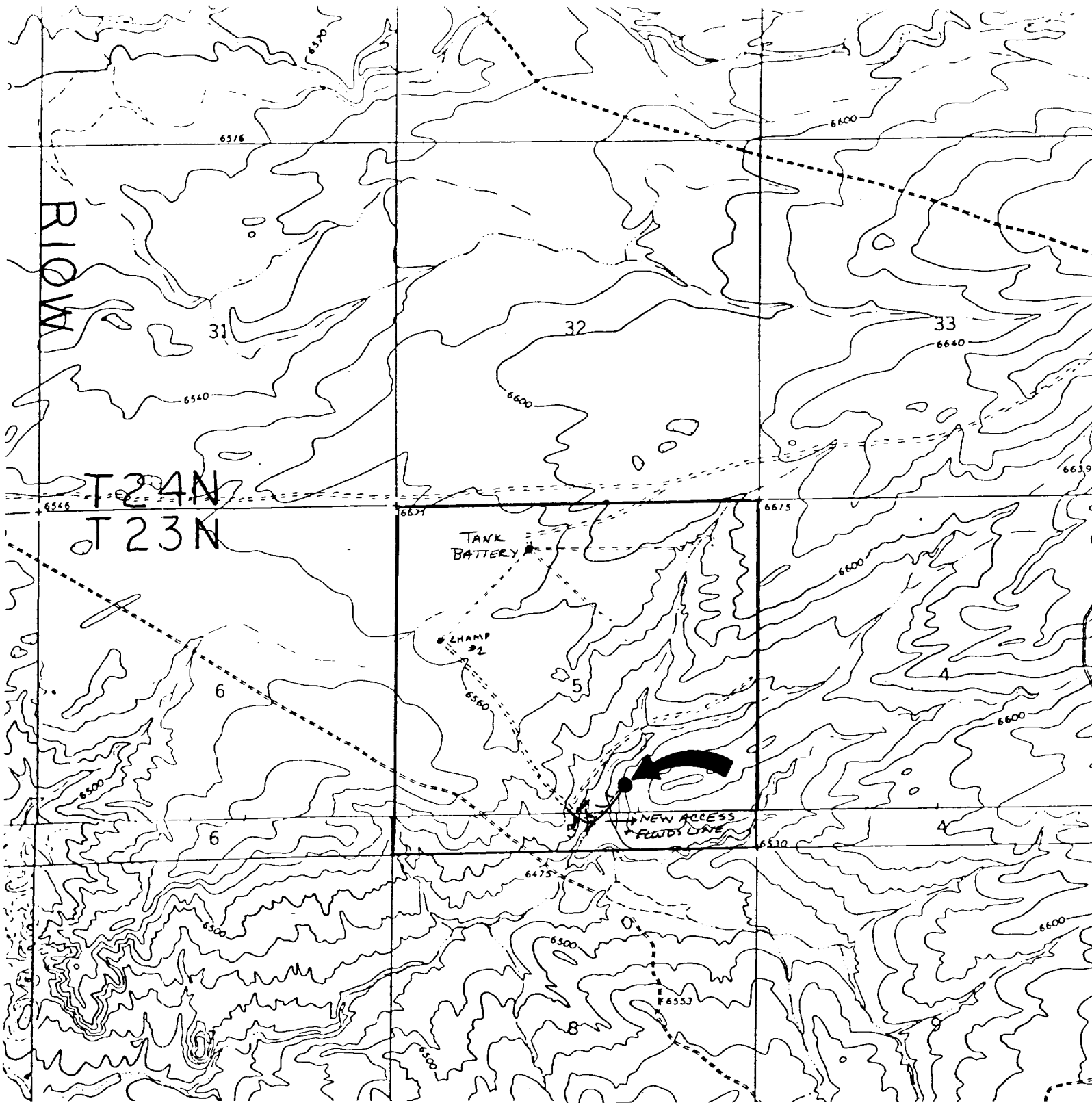
Date  
10-19-88

I hereby certify that the well location shown on this plat was obtained from field notes of actual surveys made by me or under my supervision, and that the same is true and correct to the best of my knowledge and belief.

Date Surveyed  
October 6, 1988

Registered Professional Engineer  
and/or Land Surveyor

*Edgar L. Risenhoover*  
Certificate No. 5979



DUGAN PRODUCTION CORP. - Champ #6

DUGAN PRODUCTION CORP. - Champ #6

Existing Roads

Exhibit E

Vicinity of nearest town or reference pt.  
approx. 9½ miles SW of Blanco Trading Post

Type of surface dirt

Conditions good

Other \_\_\_\_\_

Reference map: USGS map: Huerfano Trading Post SW 1966; Pueblo Bonito NW 1966

Planned Access Road(s)

Exhibit E

Width 20' Maximum grades 6%

Drainage design as required

Cuts & Fills see Cut & Fill Diagram

Surfacing material none required

↪ Turnouts

▬ Culverts

⊠ Gates

▬ Cattleguards

↗ Fence cuts

↘ Waterbars

----- New Access &  
Fluids line to  
Existing System

Access road(s) do not cross Fed/Ind Land