

UNITED STATES
DEPARTMENT OF THE INTERIOR
GEOLOGICAL SURVEY

APPLICATION FOR PERMIT TO DRILL, DEEPEN, OR PLUG BACK

1a. TYPE OF WORK

DRILL ☒DEEPEN ☐PLUG BACK ☐

b. TYPE OF WELL

OIL
WELL ☒GAS
WELL ☐

OTHER

SINGLE
ZONE ☒MULTIPLE
ZONE ☐

2. NAME OF OPERATOR

DUGAN PRODUCTION CORP.

3. ADDRESS OF OPERATOR

P.O. Box 420, Farmington, NM 87499

4. LOCATION OF WELL (Report location clearly and in accordance with any State requirements.)
At surface1980' FNL & 660' FWL
At proposed prod. zone

14. DISTANCE IN MILES AND DIRECTION FROM NEAREST TOWN OR POST OFFICE*

approx. 9 1/4 miles SW of Blanco Trading Post

15. DISTANCE FROM PROPOSED*

LOCATION TO NEAREST
PROPERTY OR LEASE LINE, FT.
(Also to nearest drlg. unit line, if any)

660'

16. NO. OF ACRES IN LEASE

640

18. DISTANCE FROM PROPOSED LOCATION*

TO NEAREST WELL, DRILLING, COMPLETED,
OR APPLIED FOR, ON THIS LEASE, FT.1867' from pro-
posed DPC
Calgary #3

19. PROPOSED DEPTH

4650'

21. ELEVATIONS (Show whether DF, RT, GR, etc.)

6551' GL

23.

PROPOSED CASING AND CEMENTING PROGRAM

SIZE OF HOLE	SIZE OF CASING	WEIGHT PER FOOT	SETTING DEPTH	QUANTITY OF CEMENT
12-1/4"	8-5/8"	24#	200'	159 cf circ. to surface
7-7/8"	4-1/2"	10.5#	4650'	1467 cf circ. to surface

Plan to drill a 12-1/4" hole and set 200' of 8-5/8" OD, 24#, J-55 surface casing; then plan to drill a 7-7/8" hole to total depth with gel-water-mud program to test Gallup formation. Plan to run IES and CDL logs. If determined productive, will run 4-1/2", 10.5#, J-55 casing, selectively perforate, frac, clean out after frac and complete well.

RECEIVED

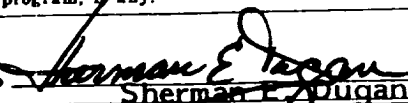
JUN 19 1989

BUREAU OF LAND MANAGEMENT

IN ABOVE SPACE DESCRIBE PROPOSED PROGRAM: If proposal is to deepen or plug back, give data on present productive zone and proposed new productive zone. If proposal is to drill or deepen directionally, give pertinent data on subsurface locations and measured and true vertical depths. Give blowout preventer program, if any.

24.

SIGNED


Sherman E. Dugan

TITLE

Vice President/
Geologist

DATE

6-16-89

(This space for Federal or State official use)

PERMIT NO.

APPROVAL DATE

APPROVED BY

TITLE

CONDITIONS OF APPROVAL, IF ANY:

APPROVED
AS ORDERED

AREA MANAGER

*See Instructions On Reverse Side

11000

Submit to Appropriate
District Office
State Lease - 4 copies
Fee Lease - 3 copies

State of New Mexico
Energy, Minerals and Natural Resources Department

Form C-102
Revised 1-1-89

OIL CONSERVATION DIVISION

P.O. Box 2088
Santa Fe, New Mexico 87504-2088

DISTRICT I
P.O. Box 1980, Hobbs, NM 88240

DISTRICT II
P.O. Drawer DD, Artesia, NM 88210

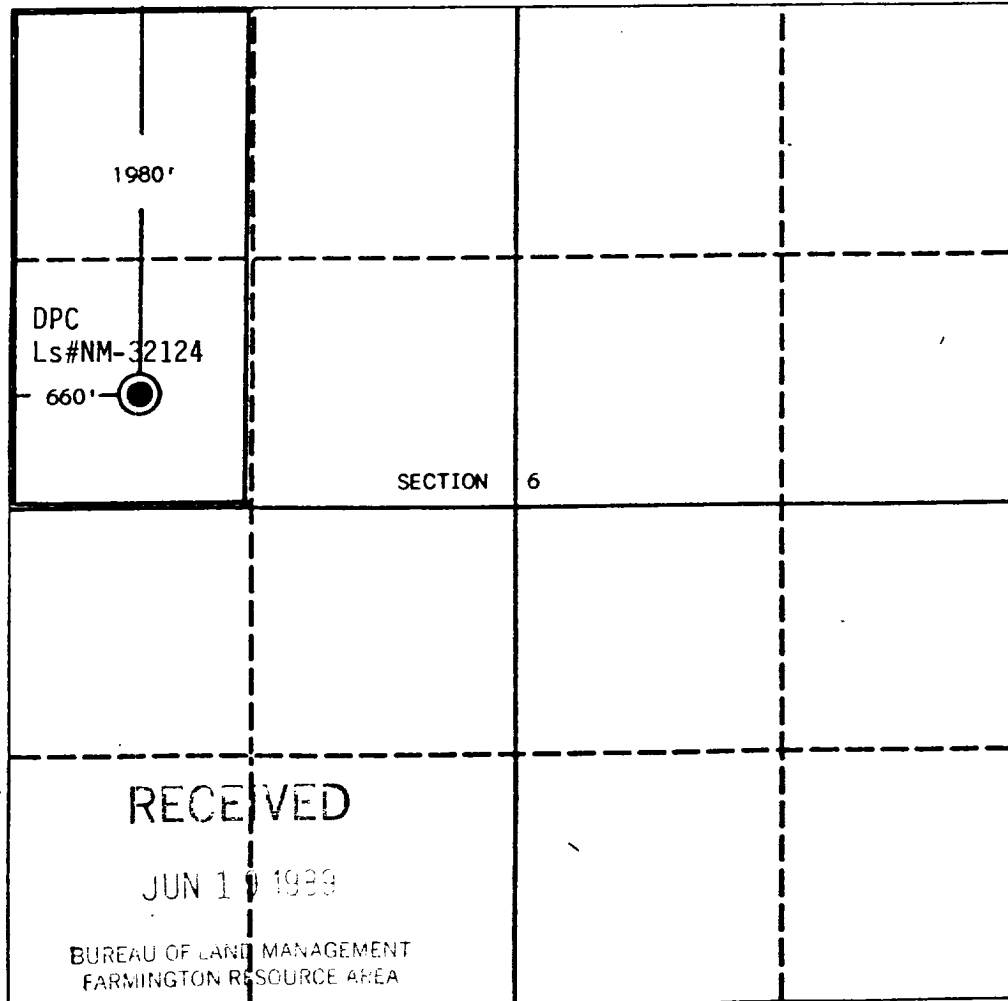
DISTRICT III
1000 Rio Brazos Rd., Aztec, NM 87410

WELL LOCATION AND ACREAGE DEDICATION PLAT

All Distances must be from the outer boundaries of the section

Operator Dugan Production Corporation			Lease Calgary		Well No. 4
Unit Letter E	Section 6	Township 23 North	Range 10 West	County San Juan	
Actual Footage Location of Well: 1980 feet from the North line and 660 feet from the West line					
Ground level Elev. 6551	Producing Formation Gallup		Pool South Bisti Gallup Ext.		Dedicated Acreage: 283280 Acres

- Outline the acreage dedicated to the subject well by colored pencil or hatchure marks on the plat below.
- If more than one lease is dedicated to the well, outline each and identify the ownership thereof (both as to working interest and royalty).
- If more than one lease of different ownership is dedicated to the well, have the interest of all owners been consolidated by communitization, unitization, force-pooling, etc.?
☐ Yes ☐ No If answer is "yes" type of consolidation _____
If answer is "no" list the owners and tract descriptions which have actually been consolidated. (Use reverse side of this form if necessary.) _____
No allowable will be assigned to the well until all interests have been consolidated (by communitization, unitization, forced-pooling, or otherwise) or until a non-standard unit, eliminating such interest, has been approved by the Division.



OPERATOR CERTIFICATION

I hereby certify that the information contained herein is true and complete to the best of my knowledge and belief.

Signature

Printed Name

Sherman E. Dugan

Position

Vice-President

Company

Dugan Production Corp.

Date

6-16-89

SURVEYOR CERTIFICATION

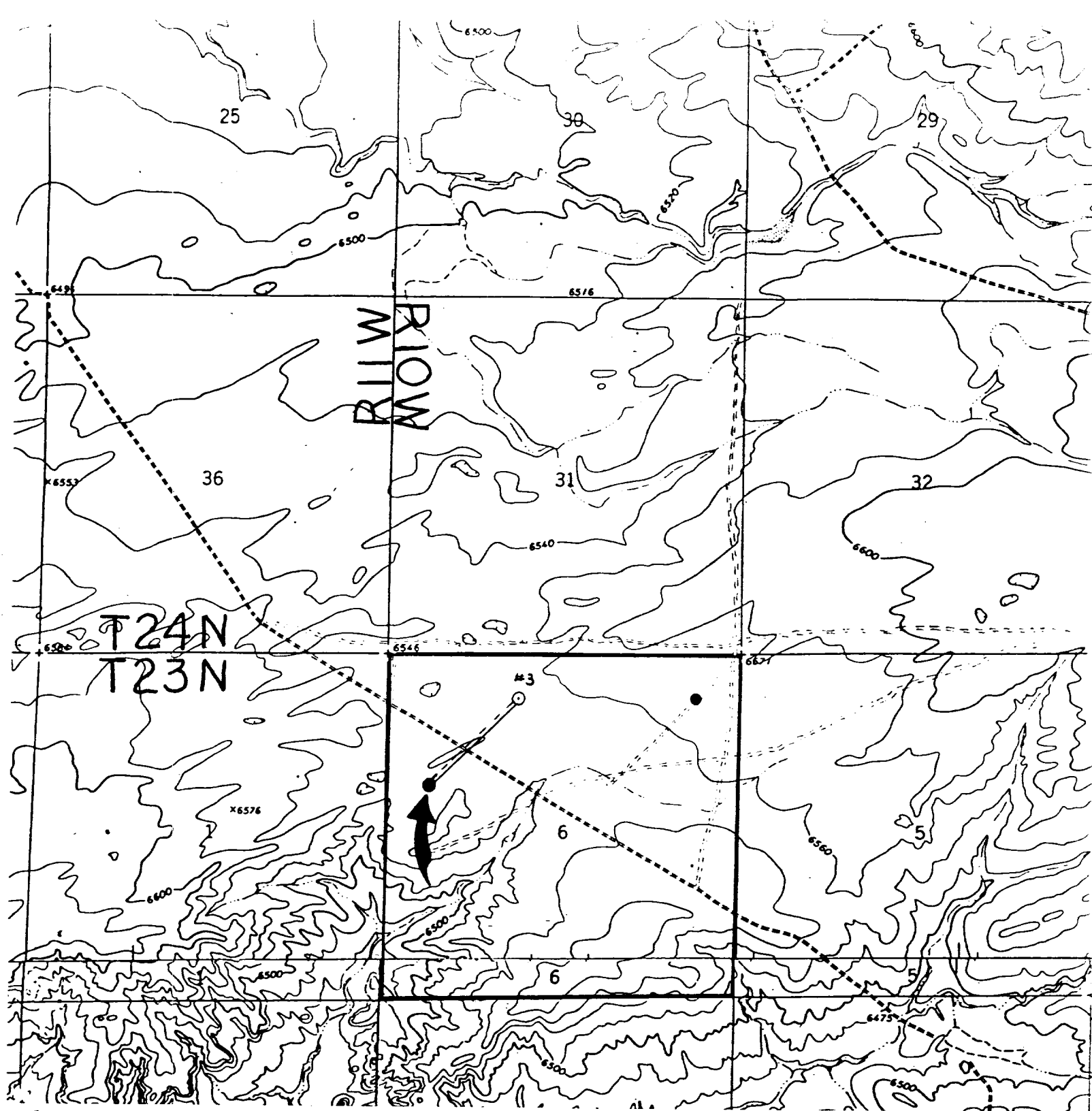
I hereby certify that the well location shown on this plat was plotted from field notes of actual surveys made by me or under my supervision, and that the same is true and correct to the best of my knowledge and belief.

Date Surveyed

March 6, 1989

Signature & Seal of
Professional Surveyor

EDGAR L. RISENHOOVER
NEW MEXICO
5979
Edgar L. Risenhoover



DUGAN PRODUCTION CORP. - Calgary #4

Existing Roads

Exhibit E

Vicinity of nearest town or reference pt.
approx. 9½ miles SW of Blanco Trading Post

Type of surface dirt

Conditions good

Other _____

Reference map: USGS map: Huerfano Trading
Post SW 1966; Pueblo Bonito NW 1966

Planned Access Road(s)

Exhibit E

Width 20' Maximum grades 2%

Drainage design as required

Cuts & Fills see Cut & Fill Diagram

Surfacing material none required

Turnouts

Culverts

Gates

Cattleguards

Fence cuts

Waterbars

new access and
fluids line to
existing system

Access road(s) do do not cross Fed Ind land.